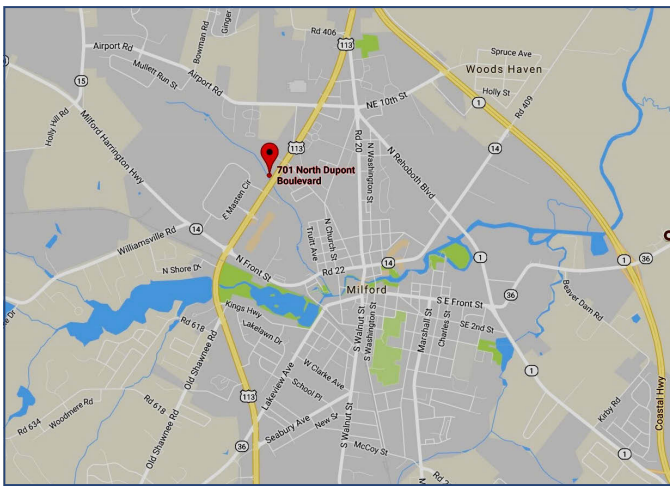


Retail/Office for Lease



701 N Dupont Blvd

Milford, DE



Property Information

- ⇒ UNDER CONSTRUCTION: HALPERN PLAZA II
- ⇒ 3,500 - 10,500 SF Professional Office & Retail Space
- ⇒ Will Divide
- ⇒ Lease Price: \$25.00psf NNN

Demographics	1 Mile	3 Miles	5 Miles
Population	5,440	17,064	25,671
Avg. Household Income	\$65,228	\$70,279	\$72,412

For more information contact:

Charlie Rodriguez

302-674-3400

ccrod1@aol.com

All information contained herein is believed to be accurate, however was obtained from third parties and R & R Commercial Realty, Inc. does not warrant as to the accuracy submitted, subject to changes or modification without notice. Listing Broker represents the sellers interest.

R&R Commercial Realty

46 South State Street
Dover, Delaware 19901

www.RandRCommercialRealty.com

302-674-3400 (Office)

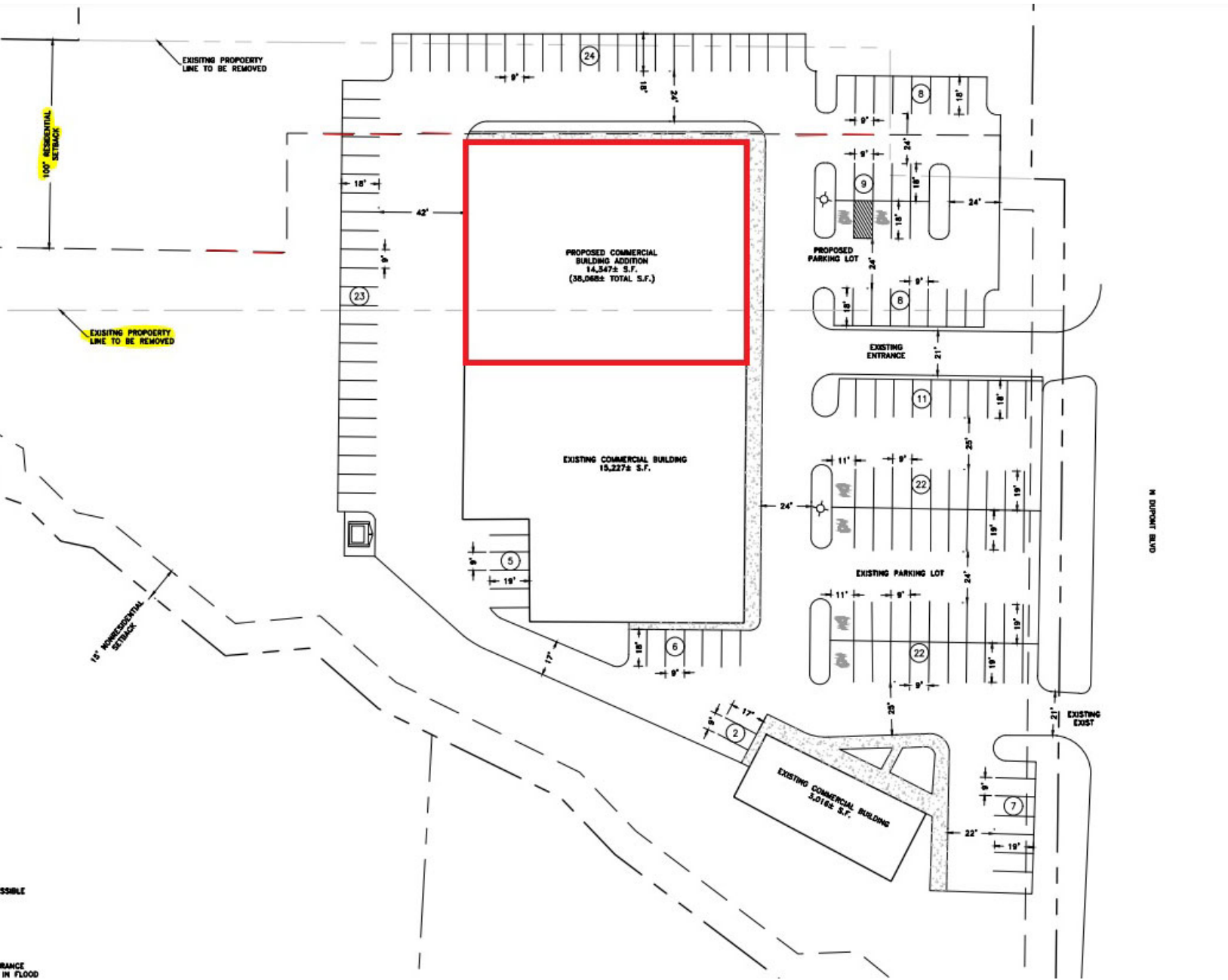
302-674-8479 (Fax)

Retail/Office for Lease



701 N Dupont Blvd

Milford, DE



For more information contact:

Charlie Rodriguez

302-674-3400

ccrod1@aol.com

All information contained herein is believed to be accurate, however was obtained from third parties and R & R Commercial Realty, Inc. does not warrant as to the accuracy submitted, subject to changes or modification without notice. Listing Broker represents the sellers interest.

R&R Commercial Realty

46 South State Street
Dover, Delaware 19901

www.RandRCommercialRealty.com

302-674-3400 (Office)

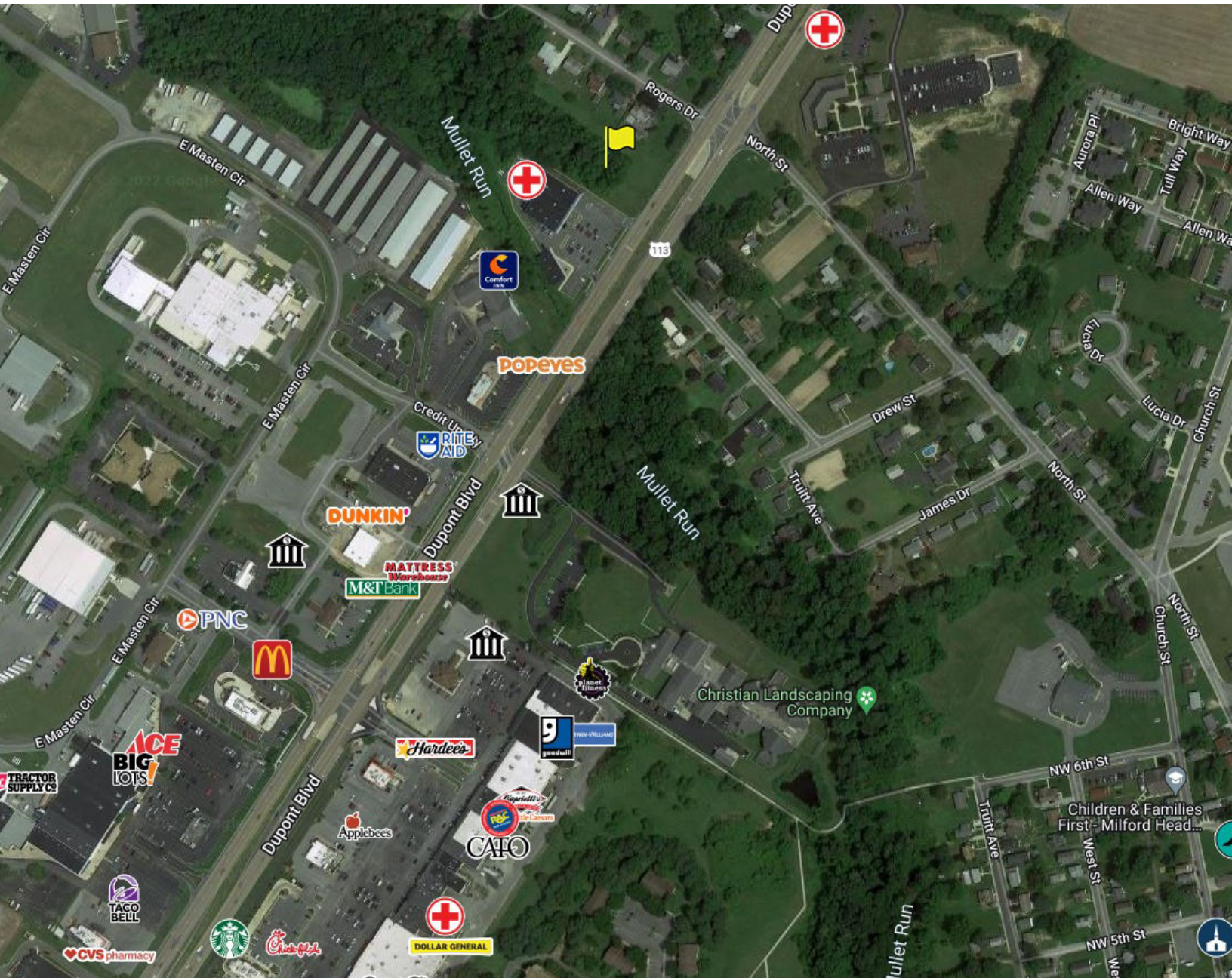
302-674-8479 (Fax)

Retail/Office for Lease



701 N Dupont Blvd

Milford, DE



For more information contact:

Charlie Rodriguez

302-674-3400

ccrod1@aol.com

All information contained herein is believed to be accurate, however was obtained from third parties and R & R Commercial Realty, Inc. does not warrant as to the accuracy submitted, subject to changes or modification without notice. Listing Broker represents the sellers interest.

R&R Commercial Realty

46 South State Street
Dover, Delaware 19901

www.RandRCommercialRealty.com

302-674-3400 (Office)

302-674-8479 (Fax)