

Office Space for Lease

±8,400 SF - Full Floor

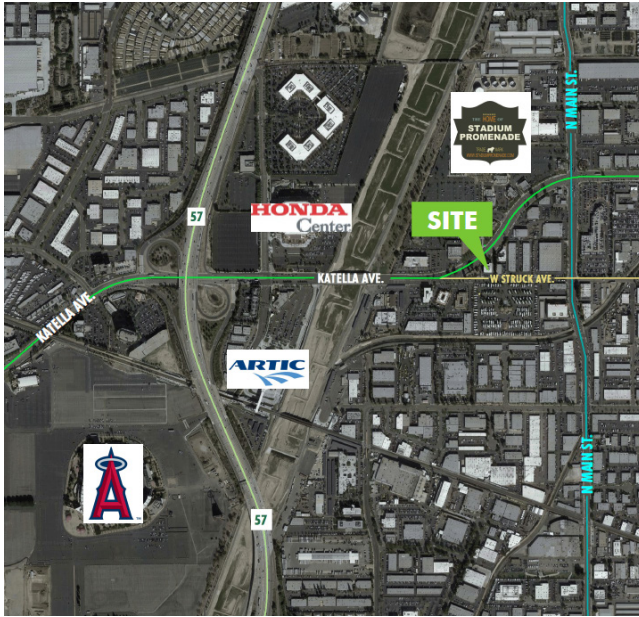
1700 W. Katella Ave, Orange, CA



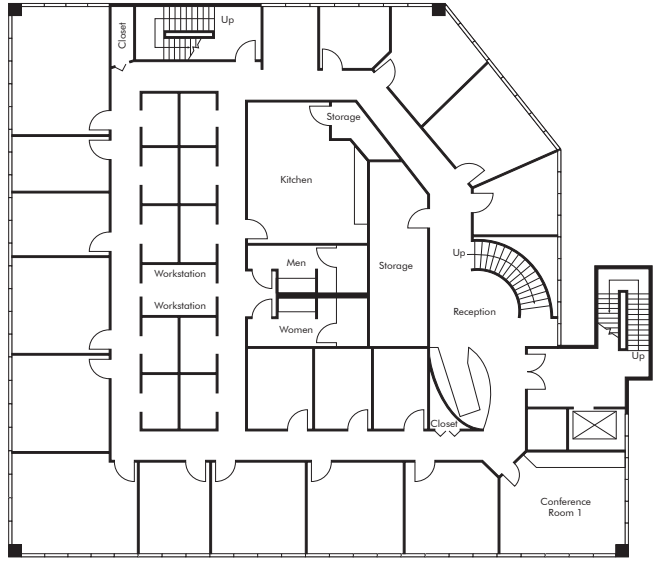
Office Building

1700 W. Katella Ave | Orange, CA

For Lease



Aerial Map



2nd Floor



Floor Plan

Property Features

- + Available August 1, 2024
- + High identify office building
- + 2 Floors above parking
- + ±17,392 SF (±8,400 SF per floor)
- + Elevator Service
- + 4:1000 Free surface and covered parking
- + Immediate access to Orange (57) Freeway, Santa Ana (5) and Garden Grove (22) Freeways
- + Walking distance to Anaheim Stadium, Honda Center, Orange Stadium Promenade and other amenities
- + Available at \$1.85/sf per month, FSG.
- + Call to show

Contact Us

Tom Abel

First Vice President
 +1 714 371 9255 (w)
 +1 714 478 6000 (m)
 tom.abel@cbre.com
 Lic. 00985659

© 2024 CBRE, Inc. All rights reserved. This information has been obtained from sources believed reliable, but has not been verified for accuracy or completeness. You should conduct a careful, independent investigation of the property and verify all information. Any reliance on this information is solely at your own risk. CBRE and the CBRE logo are service marks of CBRE, Inc. All other marks displayed on this document are the property of their respective owners, and the use of such logos does not imply any affiliation with or endorsement of CBRE. Photos herein are the property of their respective owners. Use of these images without the express written consent of the owner is prohibited.