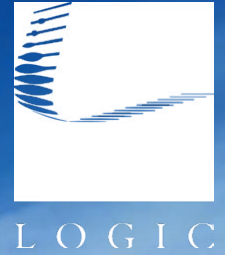


For Lease

# Mill Int'l Building



3100 Mill St.  
Reno, NV 89502

**Michael Keating, SIOR**  
Partner  
775.386.9727  
mkeating@logicCRE.com  
S.0174942

**Michael Dorn**  
Senior Associate  
775.453.4436  
mdorn@logicCRE.com  
S.0189635



Listing Snapshot



**\$1.15 PSF**  
Lease Rate



**± 442 SF**  
Available Square Footage



**IC**  
Zoning

Property Highlights

- Common area renovation just completed
- Multiple digital monument directories
- Ample parking available in both the front and back of the building
- Full-service lease includes all utilities and services excluding communications and janitorial service
- Convenient location allows for easy access to I-580
- Multiple sizes and configurations available
- Renovated suites available for immediate move in
- ± 100 SF address suites available (\$250 per month)
- Common conference room available for Tenant use
- Storage units available

Demographics

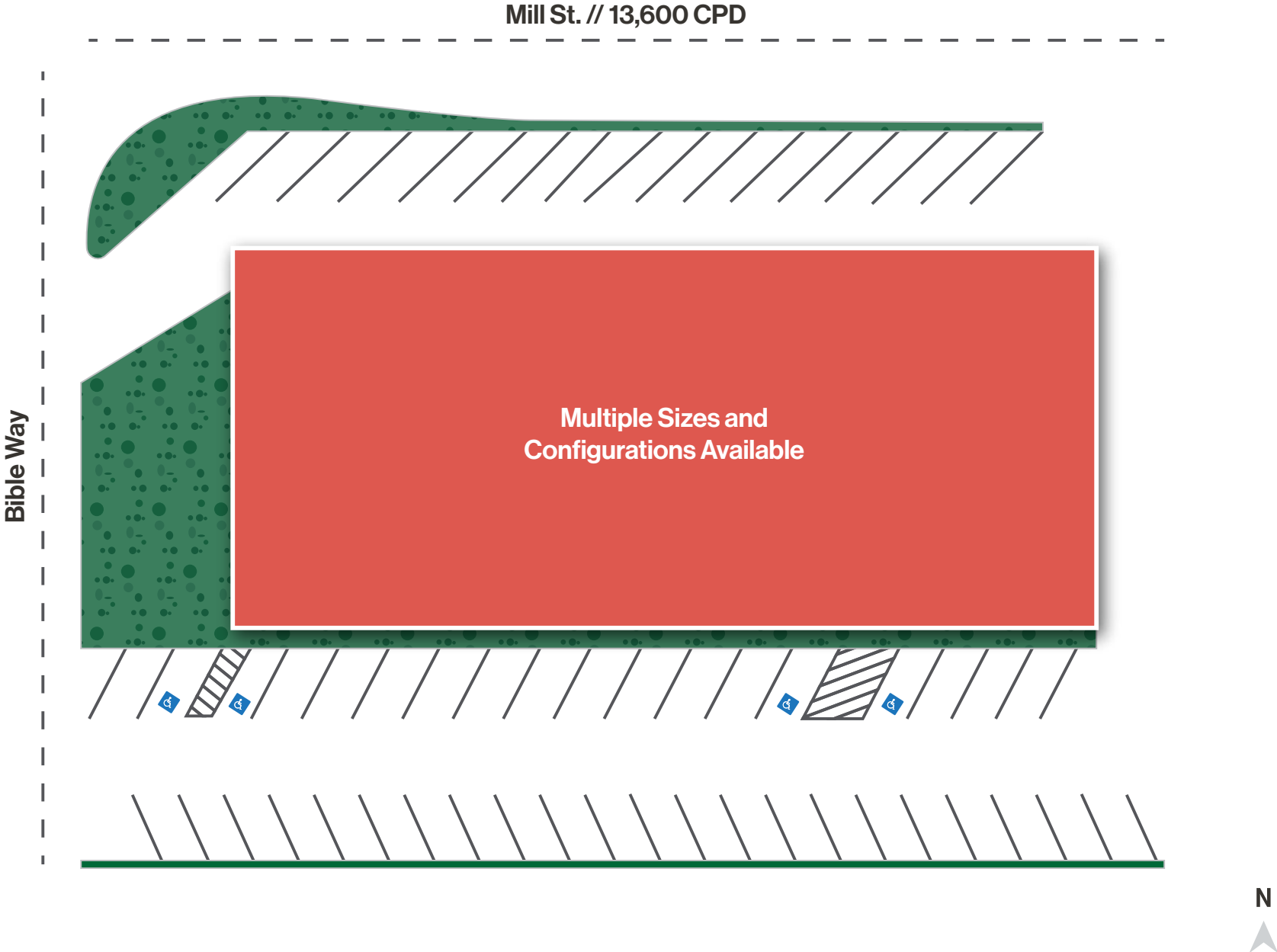
	1-mile	3-mile	5-mile
2025 Population	3,659	133,167	249,434
2025 Average Household Income	\$83,203	\$79,979	\$97,964
2025 Total Households	1,400	57,062	105,143











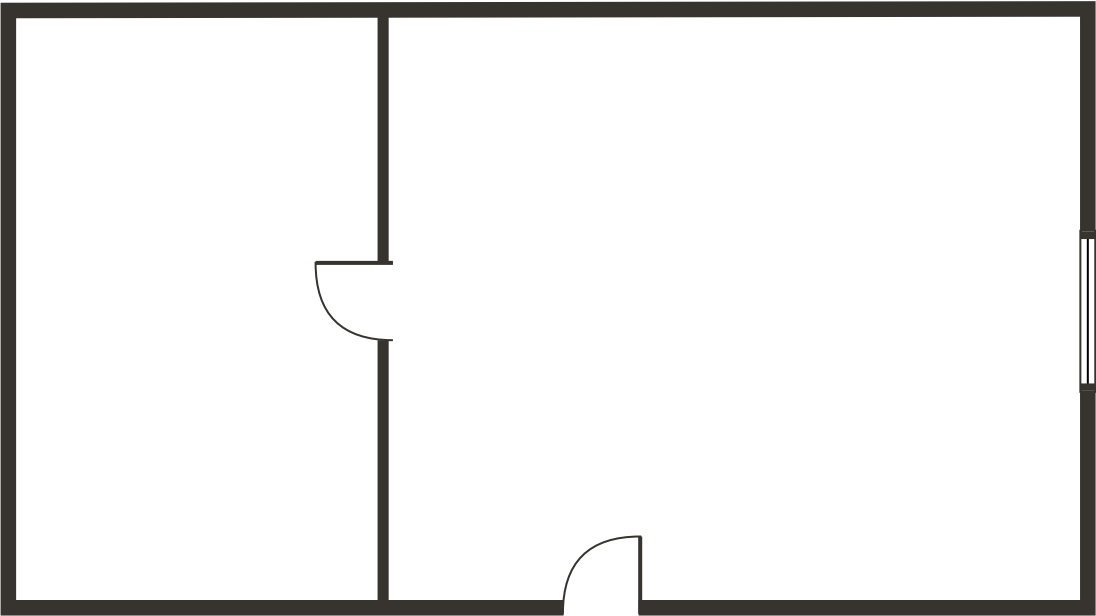
Floor Plan | Suite 216



**\$1.15 PSF**  
Lease Rate



**± 442 SF**  
Available Square Footage



Property Photos



# LOGIC Commercial Real Estate

## Specializing in Brokerage and Receivership Services



Join our email list and  
connect with us on LinkedIn

The information herein was obtained from sources deemed reliable; however LOGIC Commercial Real Estate makes no guarantees, warranties or representation as to the completeness or accuracy thereof.

For inquiries please reach out to our team.

**Michael Keating, SIOR**

Partner  
775.386.9727  
mkeating@logicCRE.com  
S.0174942

**Michael Dorn**

Senior Associate  
775.453.4436  
mdorn@logicCRE.com  
S.0189635