

MEDICAL OFFICE SUITE
2121 Ridge Avenue
Aurora, Illinois



Christine Simek
+1 630.473.5070

christine@xroadsadvisors.com

Introduction



Located in the Western East/West Corridor in Kane County, Illinois. This one story building is conveniently located near Rte 30 & 34 in Aurora. **"MOVE IN READY"** Medical Office Suite in pristine condition, recently renovated with waiting room, receptionists' area with built in marble top desk, 1 private office, four exam rooms with water, 1 ADA washroom, 1 kitchen with rear exit to parking lot. **This is a must see!**

Building Features



Available Suite:

- Suite 105 - 1,238 SF

Property Features:

- 24 Hour Access
- Monument signage
- ADA Accessible
- Ample parking close to front entrance
- Across from Rush Copley Medical Center located just off Ogden Avenue.

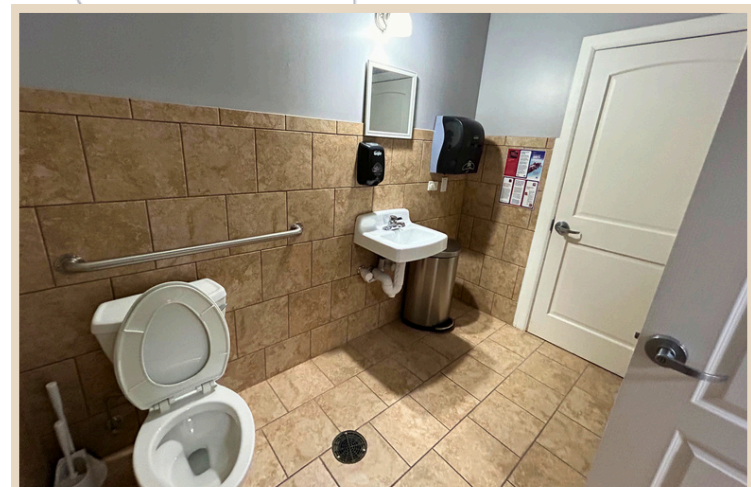
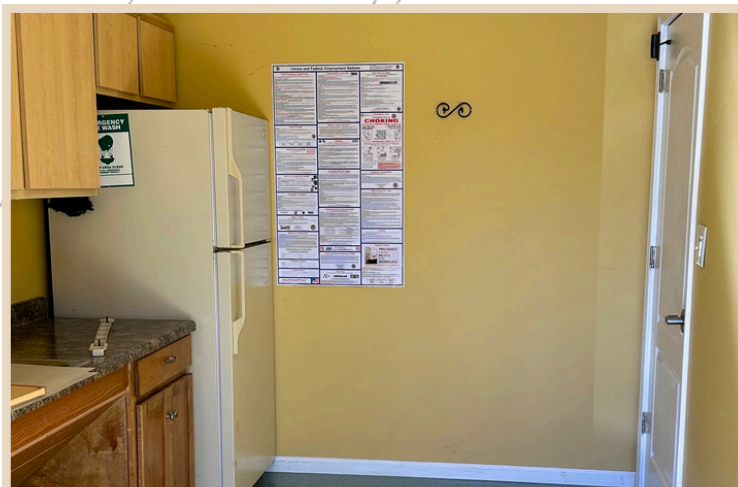
Exterior Photos



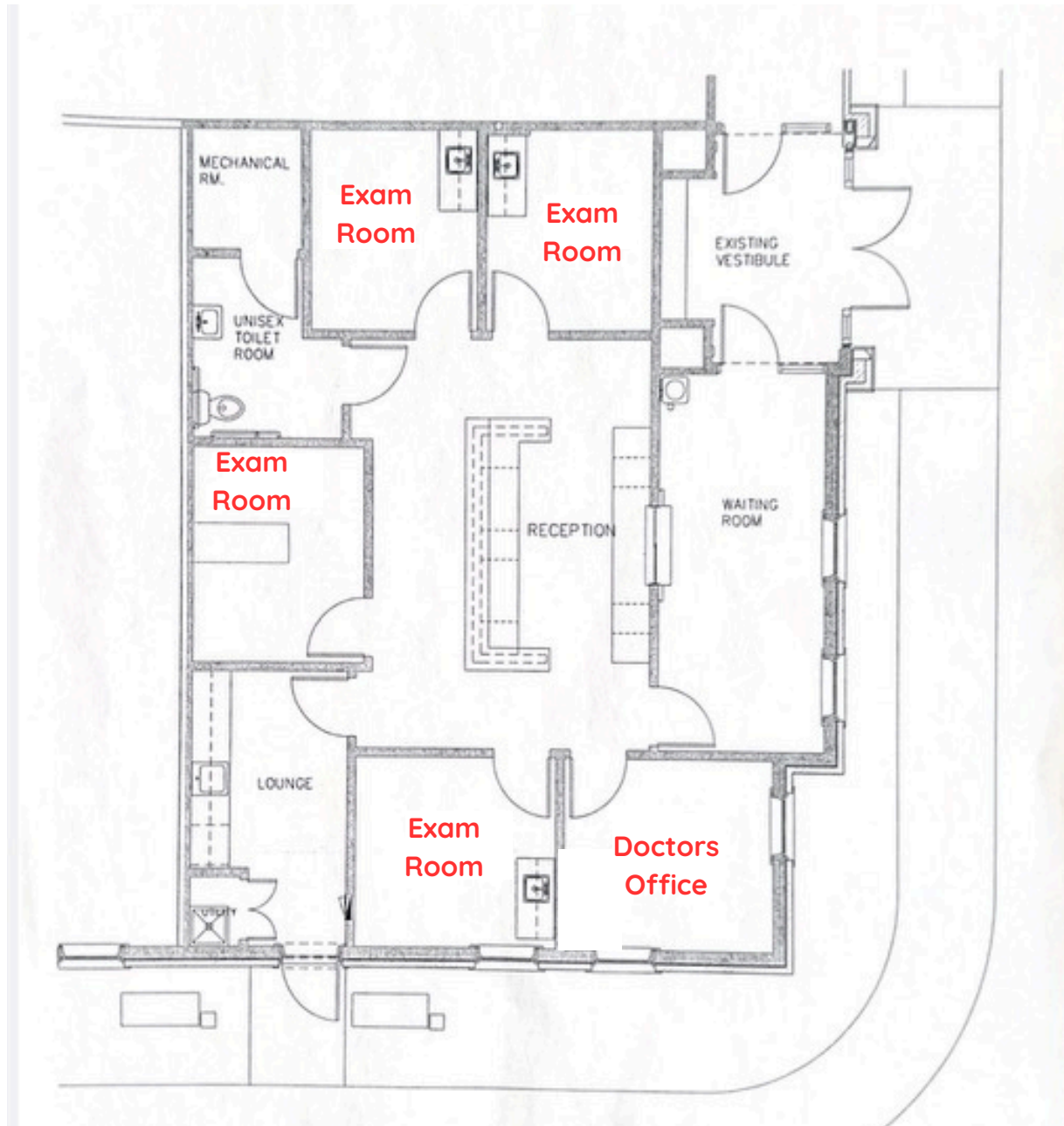
Interior Photos



Interior Photos



Floor Plan



Location



Located across from
Rush Copley
Medical Center



2121 Ridge Ave Aurora, Illinois



Christine Simek
+1 630.473.5070

christine@xroadsadvisors.com