

PARKWOOD BUILDING

4530 Park Rd | Charlotte, NC

New Spec Suite Available!

2nd Floor: 1,896 - 7,713 RSF

3rd Floor: 6,826 RSF

4th Floor: 2,329 RSF

- 4-story professional office building
- Served by two elevators, updated in 2020
- On-site property management & maintenance

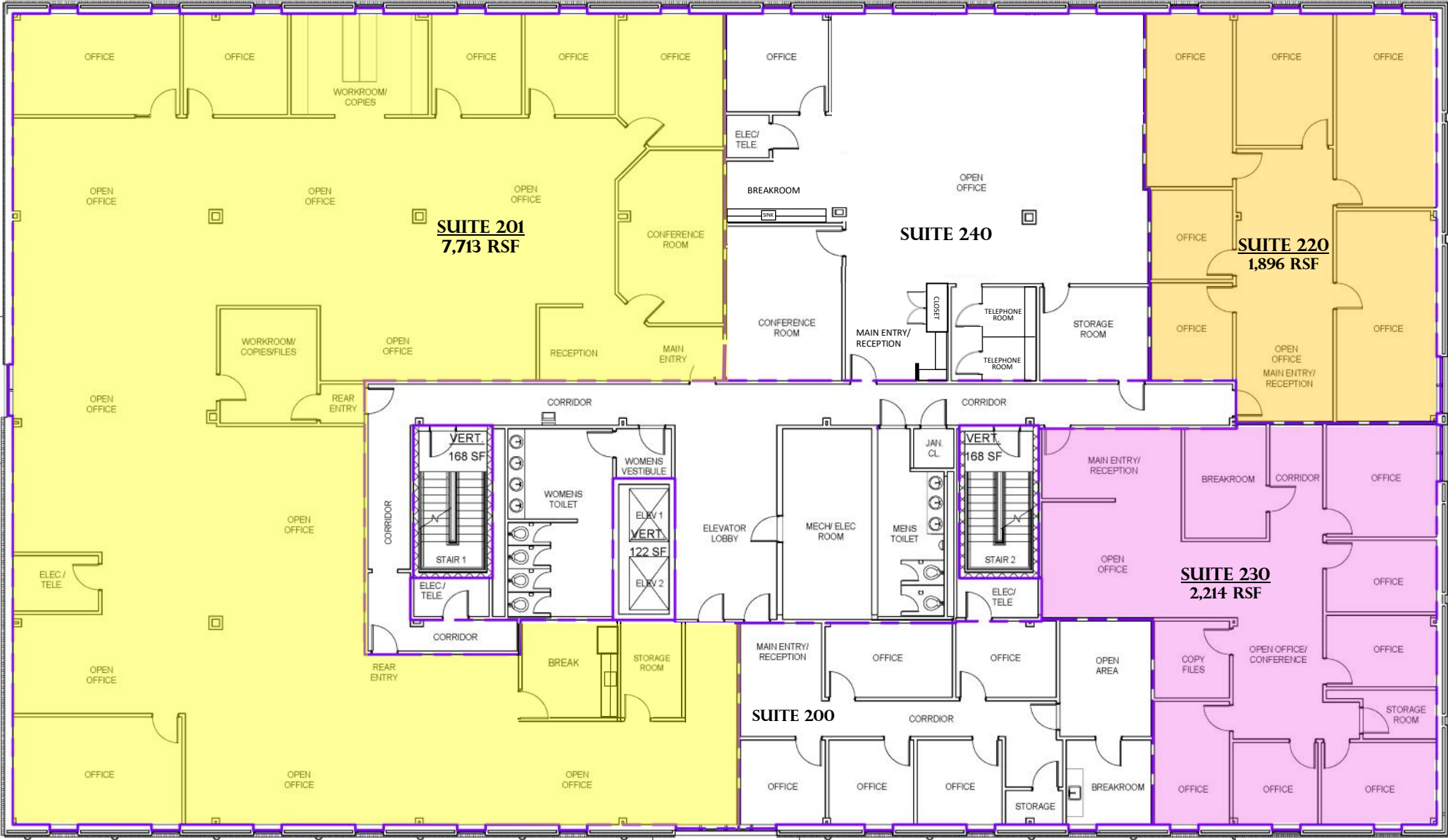
Location:

- Situated on Park Road between Uptown, South Park, CLT airport & major highways
- Walk to numerous restaurants and shops along Montford and Park Road Shopping Center
- Easy access to Park Road via signalized intersection



PARKWOOD 2ND FLOOR

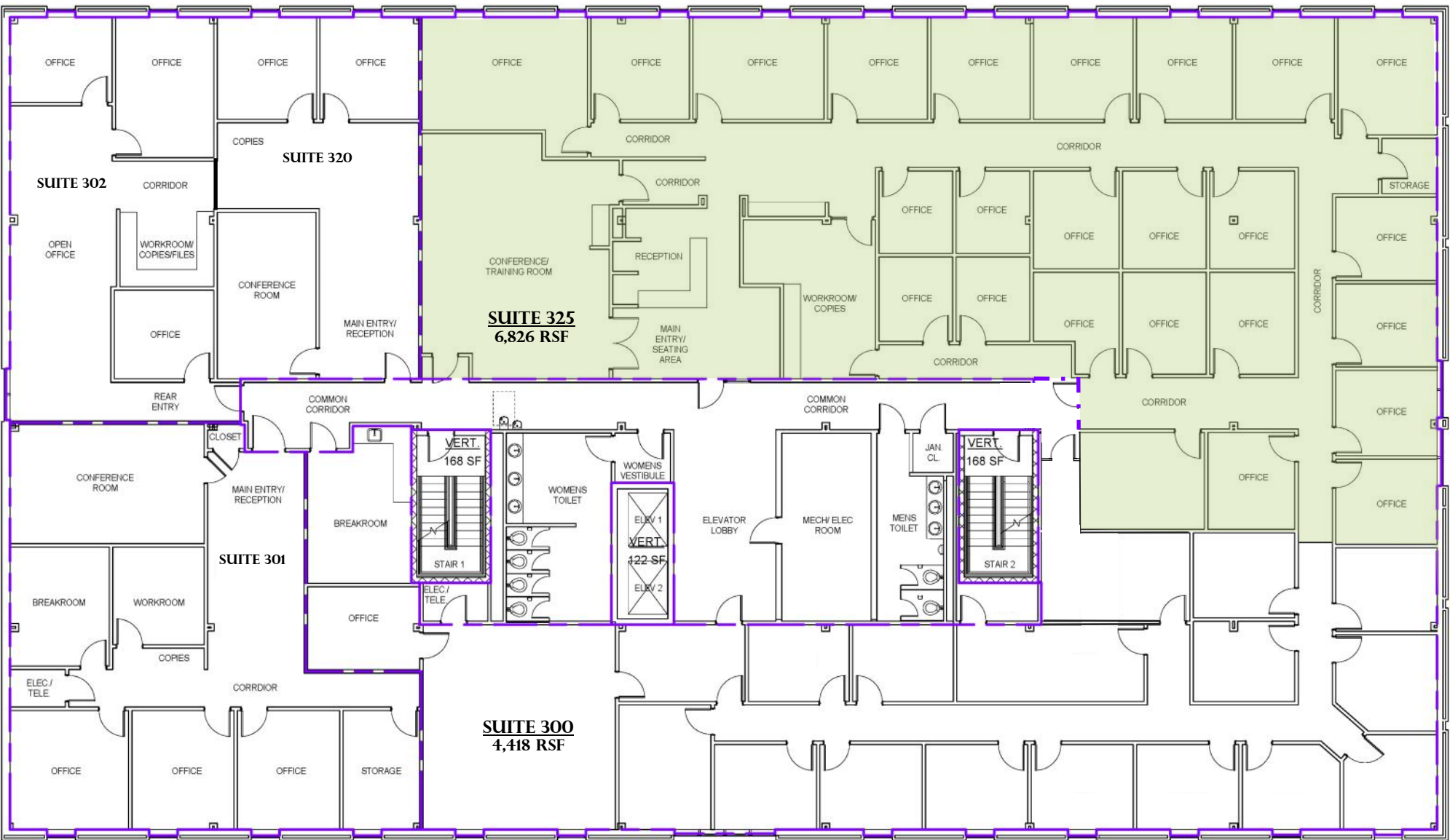
1,896 - 7,713 RSF AVAILABLE



Park Road Side

Abbey Place Side

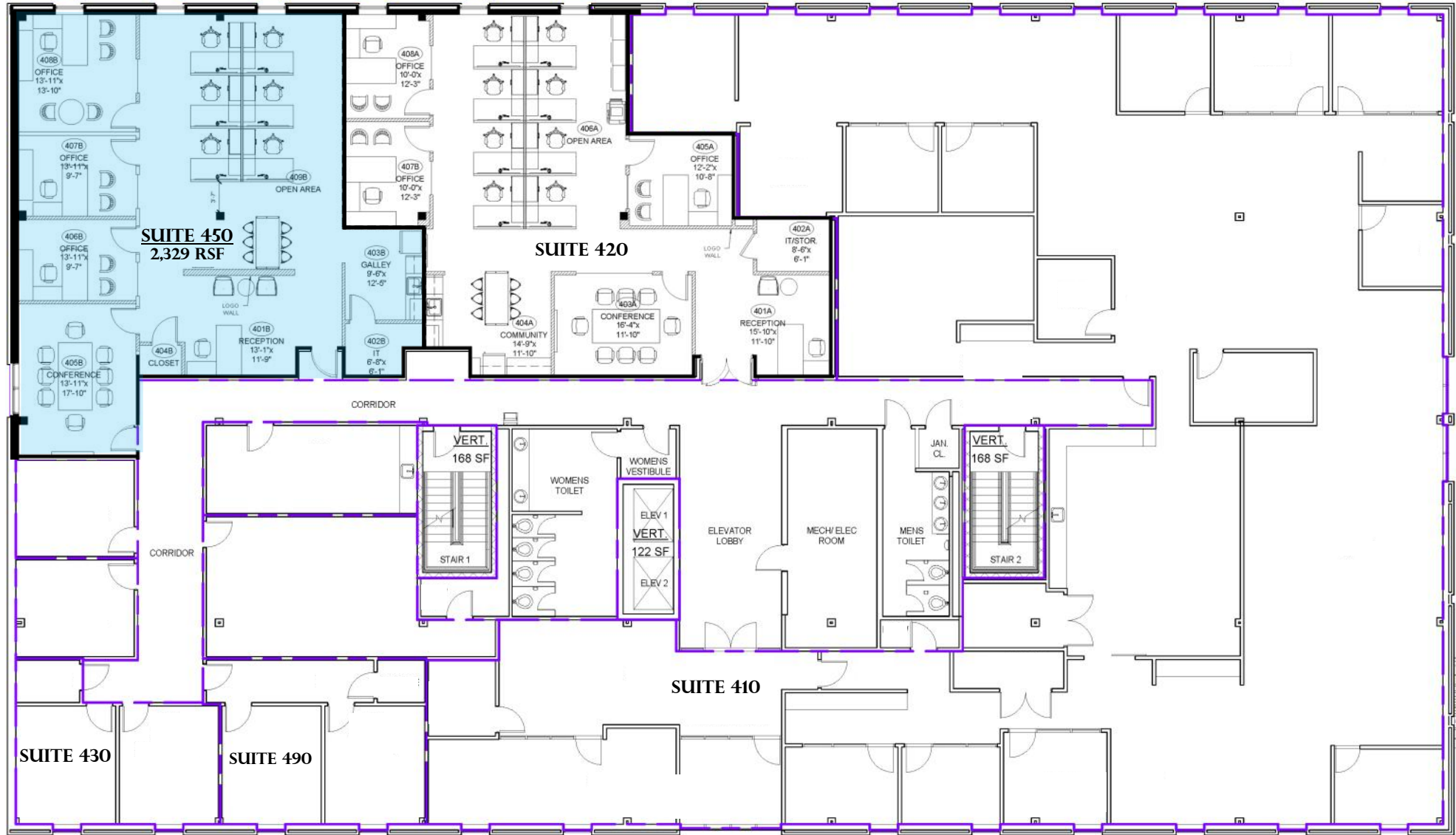




Park Road Side

Abbey Place Side





Abbey Place Side

Park Road Side





Aerial facing Uptown Charlotte



Fourth Floor Lobby



First Floor Lobby



Suite 450 Spec Upfit



Montford Park is the Charlotte, NC neighborhood located along Park Road from Selwyn Avenue to Reece Road behind Park Road Shopping Center. The neighborhood encompasses one-third of a square mile and has become an employment and retail destination with more than **3,200 employees**, **80 retail businesses**, and more than **50,000 cars** driving through it daily.