



2050 East Higgins Road
Elk Grove Village, IL 60007
Tel: 847-439-4400
Fax: 847-439-1465

2400 – 2432

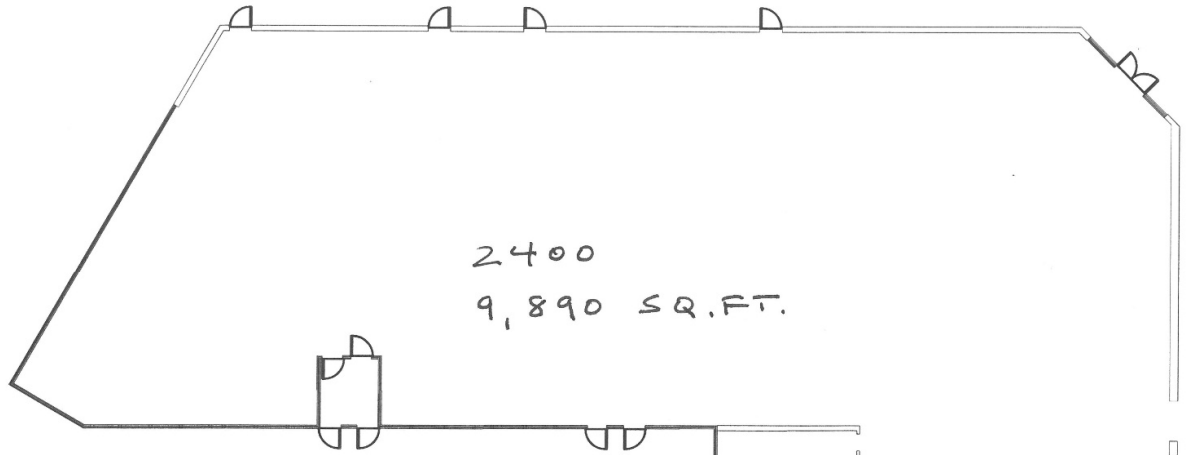
LANDMEIER ROAD



- **Location:** O'Hare Plaza
2400 - 2432 Landmeier Road
Elk Grove Village, IL 60007
- **Space Available:** 1,000 - 18,090 Sq. Ft. +/-
- **Total Building Size:** 18,090 Sq. Ft. +/-
- **Land Area:** 80,668 Sq. Ft. +/-
- **Parking:** 130 Stalls
- **Net Lease Price:** Negotiable
- **Escalation:** Negotiable
- **Real Estate Taxes:** \$7.69 Per Sq. Ft.
Escalation Lessee's Responsibility
- **CAM:** \$2.80 Per Sq. Ft.
Escalation Lessee's Responsibility
- **Lease Term:** Negotiable
- **Security Deposit:** Negotiable

All information herein is sources deemed reliable but not guaranteed accurate, subject to errors, omissions, and to change of price and term, prior to sale or lease, all without notice.

Contact Information • Mario Gullo • (847) 439-4400 Ext. 106 • mgullo@georgegullo.com
2050 E. Higgins Road • Elk Grove Village, IL 60007



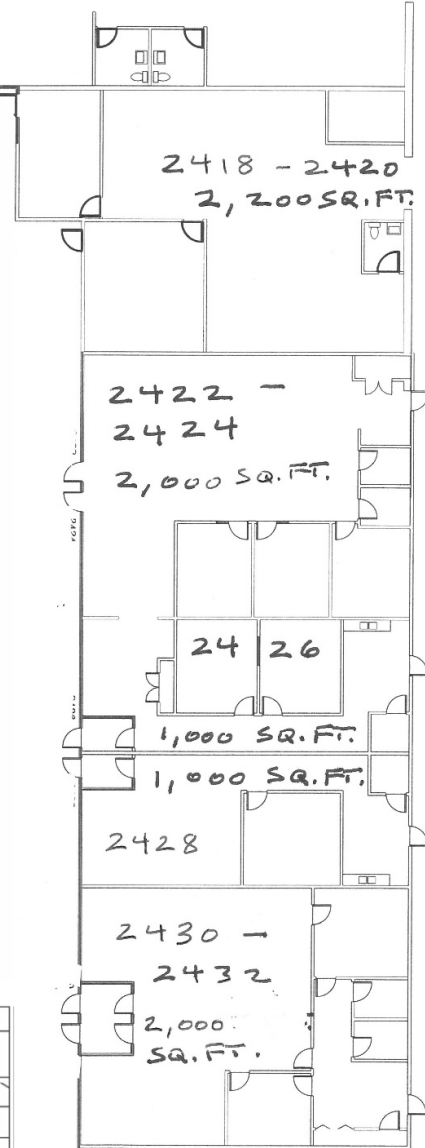
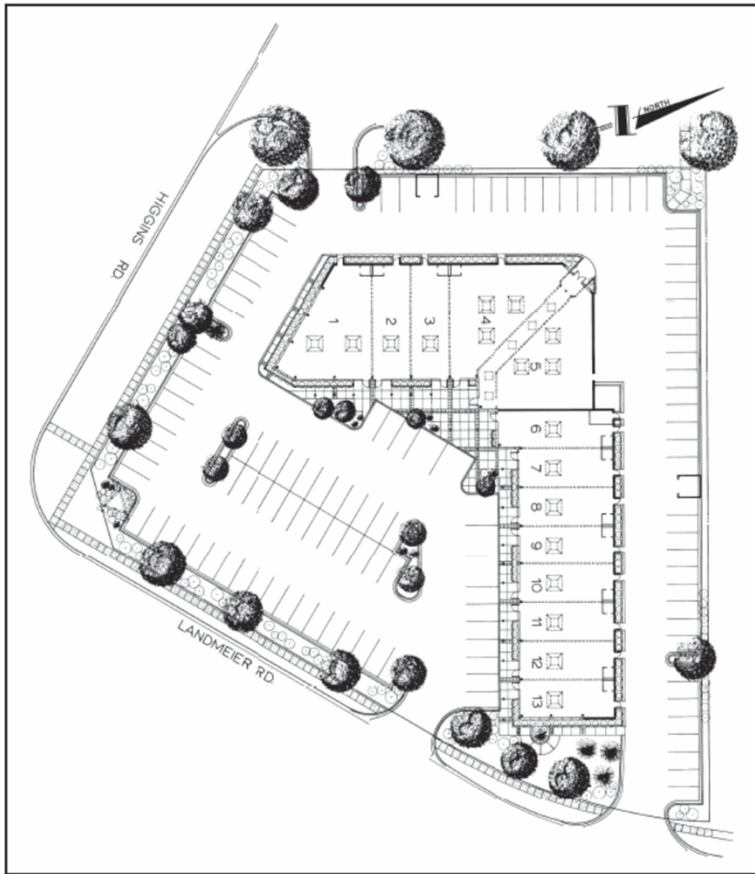
SQ. FTGES.

- 1. 2200 Sq. Ft.
- 2. 1200 Sq. Ft.
- 3. 1200 Sq. Ft.
- 4. 2705 Sq. Ft.
- 5. 2585 Sq. Ft.
- 6. 1200 Sq. Ft.
- 7. 1000 Sq. Ft.
- 8. 1000 Sq. Ft.
- 9. 1000 Sq. Ft.
- 10. 1000 Sq. Ft.
- 11. 1000 Sq. Ft.
- 12. 1000 Sq. Ft.
- 13. 1000 Sq. Ft.

PARKING
130 Stalls

LAND SIZE
80,668 Sq. Ft.

BLDG. SIZE
18,090 Sq. Ft.



All information herein is sources deemed reliable but not guaranteed accurate, subject to errors, omissions, and to change of price and term, prior to sale or lease, all without notice.

Contact Information • Mario Gullo • (847) 439-4400 Ext. 106 • mgullo@georgegullo.com

2050 E. Higgins Road • Elk Grove Village, IL 60007