

FOR LEASE

±9,000 SF INDUSTRIAL SPACE with Fenced Yard

5320 Eastgate Mall, San Diego, CA 92121



BO GIBBONS

Senior Advisor - Sales & Leasing
D (858) 699-3458
Bo@PacificCoastCommercial.com
Lic. 01367936

OFFICE (619) 469-3600

10721 Treena Street, Suite 200
San Diego, CA 92131
www.PacificCoastCommercial.com
Lic. 01209930

The information in this brochure is provided for general marketing purposes only and is believed to be reliable but not guaranteed. Interested parties should verify all details independently, including zoning, measurements, and property condition. The property owner and agents make no warranties or representations and reserve the right to change or withdraw the property or terms at any time without notice. This is not an offer or contract.

PROPERTY FEATURES



AVAILABILITY

- 5320 Eastgate Mall: ± 9,000 SF Industrial Space
- Available 4/1/2026



PROPERTY SIZE

- ± 16,072 SF
- ± 1 Acre Lot



SUITE FEATURES

- 2-Story Office Space
- Grade-Level Roll-Up Doors
- Private Restrooms (Including Shower)



PRICING

- Lease Rate: Call Agent

HIGHLIGHTS



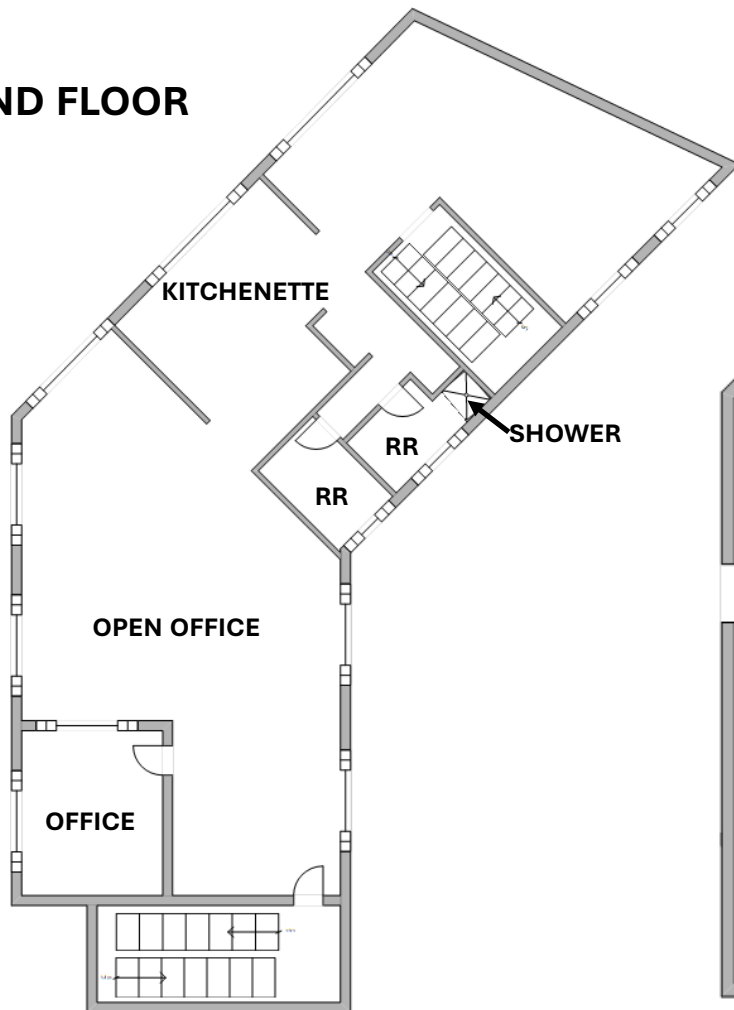
- Fenced & Secured Parking Area in the Back
- Easy Access to I-805 with Close Proximity to I-5, I-15 and Highways 52 & 163
- Located near Westfield UTC, Scripps Memorial Hospital, and UC San Diego



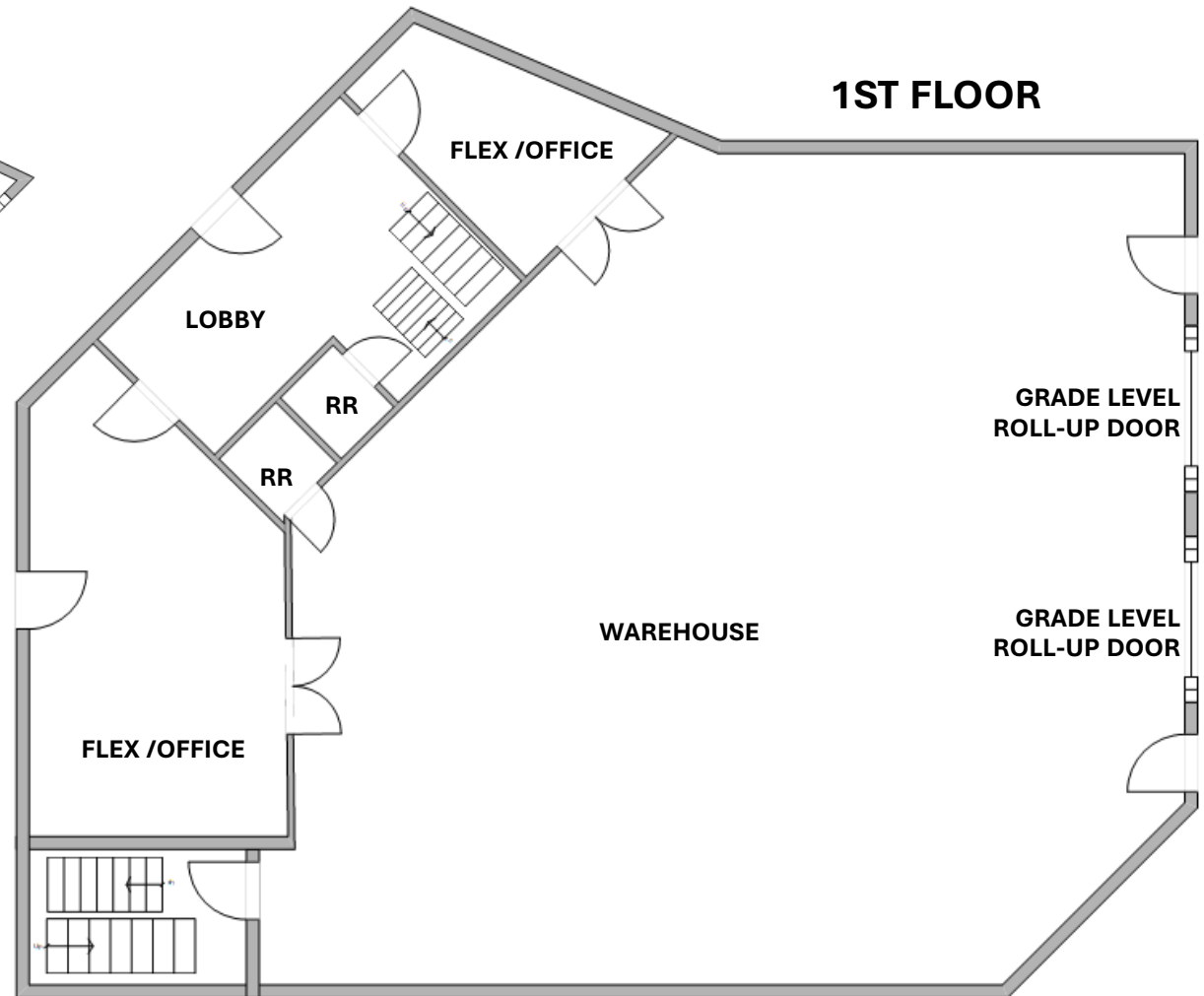
5320 Eastgate Mall: ± 9,000 SF Industrial Space

- 2 Grade-Level Roll-Up Doors, 4 Restrooms (Including Shower), Kitchenette
- Office: ± 3,840 SF (43%)
- Warehouse: ± 5,160 SF (57%)
- Lease Rate: Call Agent

2ND FLOOR



1ST FLOOR



SITE PLAN



SECURED PARKING AREA



LOCATION

