

# 2251 N. Squirrel Road

*Auburn Hills, MI*

- Class "A" Medical Facility
- Suites Available in Various Sizes
- Adjacent to Oakland University
- Seconds From I-75
- Professionally Managed Property
- Strategically Located with Affluent Payer Mix

## OFFICE BUILDING FOR LEASE

### FOR MORE INFORMATION:

Mason L. Capitani, SIOR  
Managing Partner  
248.637.7795  
MLcapitani@LMCap.com

Aaron Smith  
Vice President  
248.637.3515  
asmith@LMCap.com

248.637.9700 | [LMCap.com](http://LMCap.com)

Information contained herein was obtained from sources deemed to be reliable but is not guaranteed. Subjects to prior sales, changes of price or withdrawal.



**L. MASON CAPITANI**  
CORFAC INTERNATIONAL

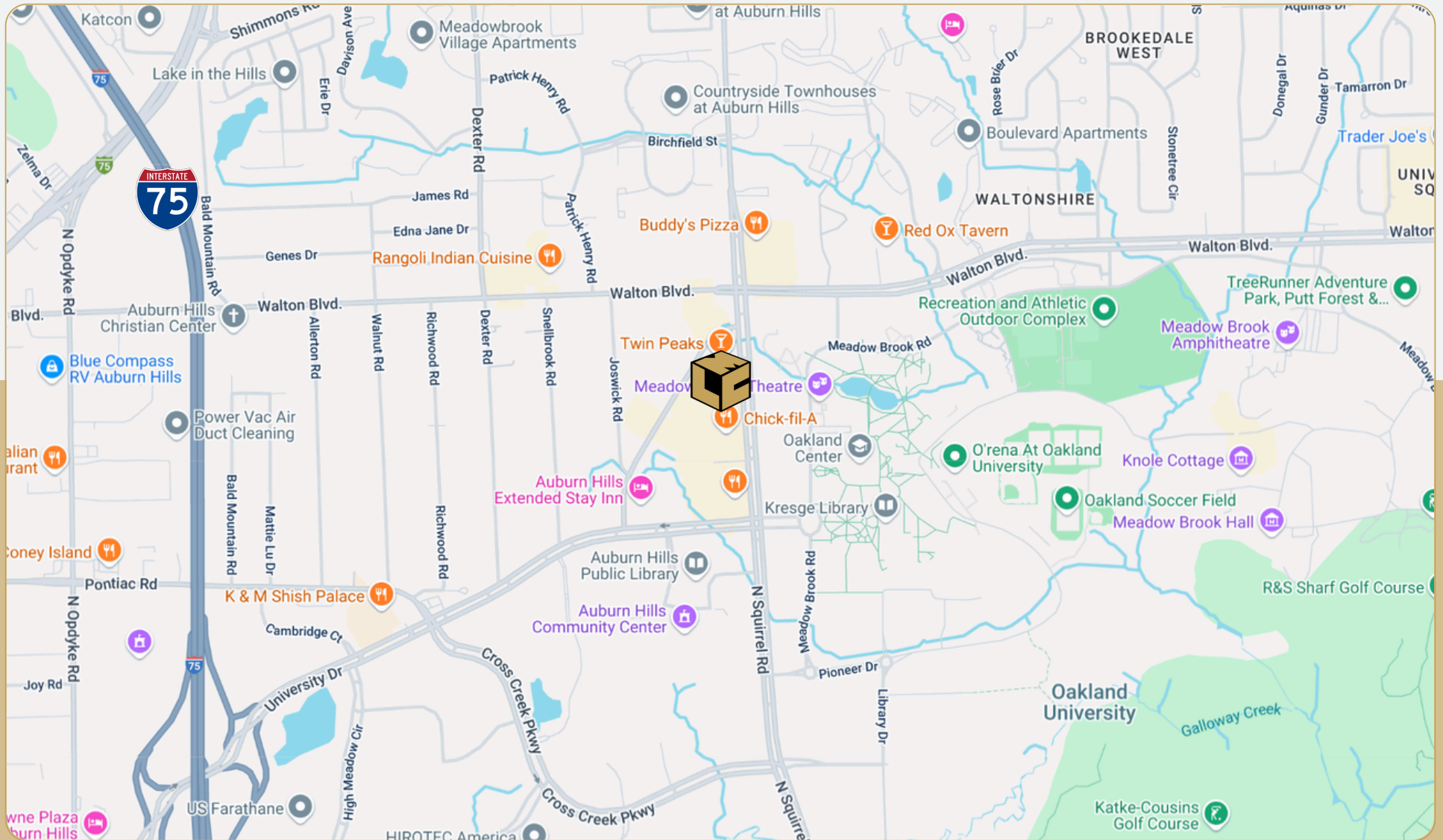
# 2251 N. Squirrel Road

Auburn Hills, MI



L. MASON CAPITANI

CORFAC INTERNATIONAL



248.637.9700 | LMCap.com

Information contained herein was obtained from sources deemed to be reliable but is not guaranteed. Subjects to prior sales, changes of price or withdrawal.

# 2251 N. Squirrel Road

Auburn Hills, MI



L. MASON CAPITANI  
CORFAC INTERNATIONAL

## Office Property Details:

### Details:

**Location Description:** Walton Blvd & Squirrel Rd

**Building Type:** Office

**Class:** A

**Zoning:** Office

**Floors:** 3

**Year Built:** 2000

**Year Renovated:** -

**Gross SF:** 55,269 SF

**Total Rentable SF:** 55,269 SF

**Available SF:** 6,155 SF

**Min/Max SF:** 1,295 SF - 1,839 SF

**Acres:** 3.6

**Multitenant:** Yes

**Parcel ID:** 14-13-176-011

**Property Description:** Class "A" medical office building located in the heart of Auburn Hills.

### Economic:

**Min/Max Rental Rate:** \$19.75/SF

**Rental Terms:** NNN

**Annual Escalations:** \$0.50/SF

**Load Factor:** 15.53%

**Operating Expenses:** \$11.00/SF

**Occupancy:** Immediate

**Parking:** 5/1,000

**Partition Allowance:** Negotiable

**Signage:** Suite Entry

**Status:** Existing

# 2251 N. Squirrel Road

*Auburn Hills, MI*



## Available Suites:

**Suite 105:** 1,635 SF

**Suite 206:** 1,839 SF

**Suite 303:** 1,295 SF

**Suite 310:** 1,386 SF



248.637.9700 | [LMCap.com](http://LMCap.com)

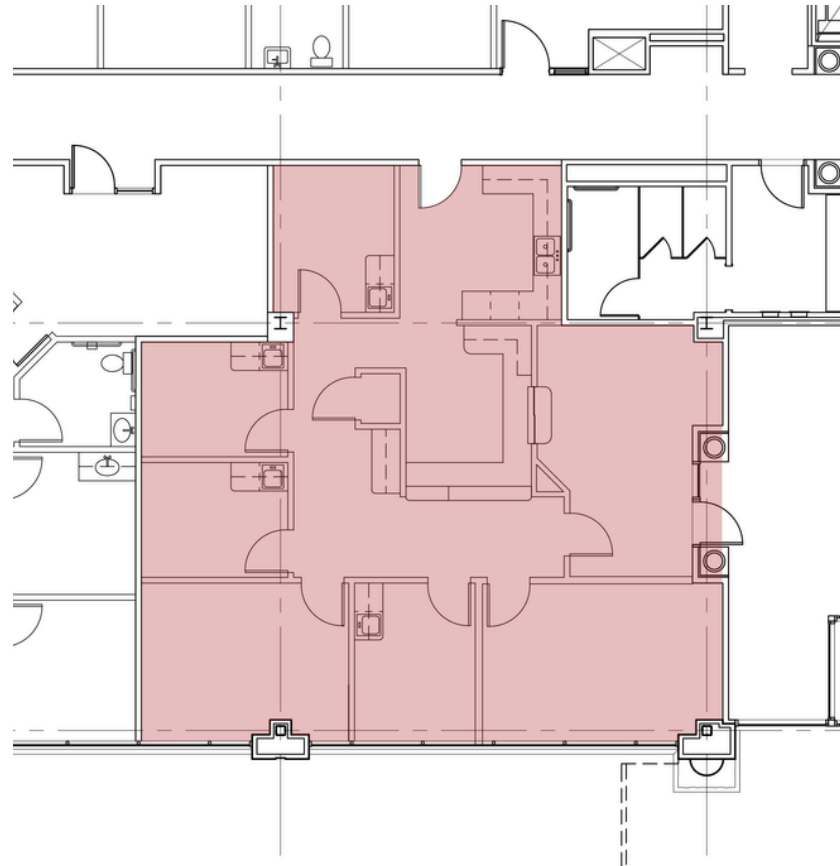
Information contained herein was obtained from sources deemed to be reliable but is not guaranteed. Subjects to prior sales, changes of price or withdrawal.

# 2251 N. Squirrel Road

*Auburn Hills, MI*



## First Floor Vacancies:



Suite Number	Square Footage	Video Tour
105	1,635 SF	<a href="#">View Here</a>

248.637.9700 | LMCap.com

Information contained herein was obtained from sources deemed to be reliable but is not guaranteed. Subjects to prior sales, changes of price or withdrawal.

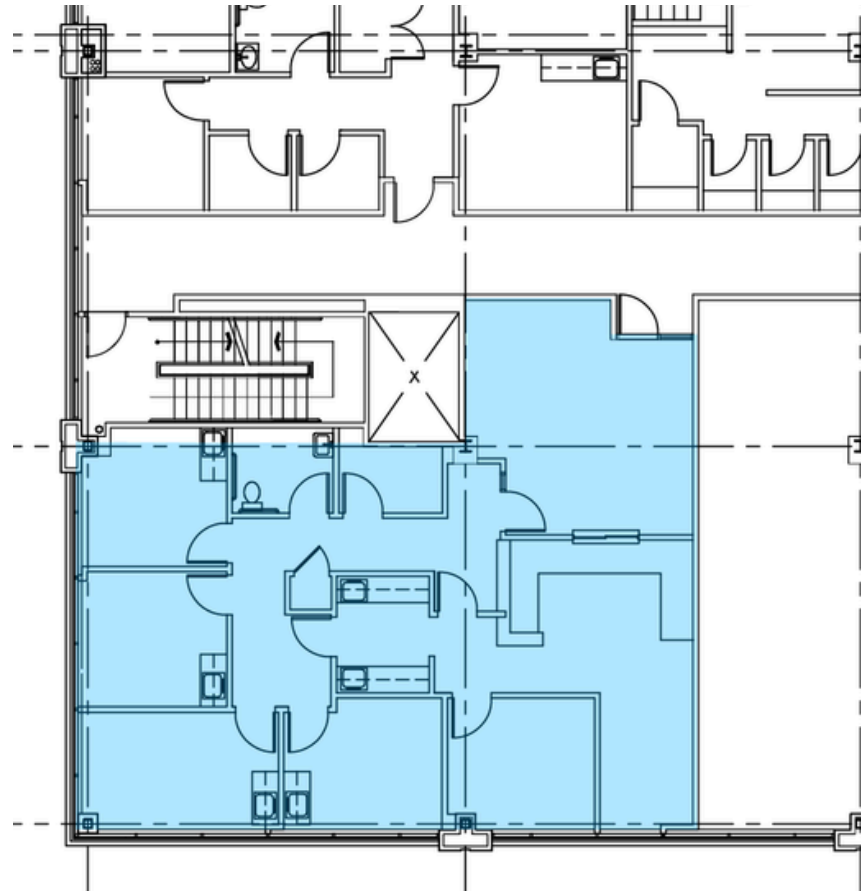
# 2251 N. Squirrel Road

*Auburn Hills, MI*



**L. MASON CAPITANI**  
CORFAC INTERNATIONAL

## Second Floor Vacancies:



Suite Number	Square Footage	Video Tour
206	1,839 SF	<a href="#">View Here</a>

**248.637.9700 | LMCap.com**

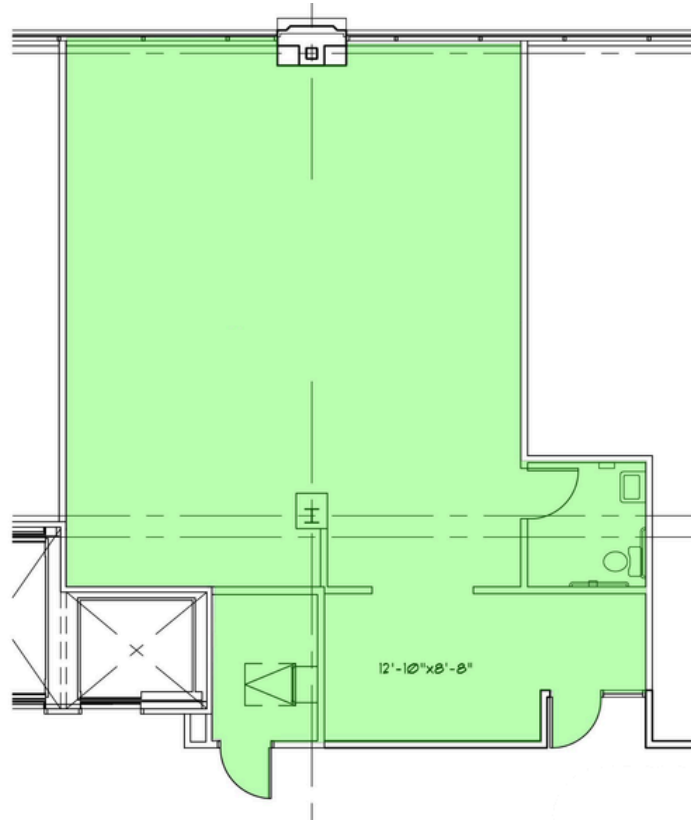
Information contained herein was obtained from sources deemed to be reliable but is not guaranteed. Subjects to prior sales, changes of price or withdrawal.

# 2251 N. Squirrel Road

*Auburn Hills, MI*



## Third Floor Vacancies:



Suite Number	Square Footage	Video Tour
303	1,295 SF	<a href="#">View Here</a>

248.637.9700 | LMCap.com

Information contained herein was obtained from sources deemed to be reliable but is not guaranteed. Subjects to prior sales, changes of price or withdrawal.

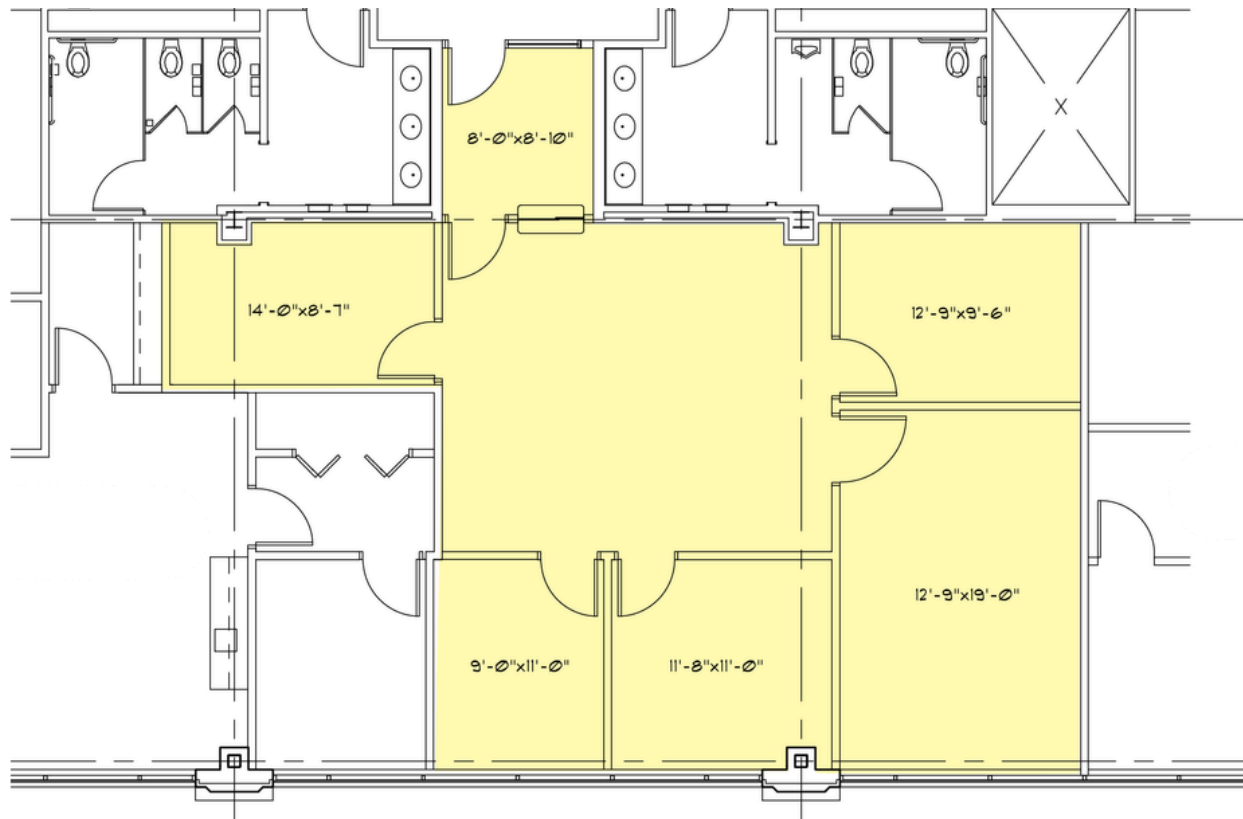
# 2251 N. Squirrel Road

Auburn Hills, MI



L. MASON CAPITANI  
CORFAC INTERNATIONAL

## Third Floor Vacancies:



Suite Number	Square Footage	Video Tour
310	1,386 SF	<a href="#">View Here</a>

248.637.9700 | LMCap.com

Information contained herein was obtained from sources deemed to be reliable but is not guaranteed. Subjects to prior sales, changes of price or withdrawal.