

PRIME RESTAURANT SPACE AVAILABLE - LEAWOOD, KS

TOWN CENTER PLAZA

Total Square Footage: 11,055 SF (First Floor: 7,887 / Second Floor: 3,168)



Property Highlights:

- Located in the prominent Leawood Town Center
- Existing building and parking in excellent condition
- \$124,428 Median income within 3 miles

Demographics			
Radius	Population	Daytime Population	Median Household Income
1 Mile	6,673	32,859	\$143,514
3 Miles	78,645	103,780	\$124,428
5 Miles	219,893	169,915	\$117,139



Frank Newman Commercial Real Estate, Inc.
116 West 47th Street, Suite 212
Kansas City, Missouri 64112
816.531.1050 | www.franknewmancommercial.com

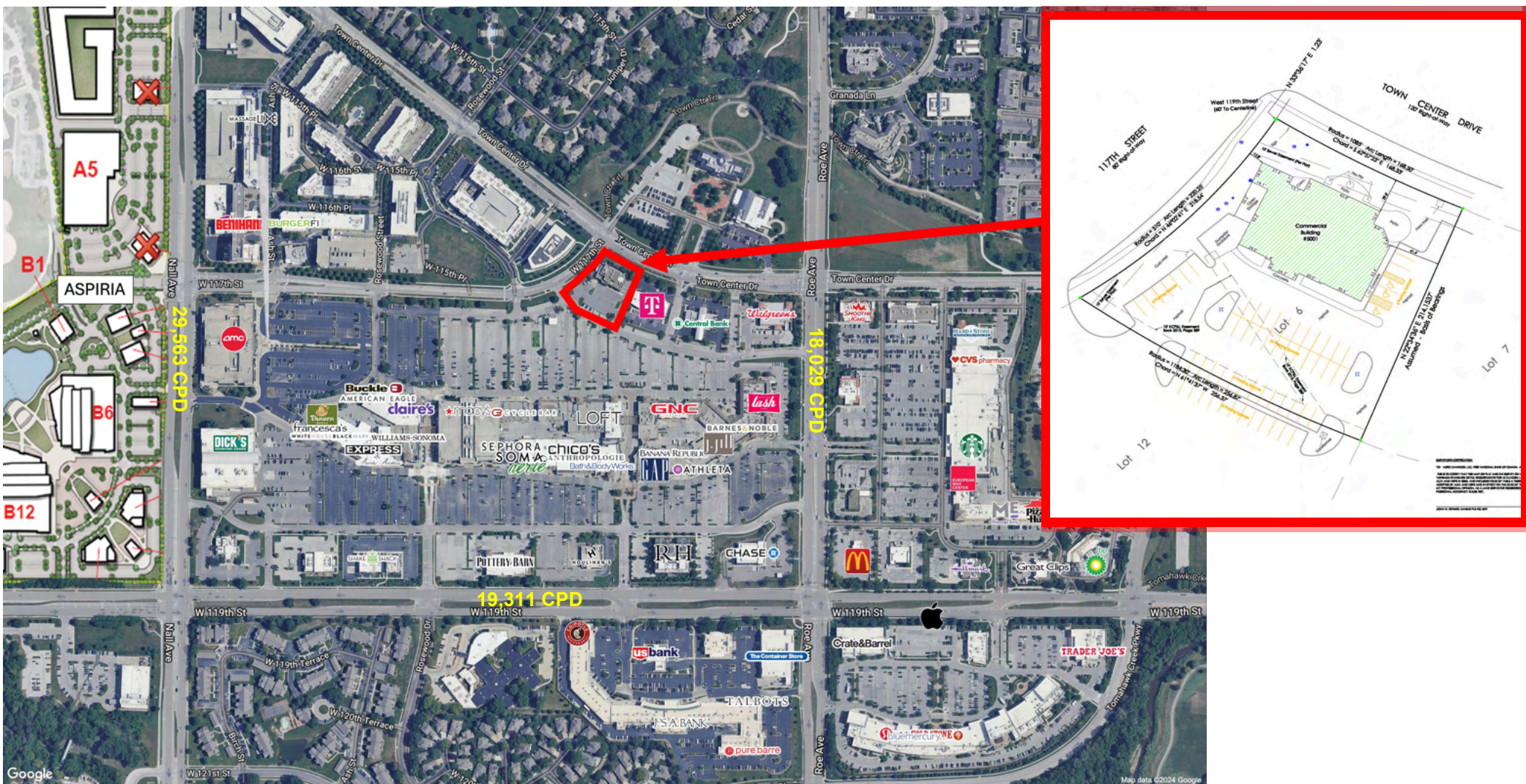
Frank Newman
o 816.531.1050
m 913.340.5757
frank@franknewmancommercial.com



PRIME RESTAURANT SPACE AVAILABLE - LEAWOOD, KS

TOWN CENTER PLAZA

Total Square Footage: 11,055 SF (First Floor: 7,887 / Second Floor: 3,168)



Frank Newman Commercial Real Estate, Inc.
116 West 47th Street, Suite 212
Kansas City, Missouri 64112
816.531.1050 | www.franknewmancommercial.com

Frank Newman
o 816.531.1050
m 913.340.5757
frank@franknewmancommercial.com



