

6
ROSLYN PLACE
MOUNT VERNON, NY

FOR LEASE



PROPERTY INFORMATION

The whole property available for lease

Or

3 Spaces Available:

Unit 1: Office 1115 SQFT w/ Warehouse
2700 SQFT

Unit 2: Yard 8250 SQFT

Unit 3: Yard 5000 SQFT w/Garage 903 SQFT

Building \$19 PSF / Modified Gross

Land \$10 PSF / NNN

Located in the heart of Mount Vernon's Industrial Center this rare opportunity combining Office, Warehouse, and Fenced Yard will not last. Lease it ALL or whatever you need.

With its strategic location, this property offers easy access to major highways and mass transit links, making it a convenient hub for businesses of all types.

Call for more information.

CONTACTS

PAUL MOULINS

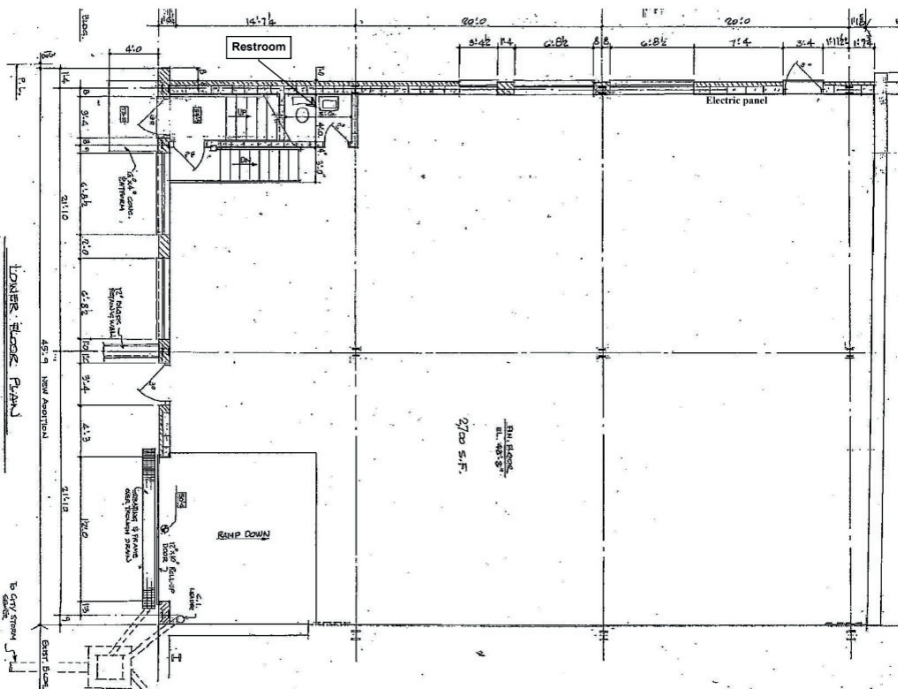
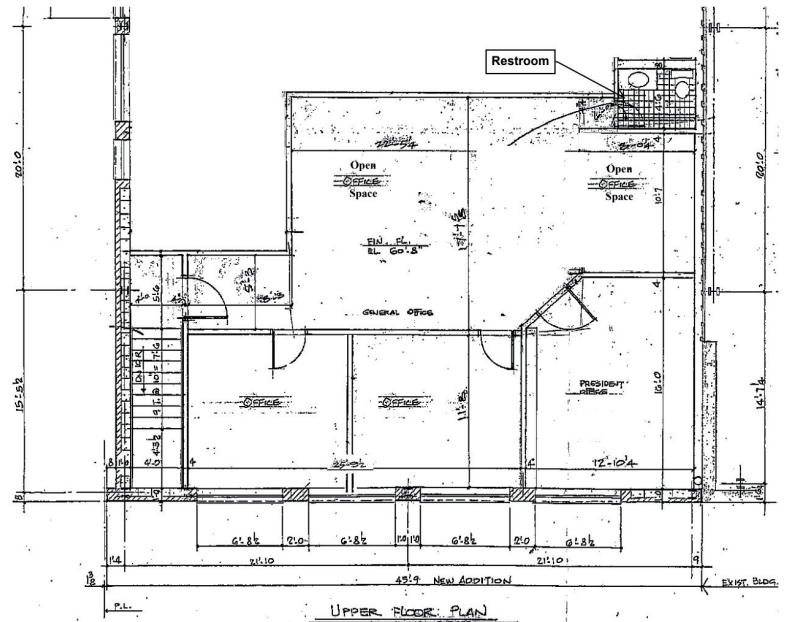
Managing Director

PMoulins@kw.com

C: 914-714-3777

6 ROSLYN PLACE, MOUNT VERNON, NY

Office Floor Plan



Warehouse Floor Plan

CONTACTS

PAUL MOULINS
Managing Director
PMoulins@kw.com
C: 914-714-3777

