



±5,000 TO ±6,620-SF 2ND FLOOR OFFICE SPACE BERKELEY – 12-18 PRIVATES, SHORT WALK TO BART



2484 Shattuck Avenue Suite 250
Berkeley CA

Represented by:

Matt Gondak

510 450 1434

mgondak@mrecommercial.com

CA DRE No: 00832220

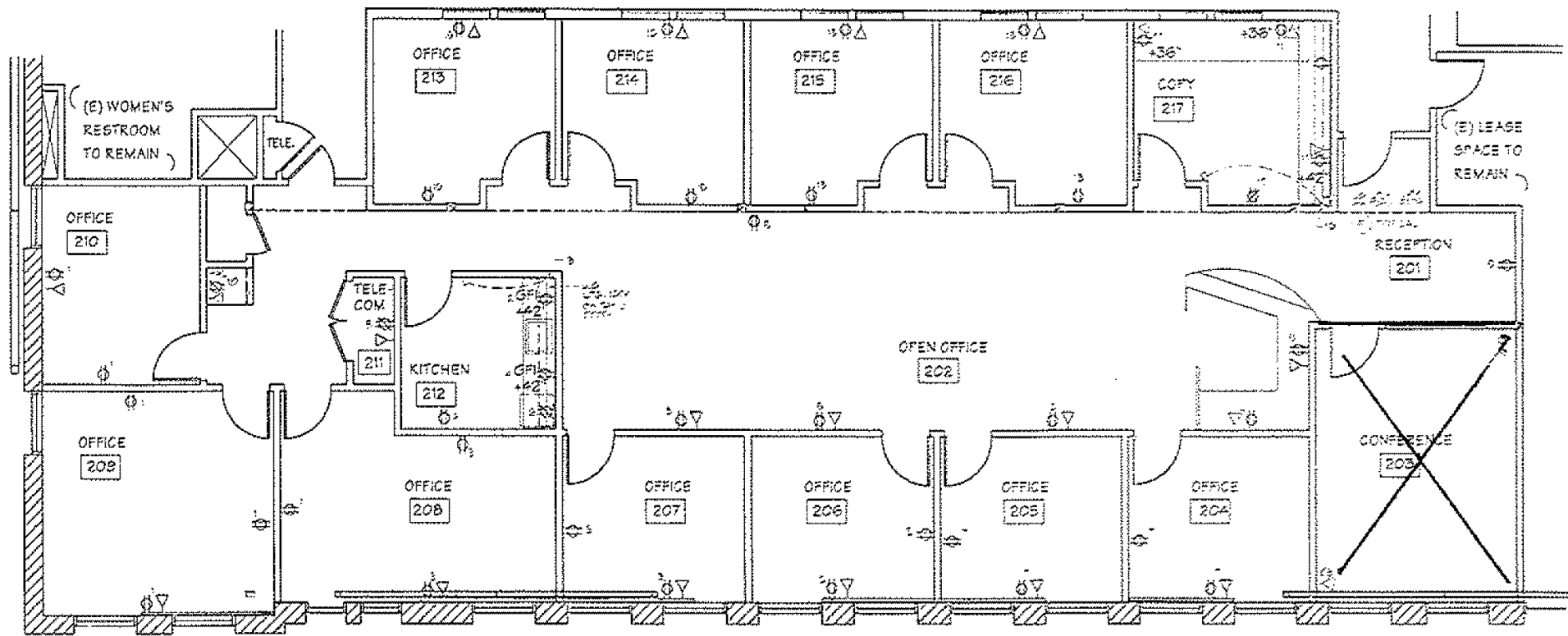
\$3.25 PSF
IG

Second floor office space with 12 privates, conference room, kitchenette, open areas and workspaces. The contiguous ±1,620-SF space may be added for a total of ±6,620 SF, with 18 private offices. A short [walk to BART](#).





2484 Shattuck Ave Suite 250 — ±5,000-SF
Combining Adjacent Suite 200 at 1,620 SF Expands Space to ±6,620-SF



2484 Shattuck Ave Berkeley CA Suite 250



