



CORPORATION BUILDING

*Turnkey Creative Offices
Available for Lease in
Downtown Los Angeles*

724 S SPRING ST
LOS ANGELES, CA 90014

JOHN ANTHONY, SIOR
213.225.7218
john.anthony@kidder.com
LIC N° 01226464

CHRISTOPHER STECK, CCIM
213.225.7231
christopher.steck@kidder.com
LIC N° 01871338

ANTHONYSTECKTEAM.COM
KIDDER.COM



MODERN CREATIVE OFFICE EXPERIENCE

Discover modern creative offices at the Corporation Building in the heart of a central creative hub—featuring, exposed ceilings, polished concrete floors, natural light, and convenient access to the Metro, freeways, and DTLA’s top dining and entertainment.

BUILDING SIZE	70,008 SF
AVAILABLE	925 RSF-4,537 RSF
LEASE RATE	\$24.00 (SF/YR), Modified Gross*
STORIES	14
BUILT/RENOV.	1916/2022
PARKING	Two-story parking structure

SIX

SUITES AVAILABLE

\$24.00 MG*

LEASE RATE (SF/YR)

*The rate is for the many move-in ready suites that may require only cosmetic work. Additional work would increase the rate.

CORPORATION BUILDING

CREATIVE. COMPETITIVE. OFFICE.

CORPORATION
BUILDING

SUITE AVAILABILITY

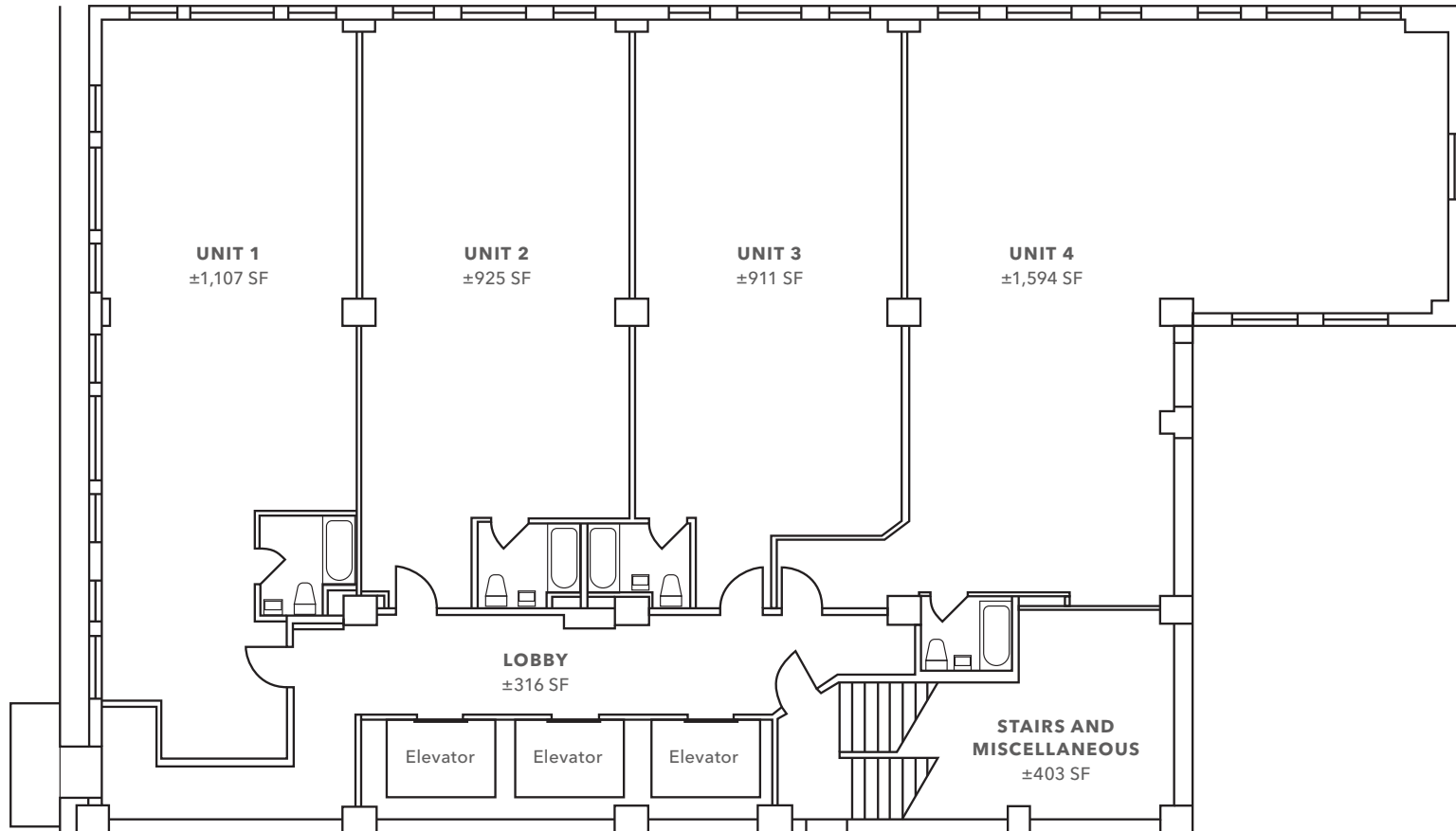
Suite #	RSF	Notes	Video Tour
301-302	2,032	Turnkey creative offices, exposed high ceilings, natural light, and polished concrete floors.	↓
501-504	4,537	Turnkey creative offices, exposed high ceilings, natural light, and polished concrete floors.	↓
701*	1,107	Turnkey creative offices, exposed high ceilings, natural light, and polished concrete floors.	↓
702*	925	Turnkey creative offices, exposed high ceilings, natural light, and polished concrete floors.	↓
1102-1104	3,430	Turnkey creative offices, exposed high ceilings, natural light, and polished concrete floors.	↓
1203-1204	2,505	Turnkey creative offices, exposed high ceilings, natural light, and polished concrete floors.	↓

*Separate pricing on these suites

CORPORATION BUILDING



TYPICAL EXISTING FLOOR PLAN



925 RSF-4,537 RSF

AVAILABLE

NOW

AVAILABLE

PRIME HISTORIC CORE LOCATION

Nestled between the Fashion District, Arts District, and Financial District

Metro and freeways less than a mile away

Surrounded by DTLA's top restaurants, boutiques, museums, and entertainment

Located above the Corporation Food Hall, a ground-floor dining experience offering different types of cuisines

6 MIN

CA-110 VIA
W 8TH ST

11 MIN

US-101 VIA
S BROADWAY



CORPORATION BUILDING

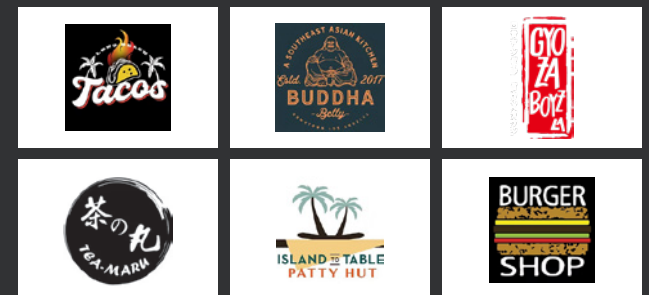


Corporation Food Hall is a boutique food hall located on 724 South Spring Street in the heart of DTLA, offering a lively, communal dining experience with a variety of global food stalls under one roof.

It opened in August 2017 on the ground floor of the historic Corporation Building and has since become a go-to lunch and dinner spot for locals, workers, and visitors exploring downtown's creative and cultural hub. Unlike larger food halls such as Grand Central Market, Corporation is more intimate and curated, with several independent vendors serving diverse cuisines and culinary concepts. It's designed as a modern take on the traditional food court – pairing relaxed communal seating with chef-driven stalls offering flavorful, often globally inspired dishes. Indoor seating and an enclosed outdoor patio make it a great place for casual meals, people-watching, or grabbing food with coworkers or friends.



SELECT FOOD & DRINK OPTIONS



CORPORATION BUILDING

Exclusively leased by

JOHN ANTHONY, SIOR
213.225.7218
john.anthony@kidder.com
LIC N° 01226464

CHRISTOPHER STECK, CCIM
213.225.7231
christopher.steck@kidder.com
LIC N° 01871338

ANTHONYSTECKTEAM.COM
KIDDER.COM

This information supplied herein is from sources we deem reliable. It is provided without any representation, warranty, or guarantee, expressed or implied as to its accuracy. Prospective Buyer or Tenant should conduct an independent investigation and verification of all matters deemed to be material, including, but not limited to, statements of income and expenses. Consult your attorney, accountant, or other professional advisor. All Kidder Mathews designs are the sole property of Kidder Mathews. Branded materials and layouts are not authorized for use by any other firm or person.

