

FOR LEASE RESTAURANT SPACE-DOWNTOWN DETROIT



1452 Randolph Street, Detroit, MI 48226

TERRY EDMONDSON

President
313.243.9013
te@exclusive-realty.com

STEVE SAGMANI

Chief Executive Officer
248.833.6601
steve@exclusive-realty.com

EXCLUSIVE REALTY

28 West Adams
Detroit, MI 48226
248.406.4444
exclusive-realty.com

DISCLAIMER

CONFIDENTIALITY AND DISCLAIMER:

DISCLOSURE:

All materials and information received or derived from Exclusive Realty its directors, officers, agents, advisors, affiliates and/or any third party sources are provided without representation or warranty as to completeness, veracity, or accuracy, condition of the property, compliance or lack of compliance with applicable governmental requirements, developability or suitability, financial performance of the property, projected financial performance of the property for any party's intended use or any and all other matters.

Neither Exclusive Realty its directors, officers, agents, advisors, or affiliates makes any representation or warranty, express or implied, as to accuracy or completeness of the any materials or information provided, derived, or received. Materials and information from any source, whether written or verbal, that may be furnished for review are not a substitute for a party's active conduct of its own due diligence to determine these and other matters of significance to such party. Exclusive Realty will not investigate or verify any such matters or conduct due diligence for a party unless otherwise agreed in writing.

EACH PARTY SHALL CONDUCT ITS OWN INDEPENDENT INVESTIGATION AND DUE DILIGENCE.

Any party contemplating or under contract or in escrow for a transaction is urged to verify all information and to conduct their own inspections and investigations including through appropriate third-party independent professionals selected by such party.

All financial data should be verified by the party including by obtaining and reading applicable documents and reports and consulting appropriate independent professionals. Exclusive Realty makes no warranties and/or representations regarding the veracity, completeness, or relevance of any financial data or assumptions. Exclusive Realty does not serve as a financial advisor to any party regarding any proposed transaction. All data and assumptions regarding financial performance, including that used for financial modeling purposes, may differ from actual data or performance. Any estimates of market rents and/or projected rents that may be provided to a party do not necessarily mean that rents can be established at or increased to that level. Parties must evaluate any applicable contractual and governmental limitations as well as market conditions, vacancy factors and other issues in order to determine rents from or for the property.

Legal questions should be discussed by the party with an attorney. Tax questions should be discussed by the party with a certified public accountant or tax attorney. Title questions should be discussed by the party with a title officer or attorney. Questions regarding the condition of the property and whether the property complies with applicable governmental requirements should be discussed by the party with appropriate engineers, architects, contractors, other consultants and governmental agencies. All properties and services are marketed by Exclusive Realty in compliance with all applicable fair housing and equal opportunity laws.

INVESTMENT SUMMARY

PROPERTY DESCRIPTION

Exclusive Realty is pleased to present a premier leasing opportunity at 1420 Randolph Street, Detroit, MI, 48226. This contemporary property offers versatile space, ideal for retail, restaurant, or office use. With large windows flooding the space in natural light and high ceilings creating an open and airy atmosphere, this property provides an inviting environment for clients and customers. The location's proximity to major thoroughfares and public transportation ensures easy accessibility. Embrace the potential of this prime leasing opportunity and position your business for success in the heart of Detroit.

PROPERTY HIGHLIGHTS

- 5,300 Square Feet of Retail space on the First Floor
- Includes a great Mezzanine Space
- Space is completely new and white boxed for a Restaurant
- Paradise Valley formerly known as Harmonie Park
- Located One Block from Sports Stadiums, Detroit Opera House and Detroit Music Hall
- Aggressive Terms
- Immediate Occupancy
- All space accessible by a New Elevator
- Proximity to major thoroughfares for easy accessibility
- Ample space for customer or client interactions
- Prime location in the heart of Detroit's vibrant commercial district
- Densely Populated area with over 200K Residents within a 5 Mile Radius



LEASE RATE

CALL FOR DETAILS

1452 Randolph Street, Detroit, MI 48226



LOCATION SUMMARY



LOCATION DESCRIPTION

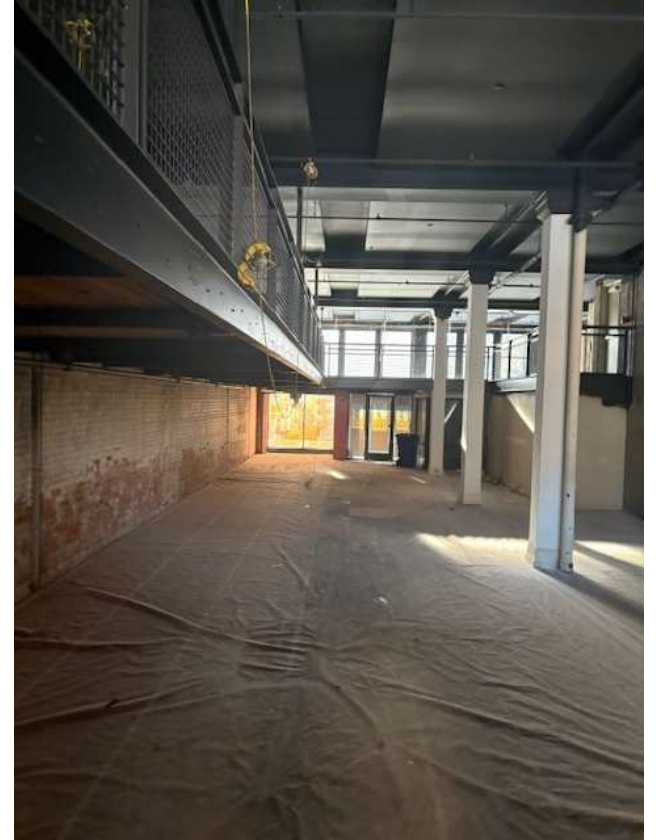
Detroit, is the most populous city in the U.S. state of Michigan. It is the largest U.S. city on the Canadian border and the county seat of Wayne County. Detroit had a population of 639,111 at the 2020 census, making it the 26th-most populous city in the United States. The Metro Detroit area, home to 4.3 million people, is the second-largest in the Midwest after the Chicago metropolitan area and the 14th-largest in the United States. A significant cultural center, Detroit is known for its contributions to music, art, architecture and design, in addition to its historical automotive background.

Immerse yourself in the vibrant Detroit community surrounding the property in MI. Explore the bustling downtown area with a variety of dining, entertainment, and cultural attractions. Enjoy access to nearby landmarks such as the Ford Field, Comerica Park, and the Detroit Institute of Arts.

The location offers convenient access to major highways, public transportation, and a range of commercial amenities. Experience the rich history and exciting revitalization of Detroit, making it an ideal setting for an office or office building tenant seeking a dynamic and energetic environment to thrive and grow.



ADDITIONAL PHOTOS



DEMOGRAPHICS MAP & REPORT



POPULATION	3 MILES	5 MILES	10 MILES
Total Population	71,796	200,932	815,369
Average Age	40	38	38
Average Age (Male)	39	37	37
Average Age (Female)	41	38	38

HOUSEHOLDS & INCOME	3 MILES	5 MILES	10 MILES
Total Households	37,938	85,534	317,356
# of Persons per HH	1.9	2.3	2.6
Average HH Income	\$62,643	\$55,979	\$61,855
Average House Value	\$305,093	\$209,583	\$162,295

Demographics data derived from AlphaMap



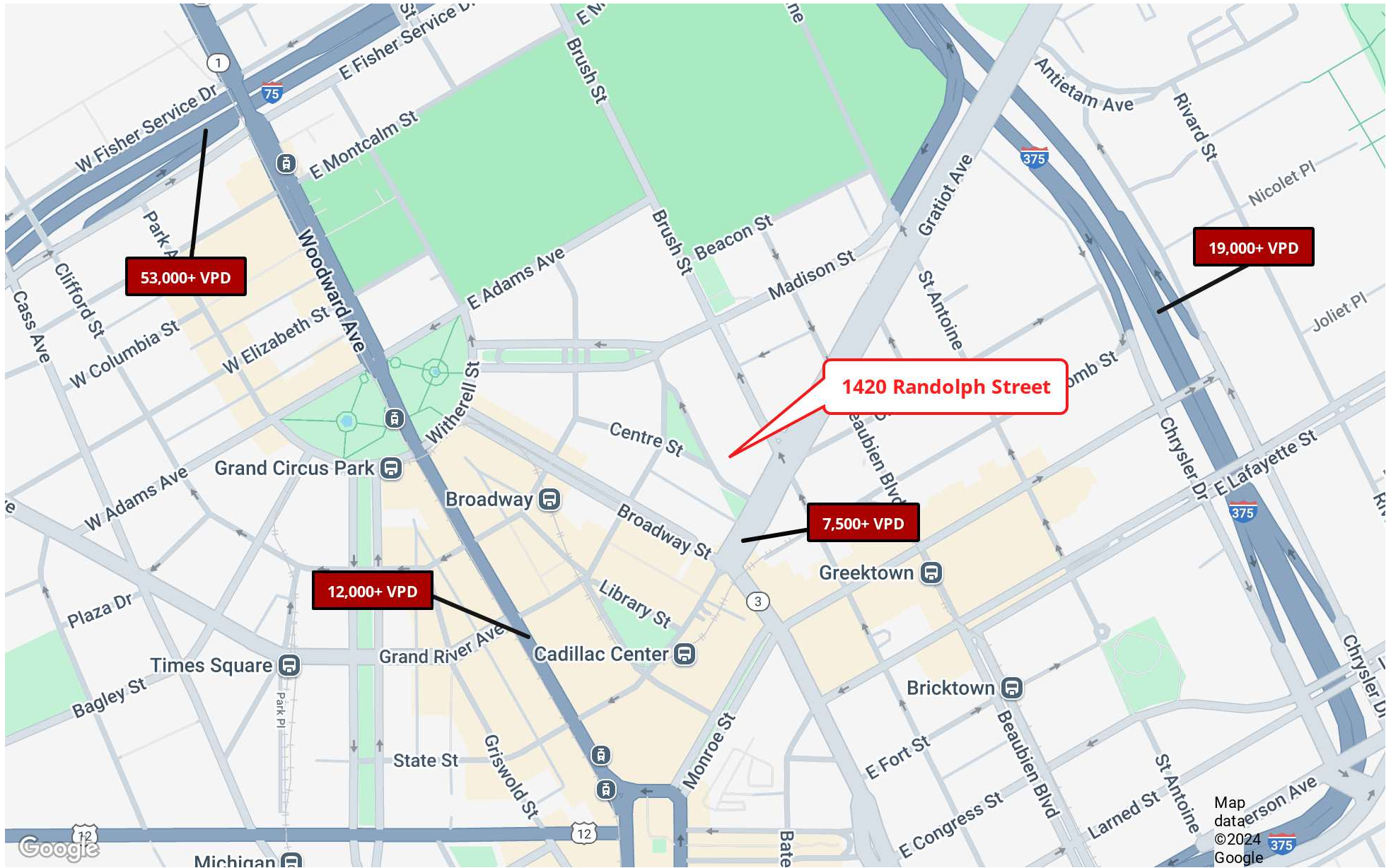
AERIAL MAP



1452 Randolph Street, Detroit, MI 48226



PARCEL AND TRAFFIC COUNTS



1452 Randolph Street, Detroit, MI 48226

Map data © 2024 Google



MEET THE TEAM



TERRY EDMONDSON

President

Direct: 313.243.9013 Cell: 313.590.0649
te@exclusive-realty.com



STEVE SAGMANI

Chief Executive Officer

Direct: 248.833.6601 Cell: 248.819.8077
steve@exclusive-realty.com