

# For lease

3,500 SF - Suite D

783 Palmyrita Avenue  
Riverside, CA 92507

## Property specifications

- 400A 240V 3P 4W
- Suite D - '12' clear height
- Suite D Offices: +/- 408
- 1 drive-in door(s) 12'x12'
- Parking: 17 spaces
- Zoning: BMP



**Bowen James**

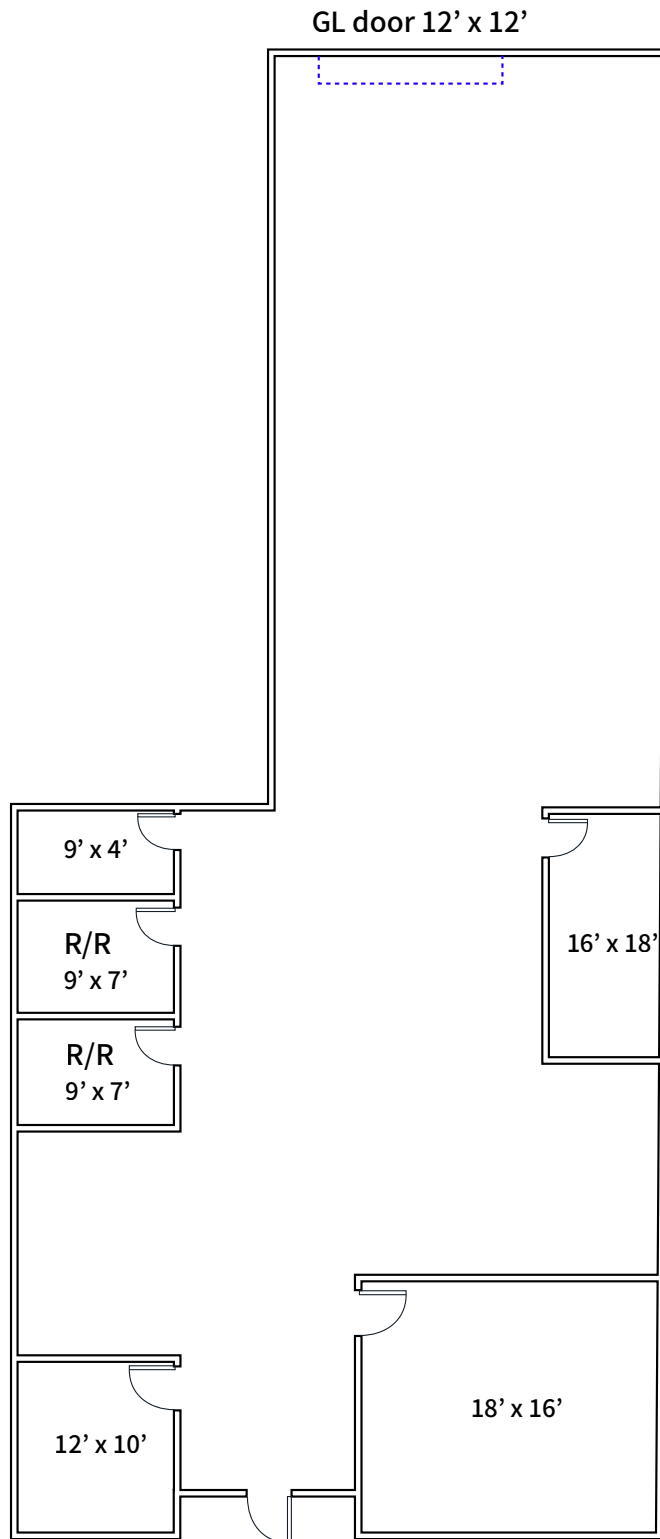
Associate

+1 909-467-6865

[bowen.james@jll.com](mailto:bowen.james@jll.com)

Lic. #02243986

# Floorplan Suite D



*Not to Scale\**

# Strategic Riverside Business Hub



Prime Transportation Access:  
Direct connectivity to SR-91 and I-215 at the heart of Southern California's logistics network



Established Infrastructure:  
Major distribution hub with proven supply chains and logistics capabilities



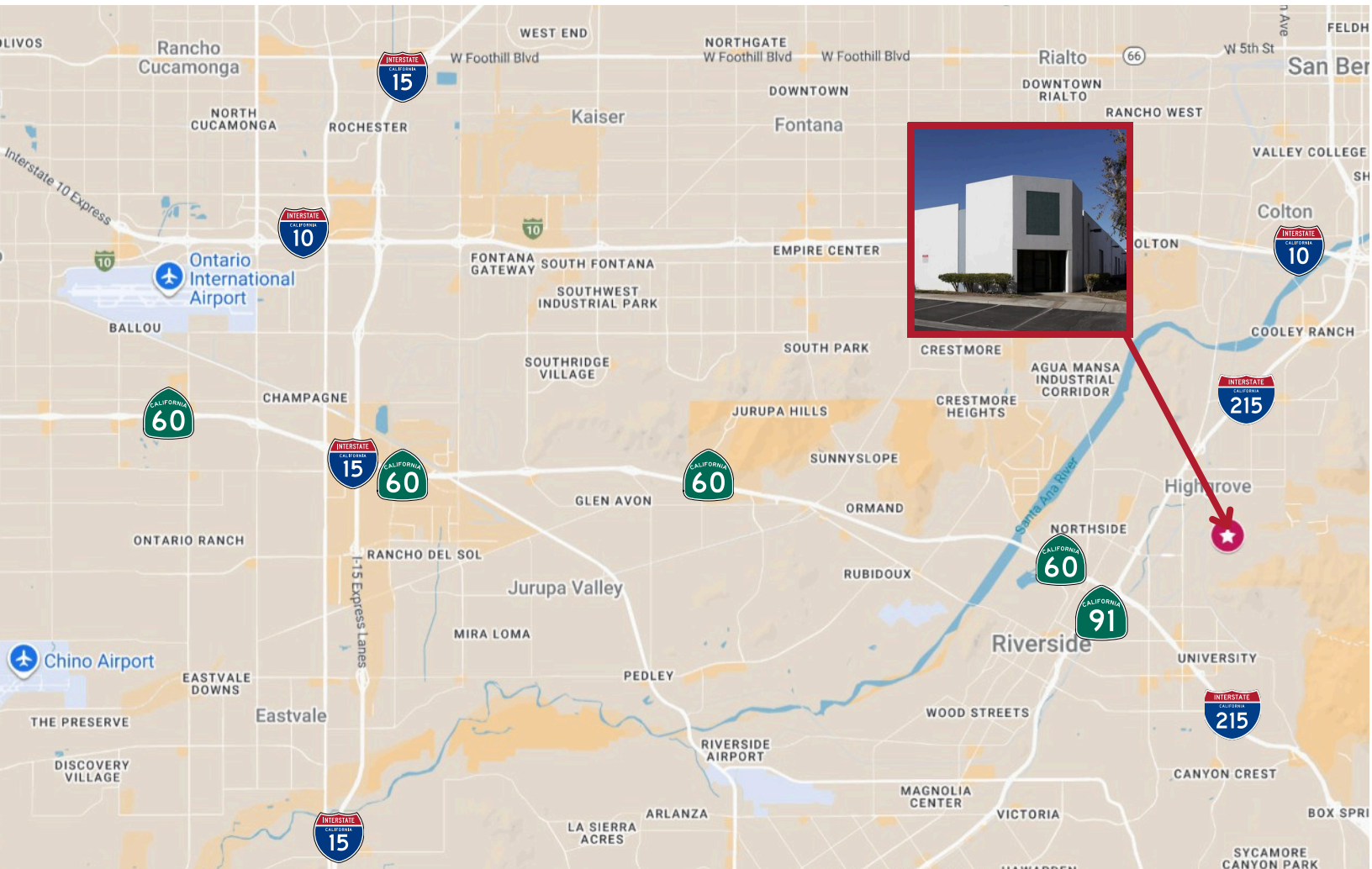
Skilled Workforce:  
March Air Reserve Base aerospace industry and UC Riverside provide technical talent and research partnerships



Cost Advantage:  
Significantly lower operational costs compared to coastal markets



Strong Market:  
Robust local purchasing power in the rapidly expanding Inland Empire



**Bowen James**

Associate

+1 909-467-6865

[bowen.james@jll.com](mailto:bowen.james@jll.com)

Lic. #02243986

Jones Lang LaSalle Brokerage, Inc. License #: 01856260