



Second Floor Office Space

- 6,328.10 sf of office space now available on the second floor of this downtown Prince Albert building
- Ample metered street parking for clients, on site parking for staff to be negotiated
- Close to all downtown amenities
- Office furnishings can also be negotiated
- Prince Albert is the main business hub for all of Northern Saskatchewan communities



Available Area:
6,328.10 sf



Lease Rate:
\$12.00 psf



Op Costs:
TBD



Parking:
To be negotiated

For further information

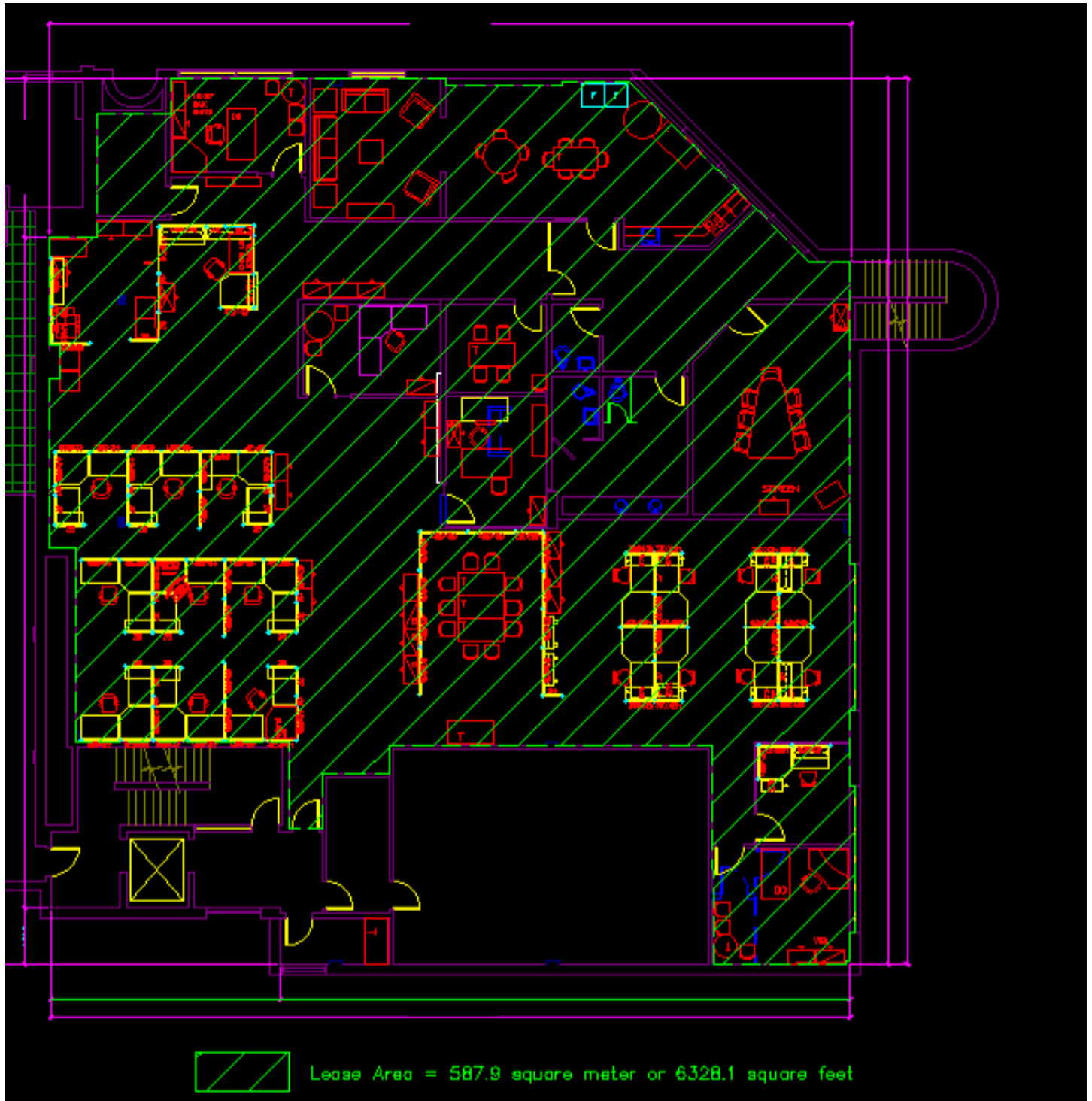
Joe Trudelle

Associate Broker
+1 306 559 9007
joe.trudelle@avisonyoung.com

Jeremy Schick

Commercial Sales & Leasing
+1 306 559 9004
jeremy.schick@avisonyoung.com

avisonyoung.com



The above image is not to scale and may not represent the current layout and furnishings.

Joe Trudelle

Associate Broker
+1 306 559 9007

joe.trudelle@avisonyoung.com

Jeremy Schick

Commercial Sales & Leasing
+1 306 559 9004

jeremy.schick@avisonyoung.com

