

# 4%

# Co-operating Broker Fee\*

## RenCorpRealty<sup>AD</sup>



  
Centrally Located

  
Renovated

  
Signage Opportunities

  
**FREE Parking**

## SECURE PARKING AVAILABLE NOW LEASING

## RENTAL RATES

From \$12-16 RSF\*  
Full Service (Less Janitorial)

*\*Rental rate based on TI request and length of term*

## SPACE AVAILABLE

977 - 19,867 SF

## THE HISTORIC HOLLEY MASON

157 S Howard St, Spokane WA

### NEIGHBORHOOD

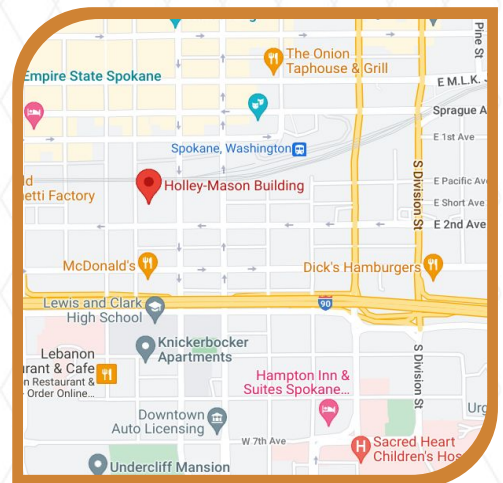
The Holley-Mason Building is an important Spokane landmark that is beautifully executed with Renaissance-inspired brick and terra cotta details.

### AMENITIES

- ✓ FREE Onsite Parking
- ✓ Detailed Craftsmanship
- ✓ 1:1000 SF (Additional space available at Market Rates)
- ✓ Centrally Located
- ✓ Secure Building
- ✓ Signage Opportunities
- ✓ High Speed Elevator
- ✓ Creative Loft Style Offices
- ✓ TI Allowance Neg

Information is deemed reliable but not guaranteed. Broker not responsible for changes errors or commissions. All square footages are for conveniences only. All information should be verified prior to leasing or purchasing property.

\*6% Co-operating Broker Fee is offered for a limited time and is based on marketed rates.



**KYHRA STRAMPE**  
509-309-8444

**CHRIS BATTEN**  
509-217-5508

info@rencorprealty.com  
509-315-2998



Zona Blanca - 1st Floor

## AVAILABLE SPACES

### 1ST FLOOR

- ✔ Suite 102 - 1,356 RSF

### 2ND FLOOR

- ✔ Full Floor Plate
- ✔ 19,867 RSF demisable to 4,600 RSF

### 3RD FLOOR

- ✔ Suite 302 & 303 - 4,355 RSF
- ✔ Demisable to 1,705 RSF
- ✔ Suite 304 - 977 RSF

### 4TH FLOOR

- ✔ Suite 406 - 3,454 RSF

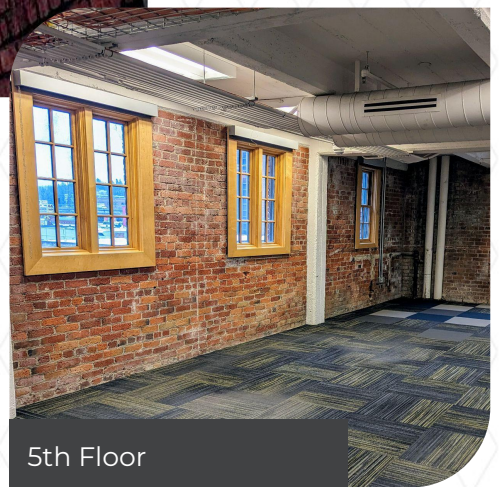
### 5TH FLOOR

- ✔ Full Floor Plate
- ✔ 18,860 RSF desmisible to 2,887 RSF

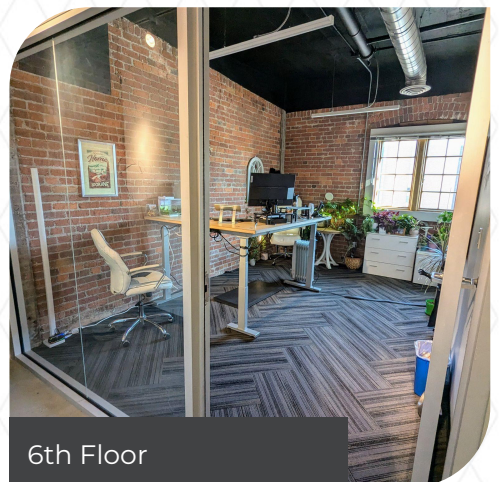
### 6TH FLOOR

- ✔ Suite 605 - 5,137 RSF
- ✔ Suite 606 - 2,554 RSF

Information is deemed reliable but not guaranteed. Broker not responsible for changes errors or commissions. All rentable square footages are estimates for conveniences only. All information should be verified prior to leasing or purchasing property.

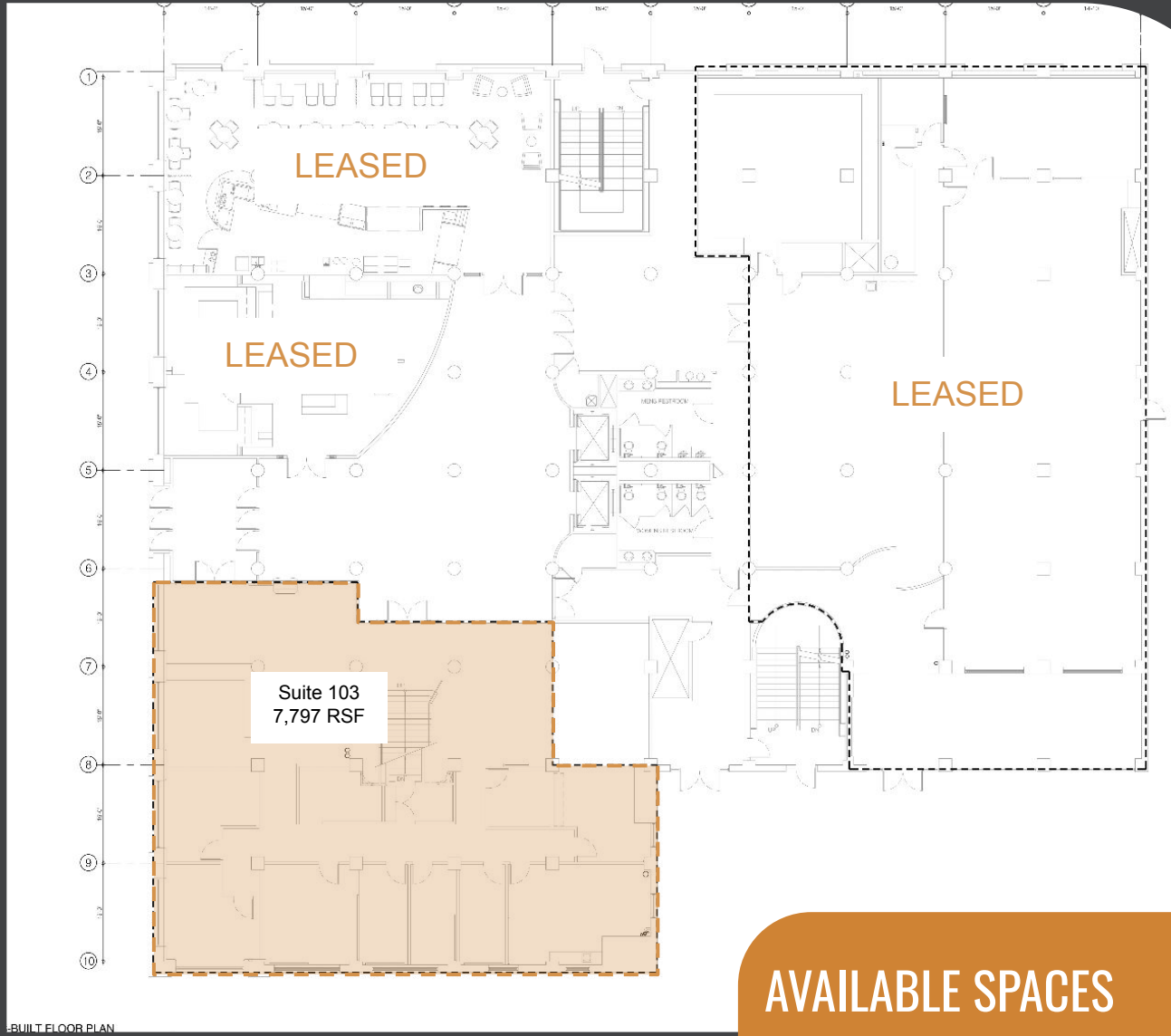


5th Floor



6th Floor

# 1ST FLOOR



## AVAILABLE SPACES

### Suite 103

- 7,797 RSF

Information is deemed reliable but not guaranteed. Broker not responsible for changes errors or commissions. All square footages are for conveniences only. All information should be verified prior to leasing or purchasing property.

# 2ND FLOOR



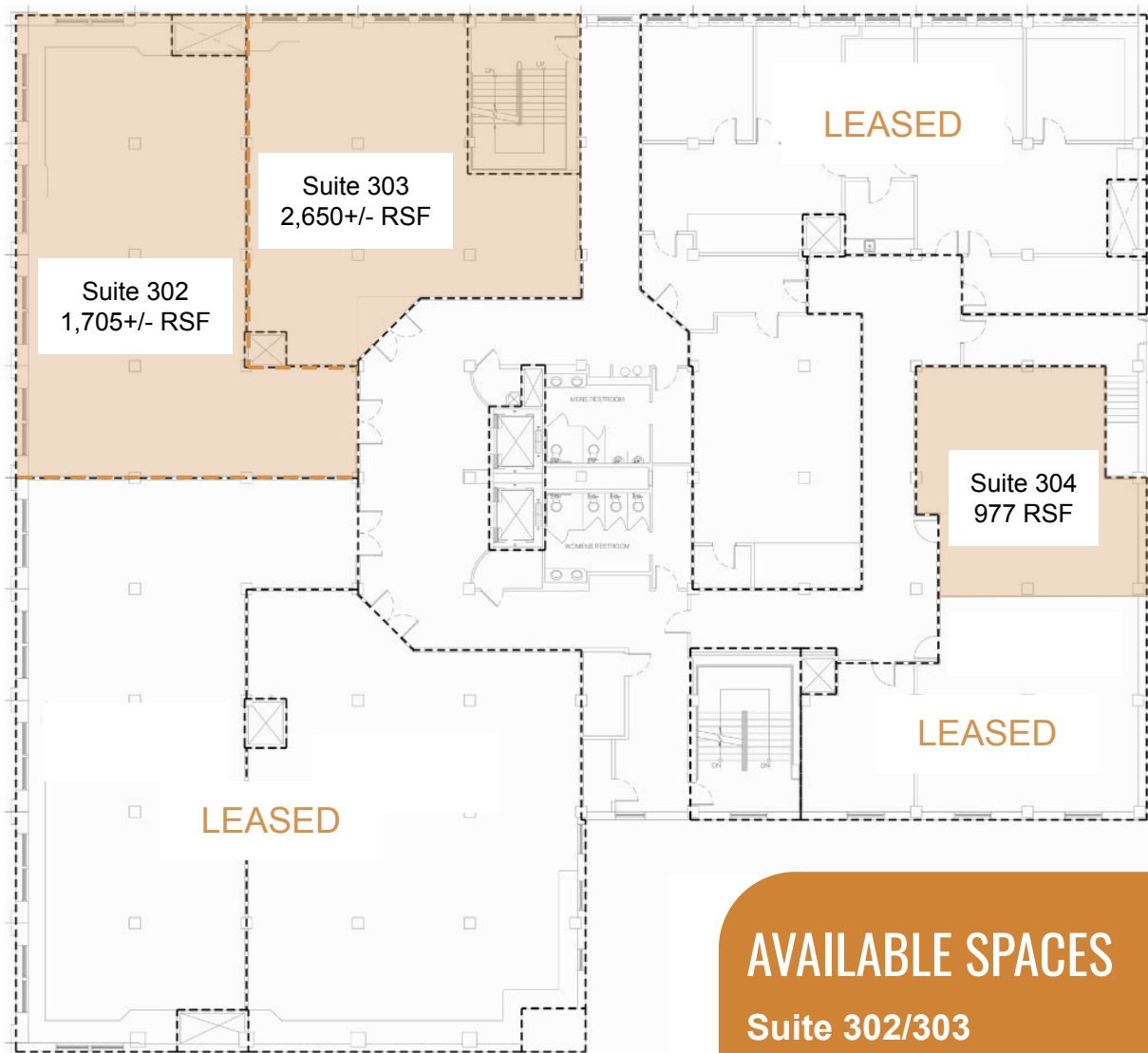
## AVAILABLE SPACES

**19,867 RSF**

- Demisable to 4,600 RSF
- Full Floor Plate
- Shell Condition
- Large Windows

Information is deemed reliable but not guaranteed. Broker not responsible for changes errors or commissions. All square footages are for conveniences only. All information should be verified prior to leasing or purchasing property.

# 3RD FLOOR



## AVAILABLE SPACES

### Suite 302/303

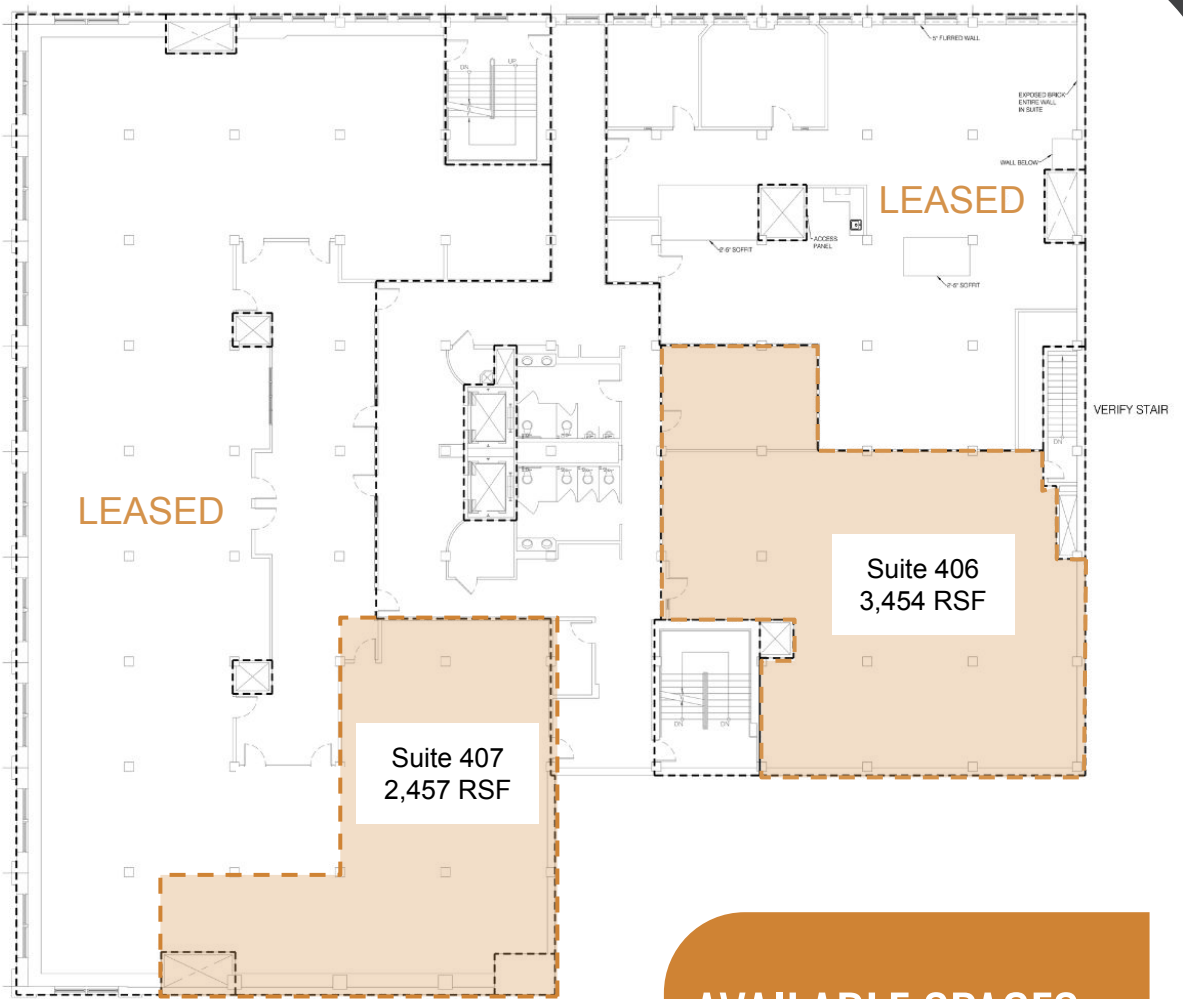
- 4,033 RSF
- Demisable to 1,705 RSF
- Shell Condition

### Suite 304

- 977 RSF
- Sink in Suite

Information is deemed reliable but not guaranteed. Broker not responsible for changes errors or commissions. All square footages are for conveniences only. All information should be verified prior to leasing or purchasing property.

# 4TH FLOOR



## AVAILABLE SPACES

### Suite 406

- 3,454 RSF

### Suite 407

- 2,457 RSF

Information is deemed reliable but not guaranteed. Broker not responsible for changes errors or commissions. All square footages are for conveniences only. All information should be verified prior to leasing or purchasing property.

# 5TH FLOOR



## AVAILABLE SPACES

### 17,943 SF

- Demisable to 2,887+/- RSF
- Former Tenant (WA Trust Bank) Built out call center

Information is deemed reliable but not guaranteed. Broker not responsible for changes errors or commissions. All square footages are for conveniences only. All information should be verified prior to leasing or purchasing property.

# 6TH FLOOR



## AVAILABLE SPACES

**Suite 604**

- 1,353 RSF

**Suite 605**

- 5,137 RSF

**Suite 606**

- 2,554 RSF

Information is deemed reliable but not guaranteed. Broker not responsible for changes errors or commissions. All square footages are for conveniences only. All information should be verified prior to leasing or purchasing property.