

22,438 SF

Industrial Space For Lease



Prologis NW Corporate Park

3583 NW Yeon Avenue - Bldg 1
Portland, OR 97210 USA

LOCATION

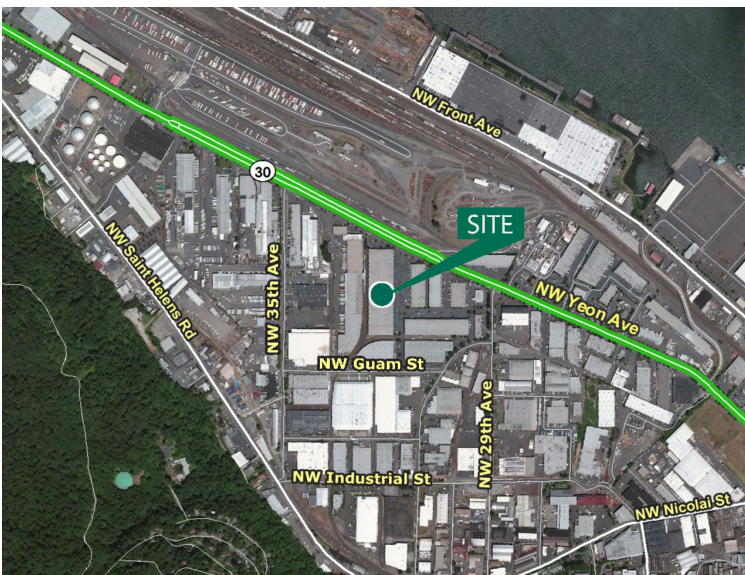
- Guilds Lake / NW Industrial Area
- Eleven (11) Buildings; 887,935 SF Park

FACILITY

- Approximately 22,438 SF with 2,802 SF Two-Story Office (1,516 SF / 1,286 SF)
- One (1) Dock-High Door with LL, One (1) Grade-Level Door
- Fully Sprinklered
- 24' Clear Height
- 800amps, 480V, 3-phase

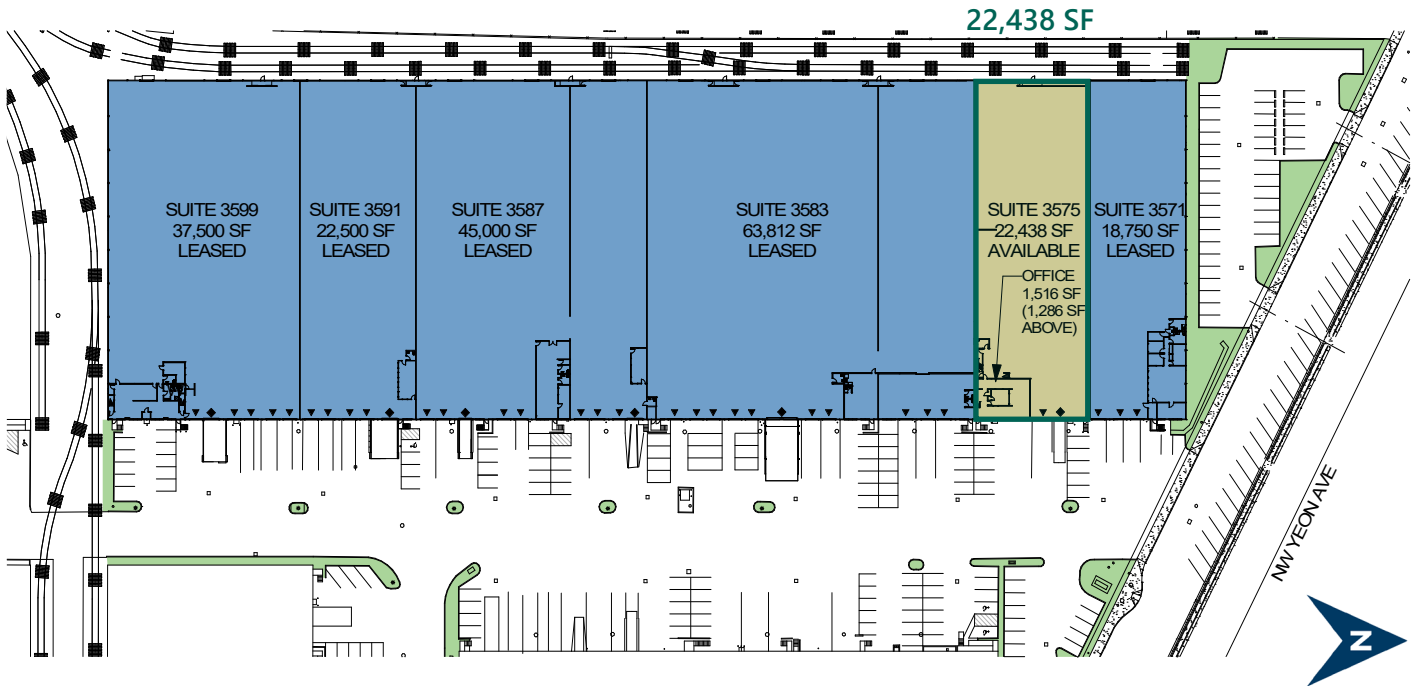
ADVANTAGES AND AMENITIES

- Close-In NW Location
- Minutes to Downtown Portland
- Immediate Access to I-405 and I-5
- Park Amenities Include Food and Convenience Services
- Please Call Brokers for Current Rates

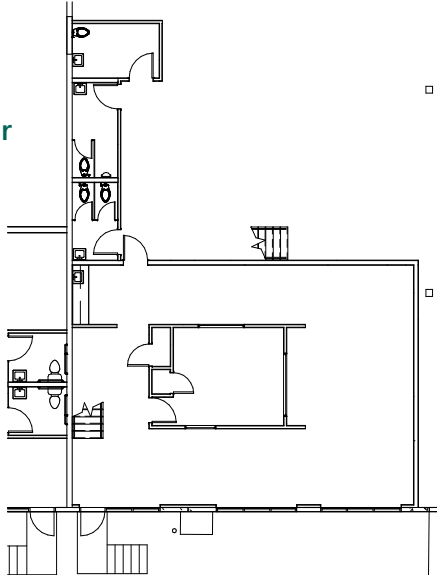


22,438 SF

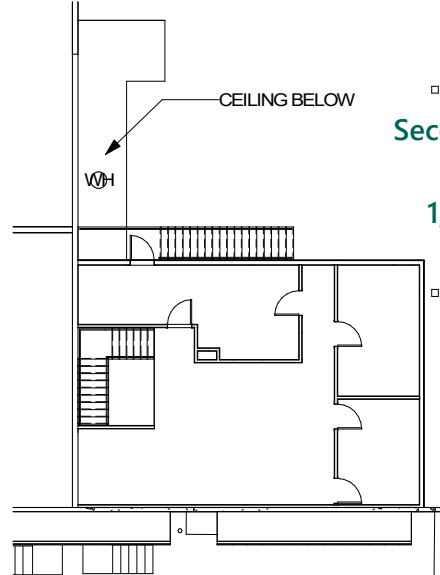
Industrial Space For Lease



Ground Floor
Office
1,516 SF



Second Floor
Office
1,286 SF



Capacity Commercial Group

Scott Kappes, SIOR
scottk@capacitycommercial.com
ph +1 503.517.9877
cell +1 503.816.4201
805 SW Broadway Street, Suite 600
Portland, OR 97205

Capacity Commercial Group

Kenny Houser, SIOR
kenny@capacitycommercial.com
ph +1 503.517.9875
cell +1 503.385.6080
805 SW Broadway Street, Suite 600
Portland, OR 97205

Prologis

Sean Colletta
scolletta@prologis.com
ph +1 503.276.7375
4380 SW Macadam Avenue, Suite 285
Portland, OR 97239