



138 South 8<sup>th</sup> Street  
Brawley, California 92227

## Historic Building

This one-story brick and block building constructed circa 1924 by Southern Sierra Power Company during their expansion to provide electrical service to the Imperial Valley.

Acquired by IID on October 18, 1943, the property has been used as a customer service office until 2003.

- Potential for historic dedication, and preservation.
- Architectural aspects include medallions, corbels and mosaic tile.
- Corner lot with both onsite, and frontage parking

## Offered for Sale

**\$245,500**

## Commercial Property

Building size: 1860 sf. gross

Lot size: 6,830 sf (0.15 acres m/l)

Year Built: 1924 (approx.)

Zoning: East Village Enterprise in  
Downtown Specific Plan

Uses: Light, office, and commercial

APN: 049-031-004-000

## Contact Us

Phone: (760) 339-9239

Email: [LJCervantes@iid.com](mailto:LJCervantes@iid.com)

Showings by appointment only.

---

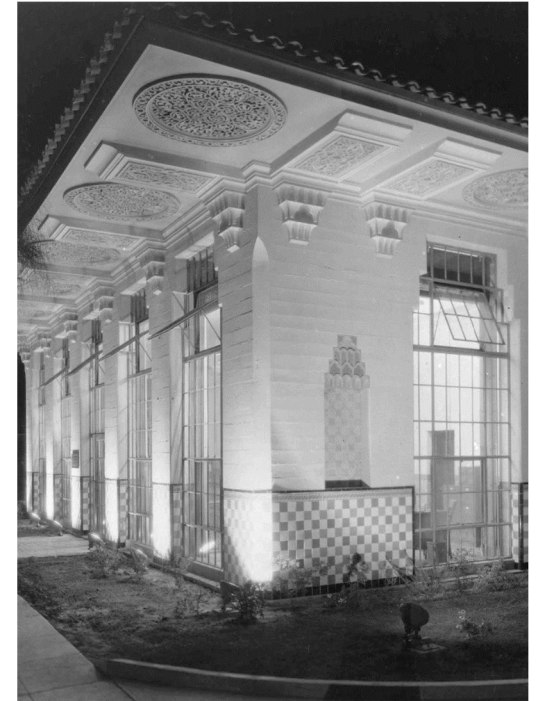
### Imperial Irrigation District

333 East Barioni Blvd

PO Box 937

Imperial, CA 92251

# FOR SALE



Imperial Irrigation District

Real Estate Section

(760) 339-9239

[www.iid.com](http://www.iid.com)

# Building Description

## Interior

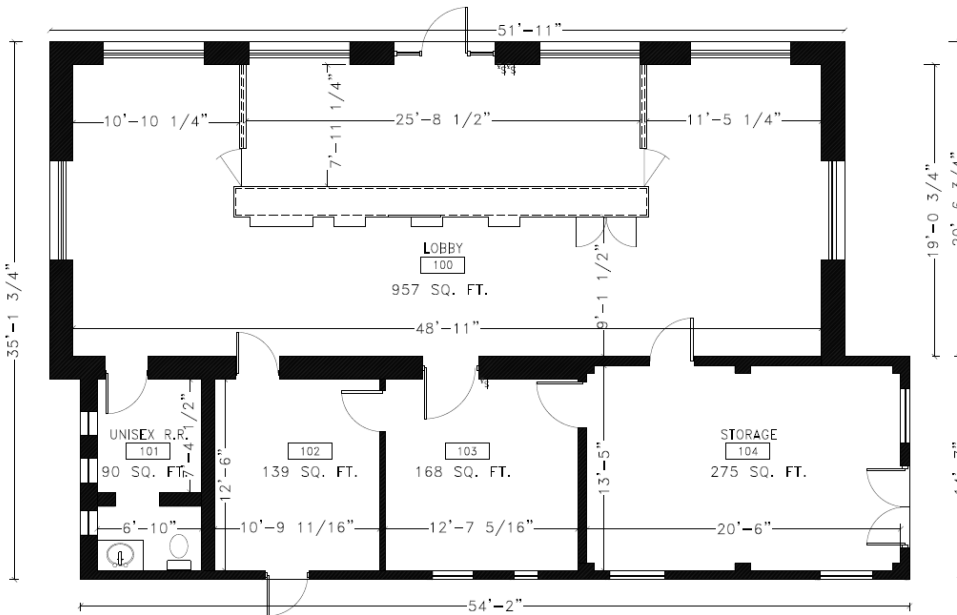
- (1) Main interior room
- (2) Smaller interior rooms
- (1) Kitchen/Breakroom
- (1) Bathroom/Locker room
- (2) HVAC units
- Tile, carpet and linoleum flooring
- Acoustic tile panels in ceiling
- Overhead fluorescent lighting

## Exterior

- Floor-to-ceiling windows on front
- Chain-link fence enclosed in rear
- Secured parking inside fenced area, and parking outside fenced area, on-street parking available.
- Mosaic tile, and other architectural elements
- Tile roof



## Interior Floor Plan



TOTAL BUILDING AREA = 1860 SQ. FT.

