

# 1641 W. ROUTE K - C-STORE FOR LEASE COLUMBIA, MO



FOR MORE INFORMATION PLEASE CONTACT

**Jack L. Maher, III**

**Broker-Officer**

Mobile (573) 489-6860

Work (573) 228-6321

FAX (815) 550-1506

Buttonwood Business Center

3610 Buttonwood Dr., Suite 200

Columbia, MO 65201

Email at [maher3@jlmproperties.com](mailto:maher3@jlmproperties.com)



## MAHER

COMMERCIAL REAL ESTATE

The information contained herein is for illustration only - dimensions are approximate only.  
This information is not to be reproduced or used for construction or permitting. The information contained within this brochure is believed to be accurate as of the date of input, however, JLM Properties, Inc., assumes no responsibility for the accuracy of the information provided.

[WWW.MAHERCRE.COM](http://WWW.MAHERCRE.COM)



# 1641 W. ROUTE K COLUMBIA, MO

## Property Features:

- Operating C-store available for lease.
- \$3,000/month plus utilities
- Gross lease structure with tenant paying for all utilities.
- 6 pumps on site with above ground tank.
- +/- 3,500 S.F. store.
- Property fronts Route K, growing residential population in south Columbia, MO. All tours must be scheduled via listing brokerage office.



FOR MORE INFORMATION PLEASE CONTACT

**Jack L. Maher, III**

**Broker-Officer**

Mobile (573) 489-6860

Work (573) 228-6321

FAX (815) 550-1506

Buttonwood Business Center

3610 Buttonwood Dr., Suite 200

Columbia, MO 65201

Email at [maher3@jlmproperties.com](mailto:maher3@jlmproperties.com)



# MAHER

COMMERCIAL REAL ESTATE

The information contained herein is for illustration only - dimensions are approximate only.  
This information is not to be reproduced or used for construction or permitting. The information contained within this brochure is believed to be accurate as of the date of input, however, JLM Properties, Inc., assumes no responsibility for the accuracy of the information provided.

[WWW.MAHERCRE.COM](http://WWW.MAHERCRE.COM)



# 1641 W. ROUTE K COLUMBIA, MO



FOR MORE INFORMATION PLEASE CONTACT

**Jack L. Maher, III**

**Broker-Officer**

Mobile (573) 489-6860

Work (573) 228-6321

FAX (815) 550-1506

Buttonwood Business Center

3610 Buttonwood Dr., Suite 200

Columbia, MO 65201

Email at [maher3@jlmproperties.com](mailto:maher3@jlmproperties.com)



## MAHER

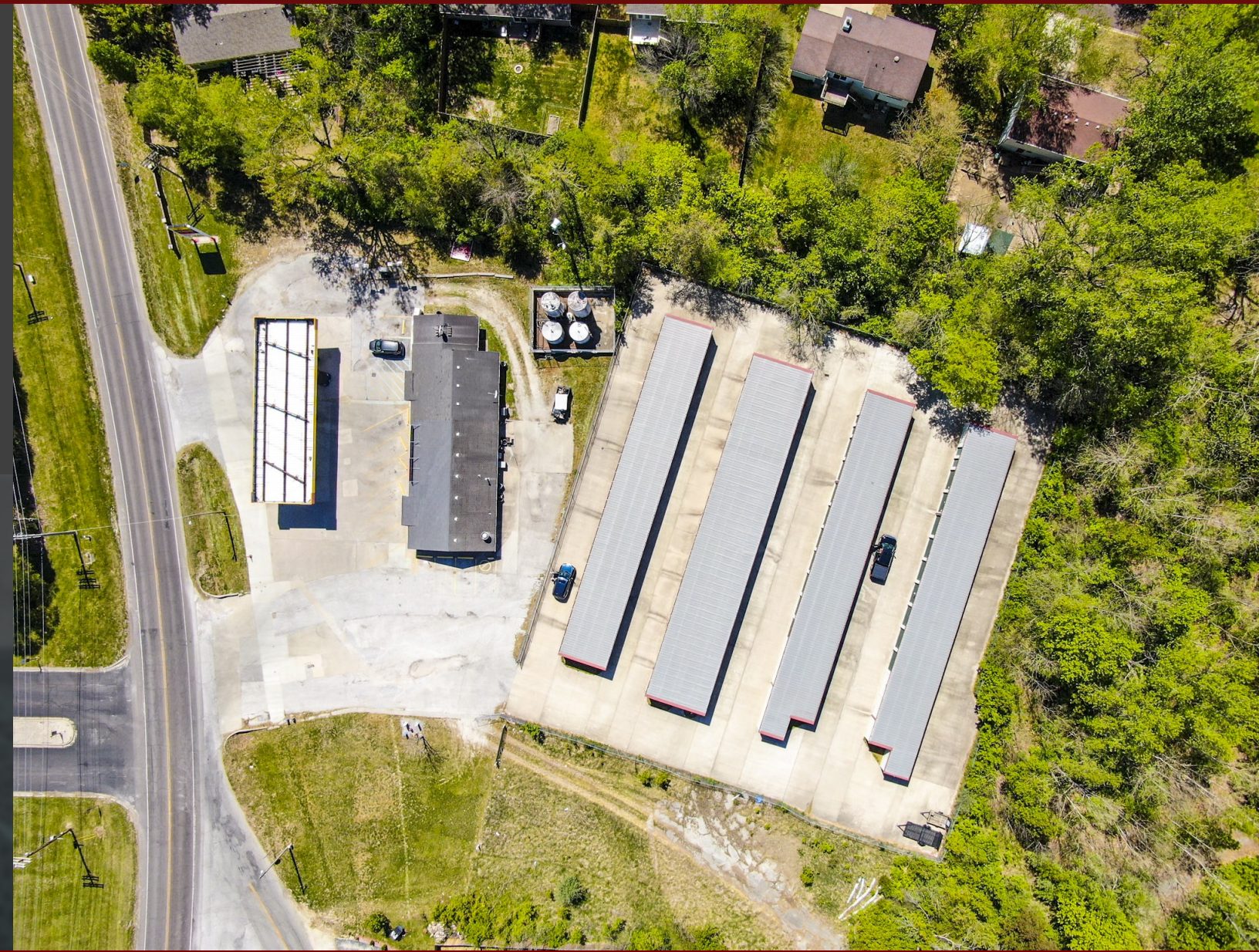
COMMERCIAL REAL ESTATE

The information contained herein is for illustration only - dimensions are approximate only.  
This information is not to be reproduced or used for construction or permitting. The information contained within this brochure is believed to be accurate as of the date of input, however, JLM Properties, Inc., assumes no responsibility for the accuracy of the information provided.

[WWW.MAHERCRE.COM](http://WWW.MAHERCRE.COM)



# 1641 W. ROUTE K COLUMBIA, MO



FOR MORE INFORMATION PLEASE CONTACT

**Jack L. Maher, III**

**Broker-Officer**

Mobile (573) 489-6860

Work (573) 228-6321

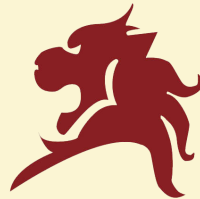
FAX (815) 550-1506

Buttonwood Business Center

3610 Buttonwood Dr., Suite 200

Columbia, MO 65201

Email at [maher3@jlmproperties.com](mailto:maher3@jlmproperties.com)



## MAHER

COMMERCIAL REAL ESTATE

The information contained herein is for illustration only - dimensions are approximate only.  
This information is not to be reproduced or used for construction or permitting. The information contained within this brochure is believed to be accurate as of the date of input, however, JLM Properties, Inc., assumes no responsibility for the accuracy of the information provided.

[WWW.MAHERCRE.COM](http://WWW.MAHERCRE.COM)



# 1641 W. ROUTE K COLUMBIA, MO



FOR MORE INFORMATION PLEASE CONTACT

**Jack L. Maher, III**

**Broker-Officer**

Mobile (573) 489-6860

Work (573) 228-6321

FAX (815) 550-1506

Buttonwood Business Center

3610 Buttonwood Dr., Suite 200

Columbia, MO 65201

Email at [maher3@jlmproperties.com](mailto:maher3@jlmproperties.com)



## MAHER

COMMERCIAL REAL ESTATE

The information contained herein is for illustration only - dimensions are approximate only.  
This information is not to be reproduced or used for construction or permitting. The information contained within this brochure is believed to be accurate as of the date of input, however, JLM Properties, Inc., assumes no responsibility for the accuracy of the information provided.

[WWW.MAHERCRE.COM](http://WWW.MAHERCRE.COM)