



THE
RANTSGROUP
COMMERCIAL REAL ESTATE

FOR LEASE

SECOND FLOOR OFFICE SPACE IN CLASS A WATERFRONT OFFICE BUILDING



724 COLUMBIA STREET NW, OLYMPIA, WA | MARKET PLACE OFFICE BUILDING

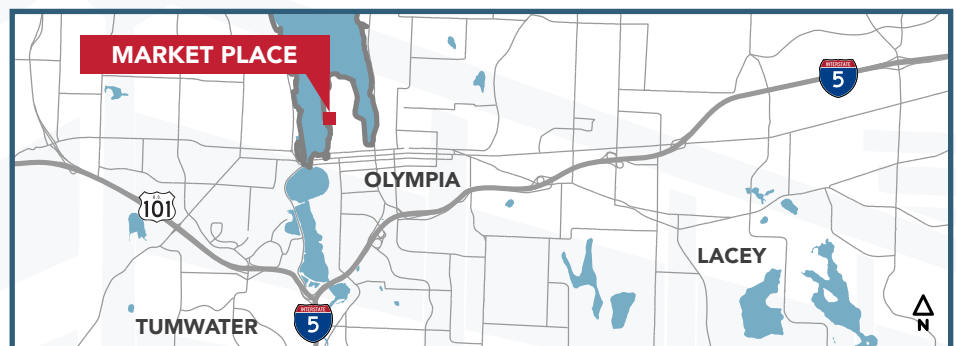
Premier waterfront office building next to Anthony's Homeport, the Olympia Farmer's Market, and the Port of Olympia. Ample parking with open, visitor, and additional free Market District parking on the capitol campus' free Dash transit line. Utilities and janitorial are included in the base rent. A large shared conference room on the 2nd floor is available by appointment. Professional on-site building management.

SUITE 200: Views of The Olympia Farmers Market and the Port of Olympia. Layout includes a reception/waiting area, work/break room, open area, and private offices.

2,069 SF

CBA# 43006589

\$28.50/SF, MODIFIED GROSS



This information, while obtained from sources we deem reliable, is not guaranteed. It is provided without any representation, warranty or guarantee, expressed or implied as to its accuracy. Prospective buyer or tenant should conduct an independent investigation and verification of all matters deemed to be material, including, but not limited to, statements of income and expenses. Consult your attorney, accountant, or other professional advisor.

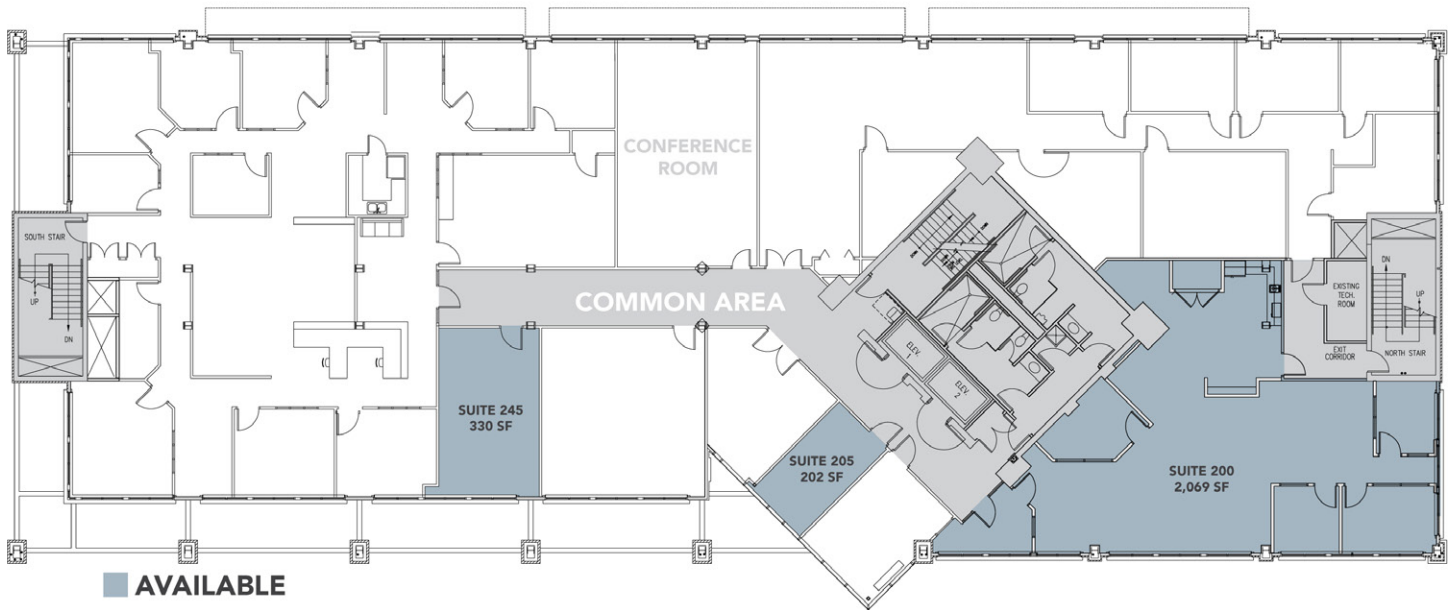


Carolyn Graden, CCIM
MANAGING BROKER
(360) 763-4994
carolyn@rantsgroup.com

360-943-8060
RANTSGROUP.com

724 COLUMBIA STREET NW, OLYMPIA, WA | MARKET PLACE OFFICE BUILDING

SECOND FLOOR



THIS FLOORPLAN IS NOT TO SCALE
SIZES AND DIMENSIONS ARE APPROXIMATE, ACTUAL MAY VARY.



CONTACT

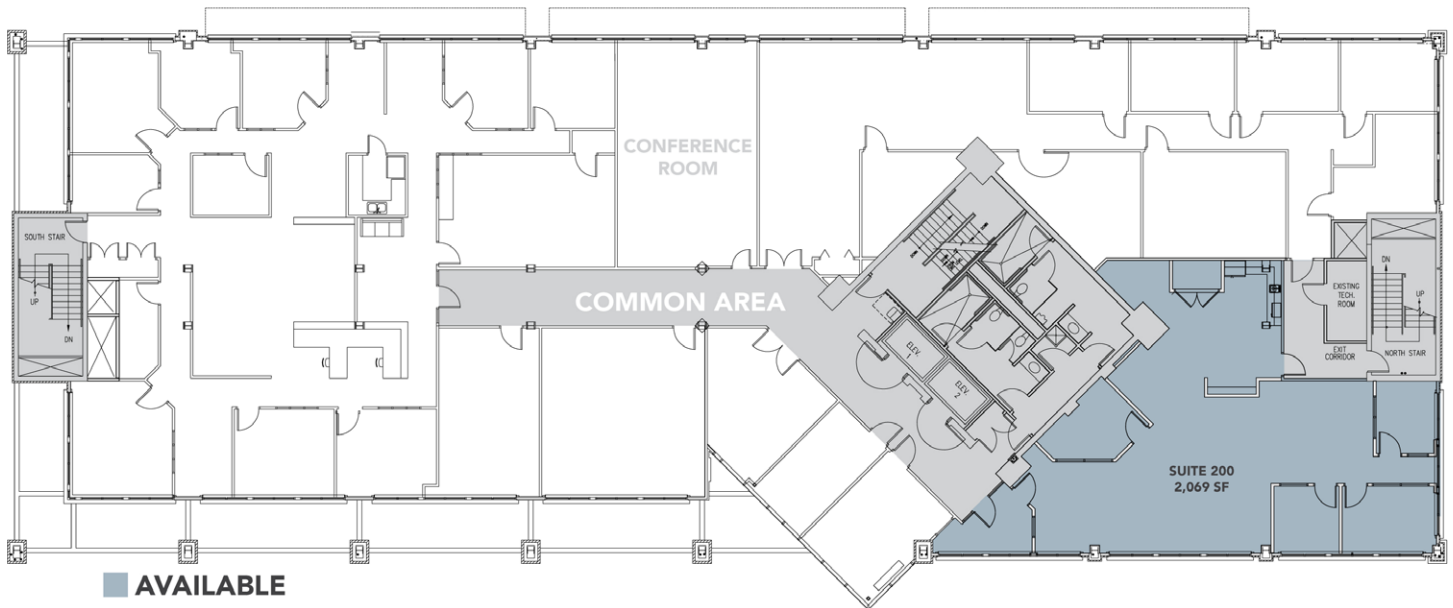
Carolyn Graden, CCIM
MANAGING BROKER
(360) 763-4994
carolyn@rantsgroup.com

This information, while obtained from sources we deem reliable, is not guaranteed. It is provided without any representation, warranty or guarantee, expressed or implied as to its accuracy. Prospective buyer or tenant should conduct an independent investigation and verification of all matters deemed to be material, including, but not limited to, statements of income and expenses. Consult your attorney, accountant, or other professional advisor.

360-943-8060 | RANTSGROUP.com

724 COLUMBIA STREET NW, OLYMPIA, WA | MARKET PLACE OFFICE BUILDING

SUITE 200: 2,069 SF | \$28.50/SF, MODIFIED GROSS



THIS FLOORPLAN IS NOT TO SCALE
SIZES AND DIMENSIONS ARE APPROXIMATE, ACTUAL MAY VARY.



CONTACT

Carolyn Graden, CCIM
MANAGING BROKER
(360) 763-4994
carolyn@rantsgroup.com

This information, while obtained from sources we deem reliable, is not guaranteed. It is provided without any representation, warranty or guarantee, expressed or implied as to its accuracy. Prospective buyer or tenant should conduct an independent investigation and verification of all matters deemed to be material, including, but not limited to, statements of income and expenses. Consult your attorney, accountant, or other professional advisor.

360-943-8060 | RANTSGROUP.com