

3464

DURAHART

Riverside, CA 92507

10,000 SF SUBLEASE

Quality Warehouse | Gated Yard | Truck Well | 2,500 SF Office Space

NEWMARK

HIGHLIGHTS

Address: 3464 Durahart Street
Riverside, CA 92507

Premises: 10,000 SF Warehouse Space with
2,500 SF of Functional Office Space

Sublease Term: Through February 28, 2027

Available: 60 Days

Asking Rate: \$1.45 IG

Parking 14 Spaces plus Yard Parking

WH Clearance: 20'

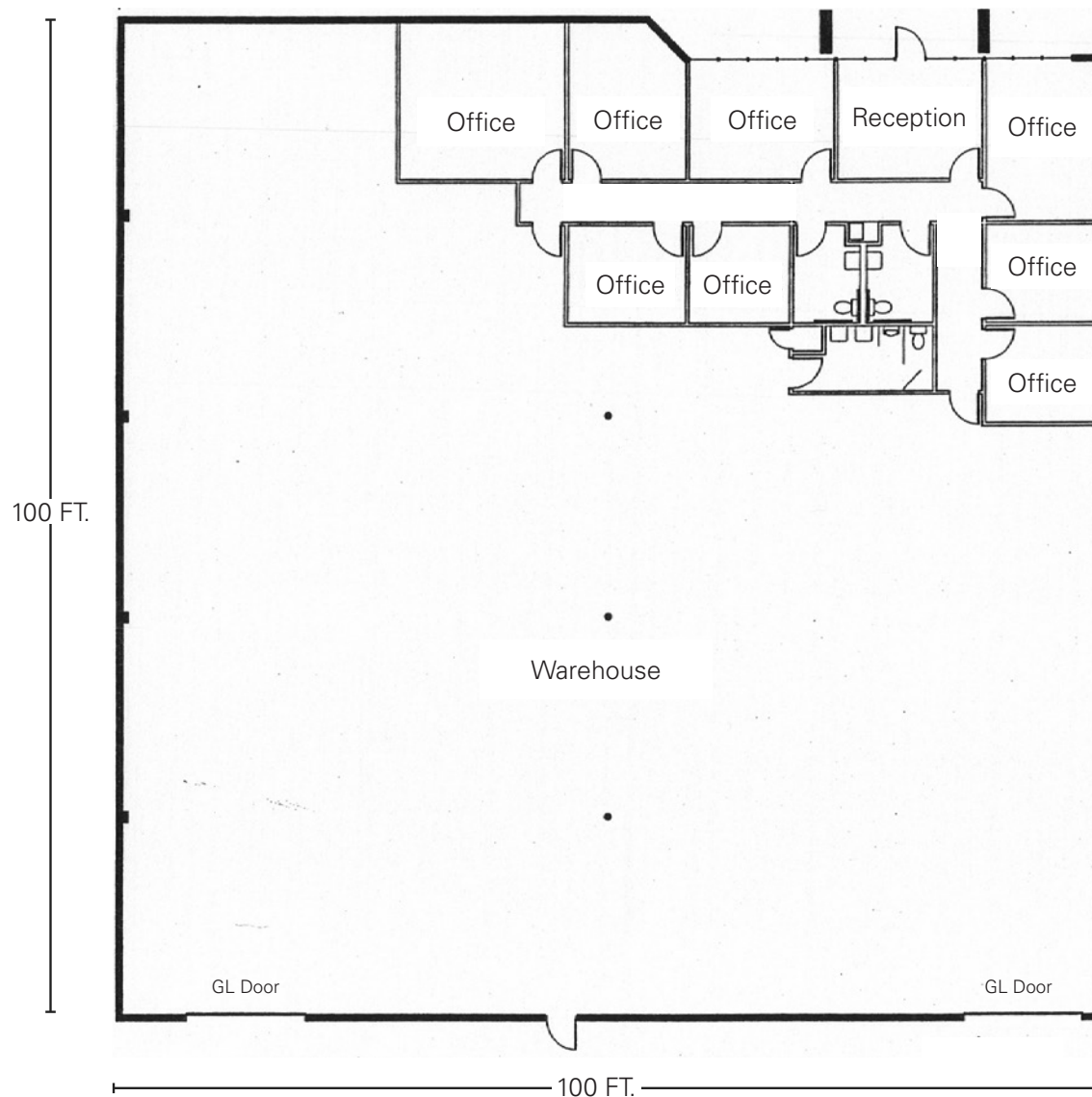
Yard Area: Large Gated/Private Yard Area

Loading: 2 Grade Level Loading Doors
plus 1 Exterior Truck Well



FLOOR PLAN

10,000 SF



Yard Area + Truck Well

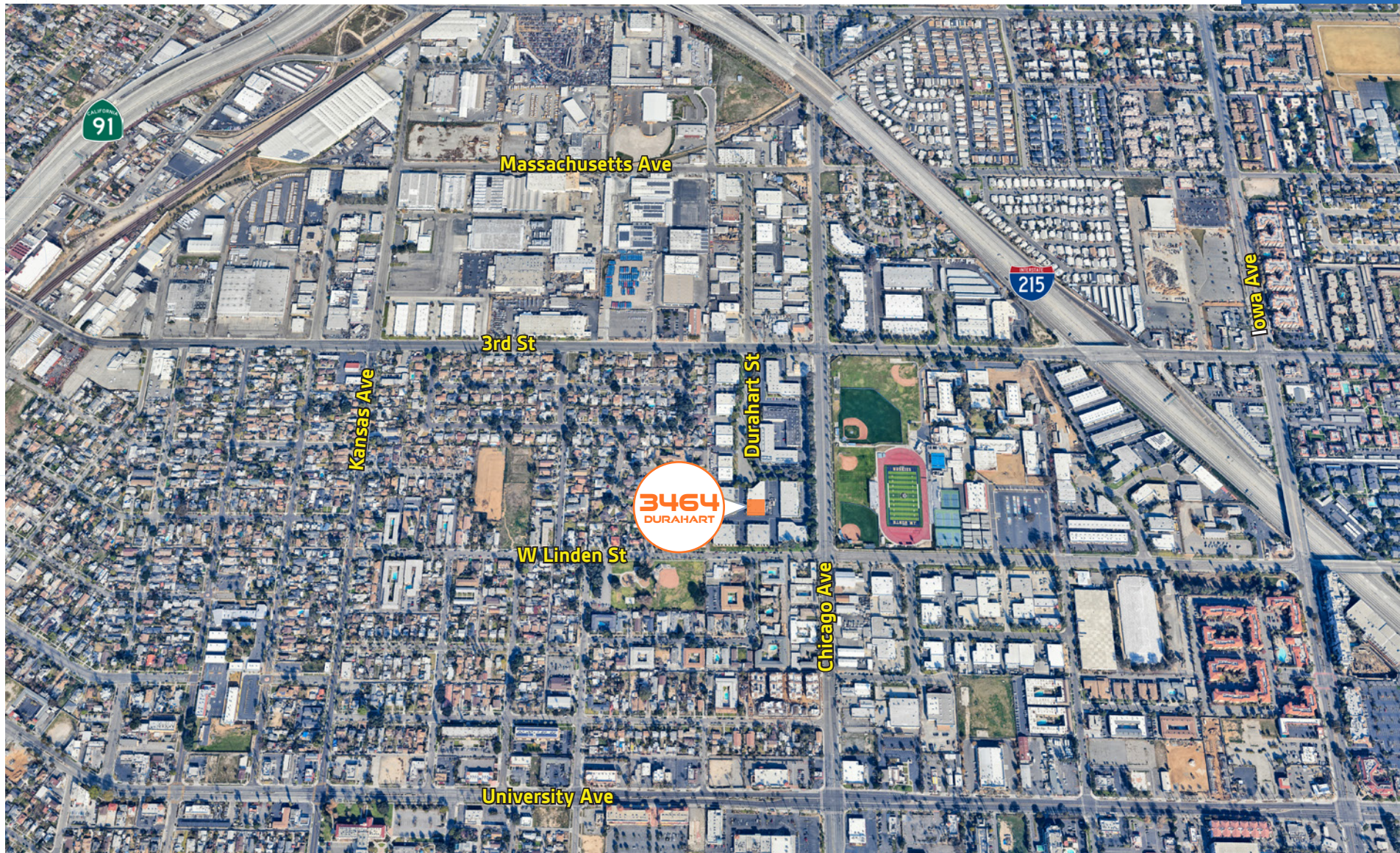
3464
DURAHART
Riverside, CA 92507



3464 DURAHART STREET, RIVERSIDE, CA

QUALITY WAREHOUSE | FOR SUBLEASE

3464 Durahart Street's vicinity is home to various warehouses, distribution centers, and manufacturing facilities, benefiting from the close proximity to major transportation routes. While predominantly an industrial area, it is a short drive to downtown Riverside, where you can find a variety of restaurants, retail shopping, and cultural sites, such as the Mission Inn Hotel & Spa and the Riverside Art Museum.



3464

DURAHART

Riverside, CA 92507



Jack McNutt
Executive Managing Director
t 949-608-2009
jack.mcnutt@nmrk.com
CA RE Lic. #00933567

CORPORATE LICENSE #01355491

The distributor of this communication is performing acts for which a real estate license is required. The information contained herein has been obtained from sources deemed reliable but has not been verified and no guarantee, warranty or representation, either express or implied, is made with respect to such information. Terms of sale or lease and availability are subject to change or withdrawal without notice.

NEWMARK