

Boulder Office Spaces For Sublease

2805 WILDERNESS PL | BOULDER, CO 80301

Suite 100

Size: 1,945 SF
(Combine with Suite 200 for 3,445 SF)
Rate: \$18.00 NNN (\$10.60)
Available Date: Immediately
Current term date ends 10/31/26

Suite 200

Size: 1,500 SF
(Combine with Suite 100 for 3,445 SF)
Rate: \$18.00 NNN (\$10.60)
Available Date: Immediately
Current term date ends 10/31/26

FORM & FUNCTION

These thoughtfully curated offices, originally built out by an interior design group, blend form and function effortlessly. Private offices with big, bright windows? Check. Open workspace for collaboration? Absolutely. Professionally designed kitchen? Come see for yourself. Lease one suite or combine the two and use Suite 200 for your board room and full kitchen break room. With double doors for easy loading and an atmosphere that just works, this space is move-in ready and undeniably polished.

PROPERTY HIGHLIGHTS

- Professionally designed, updated finishes
- Ideal layout: single private offices with windows, open space, storage, full kitchen, board room
- Double doors for loading
- Kitchenette/break area



Suite 100



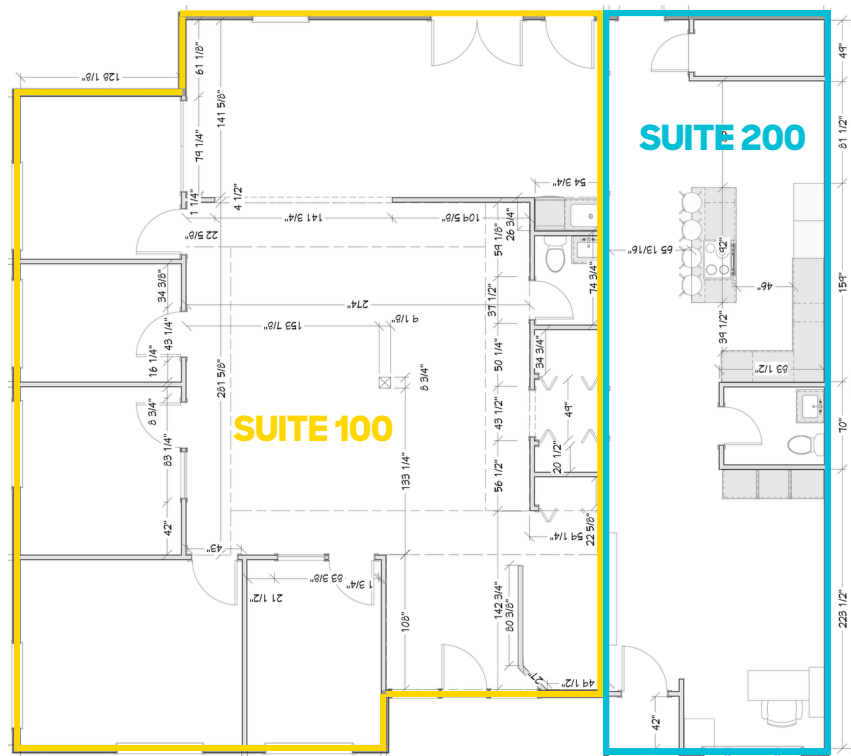
Suite 200



Suite 200



LEARN MORE ABOUT THIS PROPERTY
MarketRealEstate.com



LEARN MORE ABOUT THIS PROPERTY
MarketRealEstate.com

ANNIE LARNER

303 444 1344 Annie@MarketRealEstate.com

