

ACOMA BUSINESS CENTER • SCOTTSDALE AIRPARK  
**OFFICE/WAREHOUSE FOR LEASE ±7,482 SF**

7812 E ACOMA DRIVE • SUITE 1 • SCOTTSDALE ARIZONA 85260

**100%  
HVAC**

**TWO-STORY SUITE WITH CONTEMPORARY FINISHES • PRIME LOCATION!**

**FIRST FLOOR | ±4,566 SF:**

- Reception
- Conference room
- Three (3) offices
- Kitchen/break room
- Two (2) restrooms, each with 2 stalls
- 100% HVAC warehouse
- Fiber available

**SECOND FLOOR | ±2,916 SF:**

- Large open flex space
- Three (3) offices
- Break area

**For additional information please contact**



**John Quatrini**  
Associate Broker  
C 602.859.0506  
john@shellcommercial.com

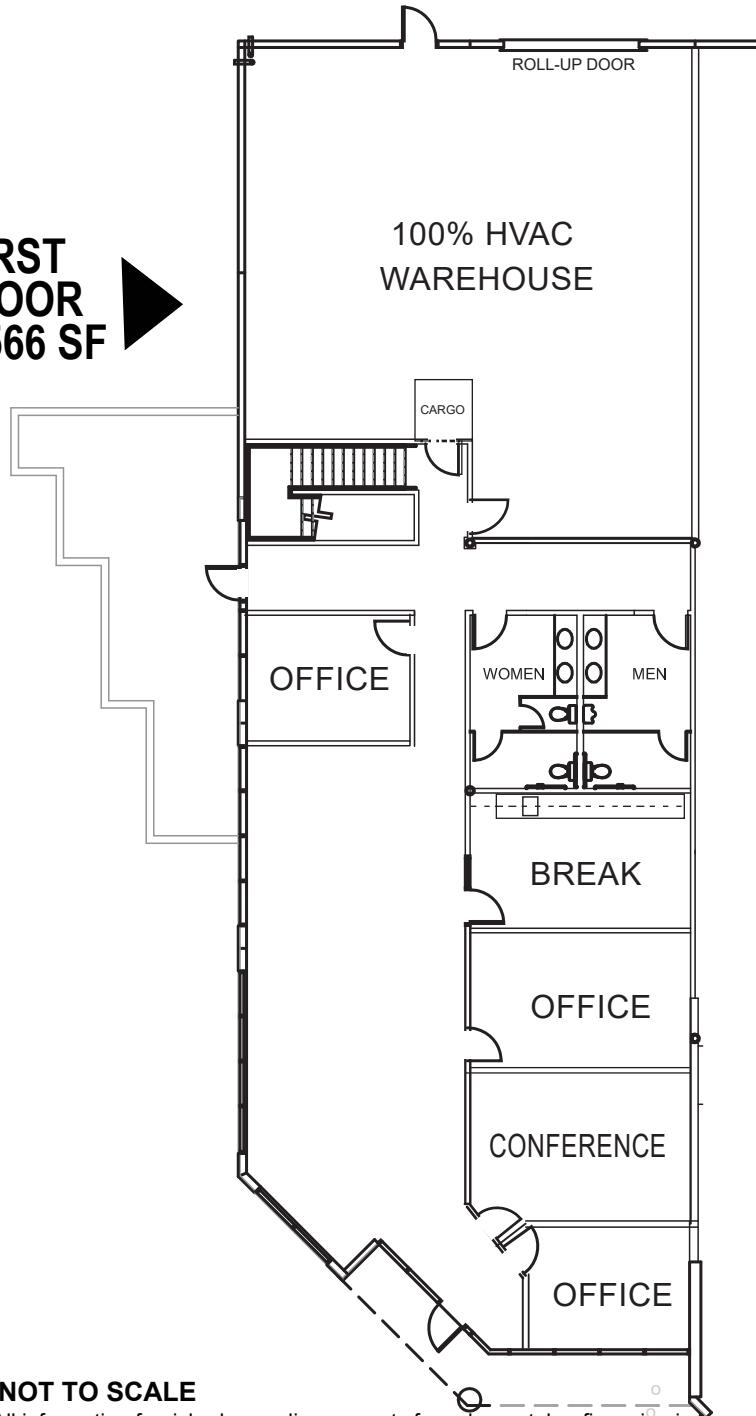


**Suzanne Enright**  
Senior Associate  
C 602.471.2981  
suzanne@shellcommercial.com



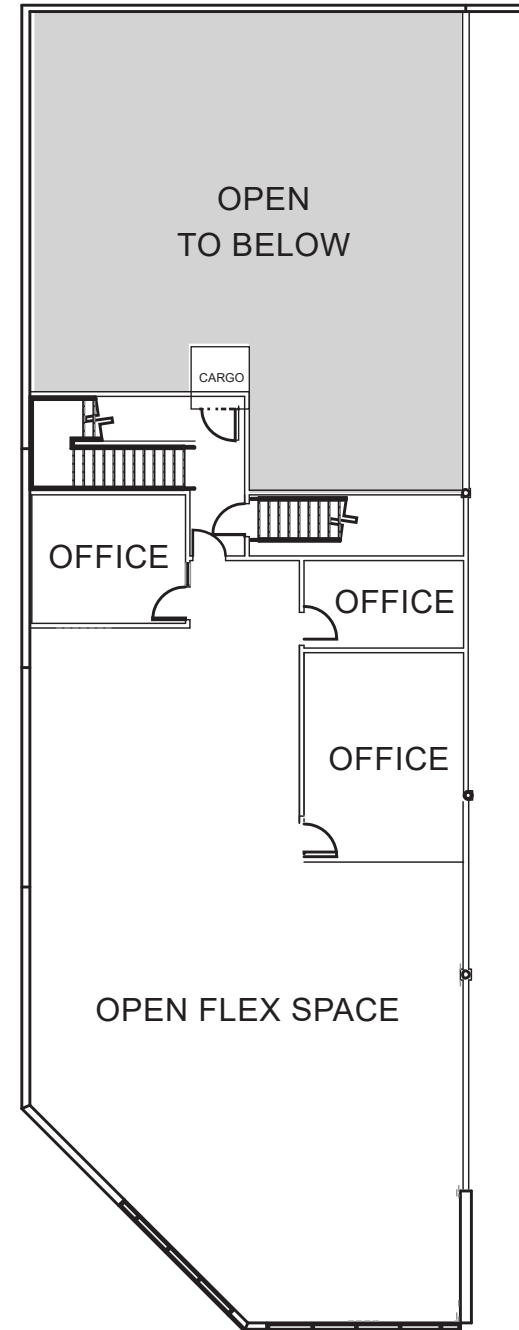
**O 480 443 3992 16410 N 91st Street  
Suite 112 Scottsdale, AZ 85260  
www.shellcommercial.com**

**FIRST FLOOR**  
**±4,566 SF** ▶



**FLOOR PLAN**  
**±7,482 SF**

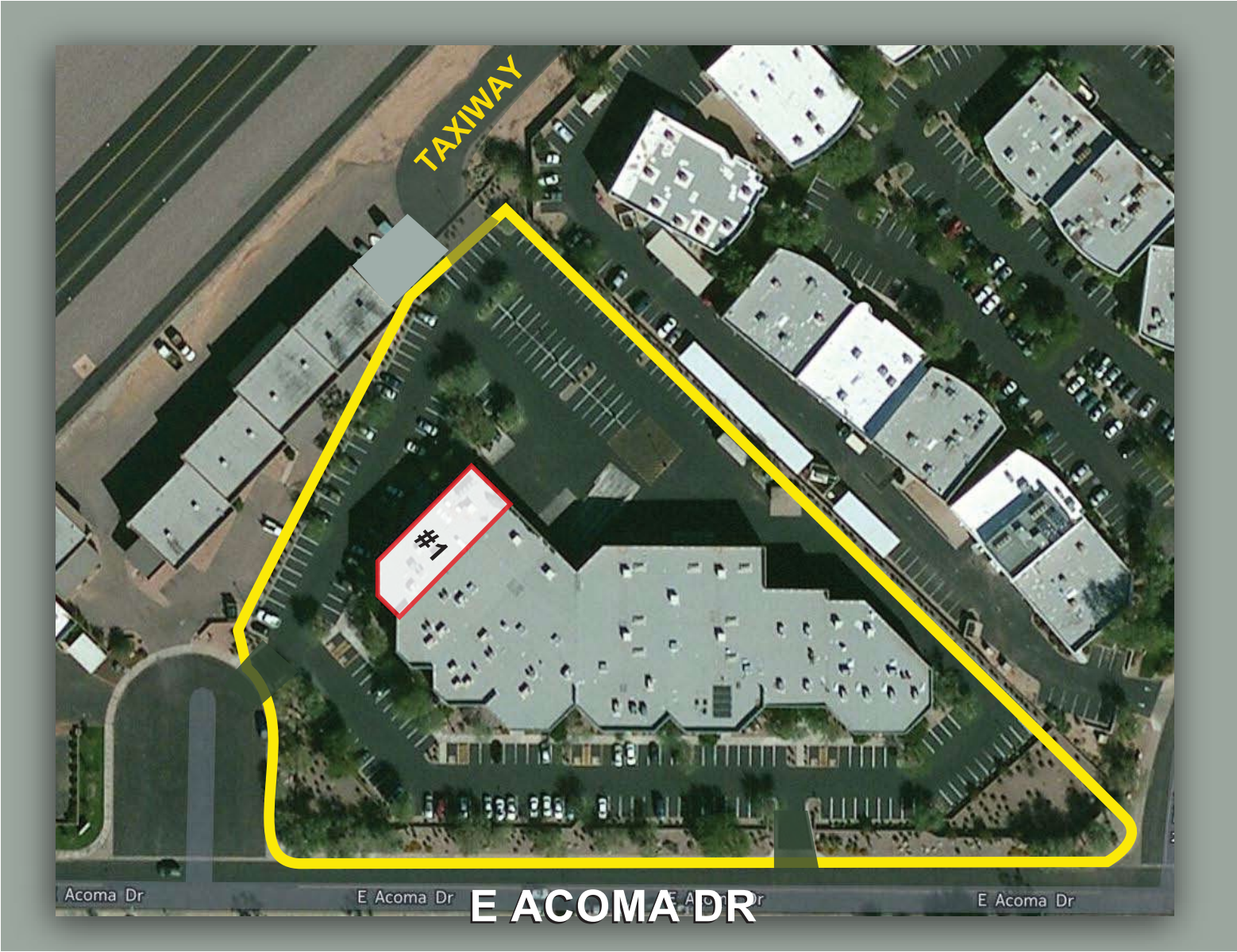
**SECOND FLOOR**  
**±2,916 SF** ▶



**NOT TO SCALE**

All information furnished regarding property for sale, rental or financing is from sources deemed reliable, but no warranty or representation is made to the accuracy thereof and same is submitted to errors, omissions, change of price, rental or other conditions, prior to sale, lease or financing or withdrawal without notice. No liability of any kind is to be imposed on the broker herein. has been secured from sources deemed reliable, however, we make no warranties as to its accuracy.

AERIAL



The above is subject to prior sales and leasing. This information has been secured from sources we believe to be reliable, but we make no representation or warranties, expressed or implied as to the accuracy of this information.

# LOCATION MAP



**SUBJECT**

The above is subject to prior sales and leasing. This information has been secured from sources we believe to be reliable, but we make no representation or warranties, expressed or implied as to the accuracy of this information.