

220 S. LARCH STREET

**AVAILABLE SPACE
FOR LEASE
3,864 SF**





PROPERTY INFO

- 3,864 Square Feet of available space
- Open light industrial/warehouse space
- Overhead garage door
- Ample onsite parking
- Prominent street signage available
- Easy access to I-496
- Directly across from the gamechanger BLOCK600
 - Capital City Market by Meijer
 - Courtyard by Marriott hotel
- Surrounded by 15+ bars and restaurants
- Footsteps away from Jackson Field, Lansing River Trail and Lansing Center
- Close proximity to the Michigan State Capitol: 0.5 miles

RENTAL RATE

- As Is Delivery - \$5,500/month

CONTACT

Mitch Stoakes

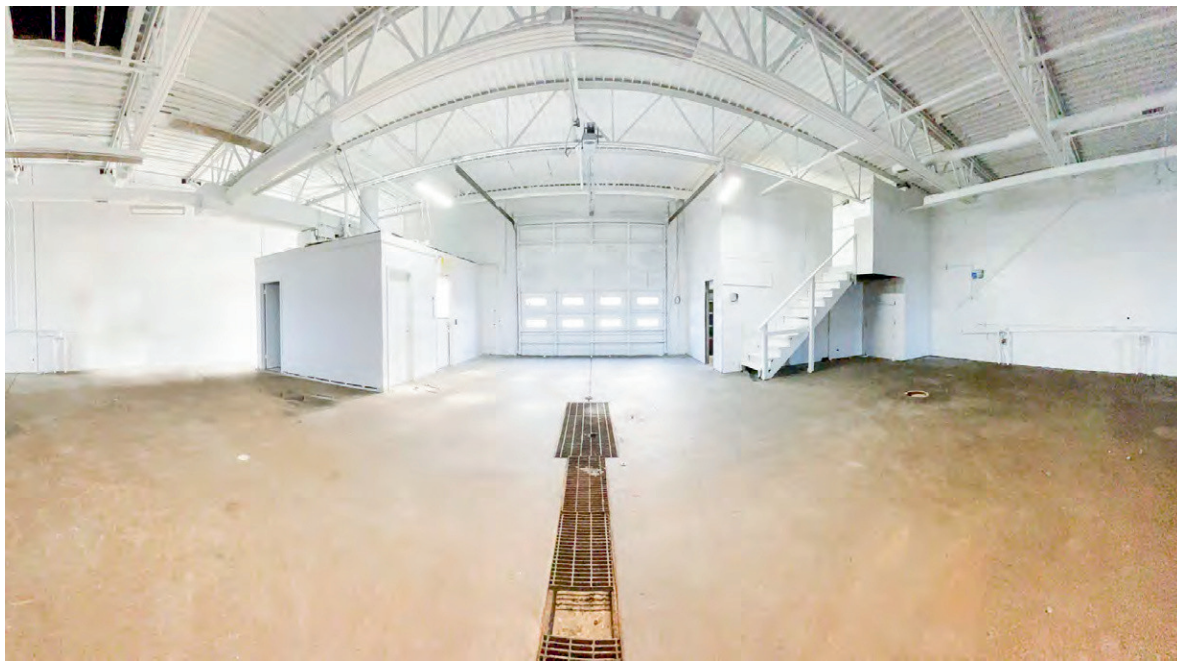
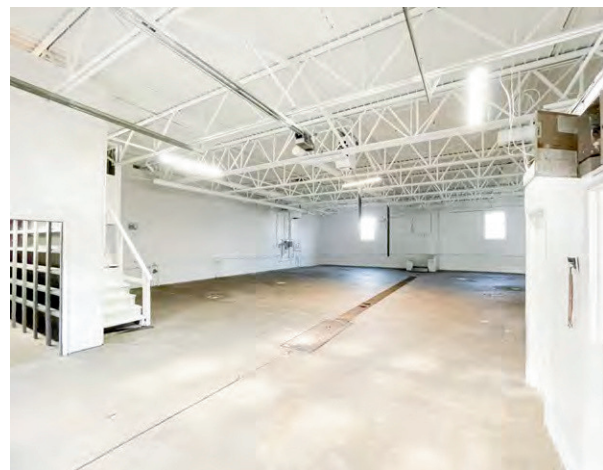
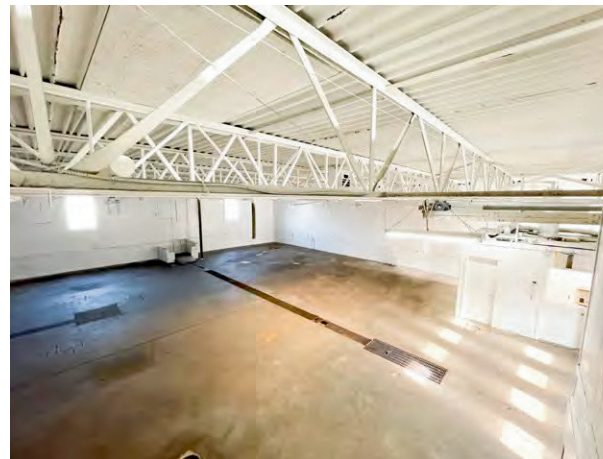
Sales Associate

(517)897-1352

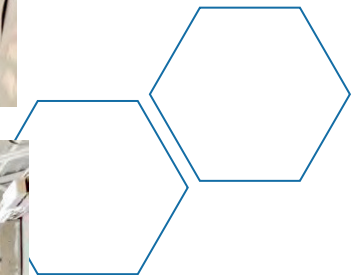
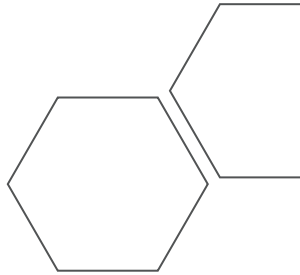
Mitch@woodworthcommercial.com

JOIN THE GROWTH AND ENERGY OF
THE THRIVING STADIUM DISTRICT TODAY!





INTERIOR PHOTOS



CONTACT

CONTACT

Mitch Stoakes

Sales Associate

(517)897-1352

Mitch@woodworthcommercial.com