

# Royersford Commons

End Cap with Outdoor Patio - Up to 3,249 SF Available

616 & 618 Main Street  
Royersford, PA 19468



## Property Information

- + Prime visibility at the intersection of Main Street (Approximately 20,000+ VPD) and S. 6th Avenue
- + New mixed-use development featuring 78 luxury apartment units over ground-floor retail and restaurant space
- + 3,249 square foot end cap space dedicated outdoor patio seating – ideal for restaurant or QSR users
- + Ample on-site parking with over 145 newly constructed spaces for residents and customers
- + Located in the Spring-Ford Area School District, with over 8,000 students from elementary through high school
- + Conveniently located 0.5 miles west of Route 422 (80,000 ADT), offering easy access to Pottstown, King of Prussia, and the suburbs of Philadelphia
- + Proposed delivery: Q4 2025

## Contact Us

### Anto Keshgegian

Associate  
+1 484 832 9041  
anto.keshgegian@cbre.com  
Licensed: PA

### Jim Creed

Senior Vice President  
+1 484 567 2801  
james.creed@cbre.com  
Licensed: PA, NJ, DE



## Royersford Commons

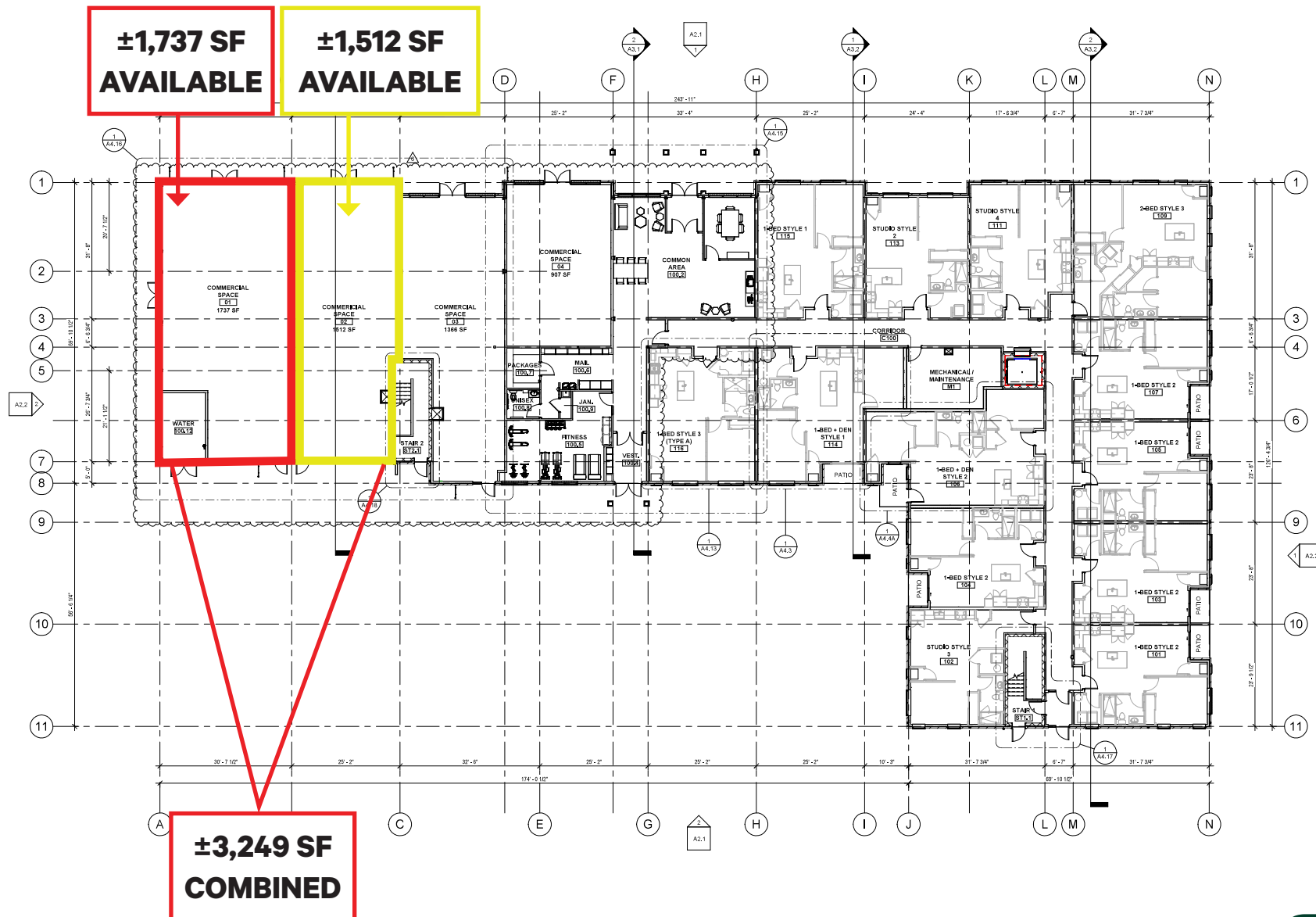
616 & 618 Main Street | Royersford, PA 19468

For Lease

# Exterior Photos



# Floor Plan





# Market Aerial

