

For Sale/Build to Suit  
Up to 13.4 Acres



## 3000 Lesh Street NE Canton, Ohio 44705

SALE PRICE	\$50,000/Acre
PARCELS	8400023, 8400024, 8400025 5215055, 5215056
ACRES	up to 13.4 Acres
ZONING	PLA-B2 & CC-I1
FRONTAGE	866' on Lesh Road 826' on Columbus Rd
DIVISIBLE	YES

**Dan Spring, SIOR**

P 330 497 6249  
dan@naispring.com

**Kelly Sober, CCIM**

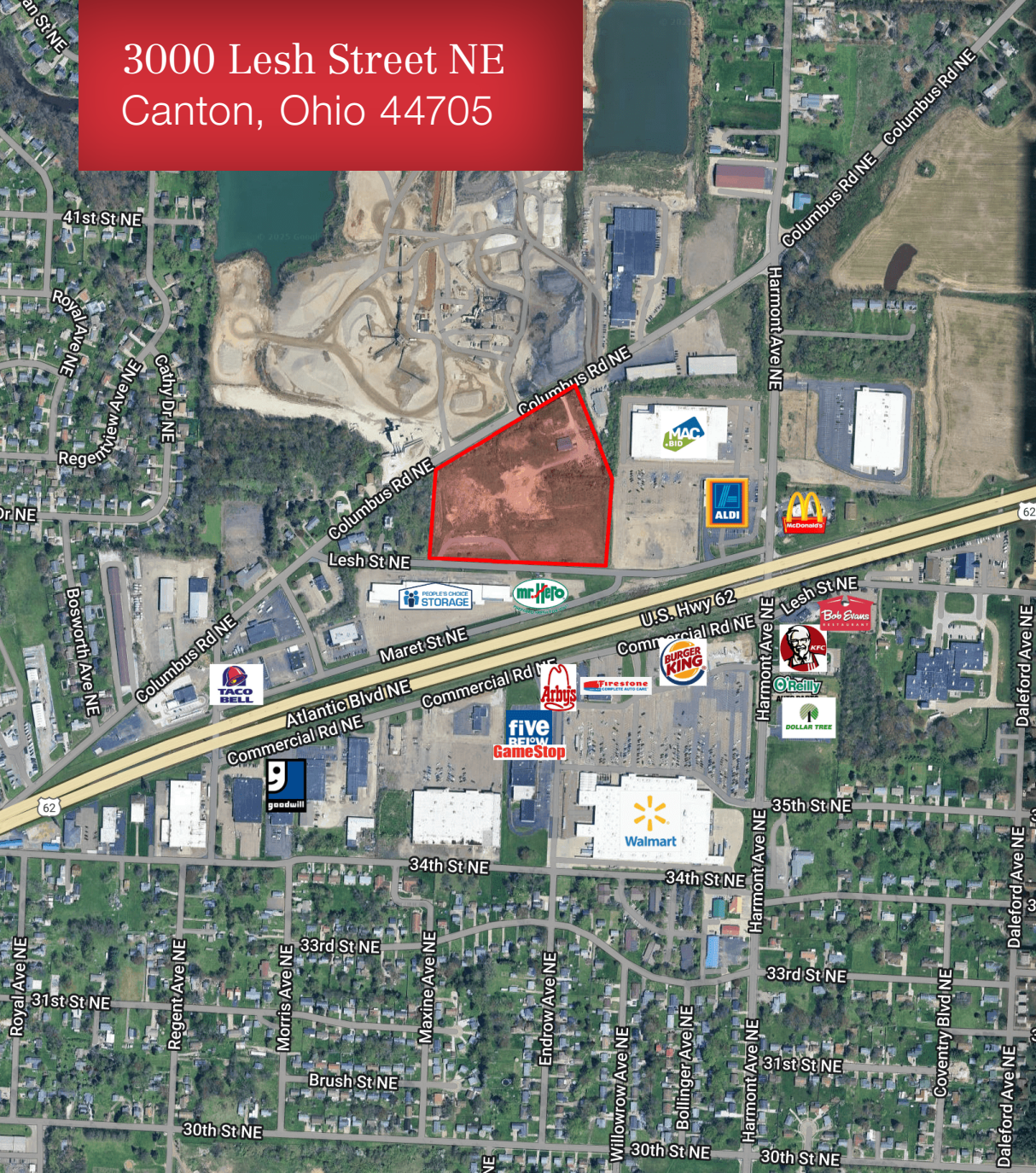
P 330 497 9837  
kelly@naispring.com

NO WARRANTY OR REPRESENTATION, EXPRESS OR IMPLIED, IS MADE AS TO THE ACCURACY OF THE INFORMATION CONTAINED HEREIN, AND THE SAME IS SUBMITTED SUBJECT TO ERRORS, OMISSIONS, CHANGE OF PRICE, RENTAL OR OTHER CONDITIONS, PRIOR SALE, LEASE OR FINANCING, OR WITHDRAWAL WITHOUT NOTICE, AND OF ANY SPECIAL LISTING CONDITIONS IMPOSED BY OUR PRINCIPALS NO WARRANTIES OR REPRESENTATIONS ARE MADE AS TO THE CONDITION OF THE PROPERTY OR ANY HAZARDS CONTAINED THEREIN ARE ANY TO BE IMPLIED.

8234 Pittsburg Ave NW  
North Canton, OH 44720  
+1 330 966 8800  
naispring.com.com



3000 Lesh Street NE  
Canton, Ohio 44705



## Additional Information

- Up to 13.4 Acres, property can be split.
- Fronts on both Lesh Street NE and Columbus Rd NE.
- Great visibility to Route 62.



NO WARRANTY OR REPRESENTATION, EXPRESS OR IMPLIED, IS MADE AS TO THE ACCURACY OF THE INFORMATION CONTAINED HEREIN, AND THE SAME IS SUBMITTED SUBJECT TO ERRORS, OMISSIONS, CHANGE OF PRICE, RENTAL OR OTHER CONDITIONS, PRIOR SALE, LEASE OR FINANCING, OR WITHDRAWAL WITHOUT NOTICE, AND OF ANY SPECIAL LISTING CONDITIONS IMPOSED BY OUR PRINCIPALS NO WARRANTIES OR REPRESENTATIONS ARE MADE AS TO THE CONDITION OF THE PROPERTY OR ANY HAZARDS CONTAINED THEREIN ARE ANY TO BE IMPLIED.

8234 Pittsburg Ave NW  
North Canton, OH 44720  
+1 330 966 8800  
[naispring.com.com](http://naispring.com.com)