



AME TELGE *BUSINESS PARK*

Tomball, Texas | Northwest Harris County

±5,000 SF - ±24,000 SF OF SPEC WAREHOUSE SPACE AVAILABLE FOR SALE OR LEASE



Business Park Details



October 2024 Occupancy

BUILDING A

- 5,000 SF
- 22' eaves
- Two 14' x 16' OH Doors
- Canopy over storefront
- 14' x 16' overhead doors
- 200-amp power / 3 phase
- 4 windows (2-street; 2-court)
- 4' wainscoting on street side and store front

BUILDING B

- 6,250 SF
- 22' eaves
- Two 14' x 16' OH Doors
- Canopy over storefront
- 14' x 16' overhead doors
- 200-amp power / 3 phase
- 4 windows (2-street; 2-court)
- 4' wainscoting on street side and store front

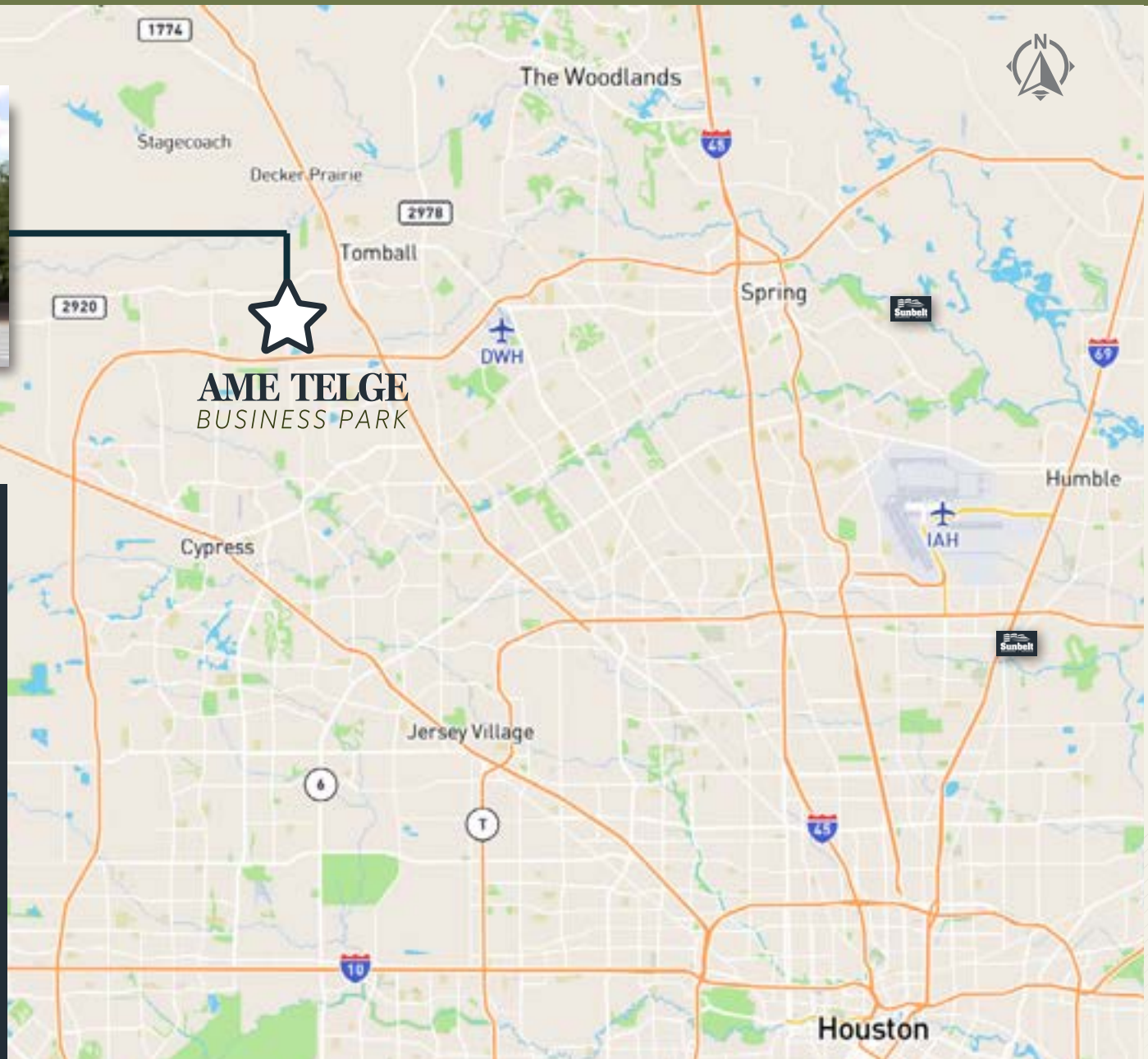
BUILDING C

- 5,750 SF
- 22' eaves
- Two 14' x 16' OH Doors
- Canopy over storefront
- 14' x 16' overhead doors
- 200-amp power / 3 phase
- 4 windows (2-street; 2-court)
- 4' wainscoting on street side and store front

BUILDING D

- 7,000 SF
- 22' eaves
- Two 14' x 16' OH Doors
- Canopy over storefront
- 14' x 16' overhead doors
- 200-amp power / 3 phase
- 4 windows (2-street; 2-court)
- 4' wainscoting on street side and store front

Conveniently located in Northwest Harris County near TX 99/Grand Parkway and TX SH 249



AME TELGE
BUSINESS PARK

DESTINATION

MILES

TX 99/GRAND PARKWAY

.9

TX 249

3.9

THE WOODLANDS

21.6

KATY

26.8

IAH

27

DOWNTOWN

33

GALLERIA

32

CONROE

32

AUSTIN

140

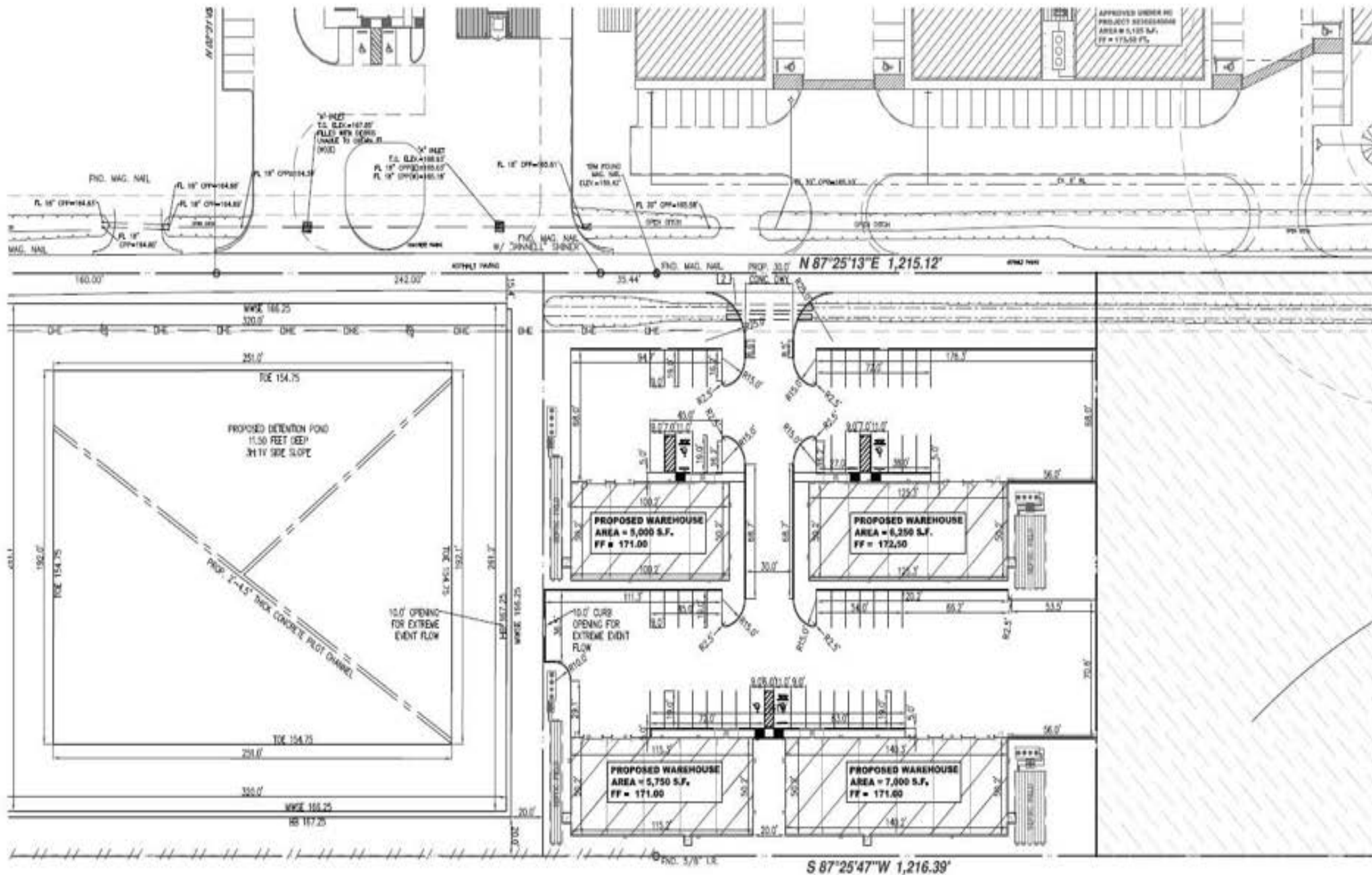
SAN ANTONIO

196

DALLAS-FORT WORTH

224

Civil Site Plan



AME TELGE BUSINESS PARK

FOR MORE INFORMATION,
PLEASE CONTACT:

Boomer White

President

+1 713 826 5033

boomer.white@revkocre.com

Jason Pate

Industrial Broker

+1 214 632 2242

jason@jsellersrealestate.com



© 2024 CBRE, Inc. All rights reserved. This information has been obtained from sources believed reliable, but has not been verified for accuracy or completeness. You should conduct a careful, independent investigation of the property and verify all information. Any reliance on this information is solely at your own risk. CBRE and the CBRE logo are service marks of CBRE, Inc. All other marks displayed on this document are the property of their respective owners. Photos herein are the property of their respective owners. Use of these images without the express written consent of the owner is prohibited.