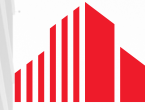


INDUSTRIAL STORAGE OR RAIL TRANSLOAD YARD
FOR LEASE

9501 NW 106TH STREET
MEDLEY, FL

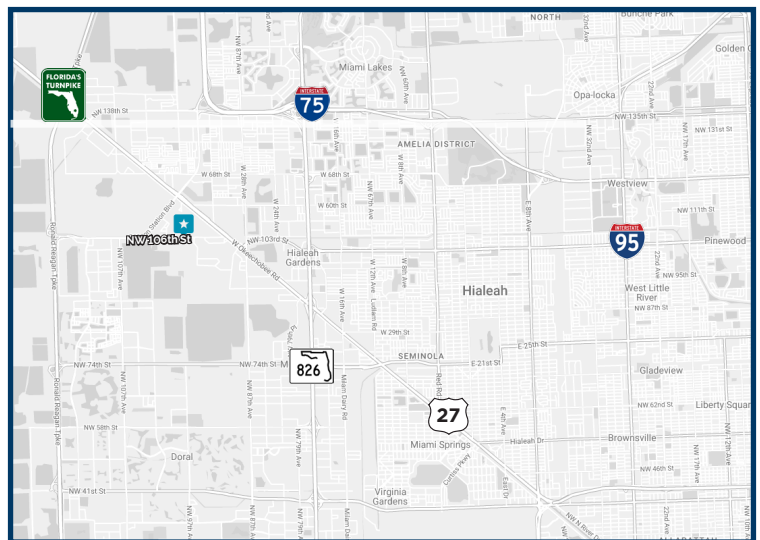


CUSHMAN &
WAKEFIELD



PROPERTY FEATURES

- ±7.5 Acres (All or Part)
- Concrete & asphalt paved
- Fully secured with perimeter fencing
- Zoning: Industrial/Light Mfg M-1
- FEC Rail Spur Available
- Potential for a new rail served transload operation on the Florida East Coast Railway
- Call for Pricing



FOR MORE INFORMATION, PLEASE CONTACT:

IVANNA LEITNER PEREZ

Associate
+1 786 853 5431
ivanna.leitner@cushwake.com

MICHAEL FLYNN

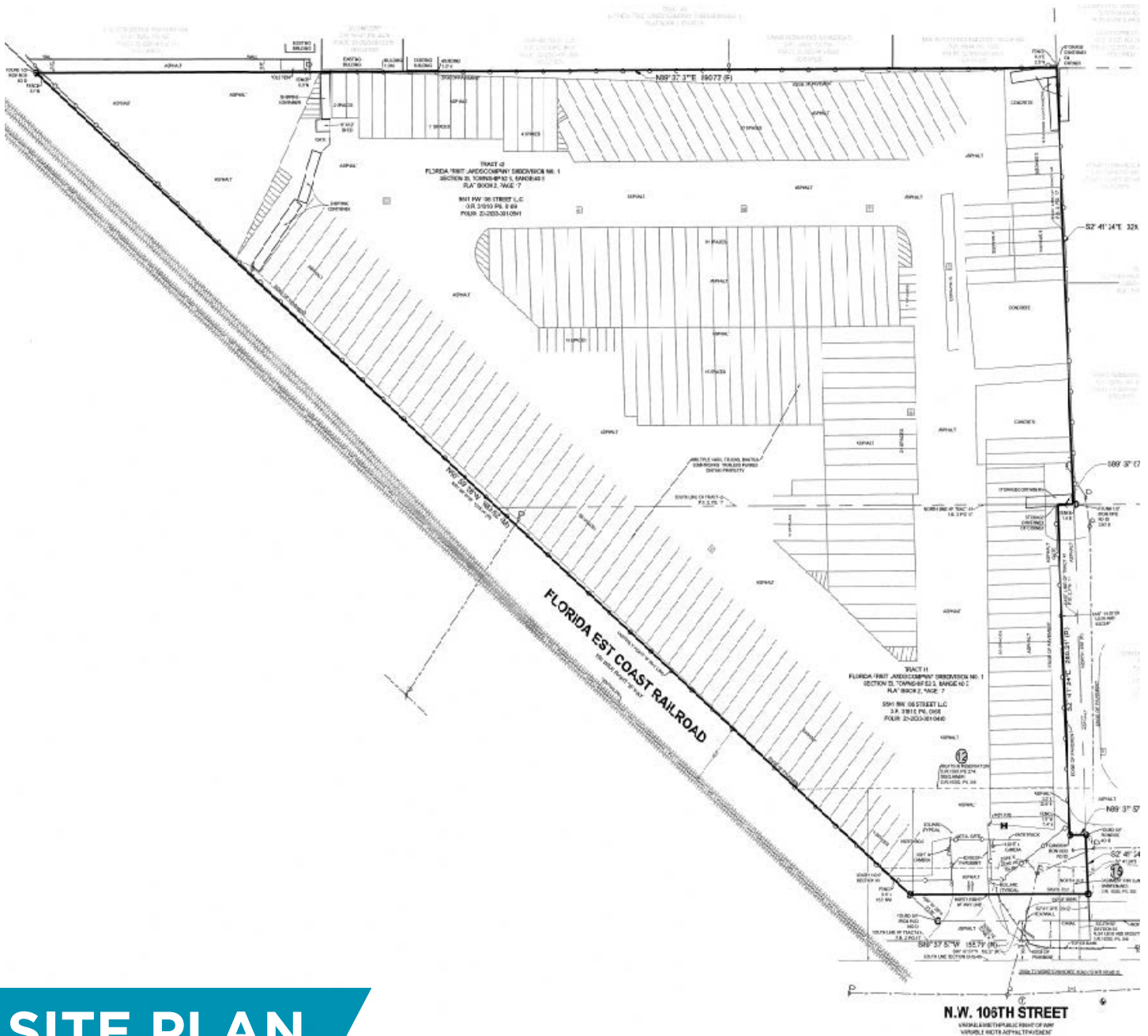
Senior Director - Rail Advisory Group
+1 908 868 2022
michael.flynn@cushwake.com

WAYNE RAMOSKI

Vice Chairman
+1 786 210 3563
wayne.ramoski@cushwake.com

INDUSTRIAL STORAGE OR RAIL TRANSLOAD YARD
FOR LEASE

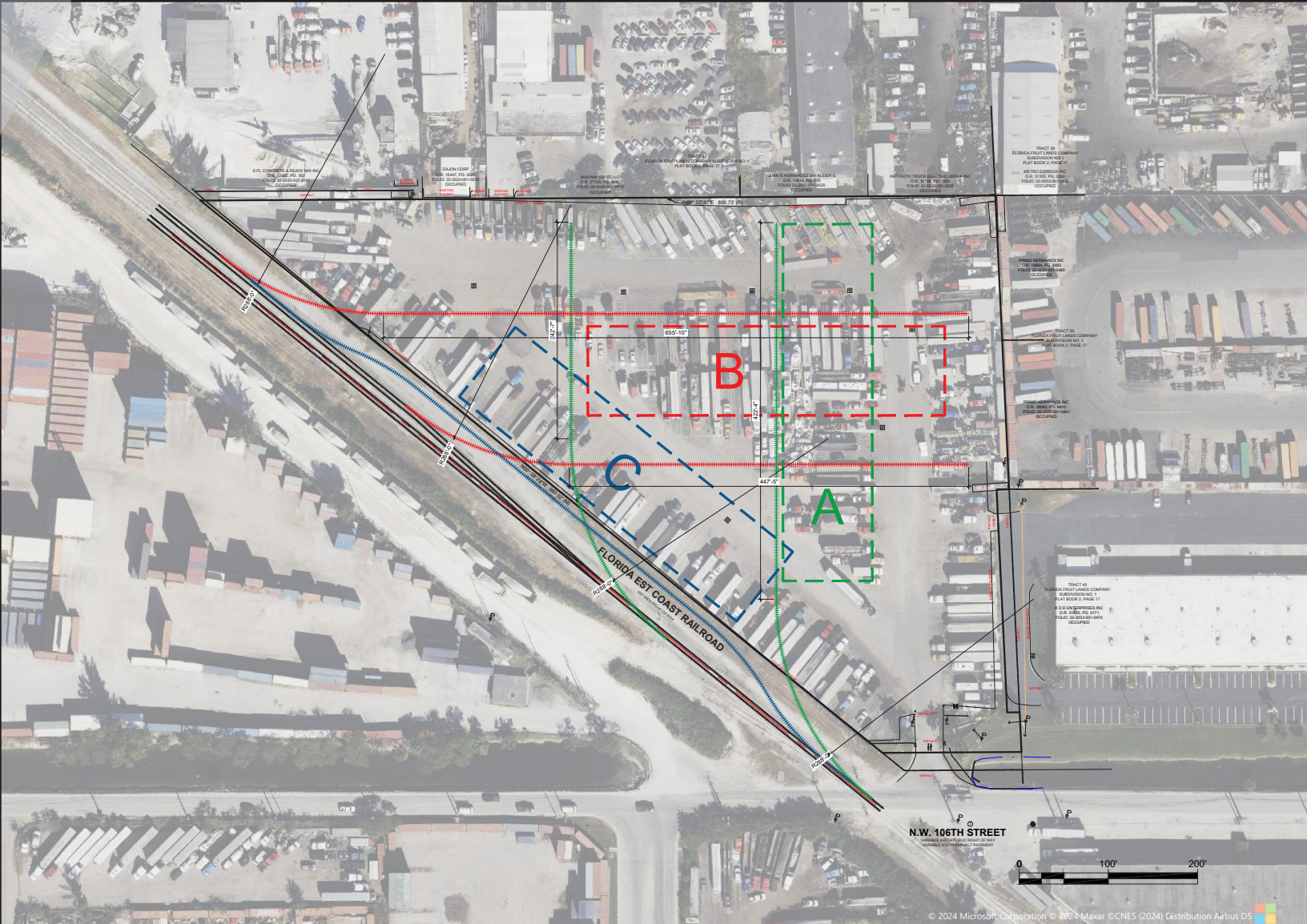
9501 NW 106TH STREET
MEDLEY, FL



SITE PLAN

INDUSTRIAL STORAGE OR RAIL TRANSLOAD YARD
FOR LEASE

9501 NW 106TH STREET
MEDLEY, FL



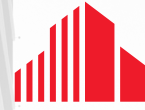
FEC RAIL SPUR OPTIONS A, B + C

TRANSLOAD SITE

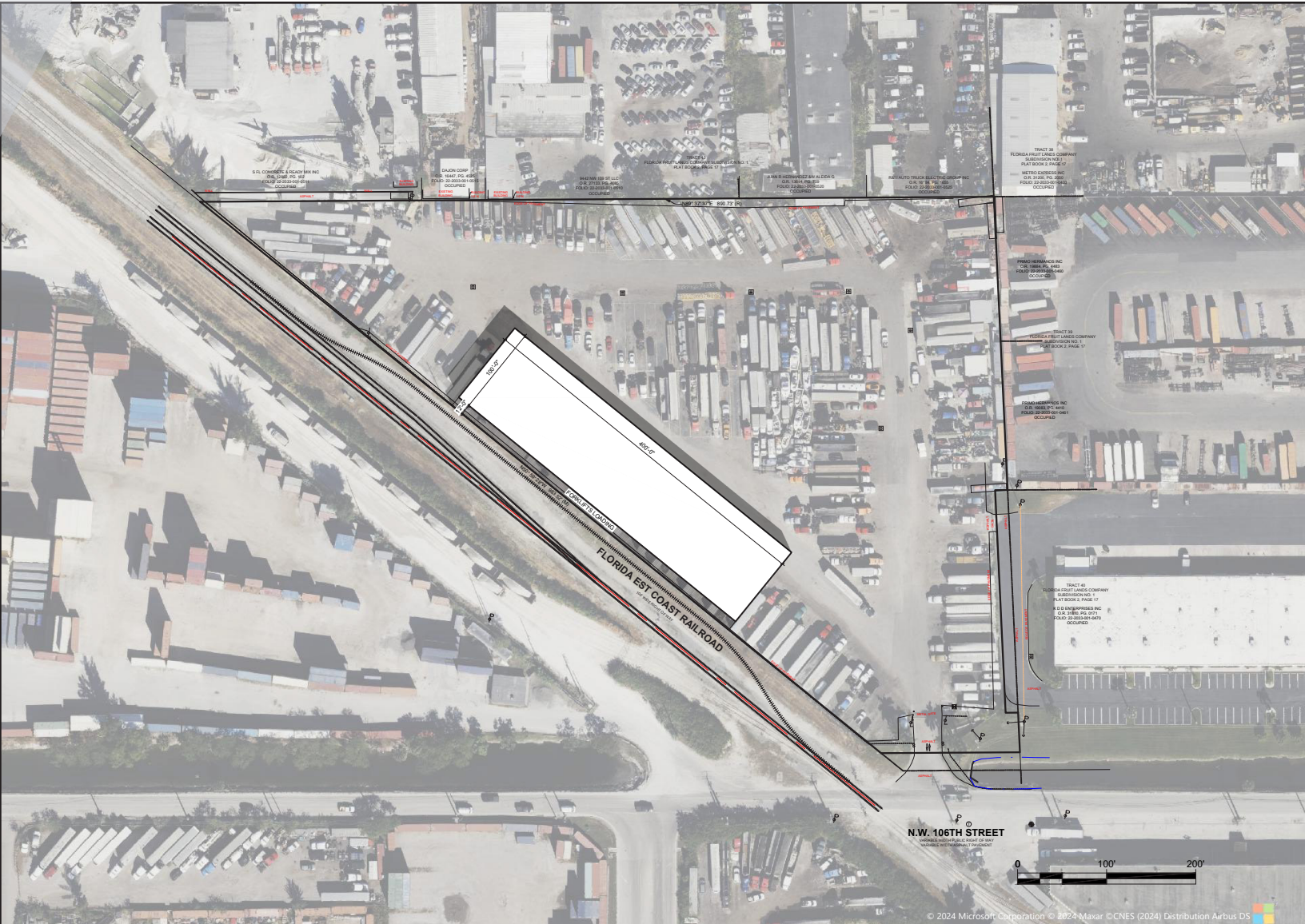
- Largest potential transload site on the FEC in the Miami market
- Option for rail served warehouse or open transload and storage yard
- FEC has interchange abilities with Norfolk Southern and CSX

INDUSTRIAL STORAGE OR RAIL TRANSLOAD YARD
FOR LEASE

9501 NW 106TH STREET
MEDLEY, FL



CUSHMAN &
WAKEFIELD



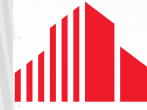
FEC RAIL SPUR OPTIONS C

TRANSLOAD SITE

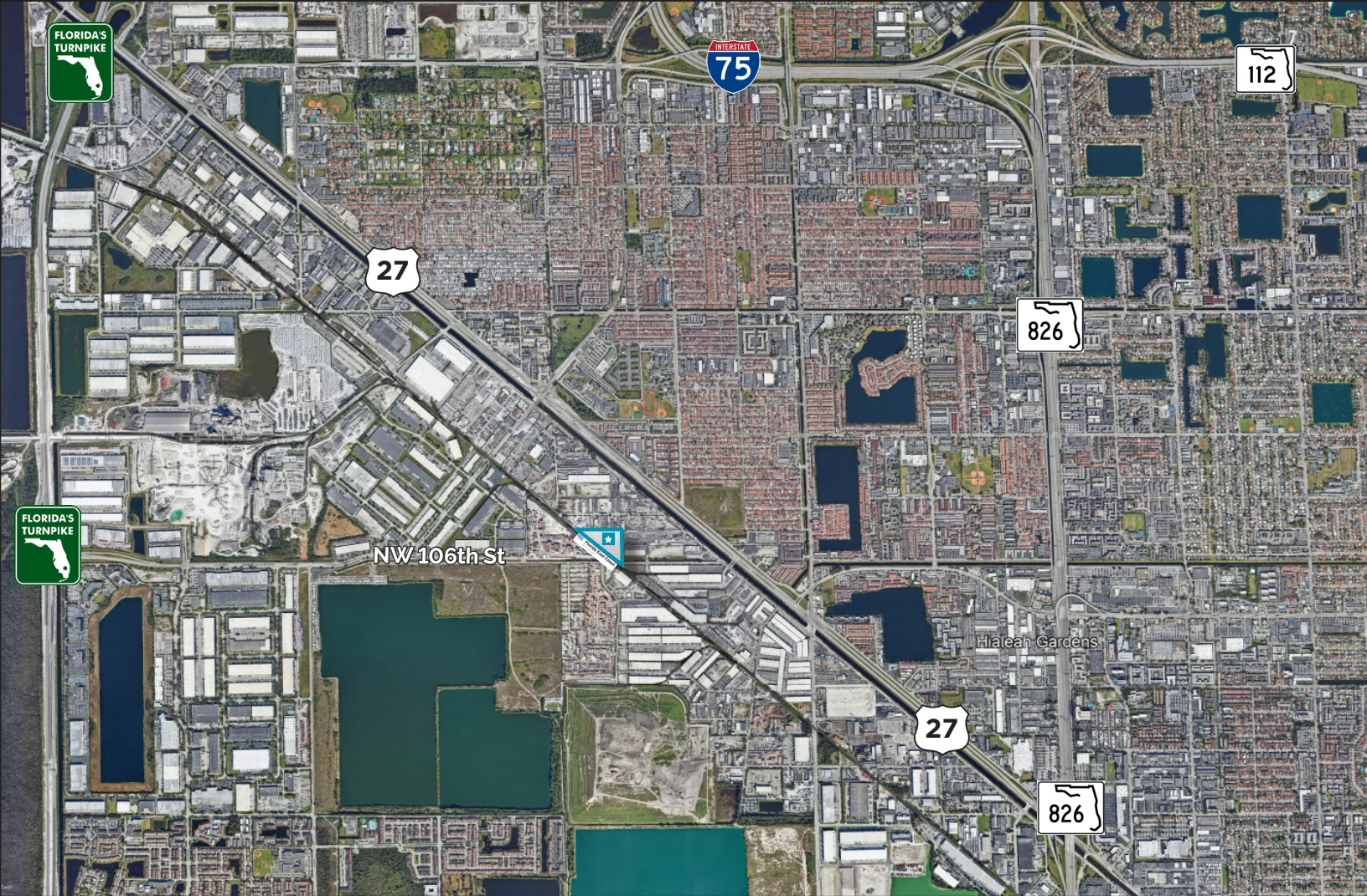
- Largest potential transload site on the FEC in the Miami market
- Option for rail served warehouse or open transload and storage yard
- FEC has interchange abilities with Norfolk Southern and CSX

INDUSTRIAL STORAGE OR RAIL TRANSLOAD YARD
FOR LEASE

9501 NW 106TH STREET
MEDLEY, FL



CUSHMAN &
WAKEFIELD



CONTACT INFORMATION

IVANNA LEITNER PEREZ

Associate
+1 786 853 5431
ivanna.leitner@cushwake.com

MICHAEL FLYNN

Senior Director - Rail Advisory Group
+1 908 868 2022
michael.flynn@cushwake.com

WAYNE RAMOSKI

Vice Chairman
+1 786 210 3563
wayne.ramoski@cushwake.com

© 2024 CUSHMAN & WAKEFIELD. ALL RIGHTS RESERVED. THE INFORMATION CONTAINED IN THIS COMMUNICATION IS STRICTLY CONFIDENTIAL. THIS INFORMATION HAS BEEN OBTAINED FROM SOURCES BELIEVED TO BE RELIABLE BUT HAS NOT BEEN VERIFIED. NO WARRANTY OR REPRESENTATION, EXPRESS OR IMPLIED, IS MADE AS TO THE CONDITION OF THE PROPERTY (OR PROPERTIES) REFERENCED HEREIN OR AS TO THE ACCURACY OR COMPLETENESS OF THE INFORMATION CONTAINED HEREIN, AND SAME IS SUBMITTED SUBJECT TO ERRORS, OMISSIONS, CHANGE OF PRICE, RENTAL OR OTHER CONDITIONS, WITHDRAWAL WITHOUT NOTICE, AND TO ANY SPECIAL LISTING CONDITIONS IMPOSED BY THE PROPERTY OWNER(S). ANY PROJECTIONS, OPINIONS OR ESTIMATES ARE SUBJECT TO UNCERTAINTY AND DO NOT SIGNIFY CURRENT OR FUTURE PROPERTY PERFORMANCE.