



## Crown Hill Plaza

- For Lease: +/- 1,010 - 1,800 SF (with patio opportunity)
- For Sale: 1.67 acre Pad Site

123-157 Crown Hill Road, Excelsior Springs, Missouri 64024

Kayla Hutchings

c: 913.850.9810 | o: 913.747.3325  
e: kayla@fishmancommercial.com

Justin Kaufmann

c: 816.786.9131 | o: 913.747.3340  
e: justin@fishmancommercial.com

### Disclaimer

Information furnished regarding property is from sources deemed reliable but no warranty or representation is made as to the accuracy thereof and same is submitted subject to errors, omissions, prior sale of lease or withdrawal without notice.



# Area Demographics



## Total Population

5-mile	17,118
10-mile	44,501
20-mile	334,170



## Household Income (Avg.)

5-mile	\$92,480
10-mile	\$104,134
20-mile	\$100,770



## Median Age

5-mile	41.7
10-mile	41.8
20-mile	38.9

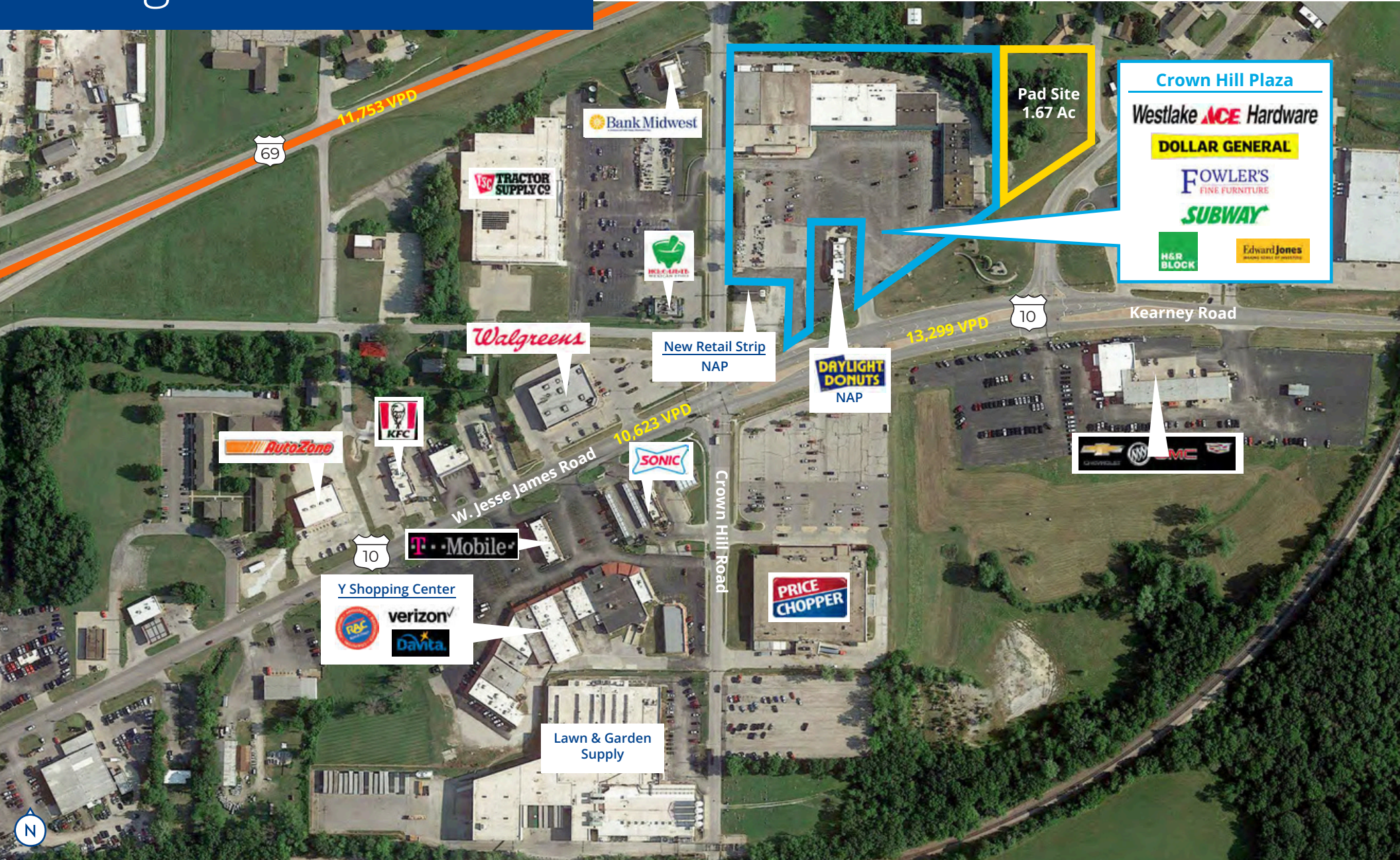


## Daytime Population

5-mile	14,036
10-mile	34,703
20-mile	276,265



# Neighborhood Aerial







FOR LEASE

# Crown Hill Plaza

123-157 Crown Hill Road, Excelsior Springs, Missouri 64024

CONTACT:

Justin Kaufmann

c: 816.786.9131 | o: 913.747.3340

e: justin@fishmancommercial.com

Kayla Hutchings

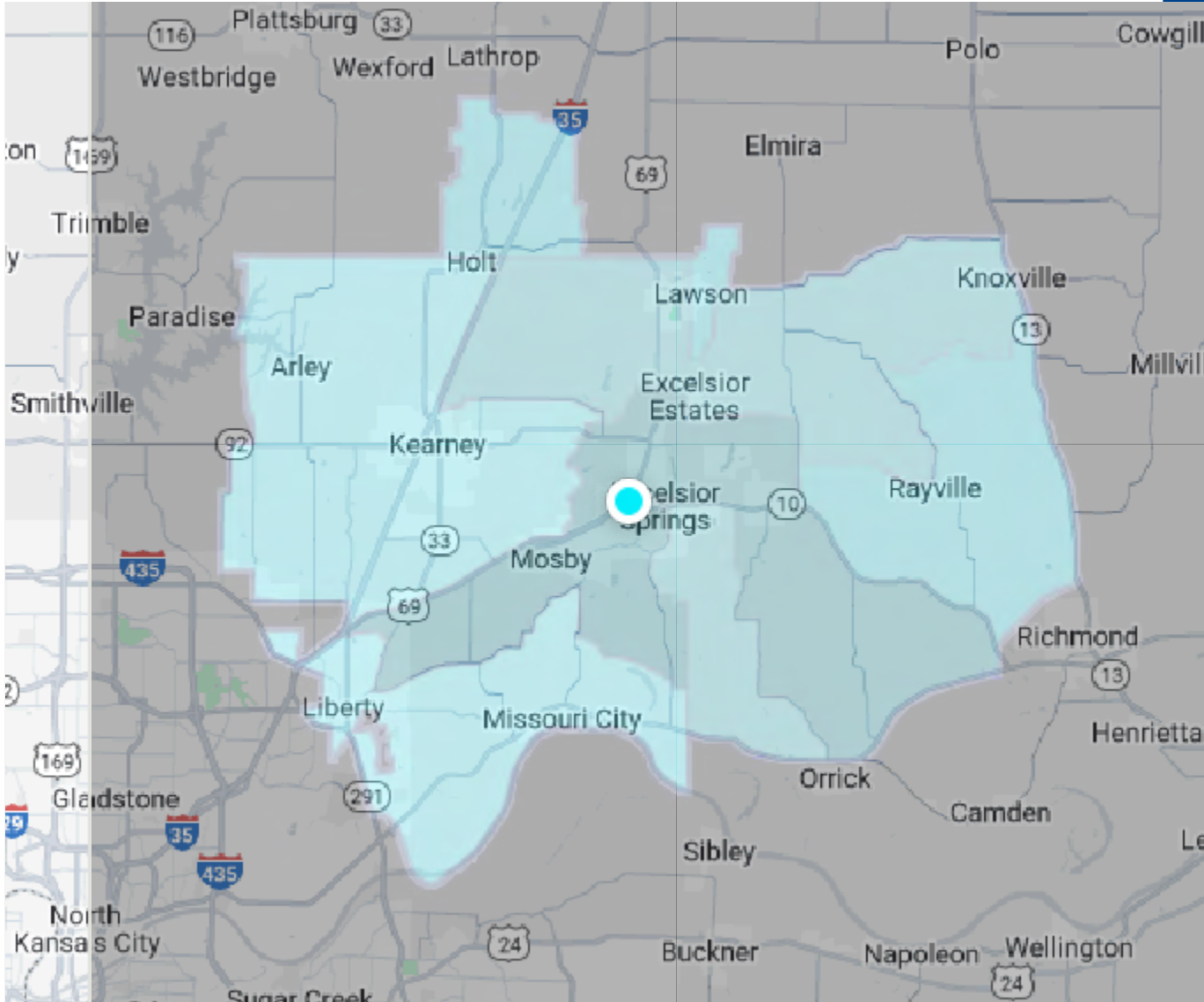
c: 913.850.9810 | o: 913.747.3325

e: kayla@fishmancommercial.com

## AVAILABLE SPACES:

- 127 Crown Hill Rd:	+/- 1,010 sf
- 141-143 Crown Hill Rd:	+/- 1,800 sf
- 153 Crown Hill Rd:	+/- 1,600 sf

# Trade Area **Demographics**



Source: Advan



Total Population  
**75,702**



Total Households  
**28,322**



Bachelor's Degree  
**21.7%**



Median Household  
Income  
**\$86,298**