

FOR LEASE

217 N Charles St, Baltimore, MD 21201



ABOUT THE PROPERTY

217 N Charles St. is conveniently located near the Baltimore City Court House and Mercy Hospital. The surrounding neighborhood has a diverse collection of retail, office, apartments, non-profits, and educational facilities. It is located in the CBD with the ability to accommodate a wide array of general and unique office and service-based uses.

Contact Us



30 E. Padonia Road, Suite 504
Timonium, MD 21093



Visit Us
troutdaniel.com



Call Us
410.435.4004

Leo McDermott
202.744.6910
lmcdermott@troutdaniel.com

Peter Coe
443.921.9322
pcoe@troutdaniel.com

Coleman Tirone
443.921.9328
ctirone@troutdaniel.com

Gary S. Olschansky
443.921.9348
golschansky@troutdaniel.com

Steven L. Cornblatt
443.921.9331
scornblatt@troutdaniel.com

★ Property Overview

TWO SEVENTEEN NORTH CHARLES STREET

PROPERTY DETAILS

Lease Rate

\$18.00 - 22.00 SF/yr (MG)

Building Size

26,400 Square Feet

Available SF

9,000 Square Feet
4th Floor - 4,500 Sq. Ft
5th Floor - 4,500 Sq. Ft

Lot Size

0.13 Acres

Year Built

1920

Zoning

B-4-2

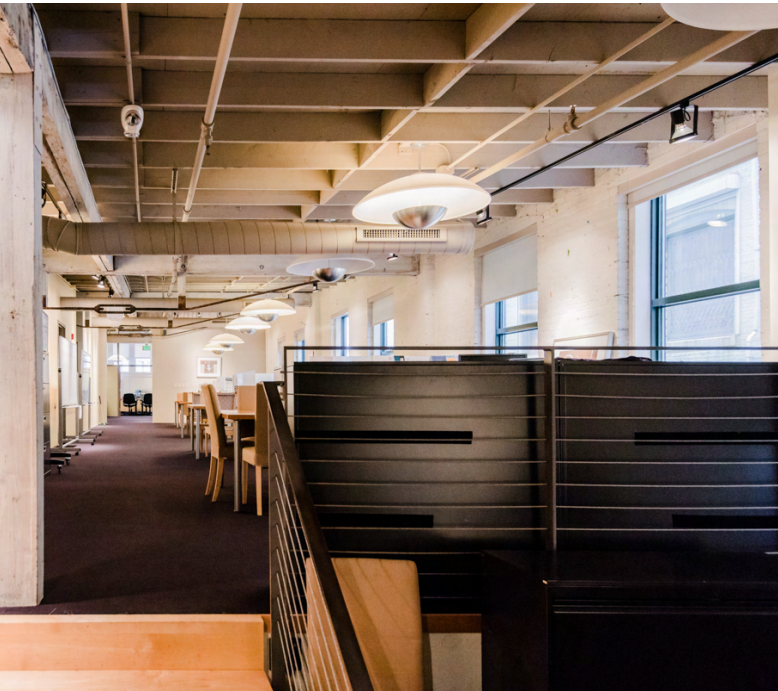
Submarket

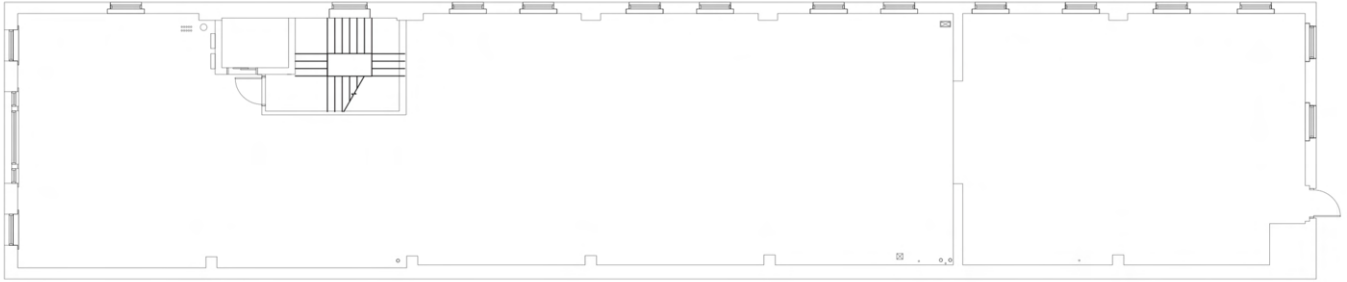
CBD Baltimore / Mt. Vernon

PROPERTY HIGHLIGHTS

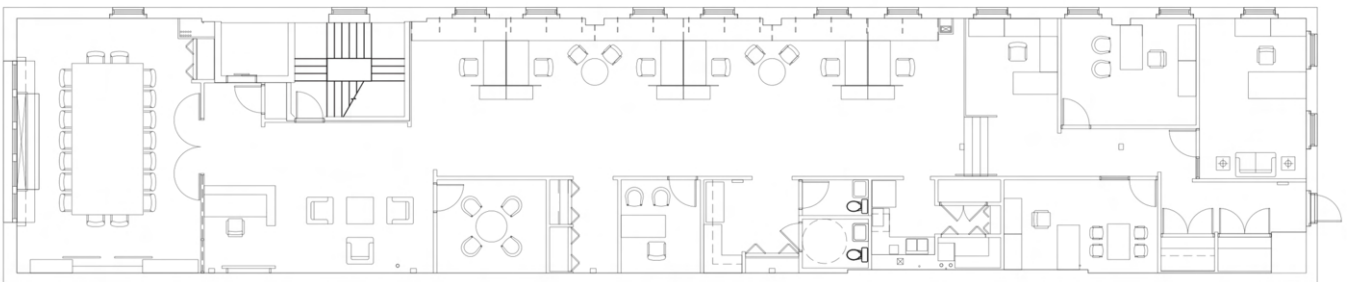
- The building has high ceilings and beautiful exposed brick
- 24-hour access, with secure building features including property management on site
- Located next to Baltimore's highly walkable Inner Harbor and surrounded by popular restaurants, retail, lodging, and entertainment options
- The property is less than a mile away from World-Famous: The Inner Harbor
- Adjacent parking garages. Easily accessible public transportation., quick highway access.
- Proximate to the Baltimore City Court House & Mercy Hospital.
- Proven home to attorneys, designers, and retailers
- Well-maintained, historic building

★ Additional Photos



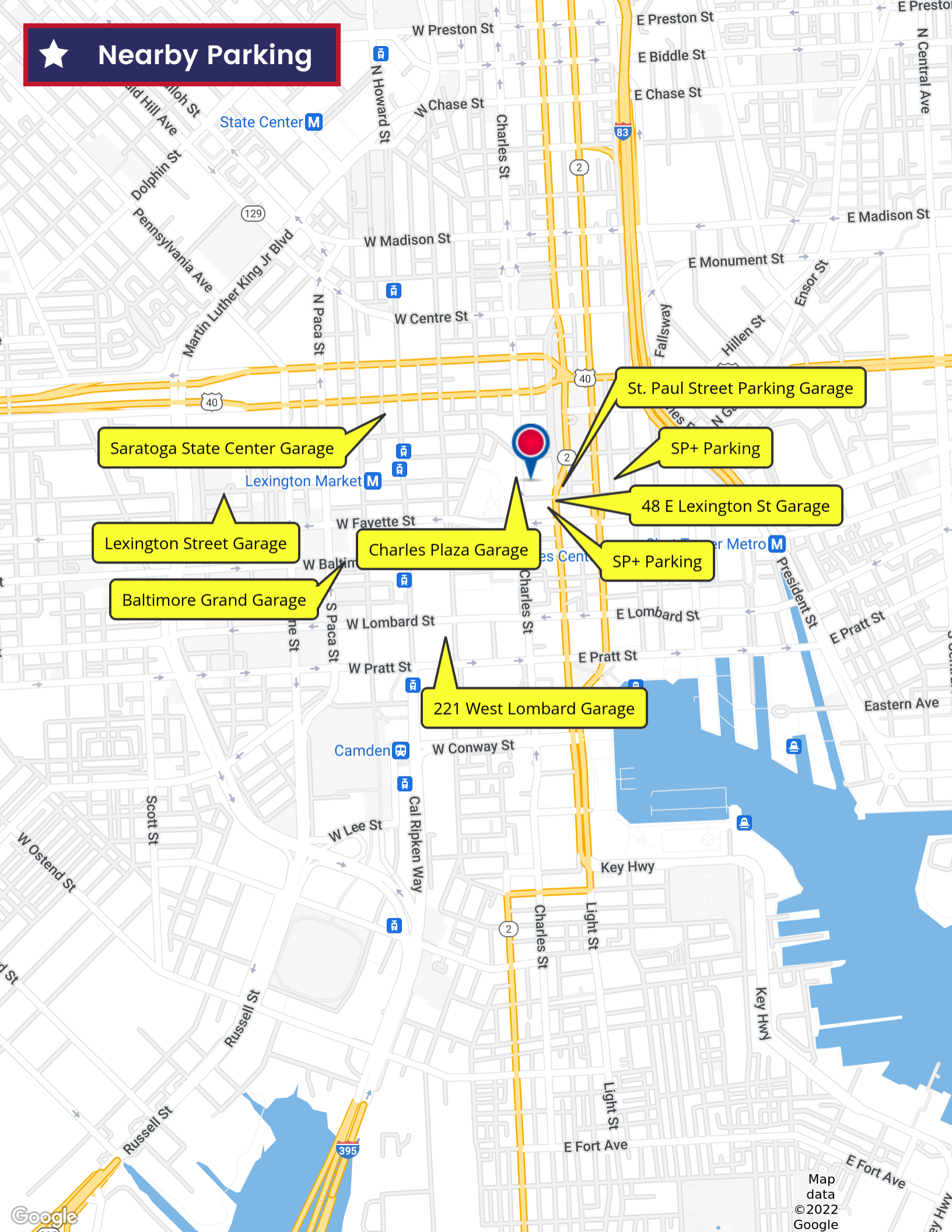


217 NORTH CHARLES ST. 4TH FLOOR



217 NORTH CHARLES ST. 5TH FLOOR

★ **Nearby Parking**



Saratoga State Center Garage

St. Paul Street Parking Garage

SP+ Parking

Lexington Street Garage

Charles Plaza Garage

48 E Lexington St Garage

SP+ Parking

Baltimore Grand Garage

221 West Lombard Garage

★ Retail Map

THE ART WALTERS MUSEUM

John Hopkins Hospital

Mercy MEDICAL CENTER

THE HARBOR BANK OF MARYLAND

Bank of America

WELLS FARGO



Baltimore City Circuit Court

University of Maryland Medical Center



District Court of Maryland

ORIOLE PARK OF CAMDEN YARDS

Port Discovery Children's Museum

PNC



Hyatt Regency Baltimore Inner Harbor



American Visionary Art Museum

Baltimore Museum of Industry

★ Transit Data

TWO SEVENTEEN NORTH CHARLES STREET



TRANSIT/SUBWAY

Charles Center Transit Stop
(Metro Subway)



2 Minutes



5 Minutes



0.2 Miles



COMMUTER RAIL

Camden Station Commuter Rail
(Camden Line)



4 Minutes



18 Minutes



0.9 Miles



AIRPORT

Baltimore-Washington
International Airport



19 Minutes



N/A Minutes



10.5 Miles



TROUT DANIEL & ASSOCIATES



Leo McDermott

Senior Associate

202.744.6910

lmcdermott@troutdaniel.com



Peter Coe

Associate

443.921.9322

pcoe@troutdaniel.com



Coleman Tirone

Associate

443.921.9328

ctirone@troutdaniel.com



Gary S. Olschansky

Investment Sales

443.921.9348

golschansky@troutdaniel.com



Steven L. Cornblatt

Principal

443.921.9331

scornblatt@troutdaniel.com

TWO SEVENTEEN NORTH CHARLES STREET

2

Contact Us



30 E. Padonia Road, Suite 504

Timonium, MD 21093



Visit Us

troutdaniel.com



Call Us

410.435.4004

The information contained in this marketing brochure has been obtained from sources we believe to be reliable; however, Trout Daniel & Associates LLC has not verified, and will not verify any of the information contained herein, nor has Trout Daniel & Associates LLC conducted any investigation regarding these matters and makes no warranty or representation whatsoever regarding the accuracy or completeness of the information provided. An agent indicated by an asterisk (*) has a direct or indirect ownership interest in this property.