



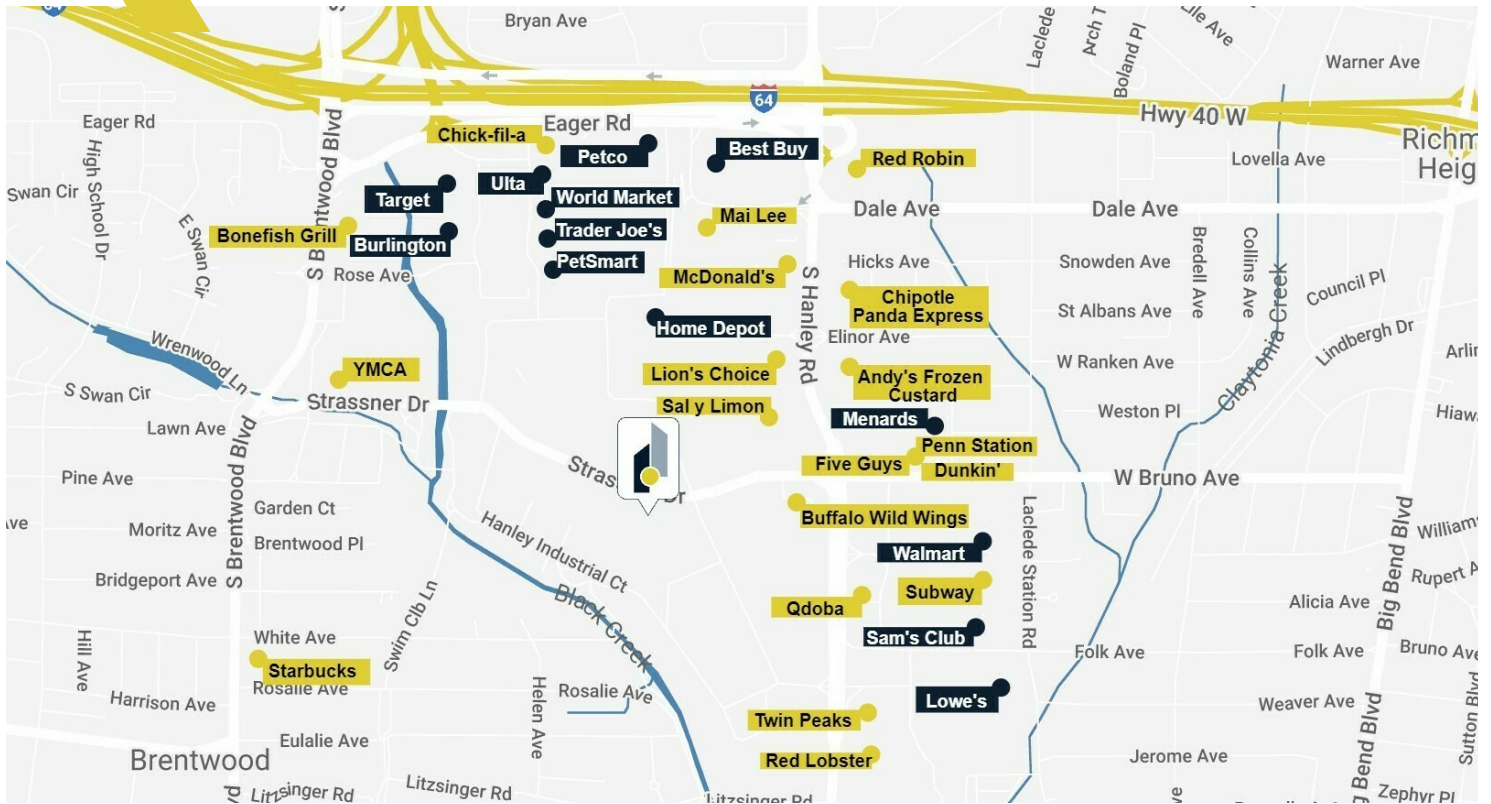
 LUTHERAN
SENIOR
SERVICES
1300

FOR LEASE

1300 Strassner Drive | Brentwood, MO 63144

 INTELICA

1300 Strassner Drive

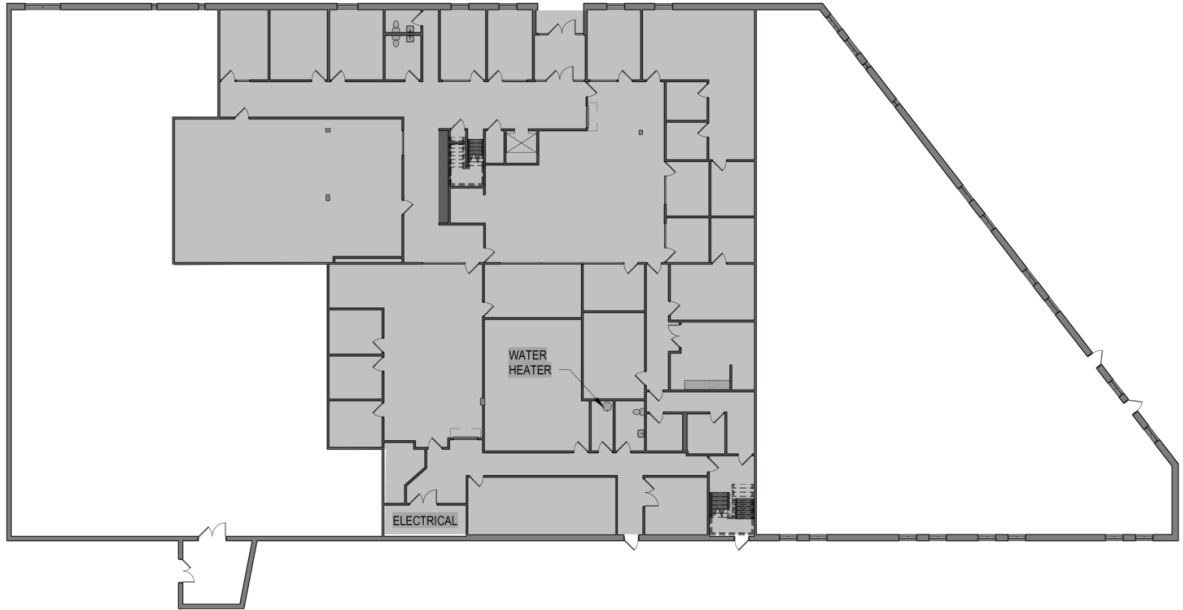


Property Highlights

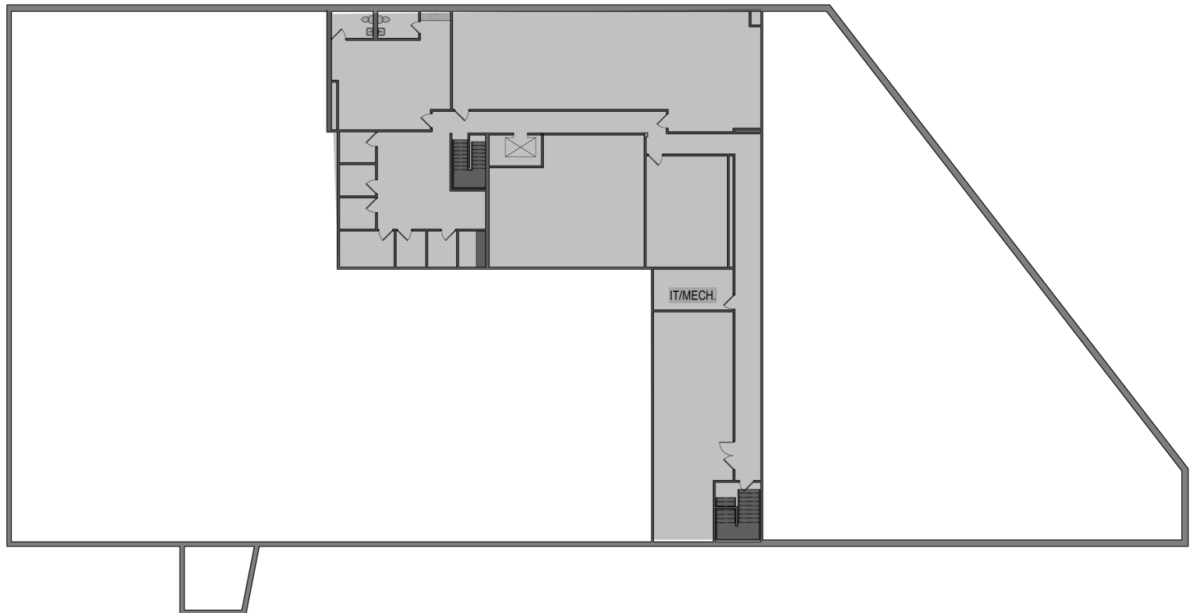
- 19,333 SF (Divisible) creative office space with opportunity to convert to flex/warehouse
- Available September 2024
- Prime location in Hanley Industrial park with close proximity to numerous amenities including restaurants and retail
- Excellent access to Highway 64/40 and I-170
- Building signage available
- Up to 5/1,000 SF parking ratio



Floor Plans



First Floor



Second Floor

Broker Contacts



Ed Backer | SIOR

Principal
(314) 744-8997
ebacker@intcre.com



Joel Meyer | SIOR

Principal
(314) 744-8992
jmeyer@intcre.com



Michael Backer

Vice President | Brokerage
(314) 744-8979
mbacker@intcre.com



Ericka Seidel

Senior Associate | Brokerage
(314) 528-2296
eseidel@intcre.com