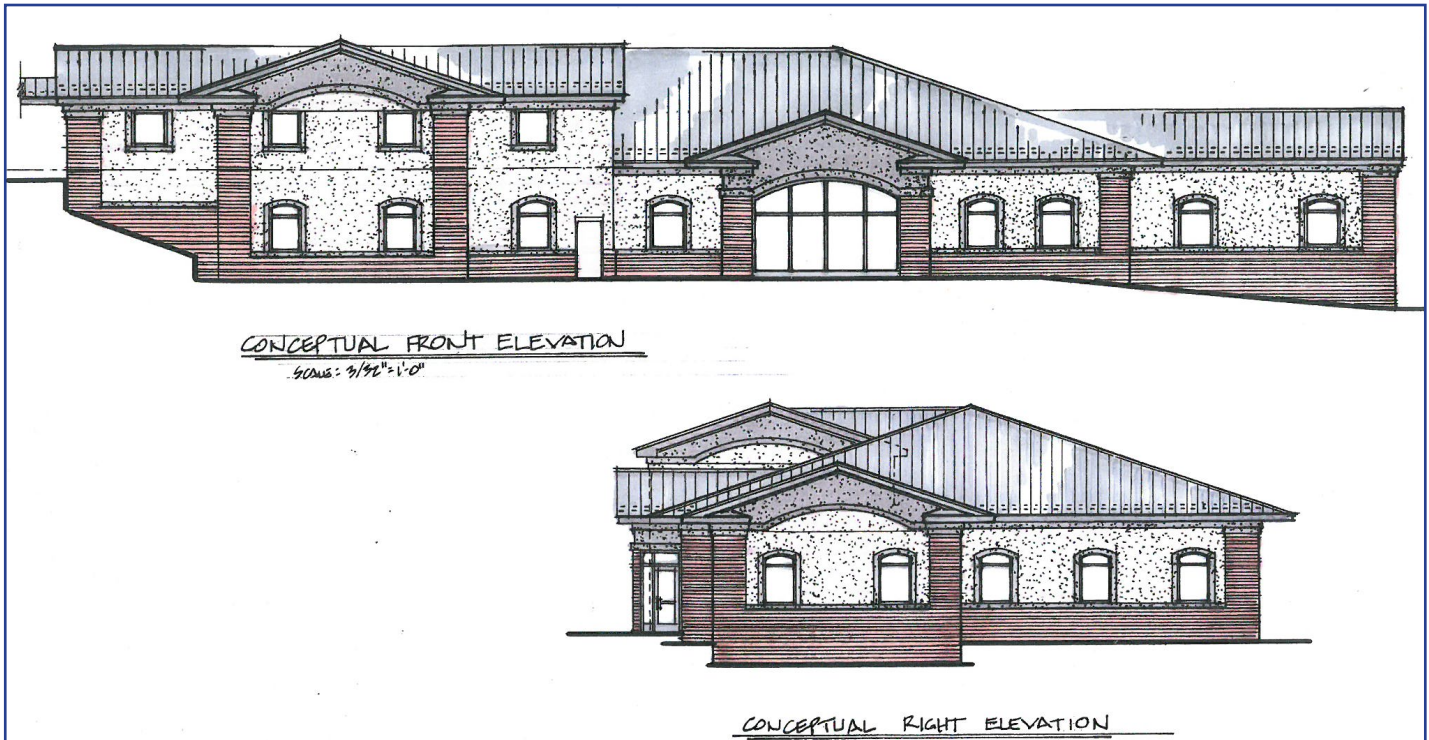


NOW LEASING

CARMEL SQUARE PROFESSIONAL BUILDING

S.R. 48 - JACKS RUN ROAD
NORTH VERSAILLES PA 15137



Property Highlights:

- Size of Center: 20,278 +/- Square Feet
- Tenant Spaces:
 - Ground Level: 9,214 +/- Square Feet
 - First Floor: 1,798-11,064 +/- Square Feet
- Occupancy: 2019
- Zoned: Commercial
- Ample Free Parking
- Located next to the Carmel Square and East Allegheny Middle/High Schools and minutes from PA Turnpike, Route 376 and Route 30
- Rental Rate: \$12.50 psf + NNN/CAM, all utilities + janitorial

DEMOGRAPHICS

	1 Mile	3 Mile	5 Mile
2018 Population	3,439	40,169	128,468
Median HH Income	\$52,422	\$49,300	\$47,596



CONTACT:
David Hanley
Broker
412.261.6532 x237
david@prudentialrealty.com

PRC Commercial
3700 South Water Street
Suite 105
Pittsburgh, PA 15203
www.prudentialrealty.com

All information furnished regarding this property for sale, rental, or financing is from sources deemed reliable but no warranty or representation is made as to the accuracy thereof and same is submitted subject to errors, omissions, change of price, rental or other conditions prior to sale, lease, or financing or withdrawal without notice. PRC Commercial will make no representation and assume no obligation regarding the presence or absence of toxic or hazardous waste or substances or other undesirable material on or about the property which will ultimately be leased or purchased.