

INVESTMENT PROPERTY FOR SALE

FULLY LEASED AUTO REPAIR SHOP

445 E. Main Street, East Patchogue, NY 11772



For More Information:



Michael G. Murphy

President | Commercial Division
Douglas Elliman Commercial - Long Island
631.834.2626
michael.murphy@elliman.com

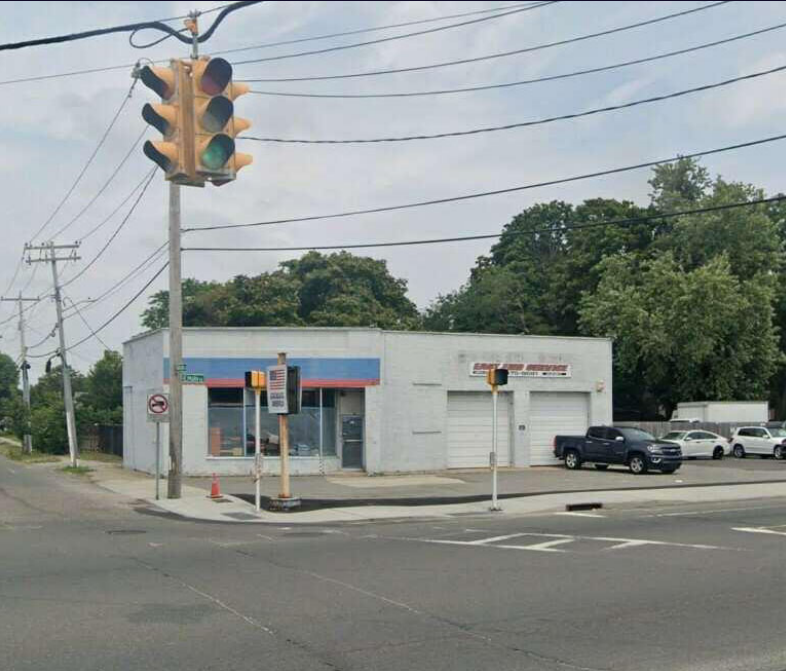
WWW.ELLMANCOMMERCIAL.COM

THE PROPERTY CONTAINED WITHIN THIS DOCUMENT IS BEING EXCLUSIVELY REPRESENTED BY DOUGLAS ELLIMAN REAL ESTATE COMMERCIAL DIVISION, 650 SMITHTOWN BYPASS STE. 117 SMITHTOWN, NY 11787 631 858-2405 © 2023 DOUGLAS ELLIMAN COMMERCIAL OF LI, LLC. ALL MATERIAL PRESENTED HEREIN IS INTENDED FOR INFORMATION PURPOSES ONLY. WHILE THIS INFORMATION IS BELIEVED TO BE CORRECT, IT IS REPRESENTED SUBJECT TO ERRORS, OMISSIONS, CHANGES OR WITHDRAWAL WITHOUT NOTICE. ALL PROPERTY INFORMATION, INCLUDING, BUT NOT LIMITED TO SQUARE FOOTAGE, ROOM COUNT, ZONING IN THE LISTING SHOULD BE VERIFIED BY YOUR OWN ATTORNEY, ARCHITECT OR ZONING EXPERT. IF YOUR PROPERTY IS CURRENTLY LISTED WITH ANOTHER REAL ESTATE BROKER, PLEASE DISREGARD THIS OFFER. IT IS NOT OUR INTENTION TO SOLICIT THE OFFERINGS OF OTHER REAL ESTATE BROKERS. WE COOPERATE WITH THEM FULLY. EQUAL HOUSING OPPORTUNITY.



Corner Retail Property For Sale

445 E. Main Street | East Patchogue, NY 11772



Offering Summary	
Sale Price:	\$775,000.00
Annual Taxes:	\$13,820.09
Building Size:	2,029 SF
Lot Size:	0.37 Acres
Frontage:	105 Feet
Curb Cuts:	(3) Three

Property Overview

Available for Sale - Fully Leased! 2,029 +/- SF Auto Repair Shop on a Busy Corner in the Heart of Patchogue! Located a 4 Way Traffic Light. This Property Features 3 Curb Cuts. 0.37 Acre Lot With 105 Feet of Frontage. An Ideal Redevelopment Opportunity! Strategically Located on Heavily Traveled Montauk Highway with Traffic Counts of Over 25k Vehicles Per Day! Great Investment Opportunity!

Property Highlights

- Ideal Investment Property
- Fully Leased Auto Repair Shop
- Minutes From Patchogue Village

For More Information:



Michael G. Murphy

President | Commercial Division
 Douglas Elliman Commercial - Long Island
 631.834.2626
 michael.murphy@elliman.com



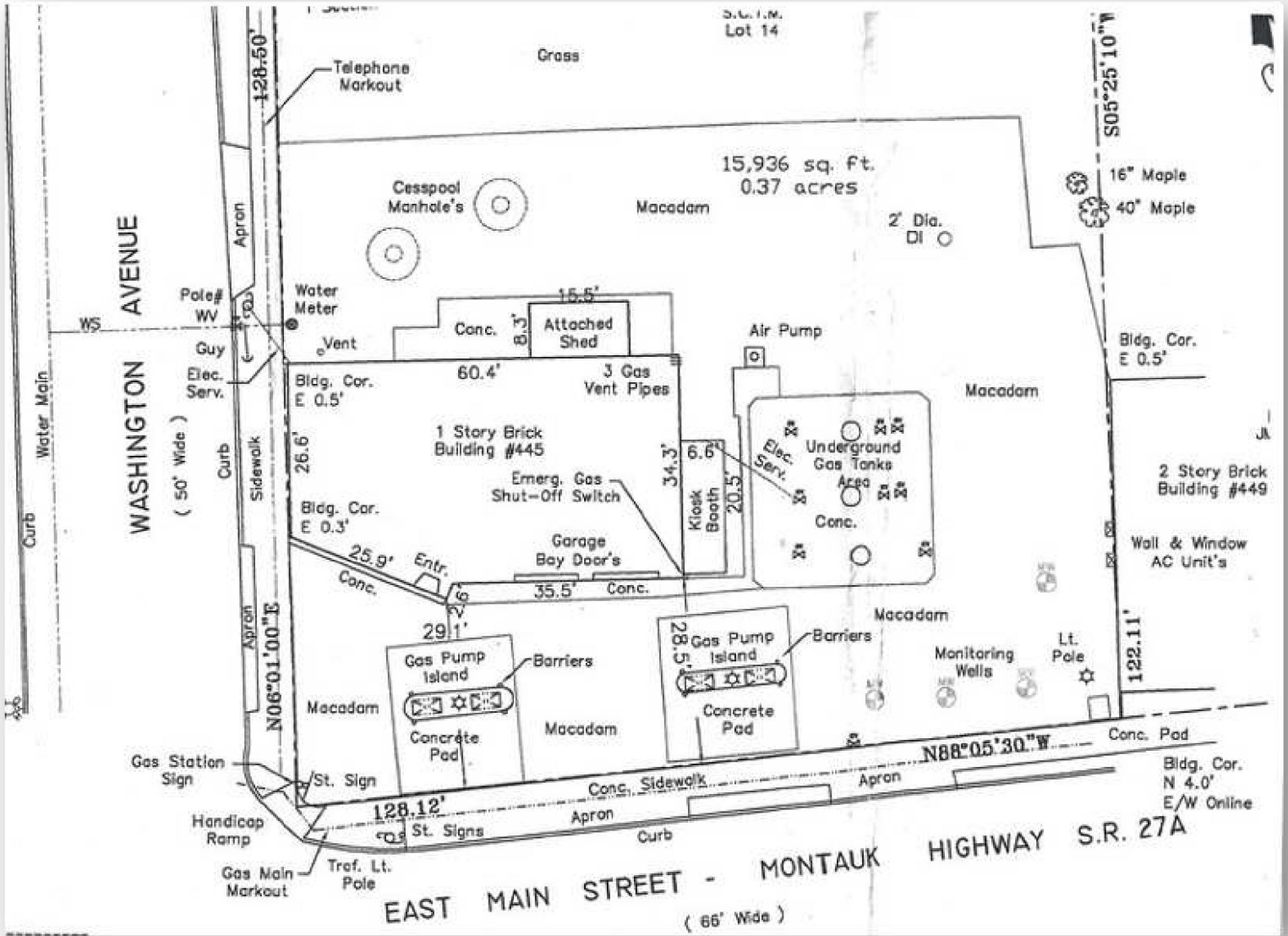
WWW.ELLIMANCOMMERCIAL.COM

THE PROPERTY CONTAINED WITHIN THIS DOCUMENT IS BEING EXCLUSIVELY REPRESENTED BY DOUGLAS ELLIMAN REAL ESTATE COMMERCIAL DIVISION, 550 SMITHTOWN BYPASS STE. 117 SMITHTOWN, NY 11787 631.858.2405 © 2023 DOUGLAS ELLIMAN COMMERCIAL OF LI, LLC. ALL MATERIAL PRESENTED HEREIN IS INTENDED FOR INFORMATION PURPOSES ONLY. WHILE THIS INFORMATION IS BELIEVED TO BE CORRECT, IT IS REPRESENTED SUBJECT TO ERRORS, OMISSIONS, CHANGES OR WITHDRAWAL WITHOUT NOTICE. ALL PROPERTY INFORMATION, INCLUDING, BUT NOT LIMITED TO SQUARE FOOTAGE, ROOM COUNT, ZONING IN THE LISTING SHOULD BE VERIFIED BY YOUR OWN ATTORNEY, ARCHITECT OR ZONING EXPERT. IF YOUR PROPERTY IS CURRENTLY LISTED WITH ANOTHER REAL ESTATE BROKER, PLEASE DISREGARD THIS OFFER. IT IS NOT OUR INTENTION TO SOLICIT THE OFFERINGS OF OTHER REAL ESTATE BROKERS. WE COOPERATE WITH THEM FULLY. EQUAL HOUSING OPPORTUNITY.



Property Survey

445 E. Main Street | East Patchogue, NY 11772



For More Information:

Michael G. Murphy

President | Commercial Division
 Douglas Elliman Commercial - Long Island
 631.834.2626
 michael.murphy@elliman.com



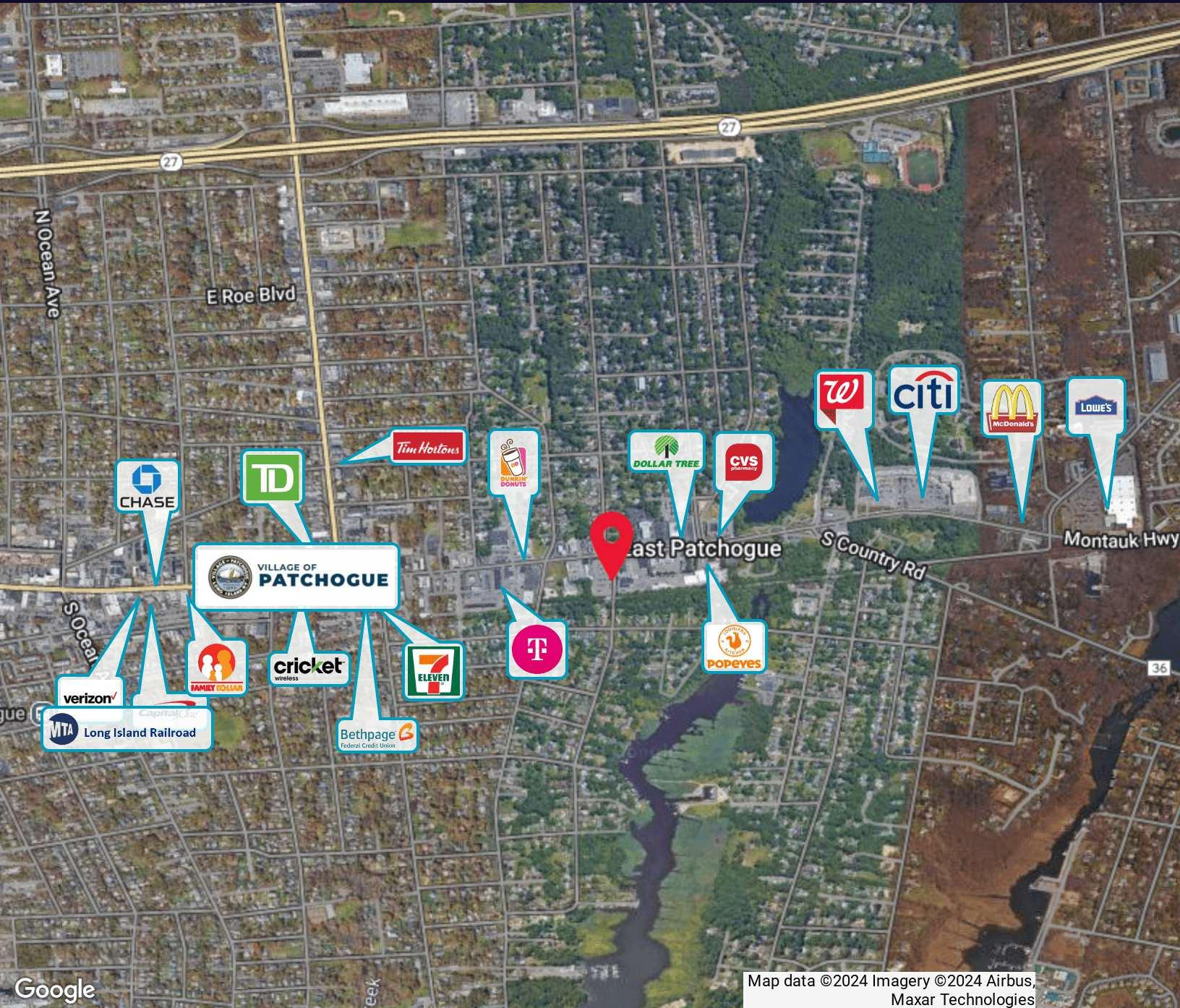
WWW.ELLIMANCOMMERCIAL.COM

THE PROPERTY CONTAINED WITHIN THIS DOCUMENT IS BEING EXCLUSIVELY REPRESENTED BY DOUGLAS ELLIMAN REAL ESTATE COMMERCIAL DIVISION, 550 SMITHTOWN BYPASS STE. 117 SMITHTOWN, NY 11787 631.858.2405 © 2023 DOUGLAS ELLIMAN COMMERCIAL OF LI, LLC. ALL MATERIAL PRESENTED HEREIN IS INTENDED FOR INFORMATION PURPOSES ONLY. WHILE THIS INFORMATION IS BELIEVED TO BE CORRECT, IT IS REPRESENTED SUBJECT TO ERRORS, OMISSIONS, CHANGES OR WITHDRAWAL WITHOUT NOTICE. ALL PROPERTY INFORMATION, INCLUDING, BUT NOT LIMITED TO SQUARE FOOTAGE, ROOM COUNT, ZONING IN THE LISTING SHOULD BE VERIFIED BY YOUR OWN ATTORNEY, ARCHITECT OR ZONING EXPERT. IF YOUR PROPERTY IS CURRENTLY LISTED WITH ANOTHER REAL ESTATE BROKER, PLEASE DISREGARD THIS OFFER. IT IS NOT OUR INTENTION TO SOLICIT THE OFFERINGS OF OTHER REAL ESTATE BROKERS. WE COOPERATE WITH THEM FULLY. EQUAL HOUSING OPPORTUNITY.



National & Local Retailer Map

445 E. Main Street | East Patchogue, NY 11772



Google

Map data ©2024 Imagery ©2024 Airbus, Maxar Technologies

For More Information:

Michael G. Murphy



President | Commercial Division
Douglas Elliman Commercial - Long Island
631.834.2626
michael.murphy@elliman.com

Douglas Elliman
Commercial

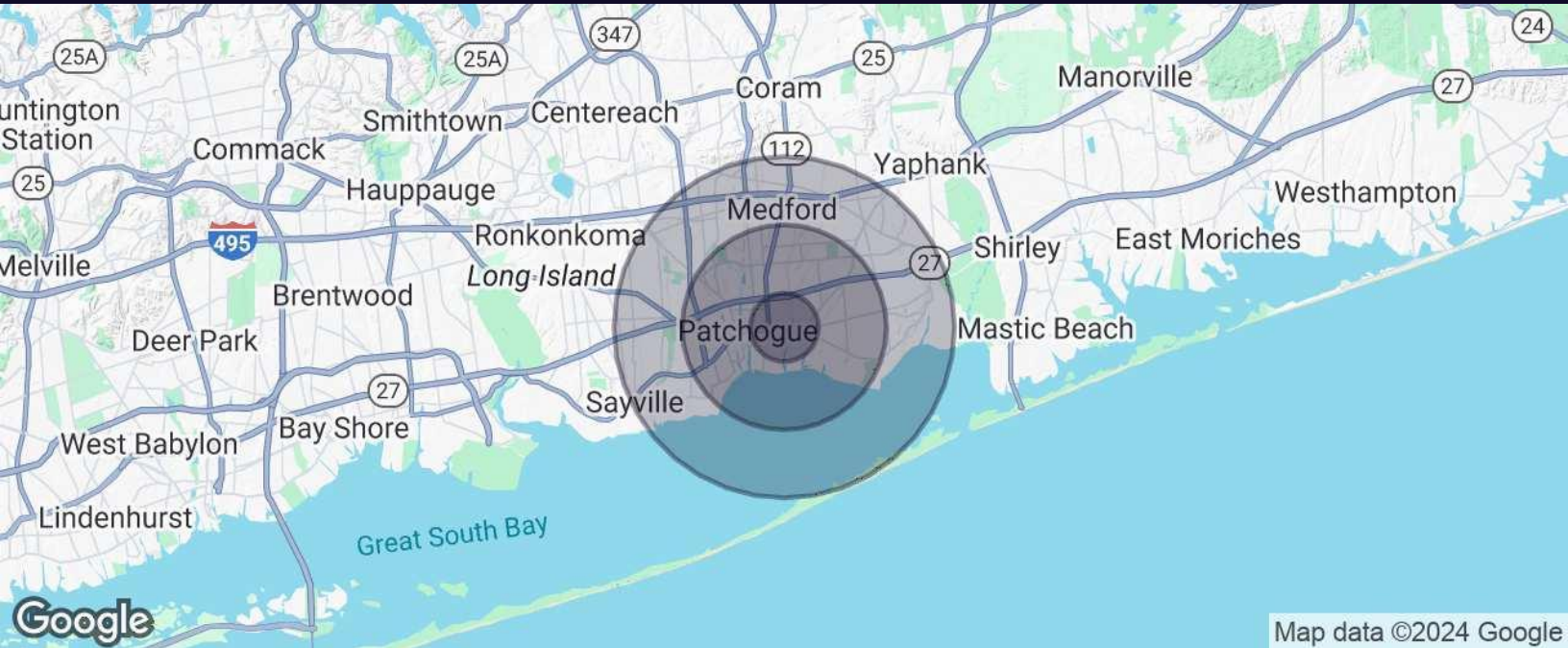
WWW.ELLIMANCOMMERCIAL.COM

THE PROPERTY CONTAINED WITHIN THIS DOCUMENT IS BEING EXCLUSIVELY REPRESENTED BY DOUGLAS ELLIMAN REAL ESTATE COMMERCIAL DIVISION, 550 SMITHTOWN BYPASS STE. 117 SMITHTOWN, NY 11787 631.858.2405 © 2023 DOUGLAS ELLIMAN COMMERCIAL OF LI, LLC. ALL MATERIAL PRESENTED HEREIN IS INTENDED FOR INFORMATION PURPOSES ONLY. WHILE THIS INFORMATION IS BELIEVED TO BE CORRECT, IT IS REPRESENTED SUBJECT TO ERRORS, OMISSIONS, CHANGES OR WITHDRAWAL WITHOUT NOTICE. ALL PROPERTY INFORMATION, INCLUDING, BUT NOT LIMITED TO SQUARE FOOTAGE, ROOM COUNT, ZONING IN THE LISTING SHOULD BE VERIFIED BY YOUR OWN ATTORNEY, ARCHITECT OR ZONING EXPERT. IF YOUR PROPERTY IS CURRENTLY LISTED WITH ANOTHER REAL ESTATE BROKER, PLEASE DISREGARD THIS OFFER. IT IS NOT OUR INTENTION TO SOLICIT THE OFFERINGS OF OTHER REAL ESTATE BROKERS. WE COOPERATE WITH THEM FULLY. EQUAL HOUSING OPPORTUNITY.



Demographics Map & Data

445 E. Main Street | East Patchogue, NY 11772



Map data ©2024 Google

Population	1 Mile	3 Miles	5 Miles
Total Population	8,954	64,808	142,571
Average Age	36.2	37.3	37.9
Average Age (Male)	32.5	35.2	36.9
Average Age (Female)	41.8	40.0	39.2

Households & Income	1 Mile	3 Miles	5 Miles
Total Households	3,543	23,967	50,537
# of Persons per HH	2.5	2.7	2.8
Average HH Income	\$71,761	\$79,144	\$88,441
Average House Value	\$324,796	\$355,567	\$403,471

For More Information:



Michael G. Murphy

President | Commercial Division
Douglas Elliman Commercial - Long Island
631.834.2626
michael.murphy@elliman.com



WWW.ELLIMANCOMMERCIAL.COM

THE PROPERTY CONTAINED WITHIN THIS DOCUMENT IS BEING EXCLUSIVELY REPRESENTED BY DOUGLAS ELLIMAN REAL ESTATE COMMERCIAL DIVISION, 550 SMITHTOWN BYPASS STE. 117 SMITHTOWN, NY 11787 631.858.2405 © 2023 DOUGLAS ELLIMAN COMMERCIAL OF LI, LLC. ALL MATERIAL PRESENTED HEREIN IS INTENDED FOR INFORMATION PURPOSES ONLY. WHILE THIS INFORMATION IS BELIEVED TO BE CORRECT, IT IS REPRESENTED SUBJECT TO ERRORS, OMISSIONS, CHANGES OR WITHDRAWAL WITHOUT NOTICE. ALL PROPERTY INFORMATION, INCLUDING, BUT NOT LIMITED TO SQUARE FOOTAGE, ROOM COUNT, ZONING IN THE LISTING SHOULD BE VERIFIED BY YOUR OWN ATTORNEY, ARCHITECT OR ZONING EXPERT. IF YOUR PROPERTY IS CURRENTLY LISTED WITH ANOTHER REAL ESTATE BROKER, PLEASE DISREGARD THIS OFFER. IT IS NOT OUR INTENTION TO SOLICIT THE OFFERINGS OF OTHER REAL ESTATE BROKERS. WE COOPERATE WITH THEM FULLY. EQUAL HOUSING OPPORTUNITY.



For more information on this listing contact:

Michael G. Murphy



Michael G. Murphy

President | Commercial Division

michael.murphy@elliman.com

Direct: 631.834.2626 | **Cell:** 631.834.2626

Professional Background

Michael G. Murphy is the President & Head of Operations of Douglas Elliman Real Estate's Commercial Division, a leading full-service commercial brokerage firm. In addition to his role overseeing the day-to-day operations of the multibillion-dollar Commercial office, Michael also sits on the Senior Executive Advisory Board at Elliman, one of the leading real estate firms in the world. In his innumerable roles Michael is responsible for strategic planning and the company's day-to-day commercial operations that involves overseeing more than 100 offices spanning across the five boroughs. He plays a pivotal role in the recruitment of top talent, business development, and integrating the company's real estate brokerage activities with project management and facilities management.

A trendsetter in the world of real estate, Murphy is responsible for the inception of a full-service commercial real estate division at Douglas Elliman. In 2003, it was Michael who shaped the idea of a commercial unit to take advantage of the referrals that were filtering out of the company's residential offices. Since its commencement, Michael has developed an exceptional referral base of loyal clients, completing in excess of a billion dollars in real estate transactions which include Hotels, Shopping centers, Triple Net opportunities, Land deals, several noteworthy office/ industrial leases and retail developments with national chains. Having represented some of the most recognized names in the Real Estate and Business arena, Michael brings a depth of knowledge to the Commercial Division that is second to none.

A self-starter, creative problem solver and an expert negotiator, Murphy has proven to be a trailblazer and is an iconic figure in the business industry. Prior to joining Douglas Elliman, he was a managing principal at Global Commercial Realty. He also co-owned and operated the "Dublin" Group, a chain of successful restaurant/bars throughout the Long Island area including Dublin Down, Dublin Over, Dublin Deck, Planet Dublin, Murphy's Law, Venue 56, as well as his newest venture in the hospitality, Industry Prato 850, A Gastro Pub, and hot spot in Commack.

In 2007 Michael was a recipient of Long Islands Prestigious 40 under 40 award, which is given to outstanding members of the business community who are under the age of 40. For well over a decade Michael has consistently been honored with numerous TOP Broker awards such as the Pinnacle Award, Platinum award and has consecutively been presented with the Award for # 1 Commercial Broker for GCI and Transactions within the Elliman network. Michael was also the Recipient of the CoStar Power Broker Award in 2016, 2017, 2018 and 2019 and was honored as Long Island Business News Top Commercial Broker for 2017. Michael has an extensive academic background receiving his MBA in International Business from Franklin College, in Lugano Switzerland where he was selected from an elite group of scholars to participate in a one year accelerated program after first receiving his B.A. from CW Post Long Island University, where he played football on scholarship.

His professional affiliations include Commercial Industry Brokers Society of Long Island (CIBS), International Council of Shopping Centers (ICSC), Long Island Commercial Network (LICN) and LIBI. He participates in several philanthropic activities donating both time and financial aid to various charities including the Sunshine Kids, American Heart Association, Toys for Tots, St. Jude, All Inclusive Lacrosse and more.

For More Information:

Michael G. Murphy

President | Commercial Division

Douglas Elliman Commercial - Long Island

631.834.2626

michael.murphy@elliman.com



WWW.ELLIMANCOMMERCIAL.COM

THE PROPERTY CONTAINED WITHIN THIS DOCUMENT IS BEING EXCLUSIVELY REPRESENTED BY DOUGLAS ELLIMAN REAL ESTATE COMMERCIAL DIVISION, 550 SMITHTOWN BYPASS STE. 117 SMITHTOWN, NY 11787 631.858.2405 © 2023 DOUGLAS ELLIMAN COMMERCIAL OF LI, LLC. ALL MATERIAL PRESENTED HEREIN IS INTENDED FOR INFORMATION PURPOSES ONLY. WHILE THIS INFORMATION IS BELIEVED TO BE CORRECT, IT IS REPRESENTED SUBJECT TO ERRORS, OMISSIONS, CHANGES OR WITHDRAWAL WITHOUT NOTICE. ALL PROPERTY INFORMATION, INCLUDING, BUT NOT LIMITED TO SQUARE FOOTAGE, ROOM COUNT, ZONING IN THE LISTING SHOULD BE VERIFIED BY YOUR OWN ATTORNEY, ARCHITECT OR ZONING EXPERT. IF YOUR PROPERTY IS CURRENTLY LISTED WITH ANOTHER REAL ESTATE BROKER, PLEASE DISREGARD THIS OFFER. IT IS NOT OUR INTENTION TO SOLICIT THE OFFERINGS OF OTHER REAL ESTATE BROKERS. WE COOPERATE WITH THEM FULLY. EQUAL HOUSING OPPORTUNITY.

WE ARE COMMERCIAL REAL ESTATE

Commercial real estate involves more than just property listings. To get the most effective results, you need to partner with a company that has a full complement of services and an in-depth team of professionals to help with all of your needs. Douglas Elliman's team of commercial real estate experts is committed to unrivaled performance standards when working with tenants, investors, purchasers and owners. We represent all major property types including office, industrial, retail, apartment and land. We treat each assignment with commitment and focus, from a single transaction in a local market to national and multi-market assignments. We help negotiate contracts, coordinate construction and provide both property management as well as ongoing advisory service to satisfy your changing real estate needs. Our breadth of market knowledge, unprecedented network and use of innovative technology extend to all types of property transactions.

For More Information:



Michael G. Murphy
President | Commercial Division
631.834.2626
michael.murphy@elliman.com

Office: 631.858.2405
Fax: 631.543.0851
550 Smithtown Bypass
Smithtown, NY 11787