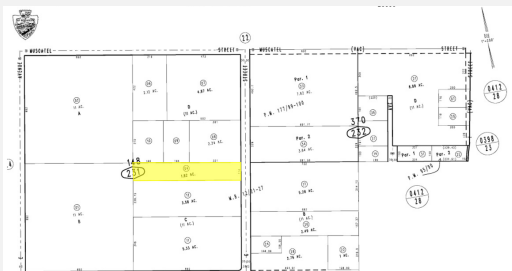




# G Ave

## Hesperia, CA 92345



**ASKING**  
\$210,000



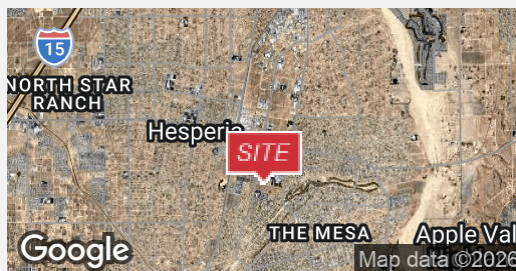
**SIZE**  
±1.82 ACRES



**ZONING**  
MDR



**APN**  
0410-231-04



### Property Description

- Located in the Heart of Hesperia
- Demand For Local Housing
- Surrounded by Desirable Amenities
- Water, Sewer, and Power Available at Site
- 

**Mehdi Mostaedi, ALC**  
Executive Managing Director  
760.780.4210  
mmostaedi@naicapital.com  
CalDRE #01392527

**Jonathan Pollak**  
Senior Associate  
760.780.4217  
jpollak@naicapital.com  
CalDRE #02106603

**NAI Capital**  
13911 Park Ave #206  
Victorville, CA 92392  
760.780.4210  
info@naicapital.com