

Available for Sale or Lease | Land

CORNHUSKER POINTE



Cornhusker & Fort Crook, Bellevue, NE

CORNHUSKER ROAD PARCEL

- 50,000 SF - junior box retail
- 20,000 SF - grocer
- 9,000 SF - retail building
- 2 pad sites
- Great Southern Bank (existing)
- Excellent visibility from Cornhusker Road

FORT CROOK ROAD PARCEL

- 14.56 acres of multi-family land
- Within close proximity to Highway 75, Bellevue University & Offutt Airforce Base
- Site is located within Bellevue's retail hub surrounded by many local and national retailers

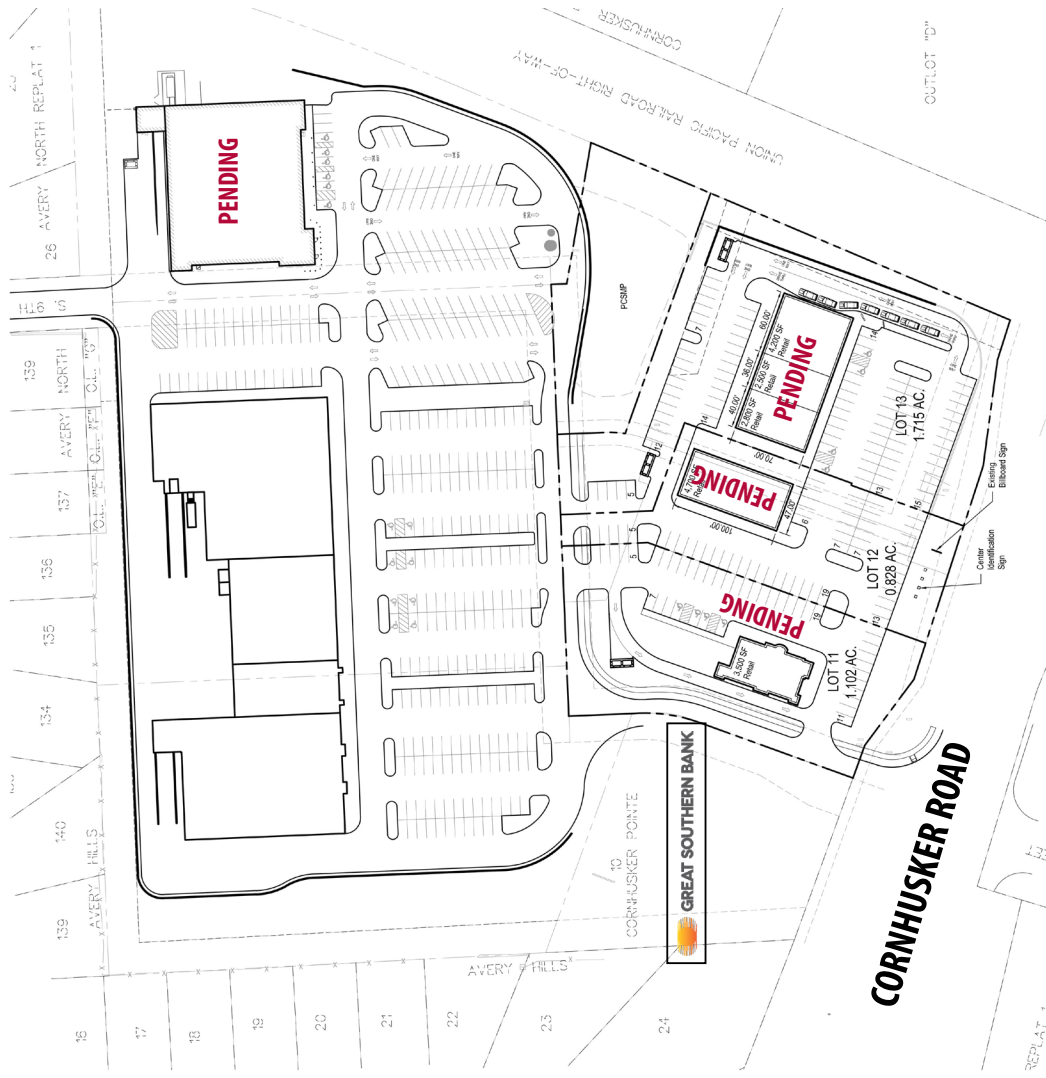
DEMOGRAPHICS

	1 Mile	3 Mile	5 Mile
Population	8,701	51,804	124,966
Average HH Income	\$64,887	\$65,536	\$67,254
Daytime Population	8,701	51,804	124,996



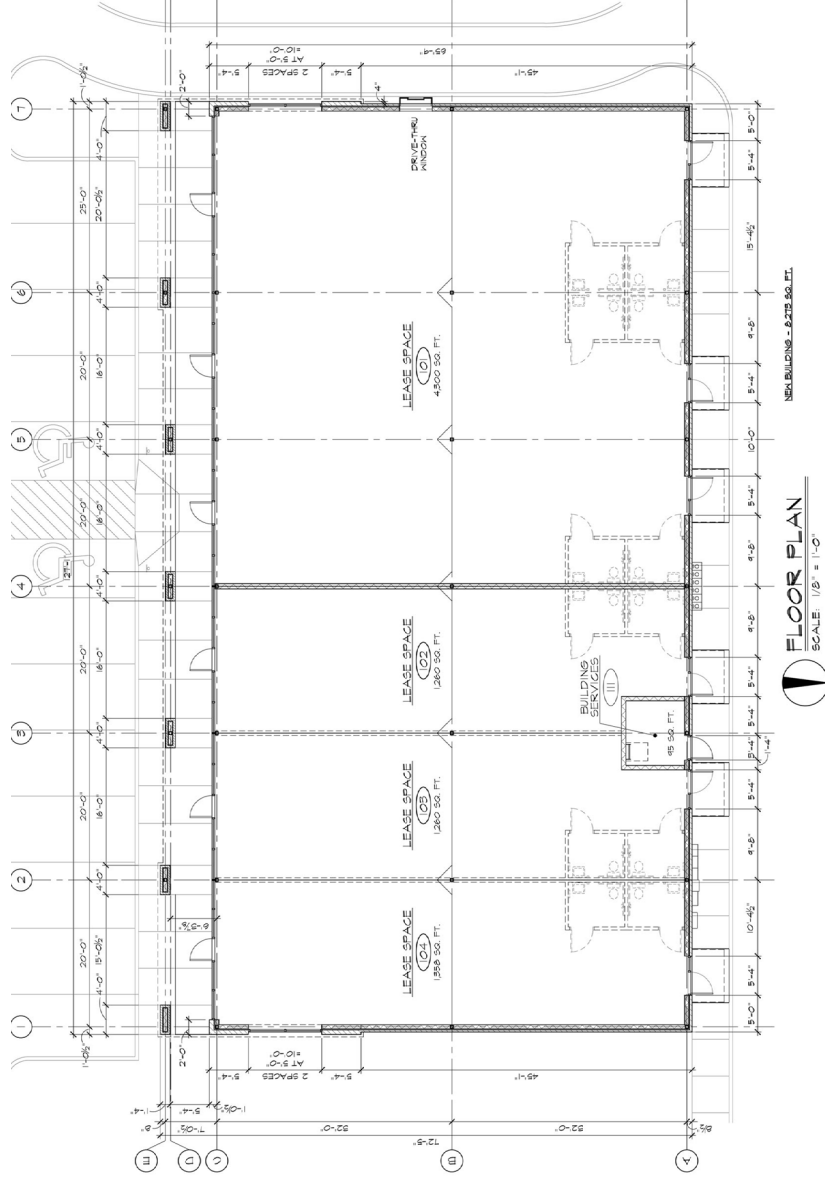
12910 PIERCE STREET, SUITE 110 | OMAHA, NEBRASKA
402.933.3663 | WWW.LOCKWOODDEV.COM

Cornhusker Pointe, Bellevue, NE



Size	Building Use	Sale Price/Lease Rate
Lot 1 3.44 AC	Grocer	Pending
Lot 2 5.75 AC	Jr Box Retail	Contact Agent
Lot 10 1.296 AC	Great Southern Bank - Existing	
Lot 11 1.102 AC	Pad Site	Contact Agent
Lot 12 0.828 AC	Pad Site	Contact Agent
Lot 13 1.71 AC	Retail Strip	Contact Agent

Cornhusker Pointe, Bellevue, NE



Cornhusker Pointe, Bellevue, NE

