

1330 SE Federal Hwy, Stuart, FL 34994

1ST FLOOR  
OFFICE  
BUILDING



ALBERT BROWN  
Sales Associate  
T: 772.631.7989  
E: [albert@albertbrownre.com](mailto:albert@albertbrownre.com)

1,830 SF

Stuart, FL

# EXECUTIVE SUMMARY

1330 SE FEDERAL HWY, STUART, FL 34994 | 1ST FLOOR OFFICE BUILDING

## SPECS

**Building Size:** 1,830 SF - 1ST FLOOR  
**Zoning:** Office  
**Price:** \$23 Per SF Modified Gross

### Key Features:

- **Prominent Exposure:** Enjoy prime exposure along US Highway 1, ensuring maximum visibility to drive traffic and enhance your brand presence.
- **Turnkey Convenience:** Transition seamlessly into your new workspace with its move-in ready condition, saving you time and resources.
- **Functional Layout:** Benefit from four private offices, a dedicated conference room, and a secure vault that can be tailored to your specific needs.
- **Comfort and Control:** Each office is equipped with individually controlled HVAC systems, ensuring personalized comfort for you and your team.
- **Convenience Amenities:** Take advantage of the well-equipped kitchen/break room, two restrooms, and ample parking facilities for your convenience and comfort.

## PROPERTY OVERVIEW

Introducing an exceptional leasing opportunity in Stuart! Discover this magnificent 1,830 sq ft office space situated along the US Highway 1, offering unparalleled visibility for your business. Step into a contemporary environment, meticulously crafted and move-in ready to accommodate a diverse range of businesses. With its professional ambiance, this space is thoughtfully designed to elevate your operations.



**ALBERT BROWN**  
Sales Associate  
T: 772.631.7989  
E: [albert@albertbrownre.com](mailto:albert@albertbrownre.com)

**1,830 SF** | **Stuart, FL**



**FC** FLORIDA  
COMMERCIAL  
REAL ESTATE COMPANY



**ALBERT BROWN**  
Sales Associate  
T: 772.631.7989  
E: [albert@albertbrownre.com](mailto:albert@albertbrownre.com)

**1,830 SF** | **Stuart, FL**



**FC** FLORIDA  
COMMERCIAL  
REAL ESTATE COMPANY



**ALBERT BROWN**  
Sales Associate  
T: 772.631.7989  
E: [albert@albertbrownre.com](mailto:albert@albertbrownre.com)

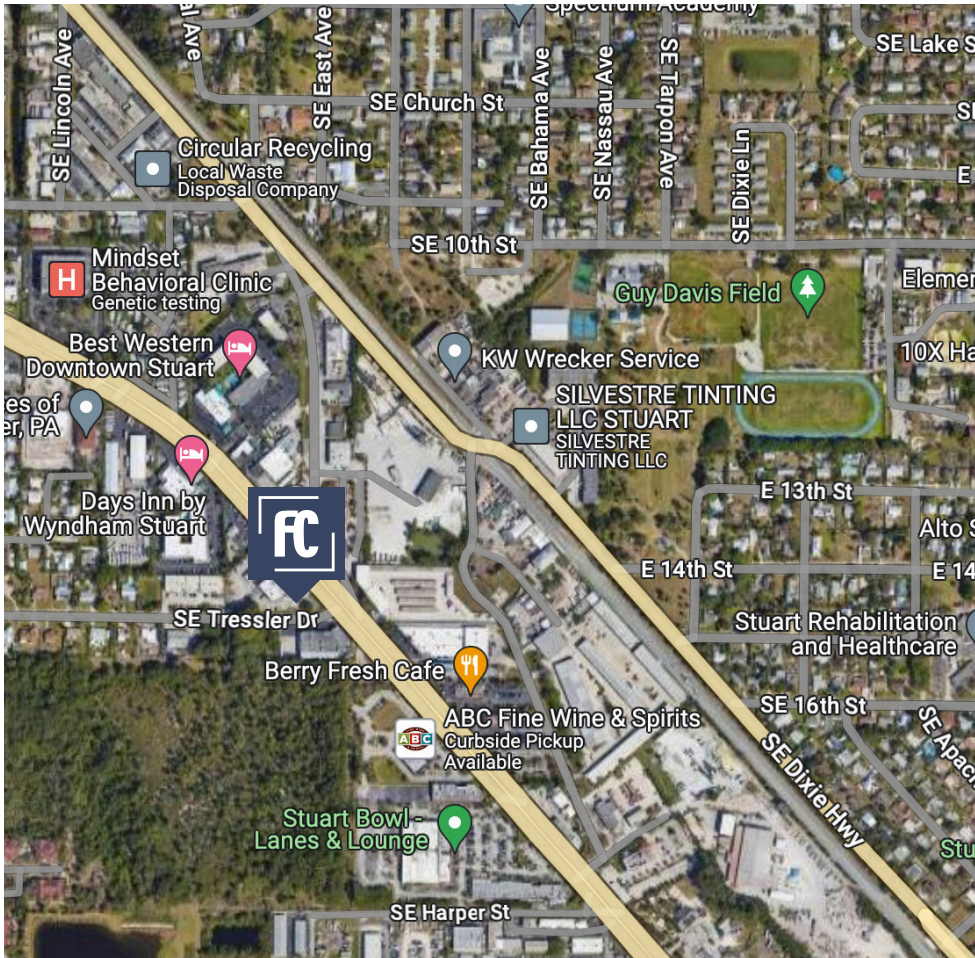
**1,830 SF** | **Stuart, FL**


309 SE Osceola Street #104 • Stuart, FL 34994 • 772.223.3646 • [florida-commercial.net](http://florida-commercial.net)

©Florida Commercial 2021 • This offering is subject to errors, prior to sale/lease, withdrawal, or change in price, terms or conditions without notice.

# EXECUTIVE SUMMARY

1330 SE FEDERAL HWY, STUART, FL 34994 | 1ST FLOOR OFFICE BUILDING



 POPULATION	1 MILE	3 MILES	5 MILES
Total population	18.6K	83.6K	128K



**ALBERT BROWN**  
Sales Associate  
T: 772.631.7989  
E: albert@albertbrownre.com

**1,830 SF | Stuart, FL**