

BORDEN REAL ESTATE



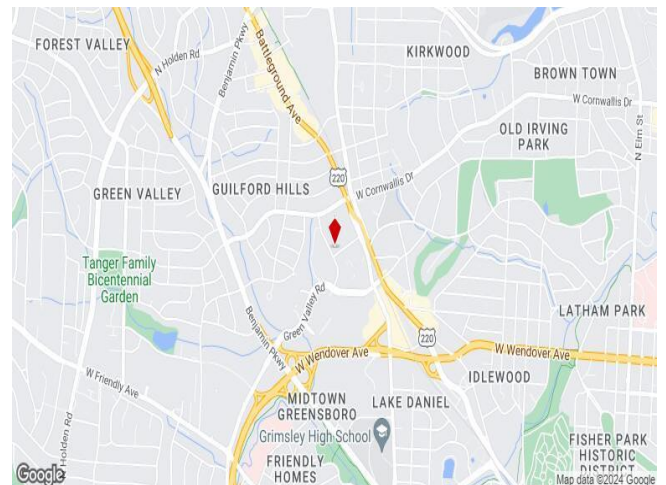
1906 Lendew Street (Office-Medical Space to Lease)

Greensboro, NC

a

Building Features:

- 6,200 RSF – Shell space available to lease
- High ceilings ready to be built out to specs
- Adjacent to an established OBGYN practice
- Separate ground floor entrance with adjacent parking available (23 parks)
-



For more information contact
Robert Lacy / Kennon Borden

Robert@bordenre.com

919-641-4647

Kennon@bordenre.com

919-602-0887

BORDEN

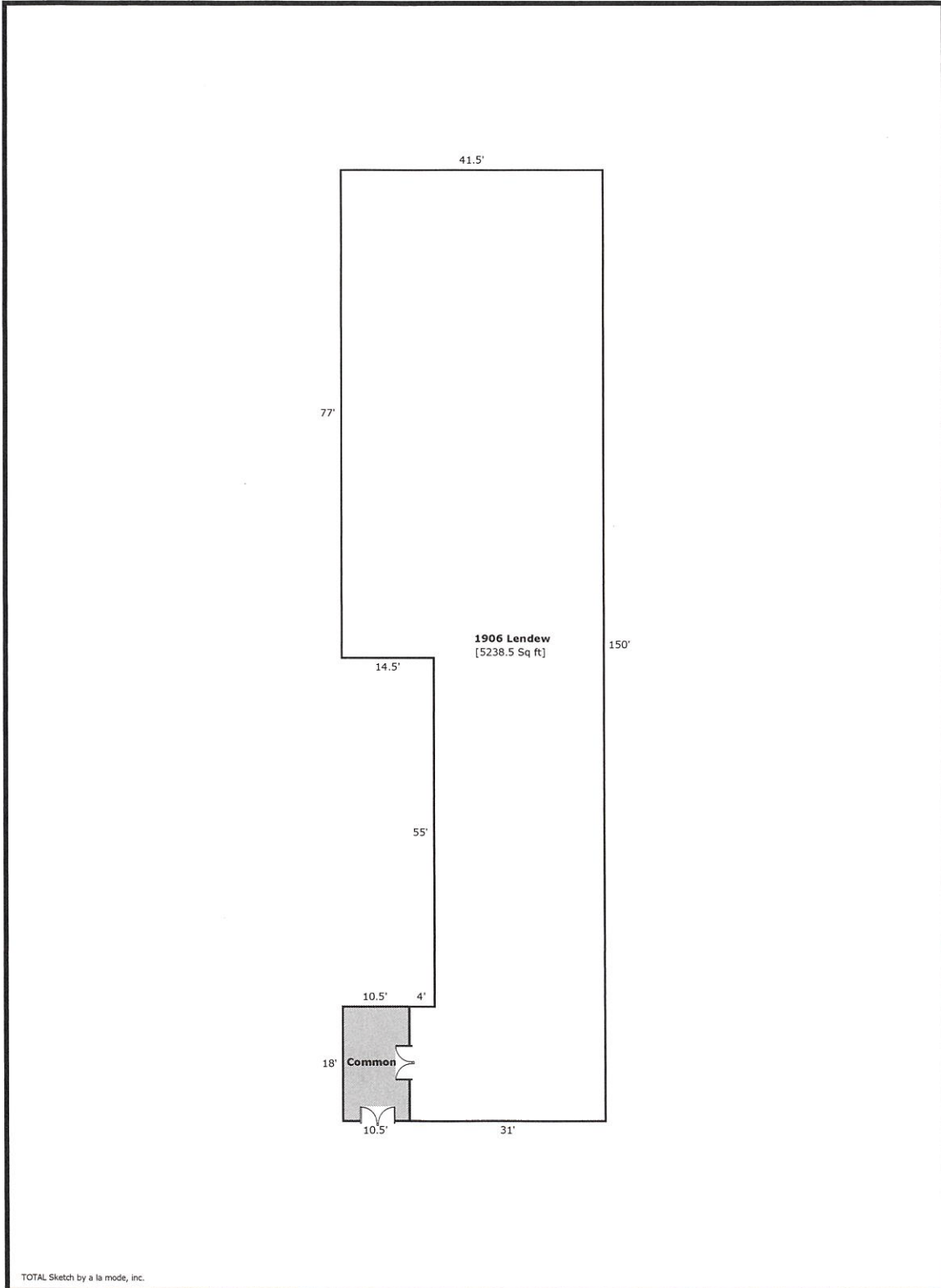
REAL ESTATE

www.bordenre.com

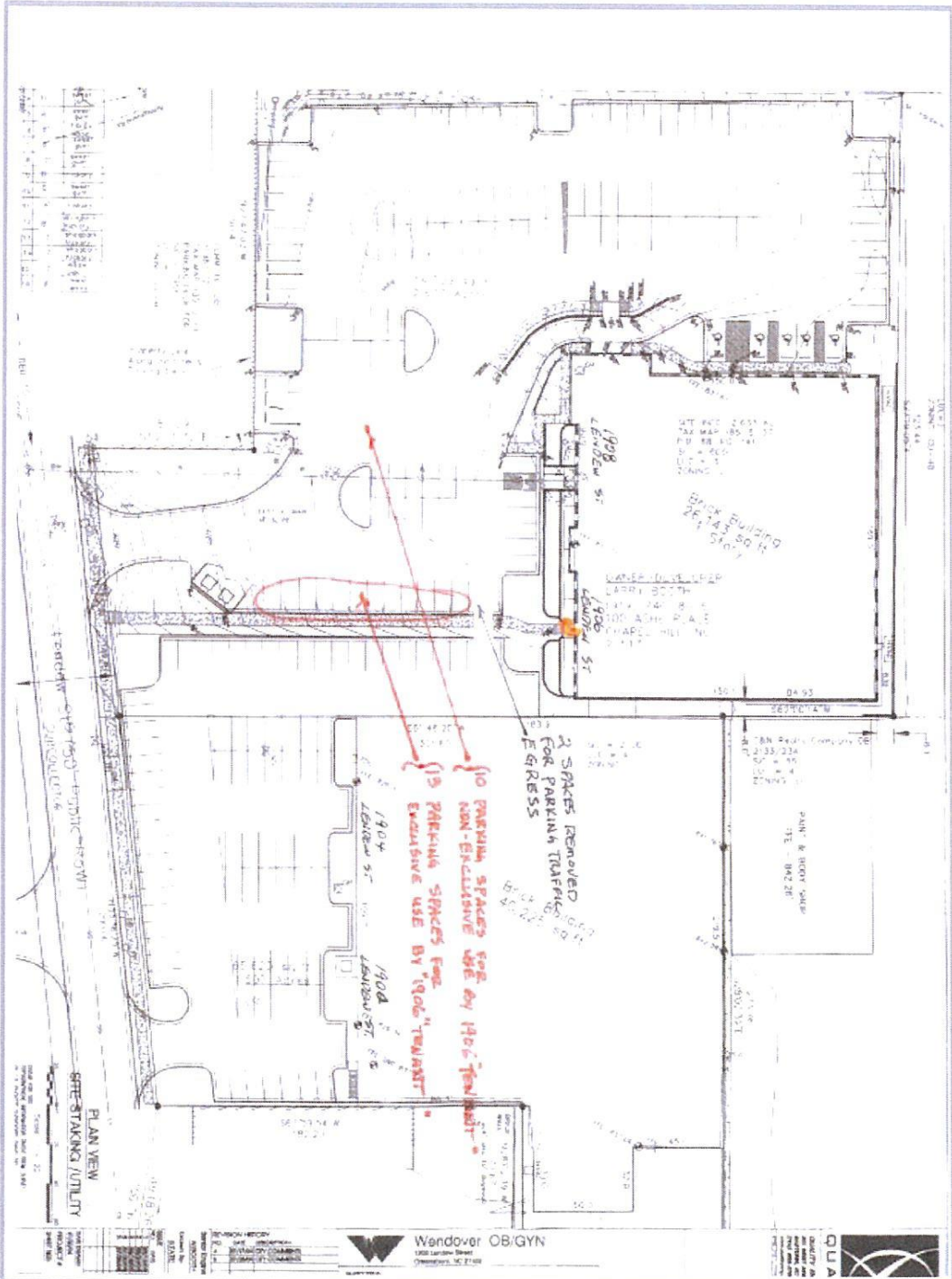
For Lease
\$18.75 NNN
TICAM \$2.70 PSF

Building Sketch (Page - 1)

Client	KENNON BORDEN				
Property Address	1906 Lendew St				
City	Greensboro	County		State	NC Zip Code 27408
Client	KENNON BORDEN				



TOTAL Sketch by a la mode, inc.



2 SPACES REMOVED FOR PARKING TRAFFIC TO EGRESS

13 PARKING SPACES FOR EXCLUSIVE USE BY 1906 TENANT

BRICK BUILDING 40,727 SQ FT

BRICK BUILDING 241,540 SQ FT

LATEST 1906 1906 LARRY 2007 414 24 8 4 100 ACHS PLANT 3 CHAPPEL HILL NC 2117

PARK & RIDE GARAGE 11E - 1842 28'

PLAN VIEW
SITE STACKING UTILITY