



**Keegan & Coppin**  
COMPANY, INC.

FOR LEASE

150 PROFESSIONAL CENTER DRIVE  
ROHNERT PARK, CA

**WAREHOUSE / OFFICE / SHOWROOM**  
**SUITE A - PROMOTIONAL PRICING**



Go beyond broker.

PRESENTED BY:

**KEVIN DORAN, PARTNER**  
LIC # 01704987 (707) 528-1400, EXT 270  
[KDORAN@KEEGANCOPPIN.COM](mailto:KDORAN@KEEGANCOPPIN.COM)

**MIKE FLITNER, PARTNER**  
LIC # 00840890 (707) 528-1400, EXT 239  
[MFLITNER@KEEGANCOPPIN.COM](mailto:MFLITNER@KEEGANCOPPIN.COM)





# PROPERTY DETAILS



150 PROFESSIONAL CENTER DR.  
ROHNERT PARK, CA

**WAREHOUSE/OFFICE/  
SHOWROOM SPACE**

## PROPERTY INFORMATION

### HIGHLIGHTS

- Suite A: 2,488+/- SF
- Suite B: 6,380+/- SF
- Suite G: 1,200+/- SF
- Contiguous up to 10,068+/- SF
- Approximately 16'-18' clear-height in warehouse area
- Great glass-line with multiple offices
- Pure warehouse units can be created with some demolition
- Great location with easy access to Hwy 101
- Glass storefront and roll-up truck door for each unit

### DESCRIPTION OF PREMISES

Premiere office/industrial flex project in Rohnert Park, Sonoma County. Strategically located in the central Rohnert Park corridor, consists of office/warehouse space with suites ranging in sizes from 2,488-10,068 rsf. The building and parking lot are well maintained and professionally managed.

### LEASE TERMS

**SUITE A: \$1.00 psf Gross**

**SUITES B & G: \$1.25 + CAM psf Modified Gross**



#### PRESENTED BY:

KEVIN DORAN, PARTNER  
KEEGAN & COPPIN CO., INC.  
LIC # 01704987 (707) 528-1400, EXT 270  
KDORAN@KEEGANCOPPIN.COM

MIKE FLITNER, PARTNER  
KEEGAN & COPPIN CO., INC.  
LIC # 00840890 (707) 528-1400, EXT 239  
MFLITNER@KEEGANCOPPIN.COM



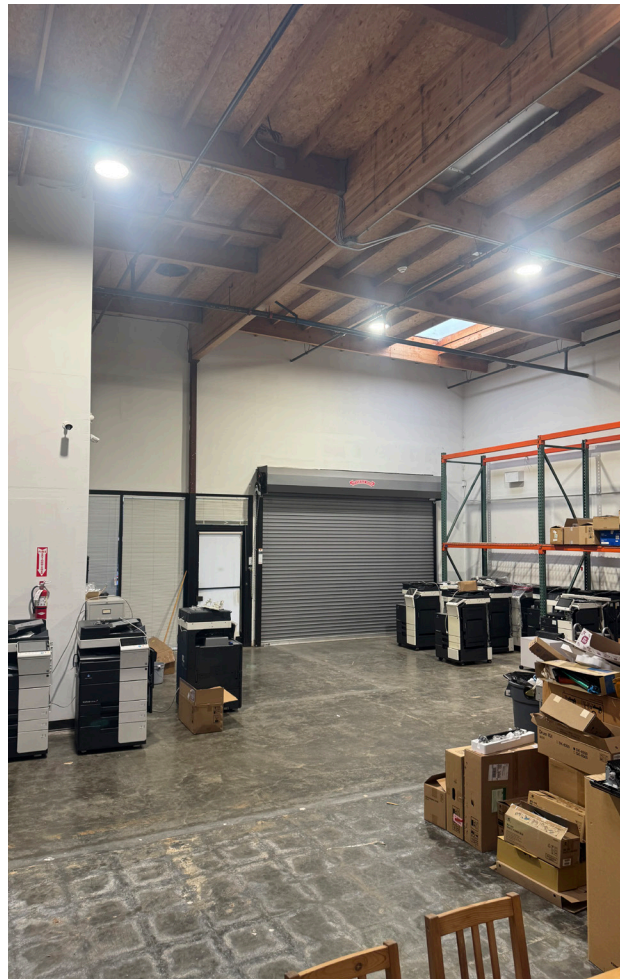
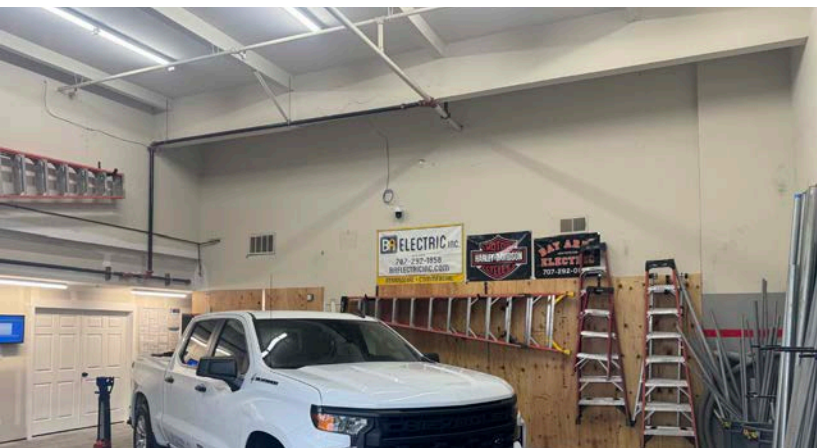


## PROPERTY PHOTOS



150 PROFESSIONAL CENTER DR.  
ROHNERT PARK, CA

**WAREHOUSE/OFFICE/  
SHOWROOM SPACE**



### PRESENTED BY:

KEVIN DORAN, PARTNER  
KEEGAN & COPPIN CO., INC.  
LIC # 01704987 (707) 528-1400, EXT 270  
KDORAN@KEEGANCOPPIN.COM

MIKE FLITNER, PARTNER  
KEEGAN & COPPIN CO., INC.  
LIC # 00840890 (707) 528-1400, EXT 239  
MFLITNER@KEEGANCOPPIN.COM





## PROPERTY PHOTOS



150 PROFESSIONAL CENTER DR.  
ROHNERT PARK, CA

**WAREHOUSE/OFFICE/  
SHOWROOM SPACE**



### PRESENTED BY:

KEVIN DORAN, PARTNER  
KEEGAN & COPPIN CO., INC.  
LIC # 01704987 (707) 528-1400, EXT 270  
KDORAN@KEEGANCOPPIN.COM

MIKE FLITNER, PARTNER  
KEEGAN & COPPIN CO., INC.  
LIC # 00840890 (707) 528-1400, EXT 239  
MFLITNER@KEEGANCOPPIN.COM





# PROPERTY AERIAL



150 PROFESSIONAL CENTER DR.  
ROHNERT PARK, CA

**WAREHOUSE/OFFICE/  
SHOWROOM SPACE**



**PRESENTED BY:**

KEVIN DORAN, PARTNER  
KEEGAN & COPPIN CO., INC.  
LIC # 01704987 (707) 528-1400, EXT 270  
KDORAN@KEEGANCOPPIN.COM

MIKE FLITNER, PARTNER  
KEEGAN & COPPIN CO., INC.  
LIC # 00840890 (707) 528-1400, EXT 239  
MFLITNER@KEEGANCOPPIN.COM

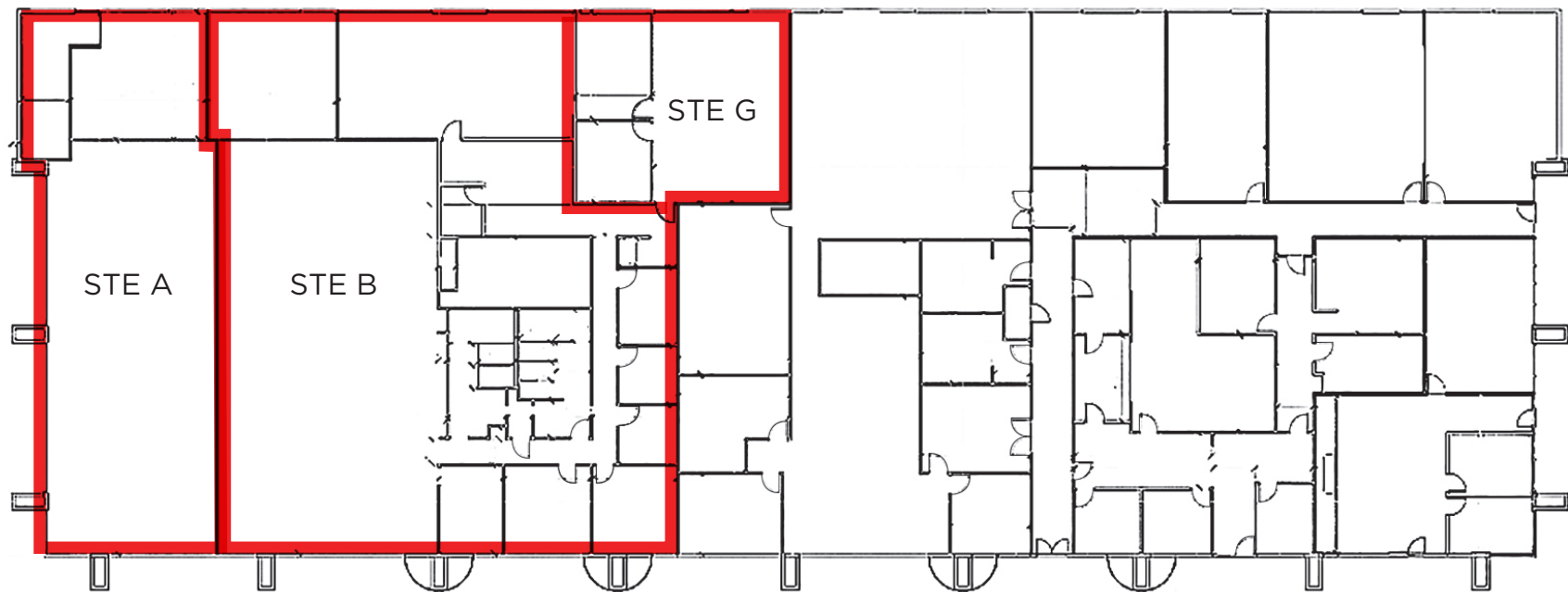


# FLOOR PLAN



150 PROFESSIONAL CENTER DR.  
ROHNERT PARK, CA

WAREHOUSE/OFFICE/  
SHOWROOM SPACE



 AVAILABLE

**PRESENTED BY:**

KEVIN DORAN, PARTNER  
KEEGAN & COPPIN CO., INC.  
LIC # 01704987 (707) 528-1400, EXT 270  
KDORAN@KEEGANCOPPIN.COM

MIKE FLITNER, PARTNER  
KEEGAN & COPPIN CO., INC.  
LIC # 00840890 (707) 528-1400, EXT 239  
MFLITNER@KEEGANCOPPIN.COM

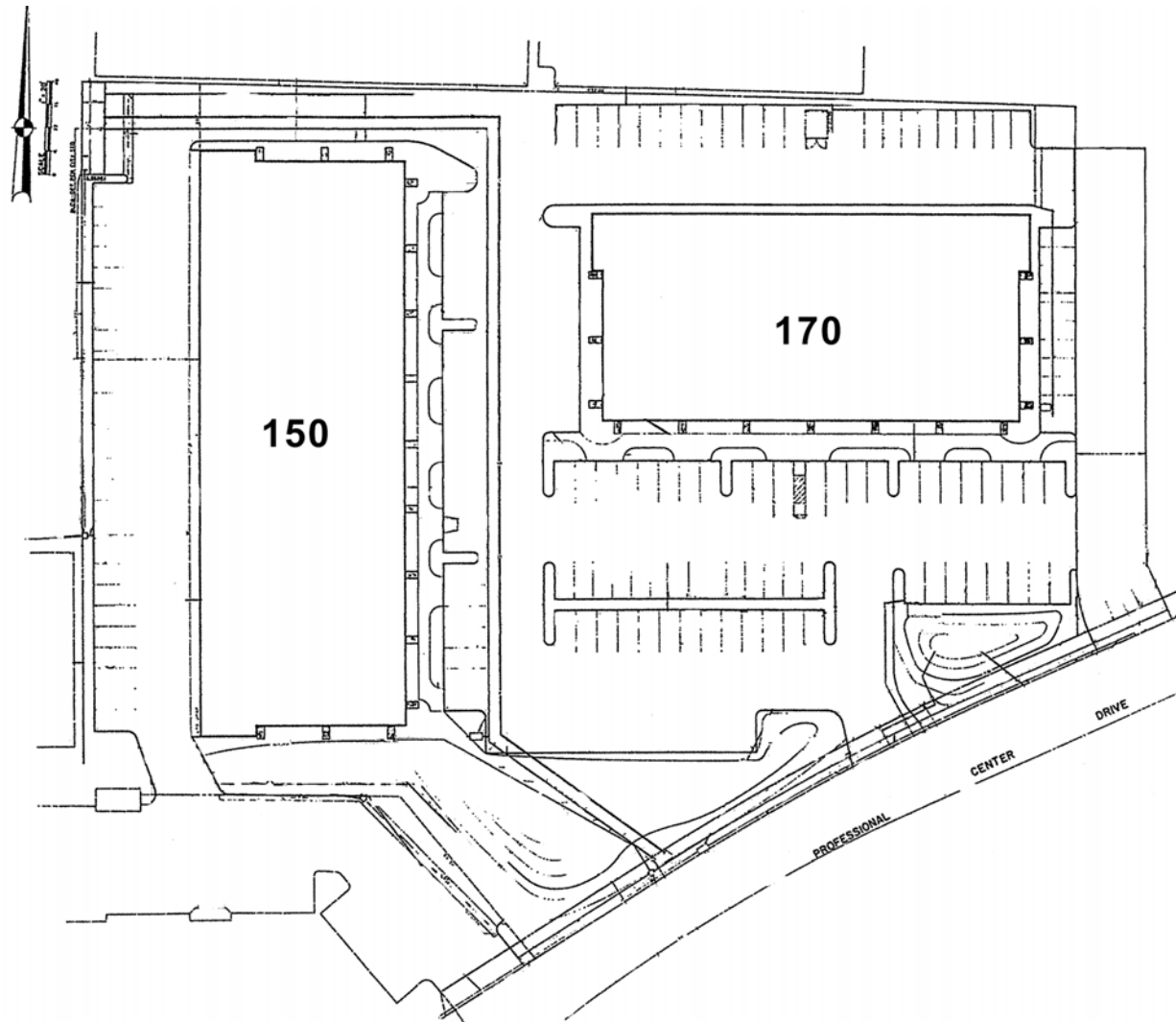


# SITE PLAN



150 PROFESSIONAL CENTER DR.  
ROHNERT PARK, CA

**WAREHOUSE/OFFICE/  
SHOWROOM SPACE**



**PRESENTED BY:**

KEVIN DORAN, PARTNER  
KEEGAN & COPPIN CO., INC.  
LIC # 01704987 (707) 528-1400, EXT 270  
KDORAN@KEEGANCOPPIN.COM

MIKE FLITNER, PARTNER  
KEEGAN & COPPIN CO., INC.  
LIC # 00840890 (707) 528-1400, EXT 239  
MFLITNER@KEEGANCOPPIN.COM





# AREA DESCRIPTION



150 PROFESSIONAL CENTER DR.  
ROHNERT PARK, CA

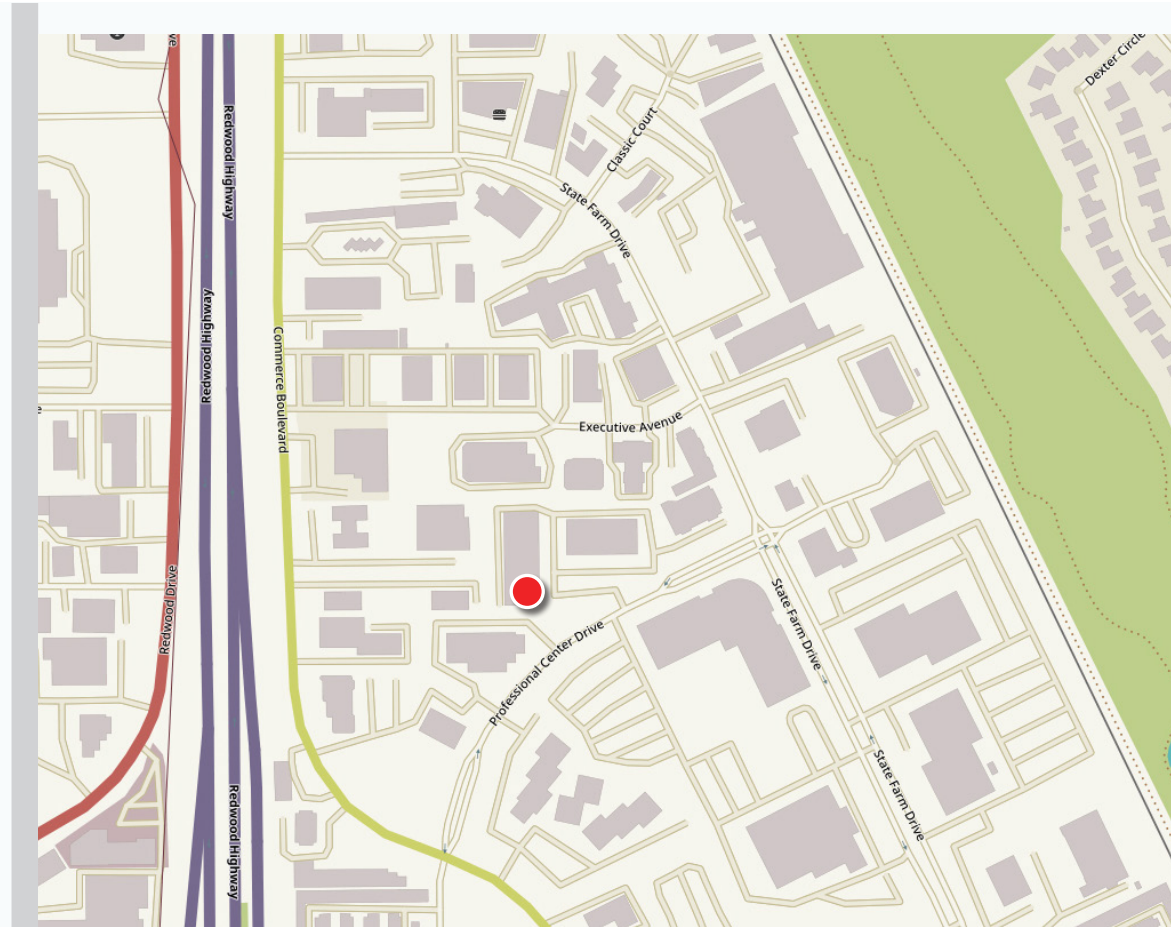
**WAREHOUSE/OFFICE/  
SHOWROOM SPACE**

## DESCRIPTION OF AREA

150 Professional Center Drive is located in Rohnert Park, California, one of the largest economic hubs of Sonoma County, California. This strategic location, just off the intersection of Rohnert Park Expressway and Highway 101, is approximately 1 hour north of the Golden Gate Bridge and offers convenient access to San Francisco, the East Bay, and other points within the Bay Area. The City of Rohnert Park is located in the Santa Rosa valley roughly 50 miles north of San Francisco along Highway 101 in the southern part of Sonoma County.

## TRANSPORTATION ACCESS

- Easy access to Highway 101
- SMART Train & other public transportation



### PRESENTED BY:

KEVIN DORAN, PARTNER  
KEEGAN & COPPIN CO., INC.  
LIC # 01704987 (707) 528-1400, EXT 270  
KDORAN@KEEGANCOPPIN.COM

MIKE FLITNER, PARTNER  
KEEGAN & COPPIN CO., INC.  
LIC # 00840890 (707) 528-1400, EXT 239  
MFLITNER@KEEGANCOPPIN.COM



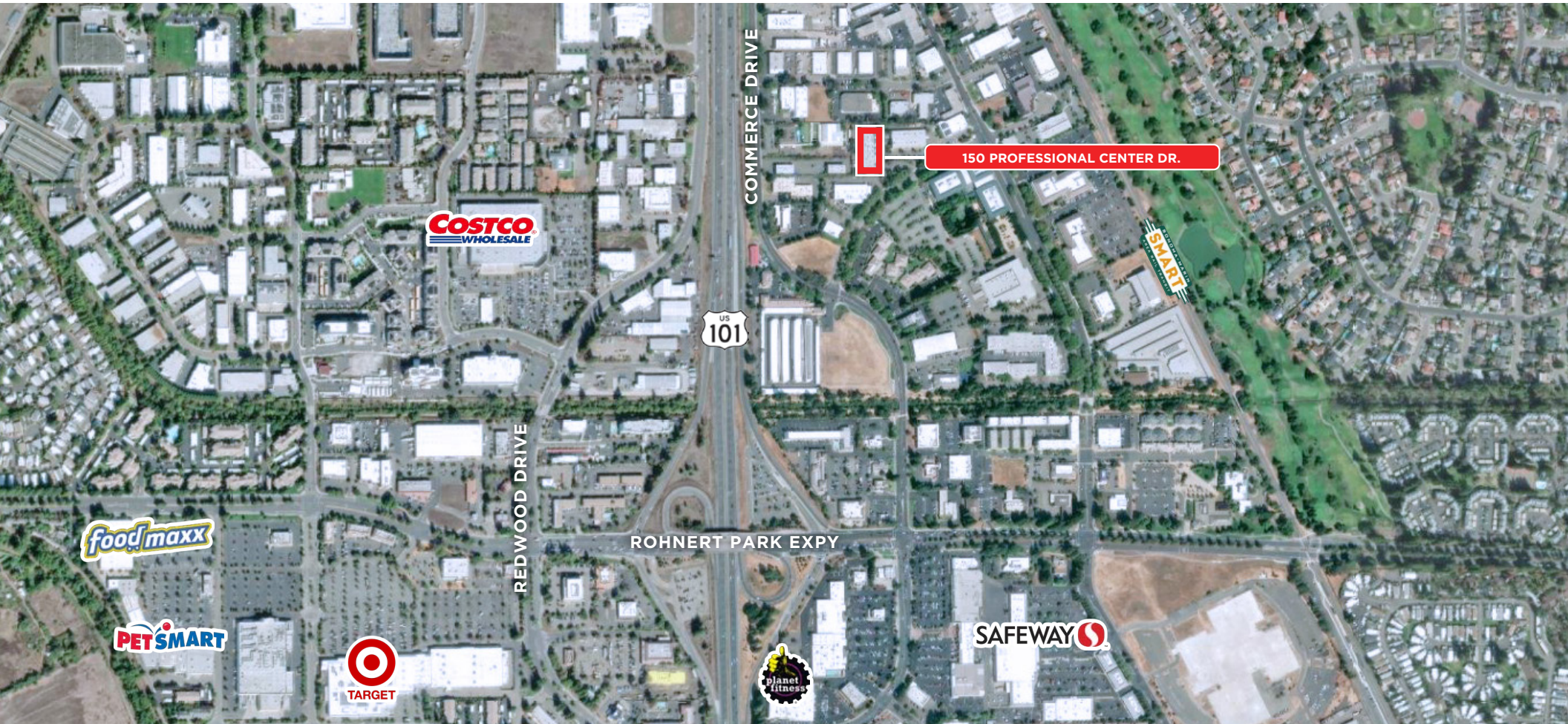


## VICINITY MAP



150 PROFESSIONAL CENTER DR.  
ROHNERT PARK, CA

WAREHOUSE/OFFICE/  
SHOWROOM SPACE



Keegan & Coppin Co., Inc.  
1355 North Dutton Avenue  
Santa Rosa, CA 95401  
[www.keegancoppin.com](http://www.keegancoppin.com)  
(707) 528-1400

The above information, while not guaranteed, has been secured from sources we believe to be reliable. Submitted subject to error, change or withdrawal. An interested party should verify the status of the property and the information herein.

REPRESENTED BY:

**KEVIN DORAN, PARTNER**  
LIC # 01704987 (707) 528-1400, EXT 270  
[KDORAN@KEEGANCOPPIN.COM](mailto:KDORAN@KEEGANCOPPIN.COM)

**MIKE FLITNER, PARTNER**  
LIC # 00840890 (707) 528-1400, EXT 239  
[MFLITNER@KEEGANCOPPIN.COM](mailto:MFLITNER@KEEGANCOPPIN.COM)