

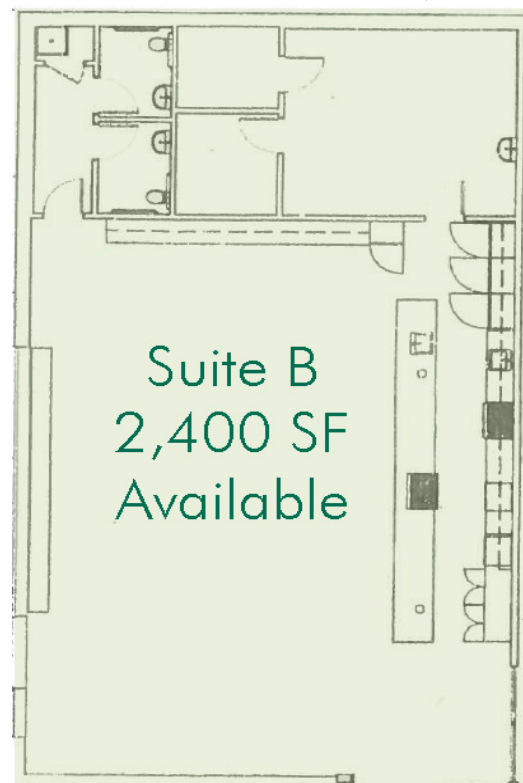
FOR SUBLEASE BROOKGREEN TOWN CENTER

RETAIL

PROPERTY INFO

2,400 SF of end cap space available next to the main entrance to Gold's Gym. Brookgreen Town Center is located off of Coleman Boulevard which sees 34,200 VPD.

- + Lease rate: \$25/PSF plus utilities and TICAM
- + Available 9/1/2019 when Gold's Gym opens (space has been used as pre-sale area for Gold's Gym.)
- + Excellent location in Mount Pleasant. Great for retail, restaurant, and office/service related retail.
- + Other tenants within Brookgreen Town Center include, Mozzo Deli, Starbucks, Gaea Yoga, Saussy Burbank and Verde
- + Abundance of surface parking

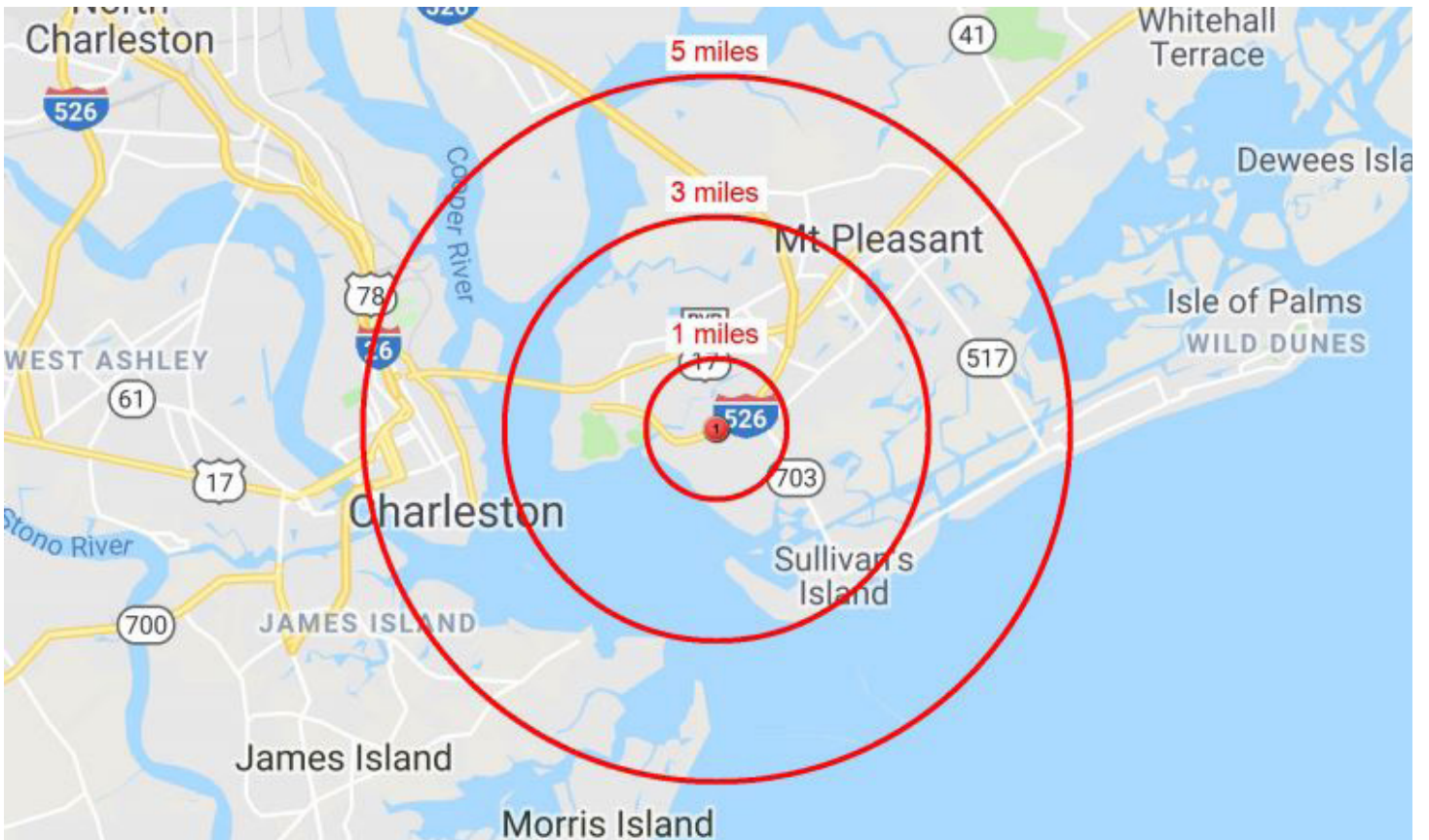


FOR SUBLEASE BROOKGREEN TOWN CENTER

RETAIL

2019 Estimated Demographics

	1 Mile	3 Miles	5 Miles
Population	9,898	36,400	97,587
Average Household Income	\$108,688	\$128,677	\$118,443
Average Age	43.0	42.9	37.9
Average Housing Value	\$594,868	\$637,937	\$632,508
Housing Units	4,665	16,096	42,306



CONTACT US

Joyce Beach

First Vice President
+1 843 577 1158
joyce.beach@cbre.com

Joseph Purze

Associate
+1 843 720 3545
joseph.purze@cbre.com

730 COLEMAN BLVD, MT. PLEASANT, SC 29464

www.cbre.us/charlestonsc

CBRE

FOR SUBLEASE BROOKGREEN TOWN CENTER

RETAIL



© 2019 CBRE, Inc. All rights reserved. This information has been obtained from sources believed reliable, but has not been verified for accuracy or completeness. You should conduct a careful, independent investigation of the property and verify all information. Any reliance on this information is solely at your own risk. CBRE and the CBRE logo are service marks of CBRE, Inc. All other marks displayed on this document are the property of their respective owners, and the use of such logos does not imply any affiliation with or endorsement of CBRE. Photos herein are the property of their respective owners. Use of these images without the express written consent of the owner is prohibited.