

NEWTON MANUFACTURING CAMPUS

900 S. Meridian | 810 and 831 S. Columbus | Newton, KS 67114

FOR LEASE
CONTACT BROKER



Offered by: **Bradley Tidemann, SIOR** | 316-650-8853 | btidemann@weigand.com

J.P. Weigand & Sons, Inc. Commercial | 150 N. Market Wichita, KS 67202 | WeigandCommercial.com

NEWTON MANUFACTURING CAMPUS

900 S. Meridian | 810 and 831 S. Columbus | Newton, KS 67114

**FOR LEASE
CONTACT BROKER**



ENTIRE SITE SIZE
1,311,156± SF (30.10± A)

TOTAL BUILDING SIZE
280,040± SF

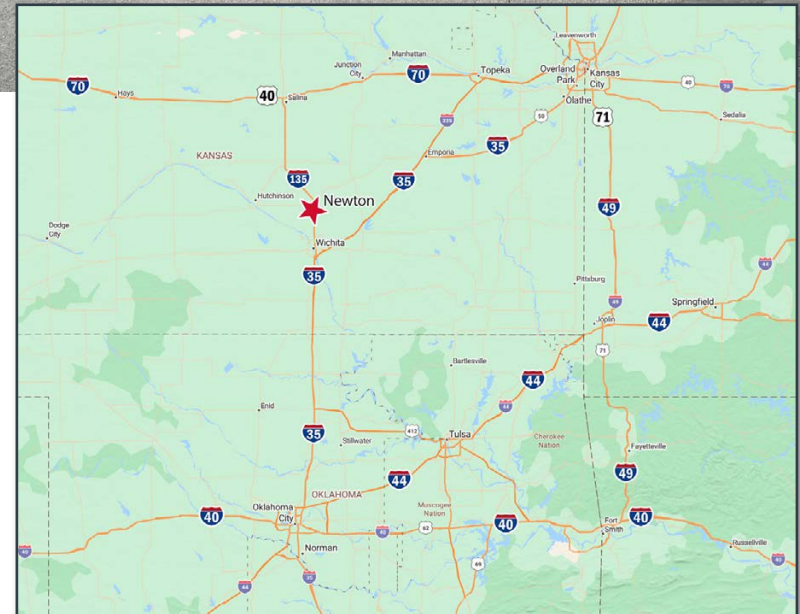
AVAILABLE SPACE
83,450± SF - 280,040± SF

ZONING
I-2 GENERAL INDUSTRIAL

2023 TAXES
GENERALS: \$186,552.58 | SPECIALS: \$14,860.00

PROPERTY HIGHLIGHTS

- Manufacturing campus available for lease in Newton, KS.
- Consists of four main buildings, compressor building, lamination building, and covered storage building.
- Rail access.
- Easily accessible to I-135 and US Hwy. 50.



Offered by: **Bradley Tidemann, SIOR** | 316-650-8853 | btidemann@weigand.com

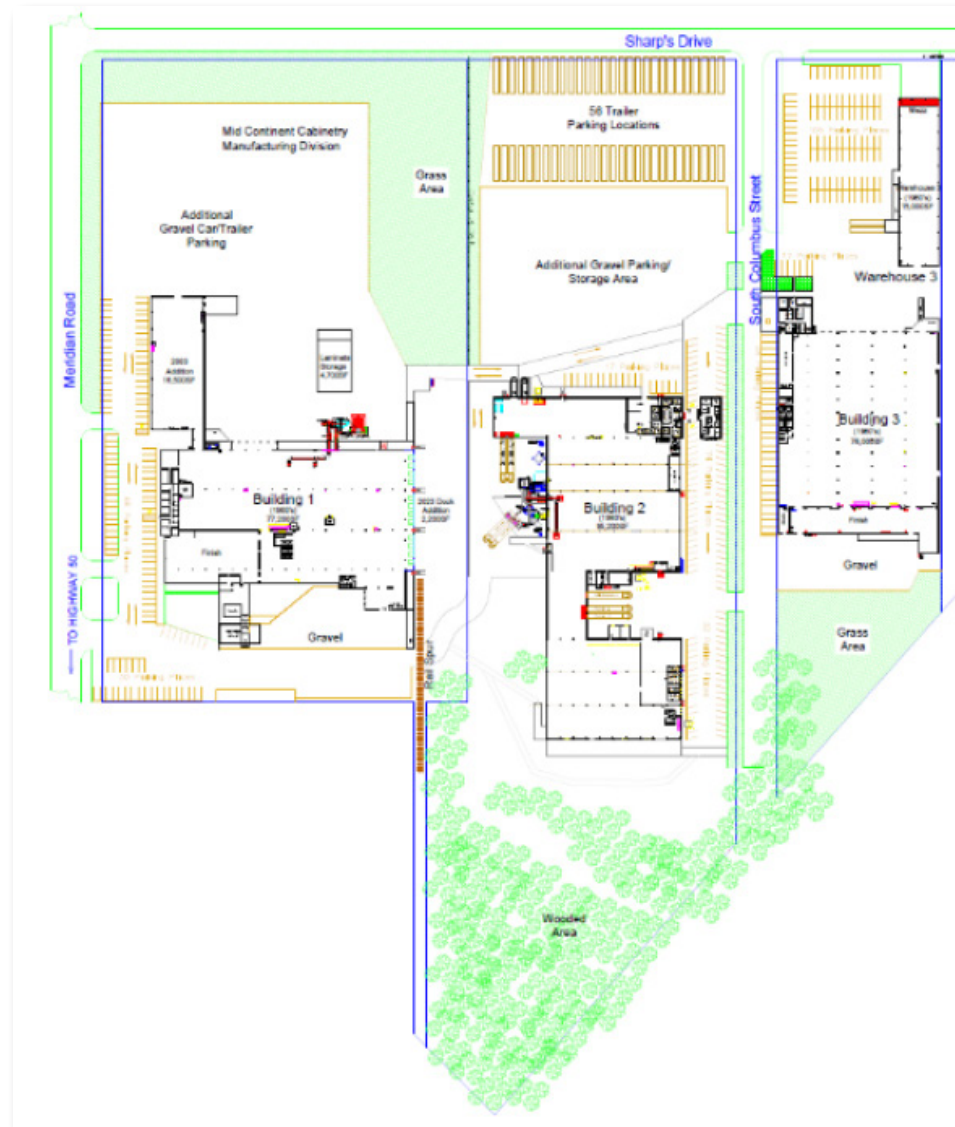
J.P. Weigand & Sons, Inc. Commercial | 150 N. Market Wichita, KS 67202 | WeigandCommercial.com

NEWTON MANUFACTURING CAMPUS

900 S. Meridian | 810 and 831 S. Columbus | Newton, KS 67114

FOR LEASE
CONTACT BROKER

SITE PLAN



Offered by: **Bradley Tidemann, SIOR** | 316-650-8853 | btidemann@weigand.com

J.P. Weigand & Sons, Inc. Commercial | 150 N. Market Wichita, KS 67202 | WeigandCommercial.com

NEWTON MANUFACTURING CAMPUS

900 S. Meridian | 810 and 831 S. Columbus | Newton, KS 67114

FOR LEASE
CONTACT BROKER

MAIN CAMPUS: BUILDING 1 900 S. MERIDIAN

BUILDING SIZE
83,450 SF

YEAR BUILT
1950, 1956, 2003, 2009

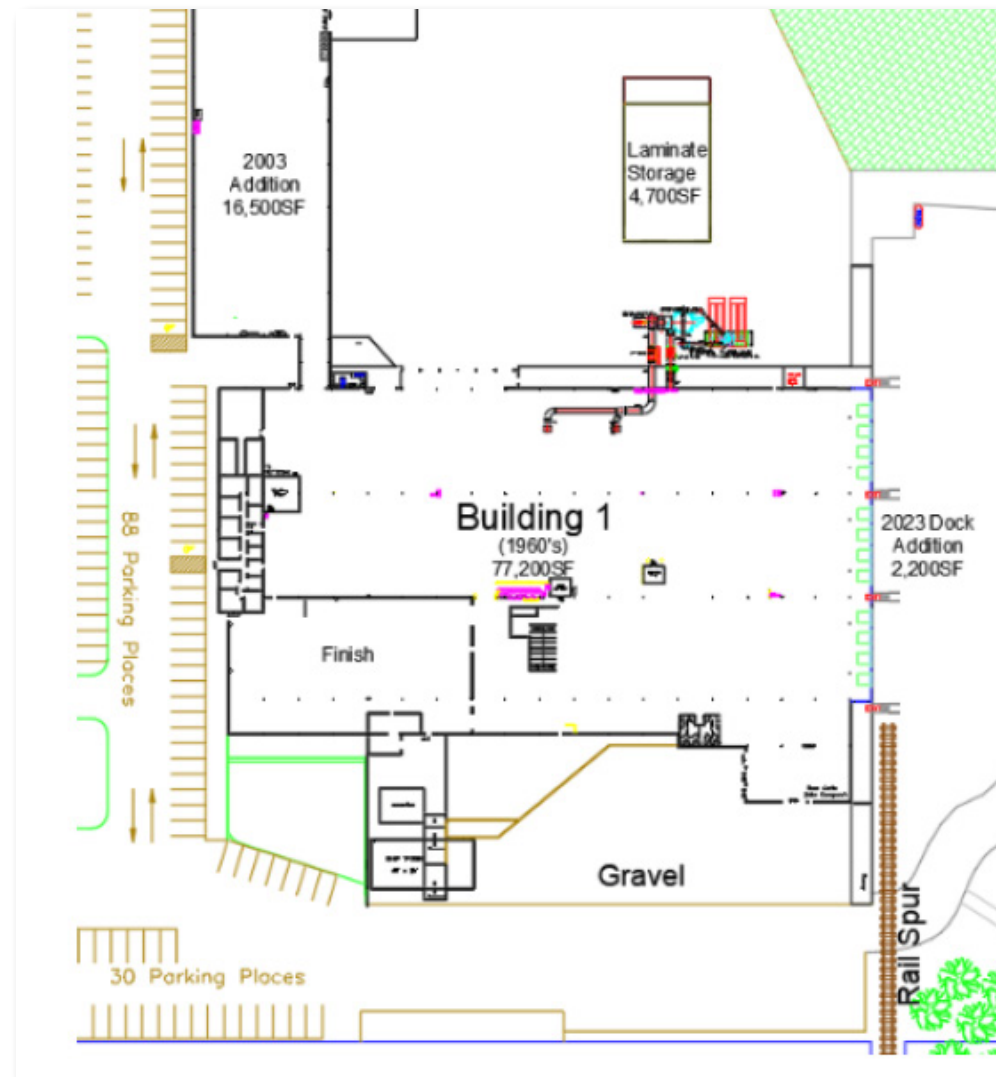
CEILING HEIGHT
9' - 18'

CONSTRUCTION
METAL ON WOOD
METAL ON STEEL
STUD

DOCK DOORS
MULTIPLE
(3 WITH RAMPS)

SPRINKLED
WET - PORTION

PARKING
118± SPACES



Offered by: **Bradley Tidemann, SIOR** | 316-650-8853 | btidemann@weigand.com

NEWTON MANUFACTURING CAMPUS

900 S. Meridian | 810 and 831 S. Columbus | Newton, KS 67114

**FOR LEASE
CONTACT BROKER**

MAIN CAMPUS: BUILDING 2 831 S. COLUMBUS

BUILDING SIZE
105,666± SF

YEAR BUILT
1950, 1960

CEILING HEIGHT
9' - 13'

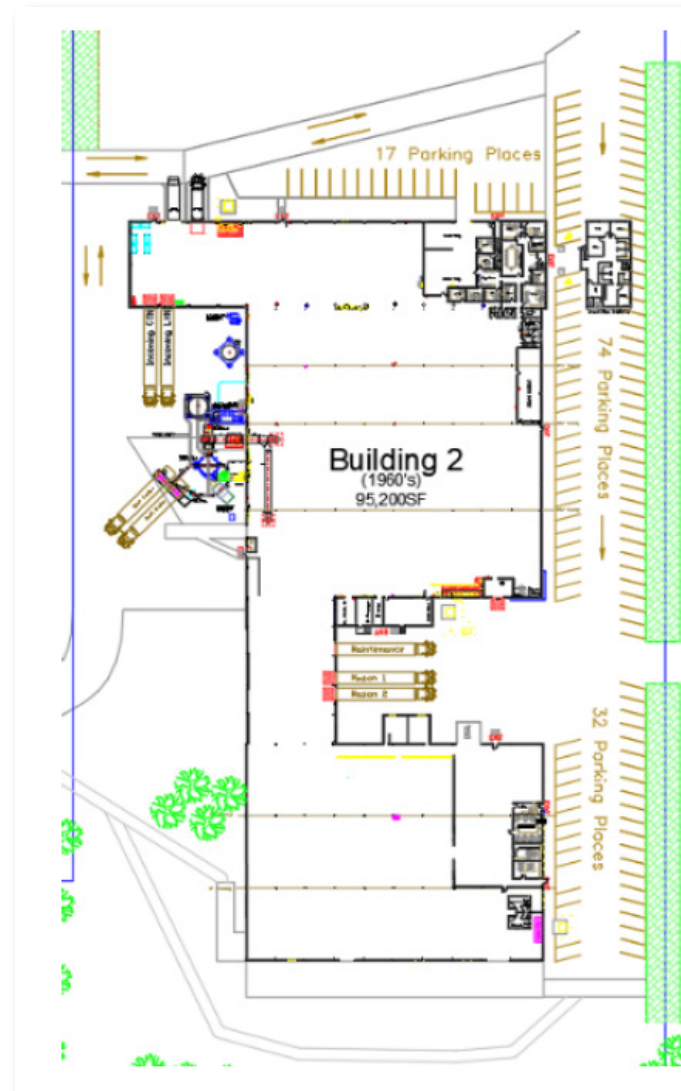
CONSTRUCTION
METAL ON WOOD
METAL ON STEEL
CONCRETE BLOCK

OVERHEAD DOORS
2

SPRINKLED
WET - PORTION

DOCK DOORS
MULTIPLE
(3 WITH RAMPS)

PARKING
120± SPACES



Offered by: **Bradley Tidemann, SIOR** | 316-650-8853 | btidemann@weigand.com

NEWTON MANUFACTURING CAMPUS

900 S. Meridian | 810 and 831 S. Columbus | Newton, KS 67114

FOR LEASE
CONTACT BROKER

MAIN CAMPUS: BUILDING 3 810 S. COLUMBUS

BUILDING SIZE
90,924± SF

YEAR BUILT
1972

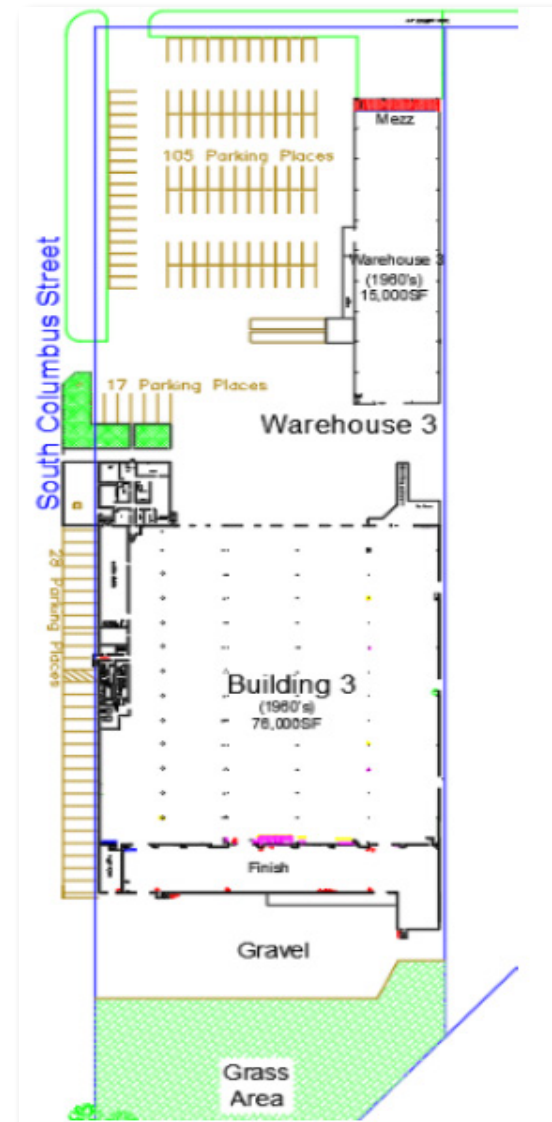
CEILING HEIGHT
12' - 18'

CONSTRUCTION
METAL ON STEEL

DOCK DOORS
MULTIPLE
(3 WITH RAMPS)

SPRINKLED
WET

PARKING
150± SPACES



Offered by: **Bradley Tidemann, SIOR** | 316-650-8853 | btidemann@weigand.com

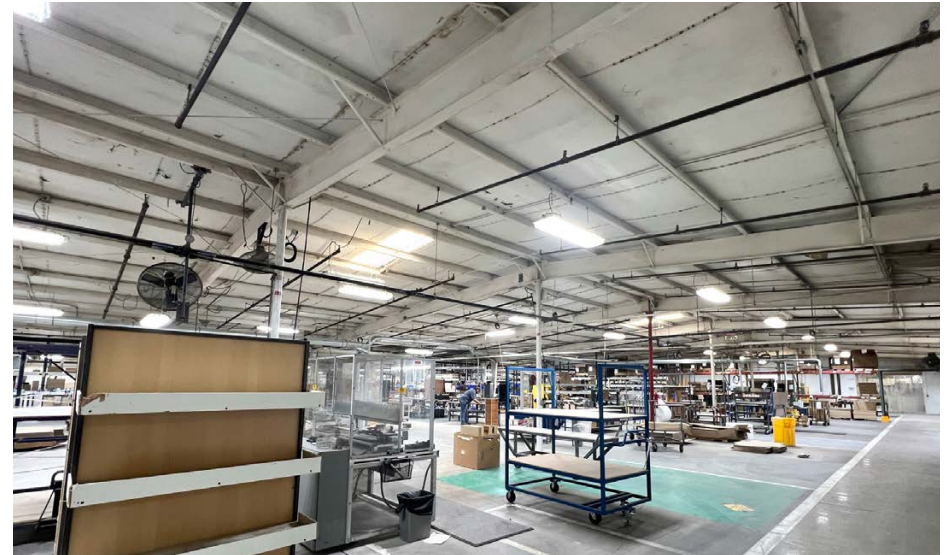
J.P. Weigand & Sons, Inc. Commercial | 150 N. Market Wichita, KS 67202 | WeigandCommercial.com



NEWTON MANUFACTURING CAMPUS

900 S. Meridian | 810 and 831 S. Columbus | Newton, KS 67114

FOR LEASE
CONTACT BROKER



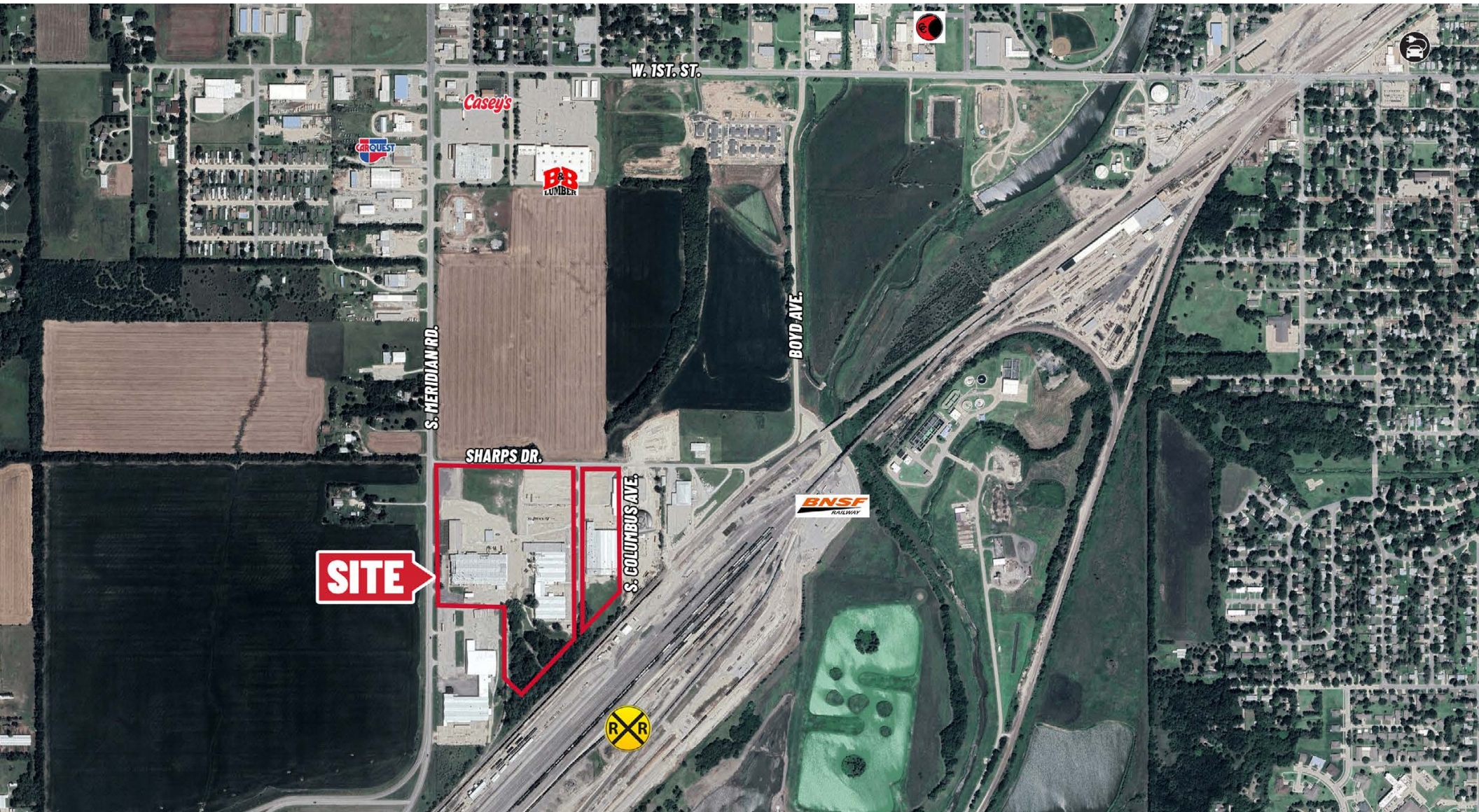
Offered by: **Bradley Tidemann, SIOR** | 316-650-8853 | btidemann@weigand.com

J.P. Weigand & Sons, Inc. Commercial | 150 N. Market Wichita, KS 67202 | WeigandCommercial.com

NEWTON MANUFACTURING CAMPUS

900 S. Meridian | 810 and 831 S. Columbus | Newton, KS 67114

FOR LEASE
CONTACT BROKER



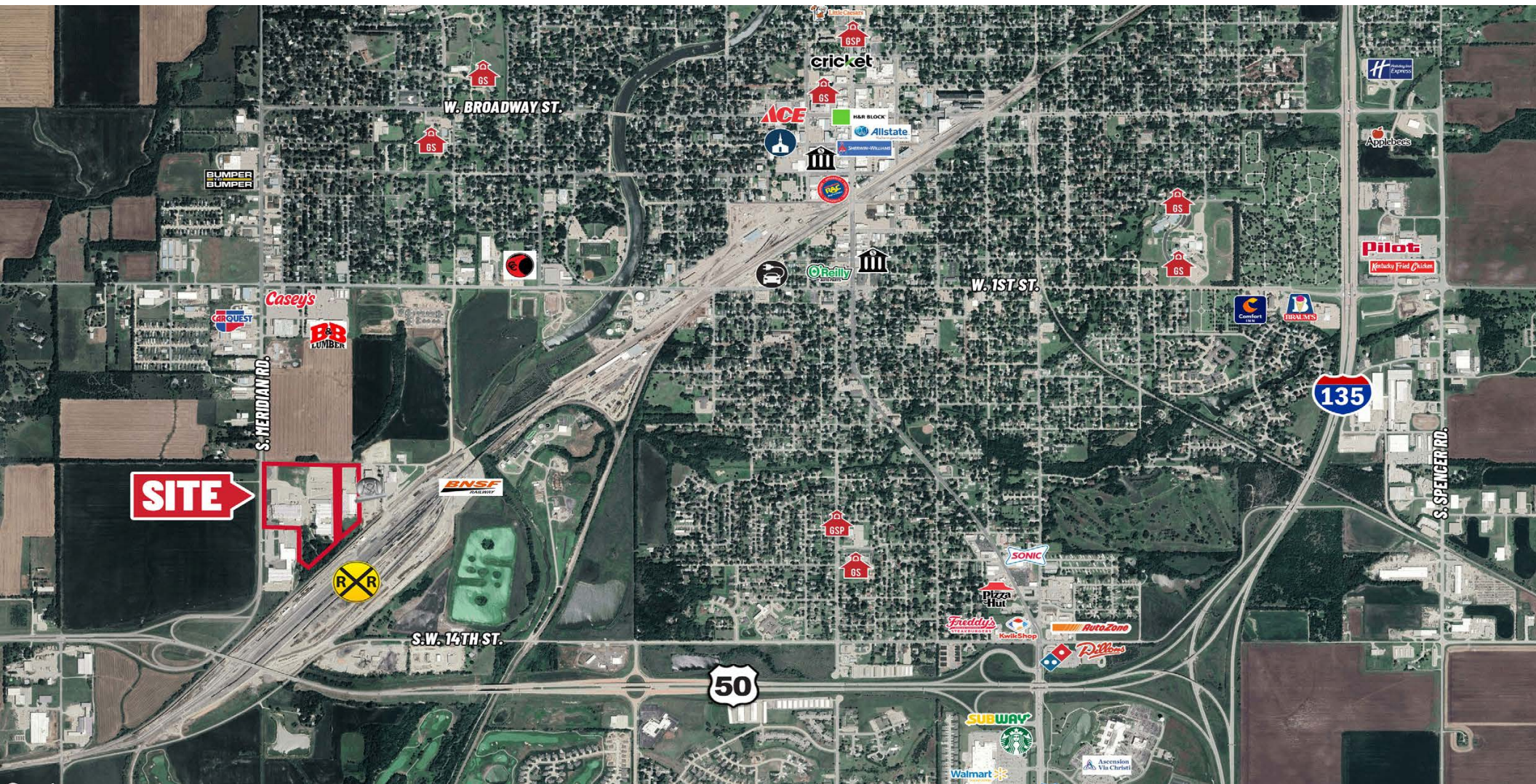
Offered by: **Bradley Tidemann, SIOR** | 316-650-8853 | btidemann@weigand.com

J.P. Weigand & Sons, Inc. Commercial | 150 N. Market Wichita, KS 67202 | WeigandCommercial.com

NEWTON MANUFACTURING CAMPUS

900 S. Meridian | 810 and 831 S. Columbus | Newton, KS 67114

FOR LEASE
CONTACT BROKER



All information furnished regarding property for sale, lease, exchange or financing is from sources deemed reliable but no guarantee is made or responsibility assumed as to its accuracy or completeness and you are advised to make your own analysis and verification. Agent hereby notifies prospective buyer/lessee that (a) Agent will be acting as a designated agent of seller/lessor with the duty to represent seller/lessor's interest; and (b) Information given to Agent will be disclosed to seller/lessor.



Offered by: **Bradley Tidemann, SIOR** | 316-650-8853 | btidemann@weigand.com

J.P. Weigand & Sons, Inc. Commercial | 150 N. Market Wichita, KS 67202 | WeigandCommercial.com