

Description: Riverside, CA Assessor Map 603, 24 page: 1 of 1
 Order: RECALADO Comment:

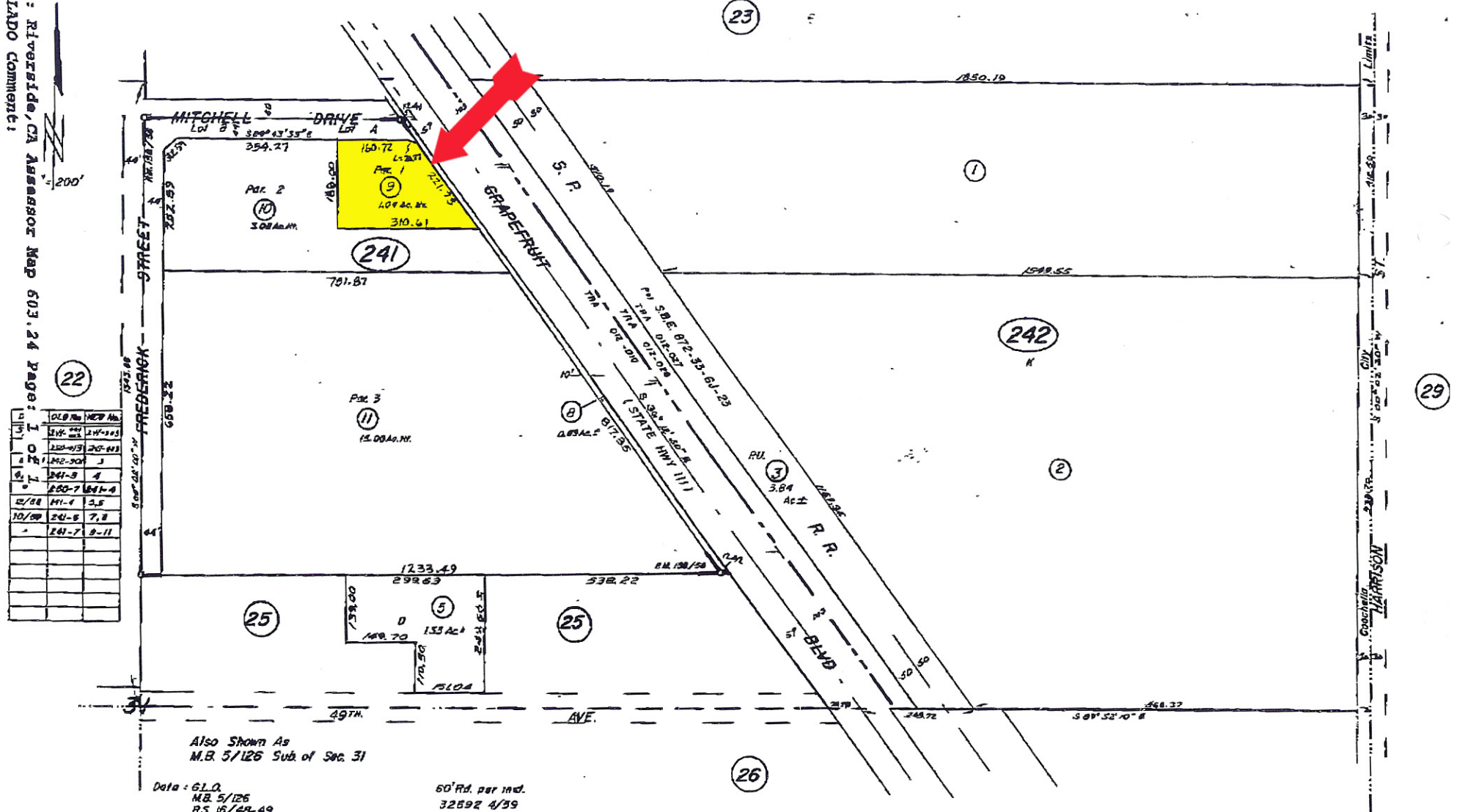
25-25-4

603-24

T.R.A 012-01D
 012-027
 012-028

1/2 NE 1/4 SEC. 31, T.5S., R.8E.

THIS MAP IS FOR
 ASSESSMENT PURPOSES ONLY



Also Shown As
 M.B. 5/126 Subd of Sec. 31
 Data - G.L.O.
 M.B. 5/126
 R.S. 15/48-49
 S.B.E. MAP
 HWY MAPS

60' Rd. per ind.
 32892 4/59

P.M. 158/56-59 Parcel Map No. 24 298

ASSESSOR'S MAP BK. 603 PG. 24
 RIVERSIDE COUNTY, CALIF.

MAR. 1967