

901 GILMAN STREET

ADVANCED MANUFACTURING PLUG & PLAY SUBLEASE
±18,248 RSF

KRISTI CHILDERS
510 812 2878
kristi.childers@jll.com
RE Lic #: 01997043

EDDIE SHUAI
510 285 5368
eddie.shuai@jll.com
RE Lic #: 01454419

OWEN FRISKE
415 632 9450
owen.friske@jll.com

VIRTUAL TOUR

901 GILMAN ST

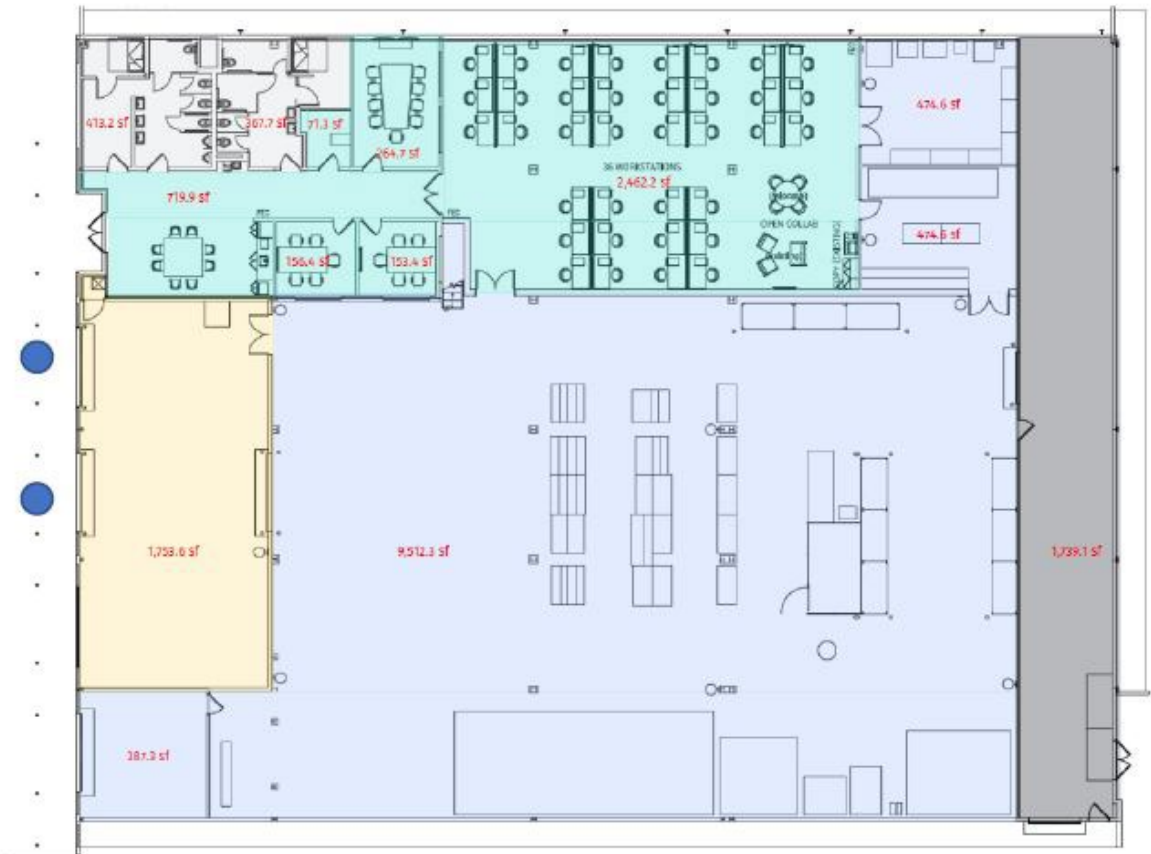
SIZE:	TERM:	RATE
-------	-------	------

±18,248 RSF

9/30/2027

Inquire with Brokers

- OFFICE:±3,828 SF
- PLUG & PLAY ADVANCED MANUFACTURING SPACE IN CENTRAL WEST BERKELEY LOCATION
- WALKING DISTANCE TO AMENITIES
- OPEN BREAK ROOM
- THREE CONFERENCE ROOMS
- 36 NEW SIT-STAND WORKSTATIONS
- 2 LABS
- HIGH BAY WAREHOUSE/MANUFACTURING SPACE
- TWO ROLL-UP DOORS
- DISTRIBUTED POWER



● ROLL-UP DOOR

Although information has been obtained from sources deemed reliable, JLL does not make any guarantees, warranties or representations, express or implied, as to the completeness or accuracy as to the information contained herein. Any projections, opinions, assumptions or estimates used are for example only. There may be differences between projected and actual results, and those differences may be material. JLL does not accept any liability for any loss or damage suffered by any party resulting from reliance on this information. If the recipient of this information has signed a confidentiality agreement with JLL regarding this matter, this information is subject to the terms of that agreement. ©2024. Jones Lang LaSalle Brokerage, Inc. All rights reserved.



GILMAN STREET AMENITIES

- | | | | | | |
|----|--------------------|----|----------------------------|-----|---|
| 1. | Whole Foods Market | 5. | FraiMani Handcrafter Foods | 9. | The North Face Outlet |
| 2. | Philz Coffee | 6. | Gilman Brewing Company | 10. | Walgreens |
| 3. | Fieldwork Brewing | 7. | Chipotle | 11. | REI |
| 4. | Funky Elephant | 8. | Telsa Service Enter | 12. | 4 th Street Retail (.9 miles away) |

