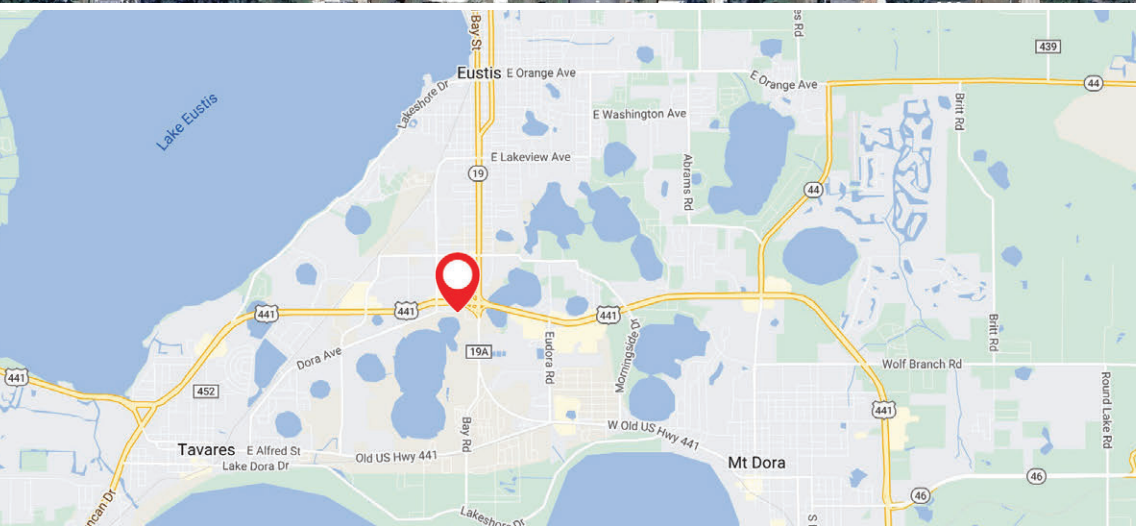
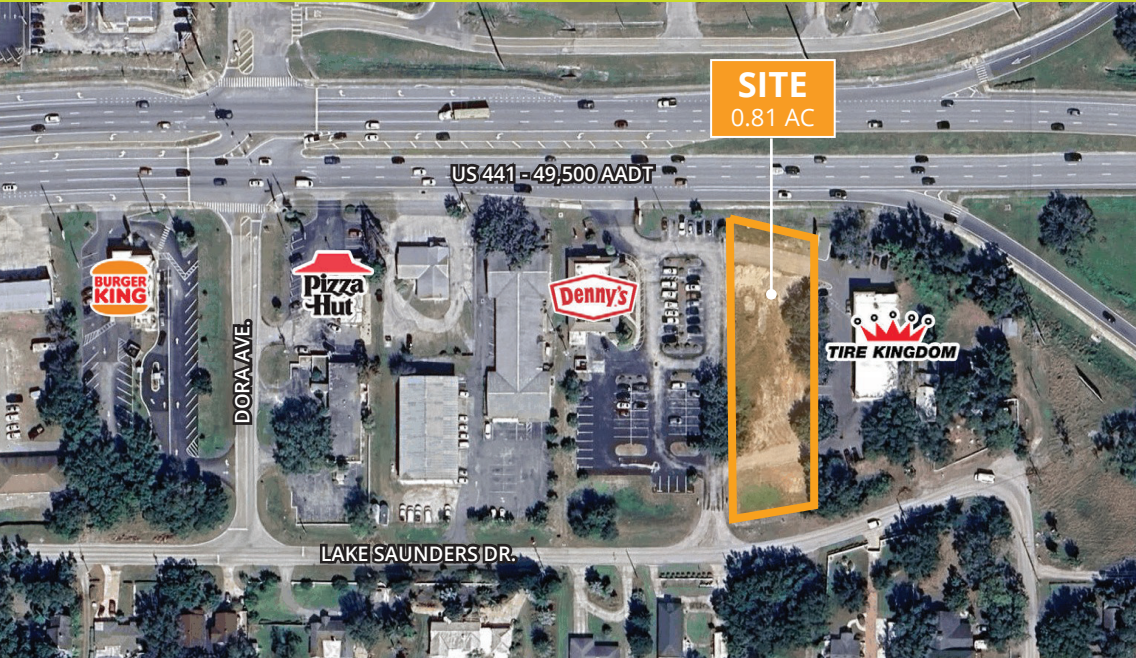


EUSTIS PARCEL | 0.81 ACRES

16160 US 441, Eustis, FL 32726

COMMERCIAL LAND FOR SALE



PROPERTY OVERVIEW

- » 0.81-acre commercial site for sale
- » Price: \$430,000
- » Situated on major thoroughfare US 441, just west of County Road 19
- » Site has 111 feet of frontage on US 441 with a traffic count of 49,500 vehicles per day
- » Located less than 1.5 miles from AdventHealth Waterman, which has 269 beds and more than 2,200 employees
- » Nearby major retailers include Publix, Bealls, Ross Dress for Less, TJ Maxx, Target, and Walmart Supercenter

DEMOGRAPHICS

	1 Mile	3 Miles	5 Miles
Population	6,500	40,283	79,546
Households	2,980	17,476	34,507
Daytime Pop.	8,021	38,137	64,567
Ave. HH Income	\$64,919	\$86,631	\$90,437

