

HVAC DESIGN REQUIRES	YES	NO
DUCT SMOKE DETECTOR		●
FIRE DAMPER(S)	●	
SMOKE DAMPER(S)		●
FIRE RATED ENCLOSURE		●
FIRE RATED ROOF/FLOOR CEILING ASSEMBLY		●
FIRE STOPPING	●	
SMOKE CONTROL		●

GENERAL H.V.A.C. NOTES

- ALL FAN UNITS, MOTORS, COMPRESSORS, ETC. SHALL BE ISOLATED, AS REQUIRED TO OPERATE QUIETLY SO THAT UNOBJECTIONABLE SOUND WILL BE HEARD IN THE HABITABLE SPACES DUE TO AIR VELOCITY, MOTOR HUM, VIBRATION OR MECHANICAL MOVEMENT.
- A/C SYSTEM SHALL BE CONTROLLED BY A THERMOSTAT. MOUNT THERMOSTAT 5'-0" ABOVE FINISHED FLOOR, U.O.N.
- UNDERCUT DOORS 1" A.F.F. FOR R/A FOR ROOMS WITH LESS THAN 110 CFM FOR ROOMS WITH OVER 110 CFM PROVIDE R.A.G. AND TRANSFER DUCT.
- ALL REFRIGERANT PIPING SHALL BE COPPER - TYPE L - ACR TYPE, DEHYDRATED AND SEALED. ALL FITTINGS SHALL BE WROUGHT COPPER. ALL JOINTS SHALL BE MADE WITH HIGH TEMPERATURE BRAZING ALLOY OF NOT LESS THAN 5% SILVER. PIPING INSTALLATION NOT LESS THAN 3/16" THICK "ARMAFLEX". LIQUID AND SUCTION LINES SHALL BE SIZED ACCORDING TO EQUIPMENT MANUFACTURER'S RECOMMENDATIONS FOR EQUIVALENT LENGTH OF PIPING RUN FOR CONNECTED TONNAGE. ALL PIPING ACCESSORIES SHALL BE CONSTRUCTED AS SUGGESTED BY EQUIPMENT MANUFACTURER. ALL PIPING SHALL BE EVACUATED PER GOOD PIPING PRACTICE BEFORE START-UP.

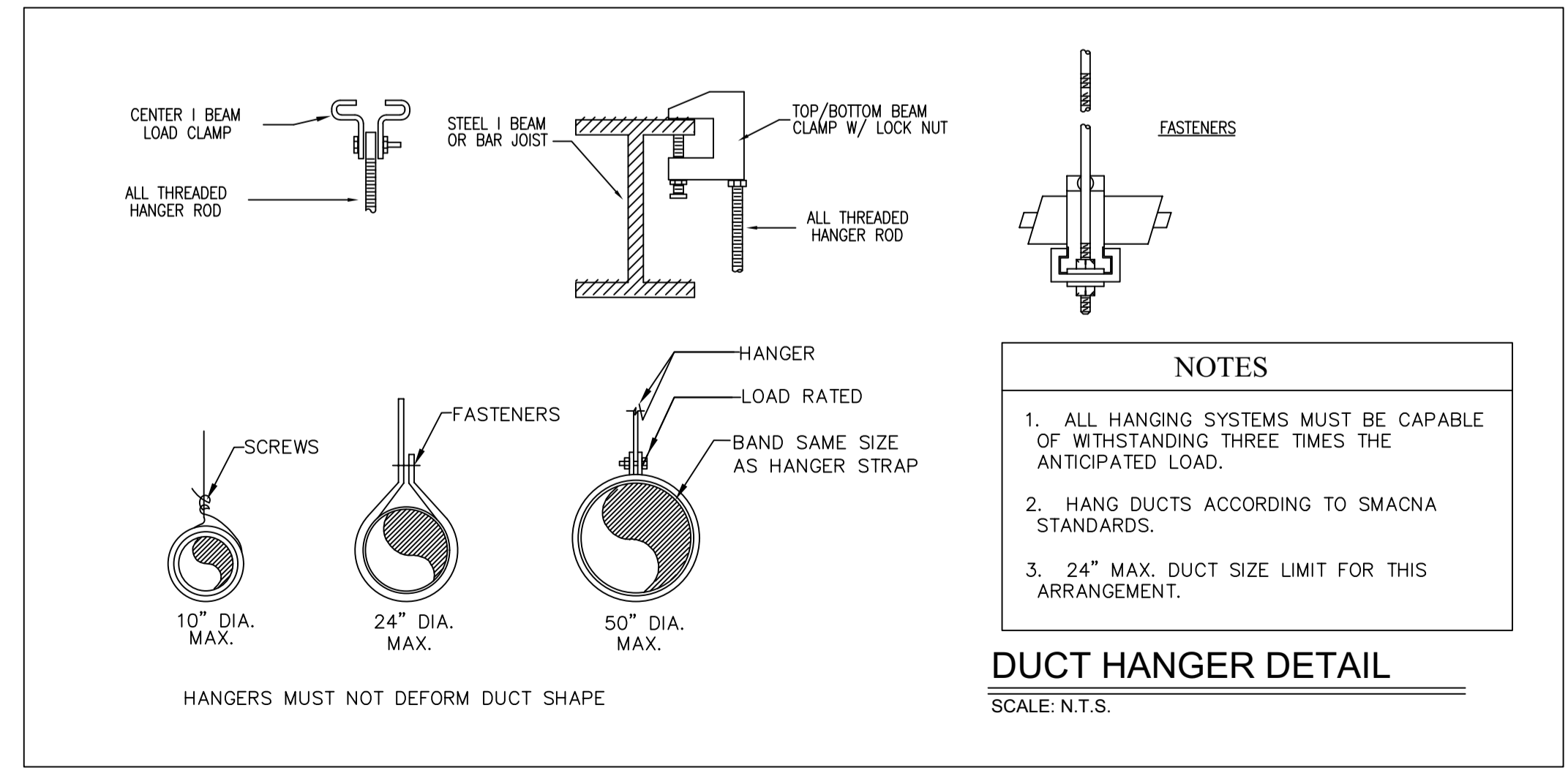
STRAP HANGERS

TRAPEZE HANGERS

TABLE 4-1
RECTANGULAR DUCT HANGERS
MINIMUM SIZE

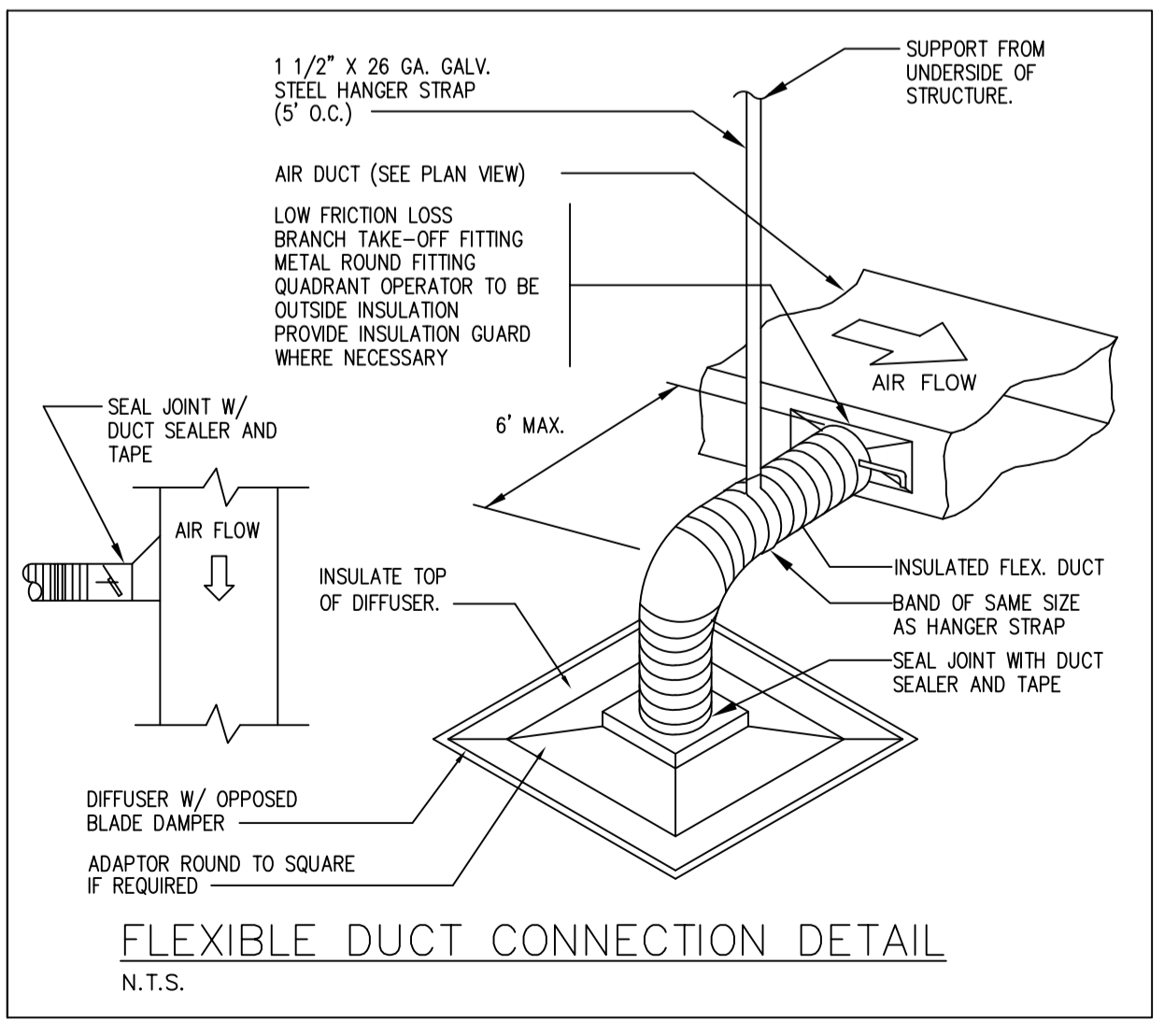
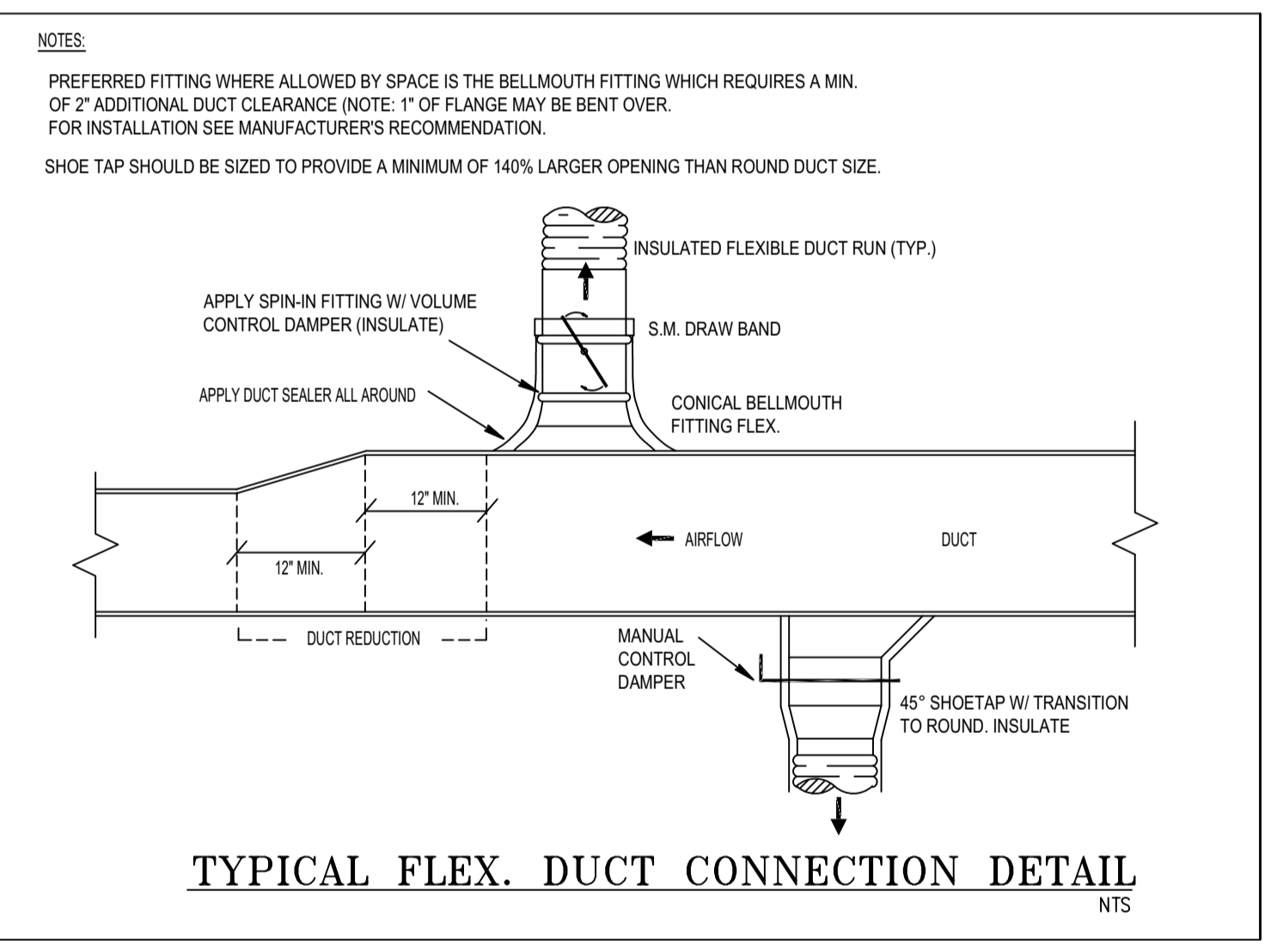
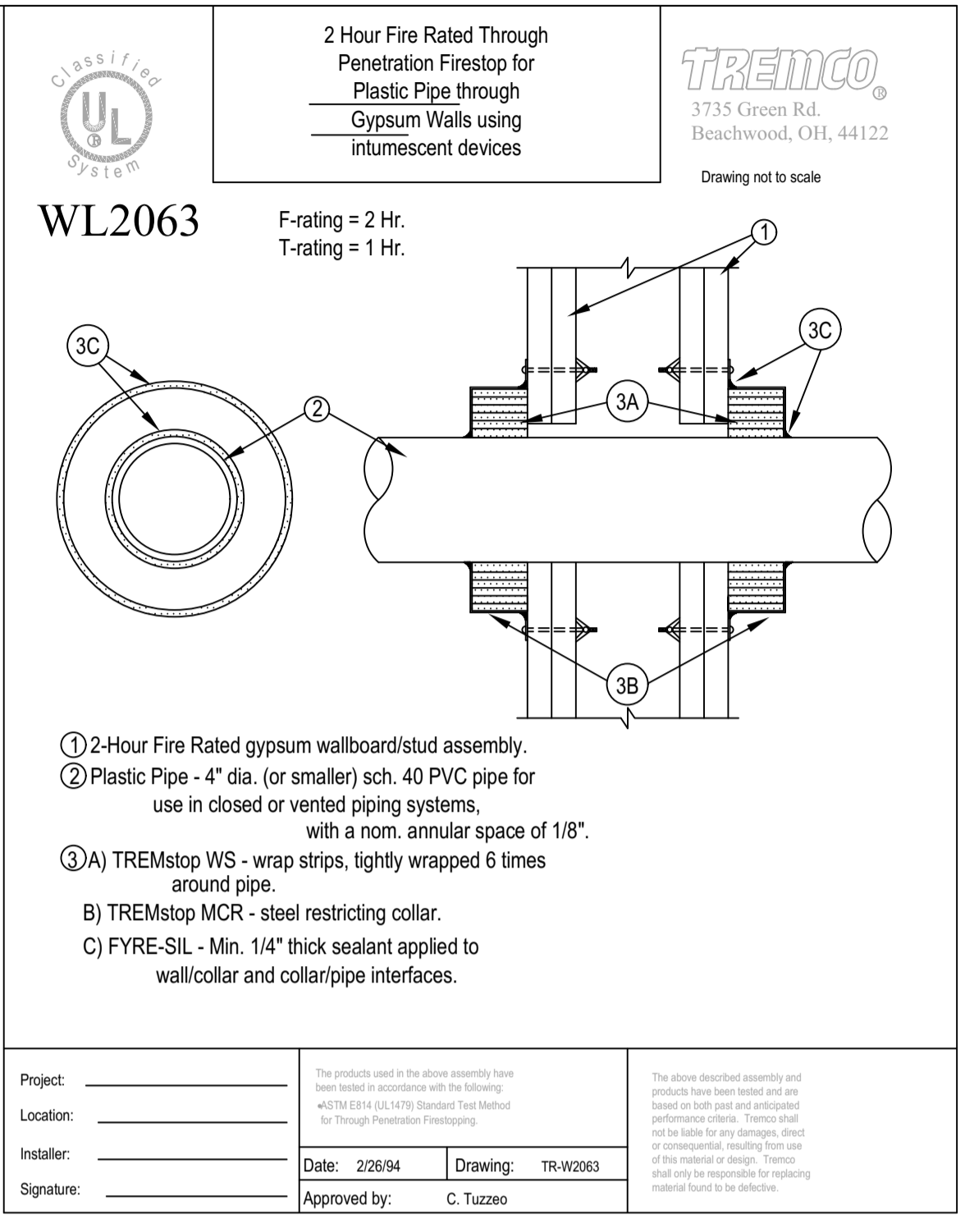
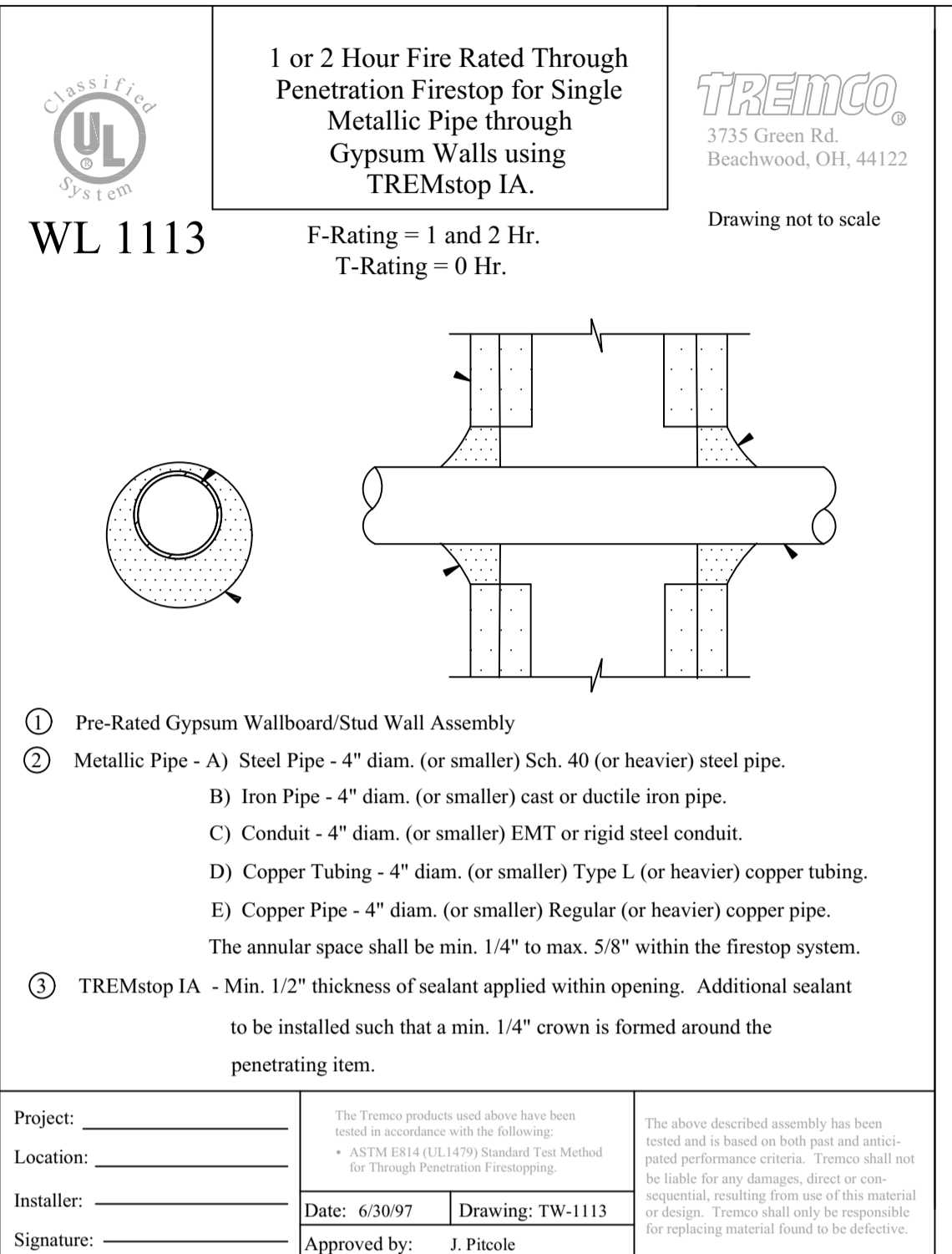
MAXIMUM HALF OF DUCT PERIMETER	PAIR AT 10 FT SPACING		PAIR AT 8 FT SPACING		PAIR AT 5 FT SPACING		PAIR AT 4 FT SPACING	
	STRAP	WIRE/ROD	STRAP	WIRE/ROD	STRAP	WIRE/ROD	STRAP	WIRE/ROD
P/2 = 30"	1"x22 GA.	10 GA. (.135")	1"x22 GA.	10 GA. (.135")	1"x22 GA.	12 GA. (.106")	1"x22 GA.	12 GA. (.106")
P/2 = 72"	1"x18 GA.	3/8"	1"x20 GA.	1/4"	1"x22 GA.	1/4"	1"x22 GA.	1/4"
P/2 = 96"	1"x16 GA.	3/8"	1"x18 GA.	3/8"	1"x20 GA.	3/8"	1"x22 GA.	1/4"
P/2 = 120"	1.5"x16 GA.	1/2"	1"x16 GA.	3/8"	1"x18 GA.	3/8"	1"x20 GA.	1/4"
P/2 = 168"	1.5"x16 GA.	1/2"	1.5"x16 GA.	1/2"	1"x16 GA.	1/2"	1"x18 GA.	3/8"
P/2 = 192"	-	1/2"	1.5"x16 GA.	1/2"	1"x16 GA.	1/2"	1"x16 GA.	3/8"
P/2 = 193" UP	SPECIAL ANALYSIS REQUIRED							

AS PER SMACNA TABLE 4-1 & FIG. 4-4



NOTES

- ALL HANGING SYSTEMS MUST BE CAPABLE OF WITHSTANDING THREE TIMES THE ANTICIPATED LOAD.
- HANG DUCTS ACCORDING TO SMACNA STANDARDS.
- 24" MAX. DUCT SIZE LIMIT FOR THIS ARRANGEMENT.



SEAL:
Jose Ramos
Digitally signed by Jose Ramos
Date: 2021.08.27 18:00:07 -04'00'

ALL IDEAS, DESIGNS, ARRANGEMENTS AND PLANS INDICATED OR REPRESENTED BY THIS DRAWING ARE OWNED BY AND THE PROPERTY OF RAMOS ARCHITECTS & ASSOC. AND WERE CREATED, EVOLVED AND DEVELOPED FOR USE ON AND IN CONNECTION WITH THE SPECIFIED PROJECT. NONE OF SUCH IDEAS, DESIGNS, ARRANGEMENTS OR PLANS SHALL BE USED BY OR DISCLOSED TO ANY PERSON, FIRM OR CORPORATION FOR ANY PURPOSE WHATSOEVER WITHOUT THE WRITTEN PERMISSION OF RAMOS ARCHITECTS & ASSOCIATES. WRITTEN DIMENSIONS OF THESE DRAWINGS SHALL HAVE PRECEDENCE OVER SCALED DIMENSIONS. CONTRACTORS SHALL VERIFY AND BE RESPONSIBLE FOR ALL DIMENSIONS AND CONDITIONS ON THE JOB AND THIS OFFICE MUST BE NOTIFIED OF ANY VARIATIONS FROM THE DIMENSIONS AND CONDITIONS SHOWN BY THESE DRAWINGS. SHOP DETAILS MUST BE SUBMITTED TO THIS OFFICE FOR APPROVAL BEFORE PROCEEDING WITH FABRICATION. ALL RIGHTS RESERVED. © 2021

PROJECT:
QUANTUM ON THE BAY
UNIT 212
TENANT SPACE INTERIOR RENOV.
1900 NORTH BAYSHORE DRIVE, UNIT 212
MIAMI, FL 33132

DATE	07/23/21

DRAWING TITLE:
NOTES DETAILS

DRAWN BY: ZM CHECKED BY: JR
SCALE: AS NOTED

PROJECT NUMBER
21189

SHEET
M-501