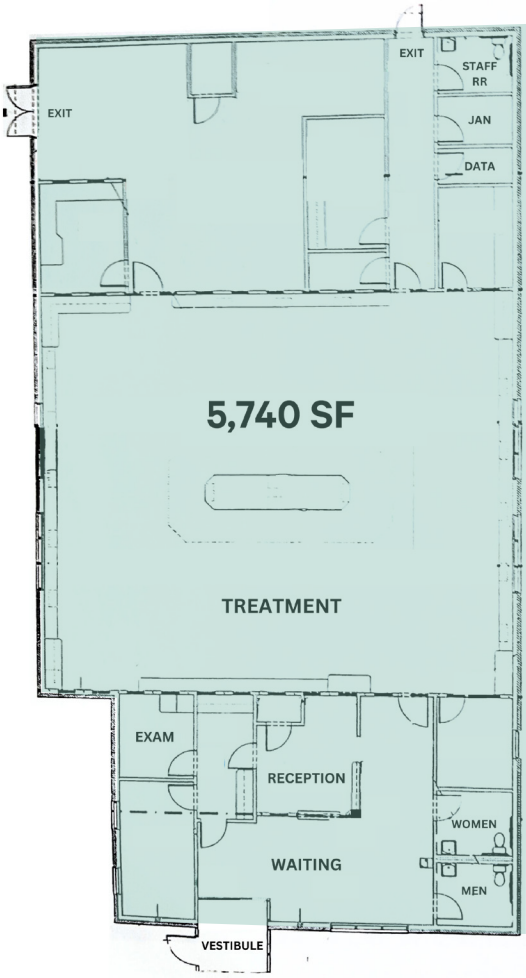


1002 Williams Street

1002 Williams Street
Hogansville, GA 30230

5,740 SF Freestanding Former Medical Building





Property Highlights

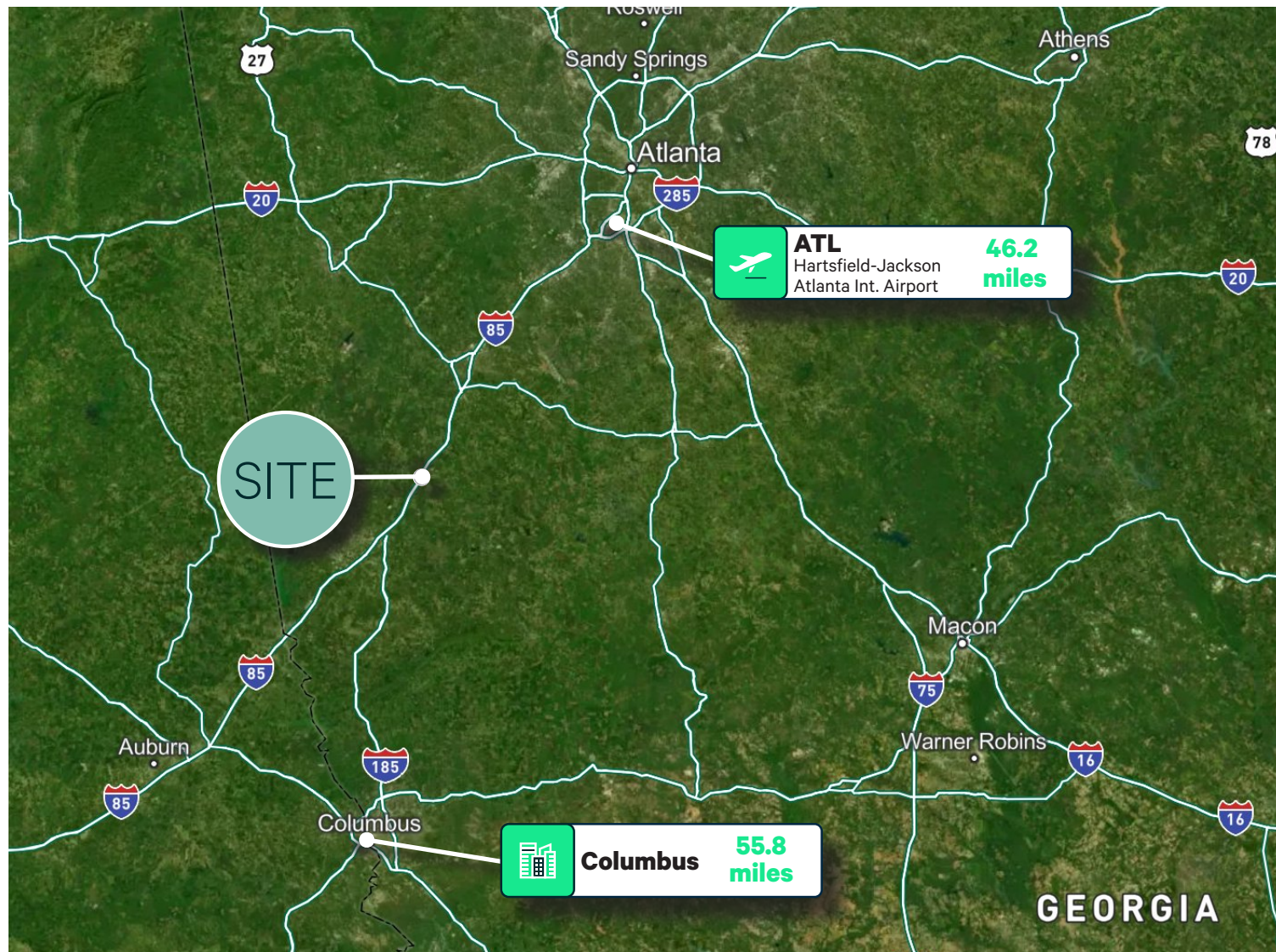
- 5,740 SF freestanding former medical building on 1 AC
- Conveniently situated off I-85 (Exit 28) with national and regional retailers including:
Ingles, Love’s Travel Station, Wendy’s, McDonald’s, Marathon Gas
- Hogansville is located between Atlanta and Columbus, Georgia’s two largest cities
- Only 20 minutes away from the new 583-bed Piedmont Hospital in Newnan
- 45 mins from the Hartsville-Jackson International Airport

| Demographics 2023 | 1 Mile | 3 Miles | 5 Miles |
|--------------------------|----------|----------|----------|
| Businesses | 22 | 101 | 121 |
| Employees | 306 | 867 | 1,058 |
| Population | 44 | 3,782 | 7,033 |
| Average Household Income | \$68,813 | \$71,529 | \$71,349 |
| Daytime Population | 485 | 3,194 | 5,411 |
| Median Age | 34 | 38 | 38 |

Freestanding Former Medical Building

1002 Williams Street | Hogansville, GA 30230

For Lease



Contact Us

Olivia Arnold

Associate

+1 404 923 1209

olivia.arnold@cbre.com

CBRE, Inc.

Atlanta

+1 404 504 7900

www.cbre.com

© 2024 CBRE, Inc. All rights reserved. This information has been obtained from sources believed reliable, but has not been verified for accuracy or completeness. You should conduct a careful, independent investigation of the property and verify all information. Any reliance on this information is solely at your own risk. CBRE and the CBRE logo are service marks of CBRE, Inc. All other marks displayed on this document are the property of their respective owners, and the use of such logos does not imply any affiliation with or endorsement of CBRE. Photos herein are the property of their respective owners. Use of these images without the express written consent of the owner is prohibited.