

UNIVERSITY RESEARCH PARK, DAVIS CA

Office/R&D/Medical Space



±13,492 RSF

- Full building available in addition to larger campus opportunities. Full Office buildout, including reception area, mix of private offices, open area, large conference room, and break room
- R&D/Lab/Medical Conversion Potential.
- Great window lines.
- 1/2 mile to UC Davis core campus

Pricing: \$2.65/SF, NNN

Q1/Q2 2024 AVAILABILITY

SPECIFICATIONS

- Power: 1,200 amps, 120/208V, 3 phase, 4 wire
- Fire sprinklers throughout building
- 49 tons of existing roof top units of HVAC
- 2" cold water main line
- 4" sewer main line
- 2" gas main line
- Test fits available for full building user. Landlord/Tenant to share 50/50 in costs of developing a test fit



FULCRUM
PROPERTY

NAHZ ANVARY, CCIM | 916 284 8385 | nahz.anvary@kidder.com
JIM GRAY, CCIM, LEED AP | 916 947 5142 | jim.gray@kidder.com

DAVIS CALIFORNIA

1540 DREW AVENUE



FRONT ENTRANCE



ALTERNATE VIEW



VIEW FROM THE BACK OF THE BUILDING



EXTENSIVE WINDOW LINES



FULCRUM

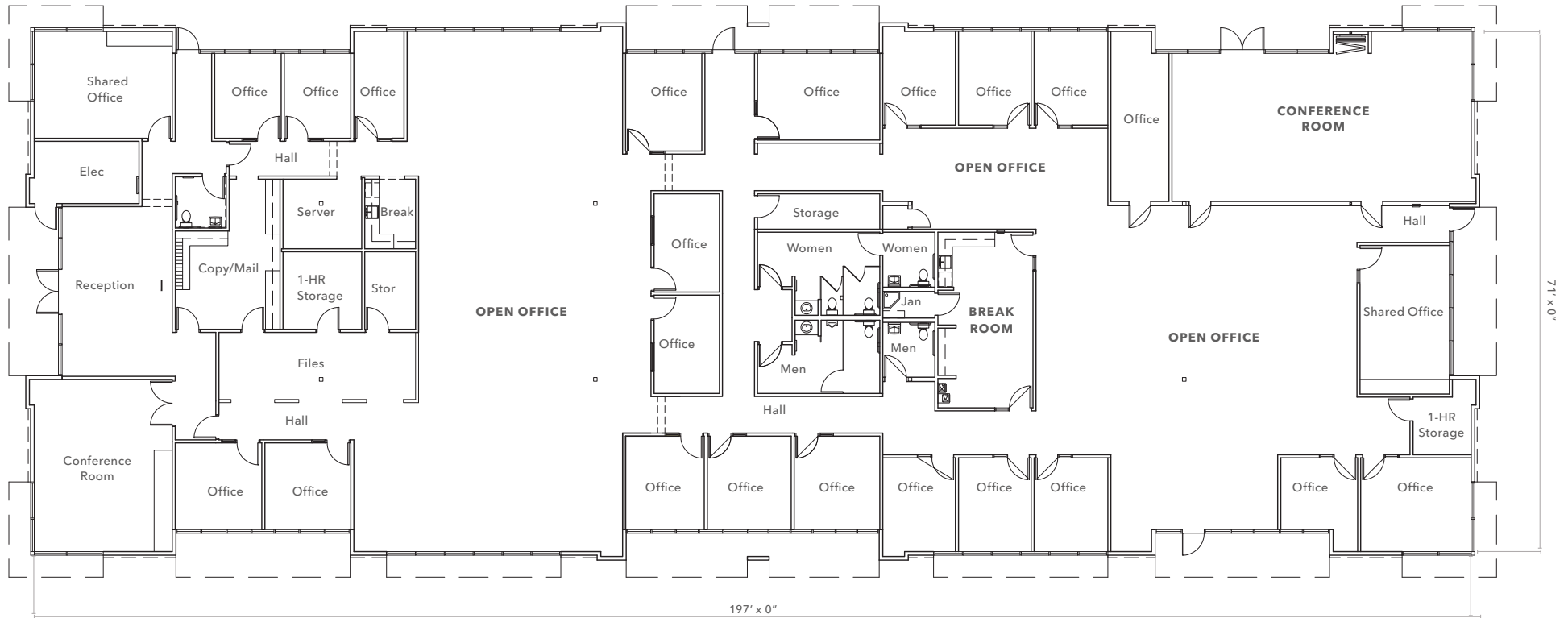
FULCRUM
PROPERTY

DAVIS CALIFORNIA

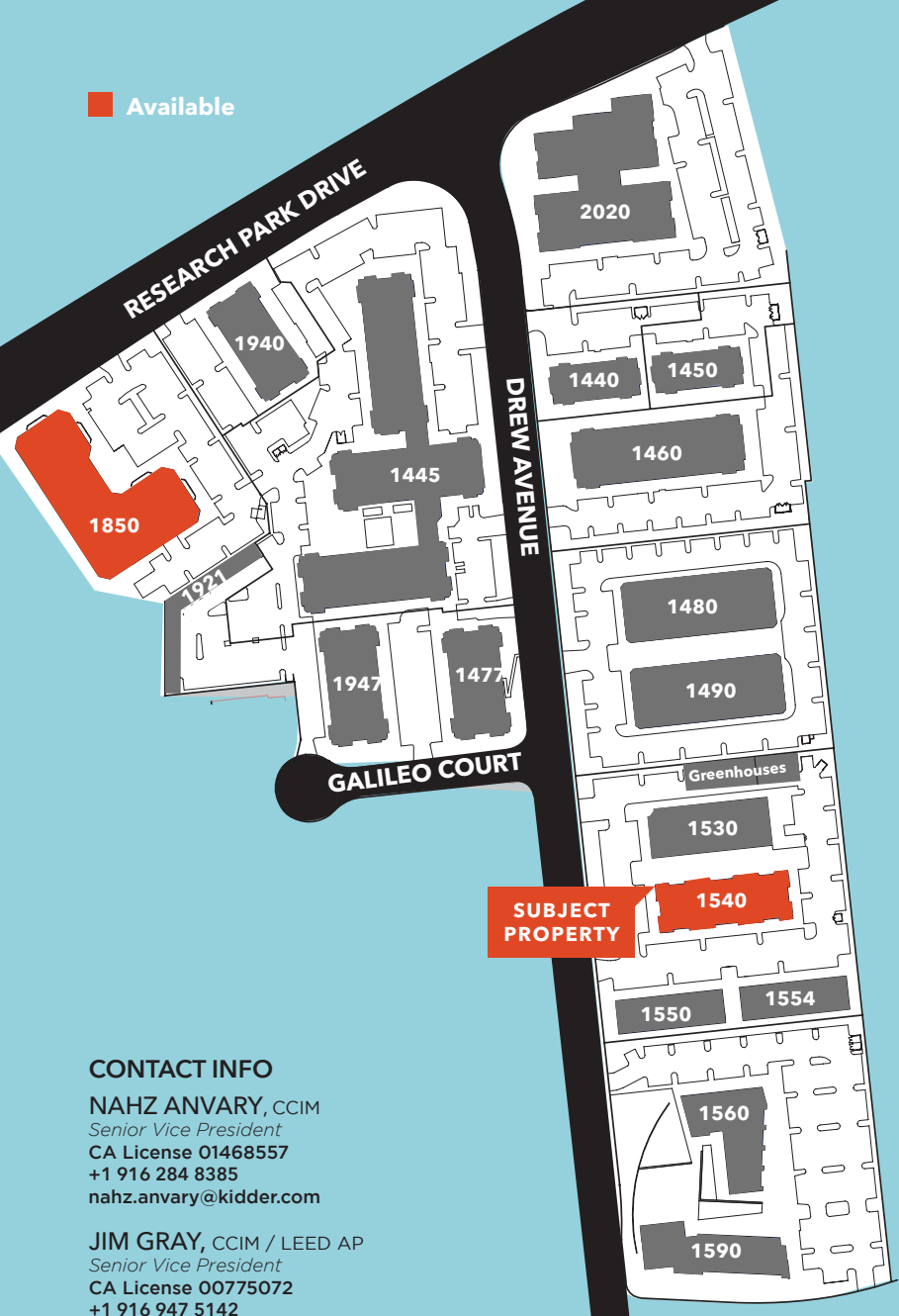
1540 DREW AVENUE



Existing Floor Plan



Available



SUBJECT PROPERTY



GREAT OUTDOOR SPACES

CONTACT INFO

NAHZ ANVARY, CCIM
 Senior Vice President
 CA License 01468557
 +1 916 284 8385
 nahz.anvary@kidder.com

JIM GRAY, CCIM / LEED AP
 Senior Vice President
 CA License 00775072
 +1 916 947 5142
 jim.gray@kidder.com



701 Univeristy Ave, SUITE 220
 SACRAMENTO, CA 95825
 kiddermathews.com



**FULCRUM
 PROPERTY**

DAVIS CALIFORNIA

1540 DREW AVENUE