

Eastern Ave Medical Office

13310 North Eastern Avenue, Edmond, OK 73013



PROPERTY SUMMARY

Available SF: 2,609 SF

Lease Rate: \$20.00 SF/yr (MG)

Building Size: 2,609 SF

Building Class: B

Year Built: 2014

Market: Oklahoma City

Sub Market: Edmond

Cross Streets: Memorial & Eastern

PROPERTY OVERVIEW

Great medical office building with 4 exam rooms, large nursing station, reception/admin area, waiting room, 1 private office, 2 restrooms and a break room/kitchen area.

LOCATION OVERVIEW

Conveniently located on Eastern Ave just north of the Kilpatrick Turnpike and south of Memorial Rd.

FOR MORE INFORMATION, PLEASE CONTACT:

Chris Anderson, CCIM Principal | P: 405.285.2100 X103 | canderson@grantgroupok.com

grantgroupok.com

Eastern Ave Medical Office

13310 North Eastern Avenue, Edmond, OK 73013



FOR MORE INFORMATION, PLEASE CONTACT:

Chris Anderson, CCIM Principal | P: 405.285.2100 X103 | canderson@grantgroupok.com

grantgroupok.com

Eastern Ave Medical Office

13310 North Eastern Avenue, Edmond, OK 73013



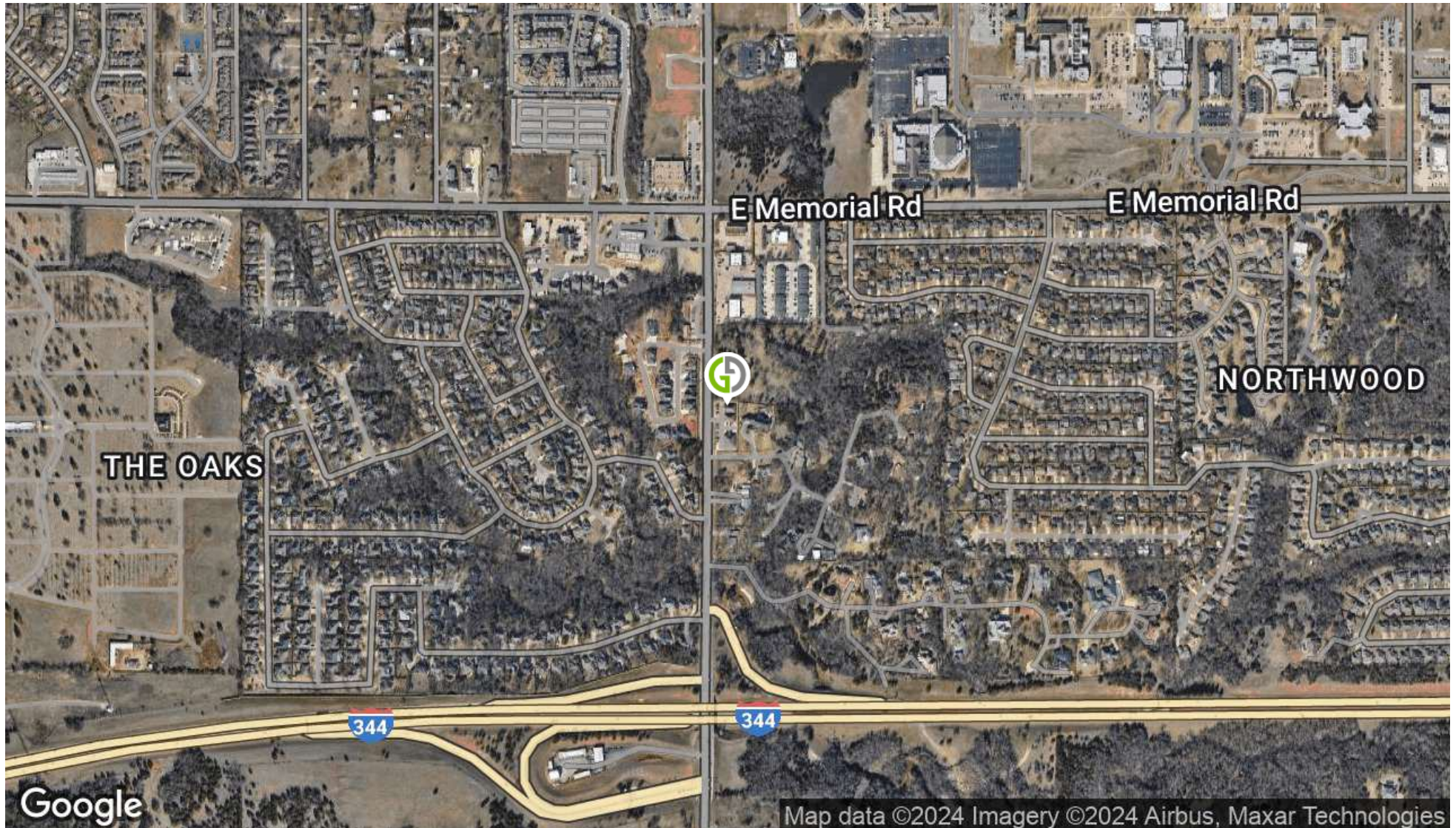
FOR MORE INFORMATION, PLEASE CONTACT:

Chris Anderson, CCIM Principal | P: 405.285.2100 X103 | canderson@grantgroupok.com

grantgroupok.com

Eastern Ave Medical Office

13310 North Eastern Avenue, Edmond, OK 73013



FOR MORE INFORMATION, PLEASE CONTACT:

Chris Anderson, CCIM Principal | P: 405.285.2100 X103 | canderson@grantgroupok.com

grantgroupok.com

Eastern Ave Medical Office

13310 North Eastern Avenue, Edmond, OK 73013



POPULATION

Total Population
Average Age
Average Age (Male)
Average Age (Female)

0.3 MILES

494
43
42
44

0.5 MILES

2,609
39
38
40

1 MILE

6,908
37
35
38

HOUSEHOLDS & INCOME

Total Households
of Persons per HH
Average HH Income
Average House Value

0.3 MILES

204
2.4
\$133,168
\$339,489

0.5 MILES

1,164
2.2
\$109,815
\$246,710

1 MILE

2,737
2.5
\$101,391
\$282,490

Demographics data derived from AlphaMap

FOR MORE INFORMATION, PLEASE CONTACT:

Chris Anderson, CCIM Principal | P: 405.285.2100 X103 | canderson@grantgroupok.com

grantgroupok.com

Eastern Ave Medical Office

13310 North Eastern Avenue, Edmond, OK 73013



CHRIS ANDERSON, CCIM

Principal

canderson@grantgroupok.com

Direct: **405.285.2100 x103** | Cell: **405.408.9098**

PROFESSIONAL BACKGROUND

Chris Anderson is a principal and one of two managing partners of Grant Group. Chris specializes in the acquisition and disposition of income producing properties with an emphasis on car washes, self storage, multifamily and net leased buildings.

Prior to forming Grant Group, Chris was both a top performing investment advisor for another prominent commercial real estate firm in Oklahoma as well as an associate for a well known real estate investment trust (REIT) that owns and operates over 26,000 apartment units and roughly 2,000,000 SF of retail space stretching from New Jersey to Florida and throughout the central U.S. in states such as Oklahoma, Kansas and Missouri. Chris was responsible for overseeing all aspects of leasing and marketing for the firm's Oklahoma portfolio. He was also an integral part of a small group of individuals that evaluated potential acquisitions for the company.

Chris attended the University of Central Oklahoma where he studied business administration. He holds the very prestigious Certified Commercial Investment Member (CCIM) designation which approximately only 6% of the 150,000 commercial practitioners nationwide hold.

Chris currently serves on the Board of Directors for the Edmond Chamber of Commerce as well as the Edmond Park and Recreation Board.

He is also a member of the National Association of Realtors (NAR), Realtors Commercial Alliance (RCA) and the Commercial Real Estate Council (CREC).

Grant Group
123 S. Broadway, Suite 100
Edmond, OK 73034
405.285.2100

FOR MORE INFORMATION, PLEASE CONTACT:

Chris Anderson, CCIM Principal | P: 405.285.2100 X103 | canderson@grantgroupok.com

grantgroupok.com