

9880-9882 Waterman Road
Elk Grove, CA 95624



FOR LEASE +/- 2,196 SF of
Industrial / Flex Space

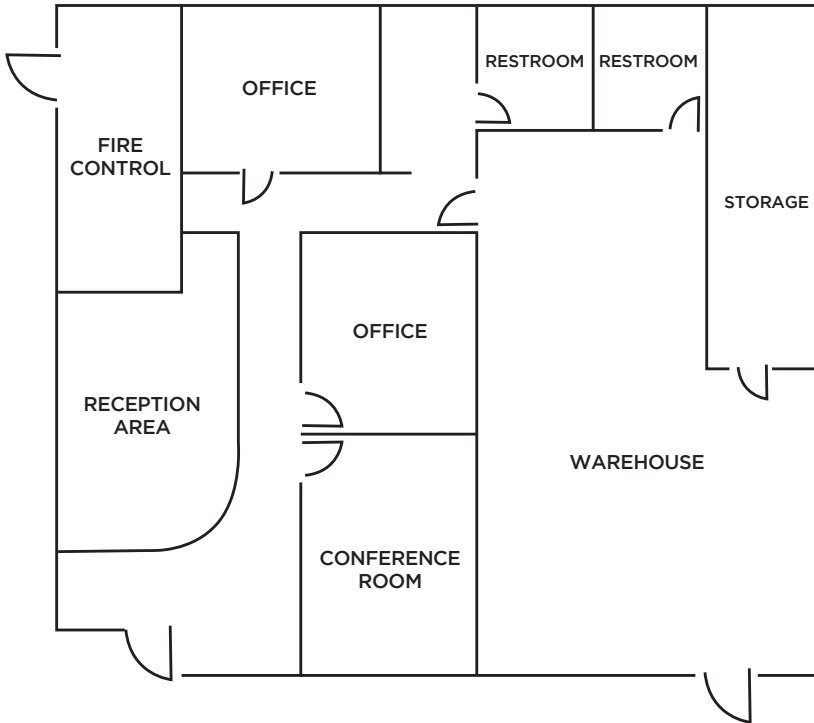
\$1.10NNN

Property Highlights

- Great Exposure Fronting Waterman Blvd in Heart of sought after Industrial Submarket of Elk Grove
- Conveniently Located Near Hwy 99
- Monument Signage Available
- Zoning: LI (City of Elk Grove)

Suite Highlights

9880 WATERMAN ROAD, SUITE 100



- +/- 2,196 Square Foot Industrial / Flex Space
- \$1.10NNN
- End-Cap Suite
- One (1) GL Door
- +/- 1,100SF of Office
 - » Reception Area
 - » Conference Room
 - » Private Office
 - » Break Room
 - » Upgraded Finishes
- +/- 1,096 SF Warehouse Space
- Private Restroom
- Zoning: LI
- Available September 1, 2024





PDF

exp[®]

COMMERCIAL

GLOBAL EXPERIENCE — LOCAL PERSPECTIVE™

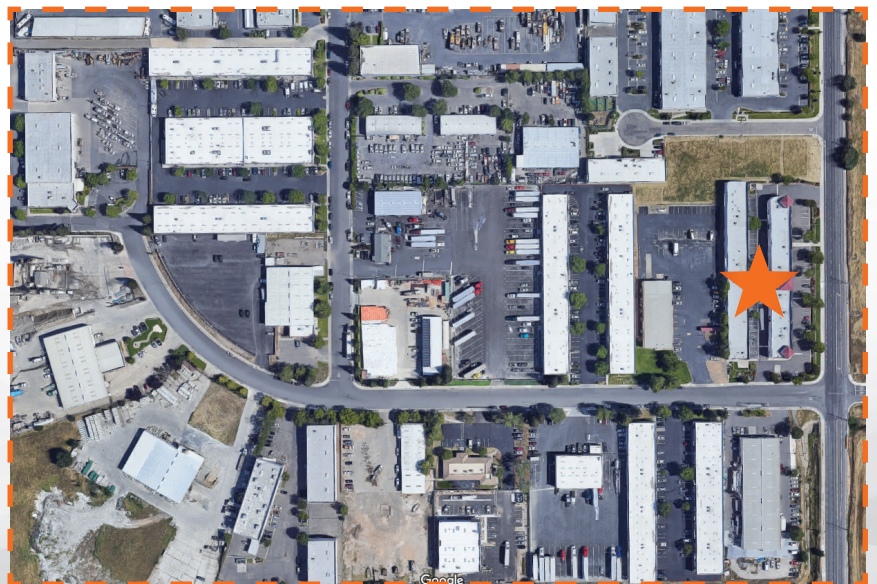
9880-9882 Waterman Road
Elk Grove, CA 95624

Surrounding Area Map



Nearby Businesses

- L&S Motorworks
- Loyal Automotive
- Feist Cabinets & Wood works
- The Smog Spot
- Elk Grove Bank Services
- Galaxy Dance Arts
- Pereira Auto Body Repairs
- Superfloors Ltd.
- Hanford Sand and Gravel
- Nutrishare
- Exit Strategy Games
- West Coast Car Audio & Tint
- S&N Motorsport
- Accurate Fumigation
- Absolute Auto Care





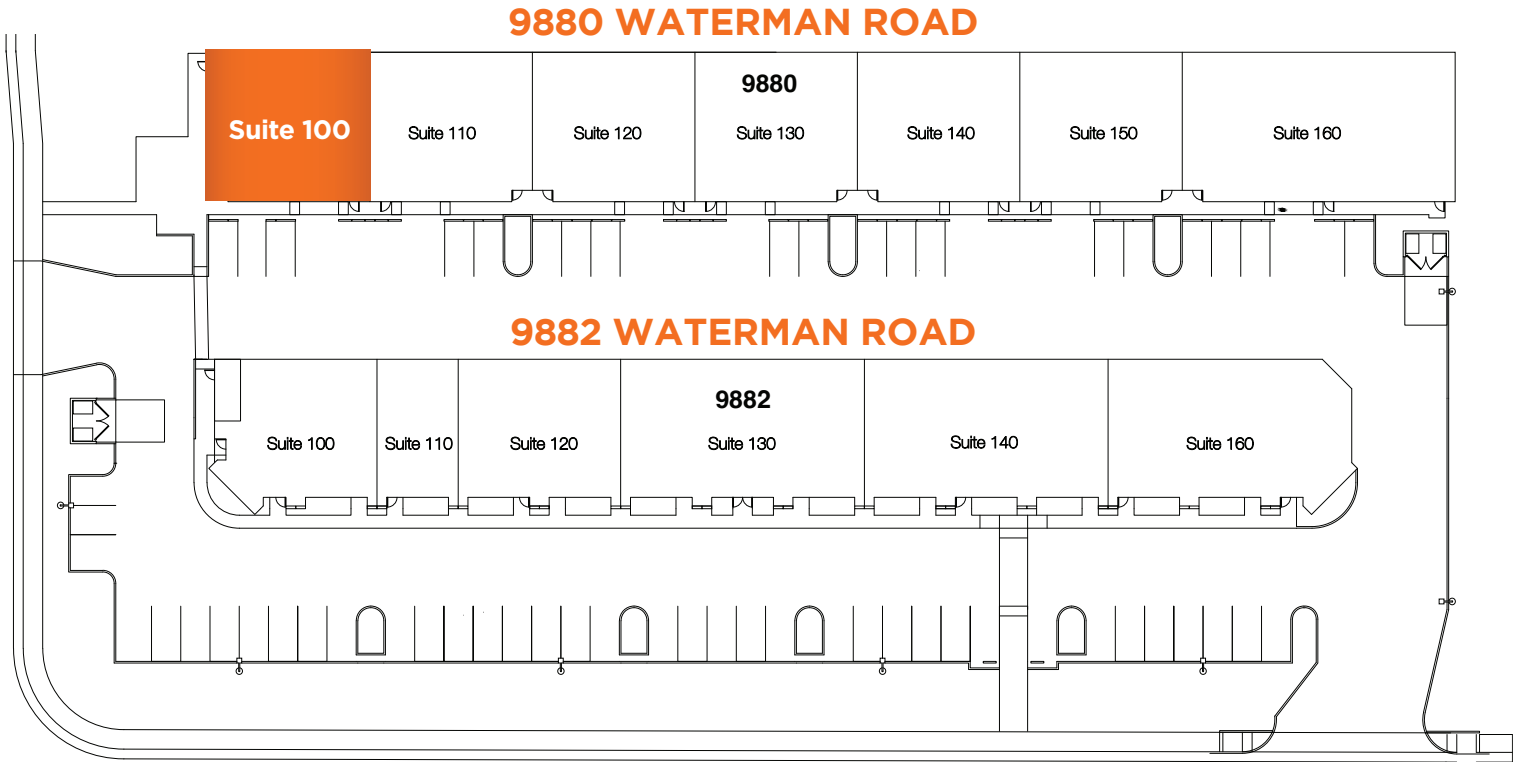
PDF

exp
COMMERCIAL

GLOBAL EXPERIENCE — LOCAL PERSPECTIVE™

**9880-9882 Waterman Road
Elk Grove, CA 95624**

Site Plan



For More Information

Jon Bias

916-508-9556 mobile

Jon@pdf-usa.com

CaIDRE #01998325