

AVAILABLE

241 Farrell Road
Syracuse, New York 13209



For Lease



10,211± SF of Warehouse with Yard Space

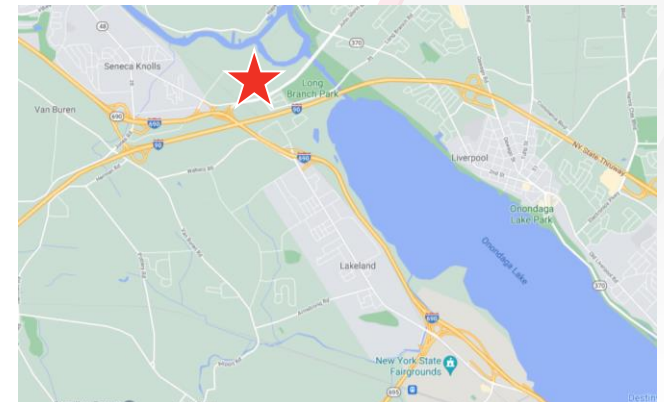
Property Highlights

- 10,211± Total square feet
 - 2,500± SF Office
 - 7,700± SF Warehouse
- Ceiling height 18'
- Pylon and building signage available
- Secure facility – Fully fenced with gated access
- Exceptional interstate access
- Four (4) 9'w x 12'h grade level doors
- Low-cost sub-transmission electrical service
- Upgraded LED lighting throughout

Contact

STEPHEN SCUDERI
Real Estate Salesperson
+1 315 445 8517
sscuderi@pyramidbrokerage.com

JOHN L. CLARK, SIOR, CRE
President, Real Estate Broker
+1 315 445 8509
jclark@pyramidbrokerage.com



5845 Widewaters Pkwy, Suite 200
East Syracuse, New York 13057
+1 315 445 1030
pyramidbrokerage.com

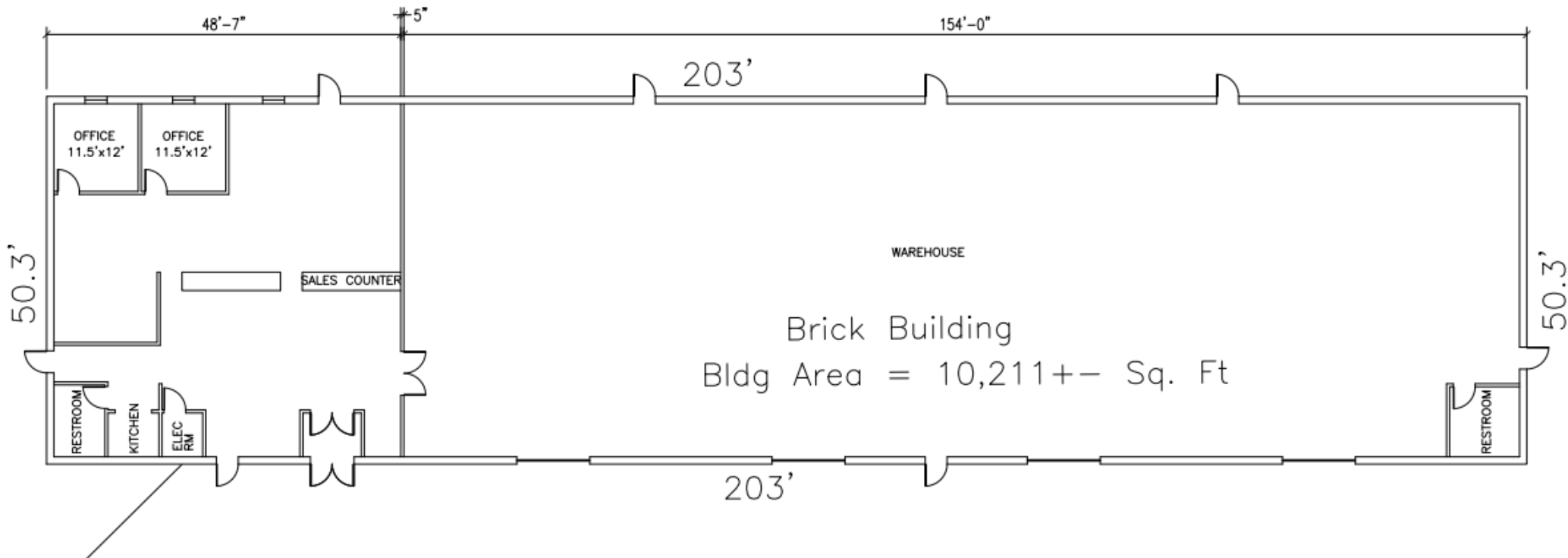
AVAILABLE

241 Farrell Road | Syracuse, New York



AVAILABLE

241 Farrell Road | Syracuse, New York



AVAILABLE

241 Farrell Road | Syracuse, New York



AVAILABLE

241 Farrell Road | Syracuse, New York



AVAILABLE

241 Farrell Road | Syracuse, New York



Independently Owned and Operated / A Member of the Cushman & Wakefield Alliance

Cushman & Wakefield Copyright 2022. No warranty or representation, express or implied, is made to the accuracy or completeness of the information contained herein, and same is submitted subject to errors, omissions, change of price, rental or other conditions, withdrawal without notice, and to any special listing conditions imposed by the property owner(s). As applicable, we make no representation as to the condition of the property (or properties) in question.