

FOR SALE OR LEASE | 11,650 SF | AVAILABLE NOW

# 303

NE NORTHLAKE WAY, SEATTLE, WA 98105



**NEWMARK**

**CHARLIE  
FARRA**

Executive Vice President  
206.999.2928  
charlie.farra@nrmk.com

**LEVI  
BUNDRANT**

Associate  
425.409.7405  
levi.bundrant@nrmk.com



# SALE HIGHLIGHTS

- Asking price: \$6,000,000
- Building square footage: 11,650
- Building \$/SF: \$515.00
- Land square footage: 33,855
- Land \$/SF: \$177.00
- Zoning: UI U/45
- ±475 lineal feet of commercial moorage

# PROPERTY DETAILS

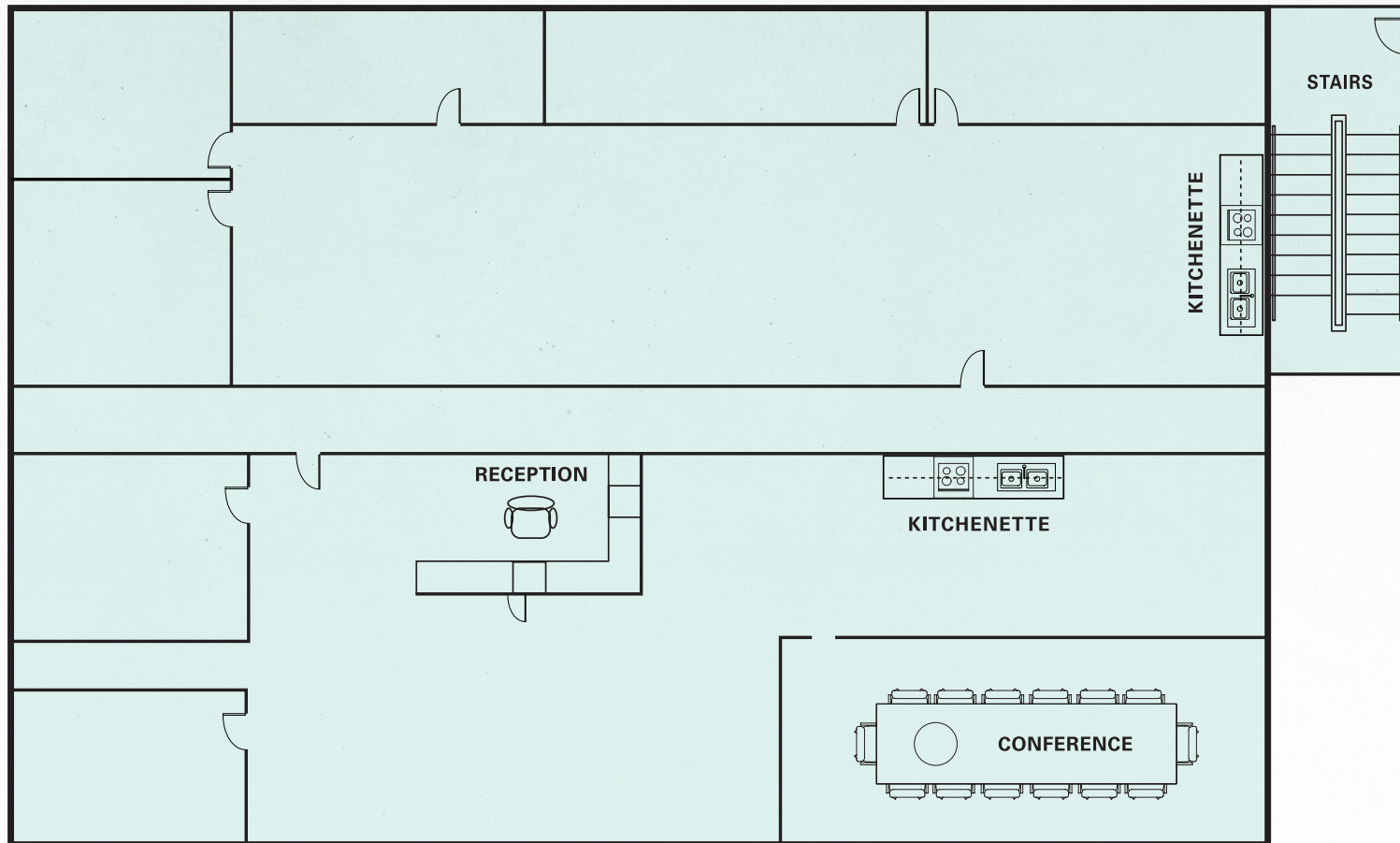
- 3,050 SF office & 8,600 SF warehouse available
- 16'-20' clear height
- Northlake waterfront industrial
- Secure fenced yard
- Prime location, signage & visibility
- Oversized grade level door
- ±475 lineal feet of commercial moorage
- Year Built: 1952
- 10 parking stalls





# OFFICE FLOOR PLAN

3,050 SF Office | Available Now





# WAREHOUSE FLOOR PLAN

8,600 SF Warehouse | Available Now





# NORTHLAKE LOCATION

Situated amidst the vibrant Northlake Commons and adjacent to Dunn Lumber, 303 NE Northlake Way presents an ideal opportunity for local businesses seeking expansion or relocation. Boasting a waterfront industrial setting, fenced yard, moorage access, and a spacious warehouse facility, this location offers an array of enticing amenities.

With convenient access to I-5, as well as being mere minutes from Fremont, the Eastlake Life Sciences Hub, and major corporate offices, this location is strategically positioned at the heart of Seattle's evolving landscape.





# 303

NE NORTHLAKE WAY, SEATTLE, WA 98105

**CHARLIE FARRA**  
Executive Vice President  
206.999.2928  
charlie.farra@nrmk.com

**LEVI BUNDRANT**  
Associate  
425.409.7405  
levi.bundrant@nrmk.com

**NEWMARK**

The information contained herein has been obtained from sources deemed reliable but has not been verified and no guarantee, warranty or representation, either express or implied, is made with respect to such information. Terms of sale or lease and availability are subject to change or withdrawal without notice. MP-476